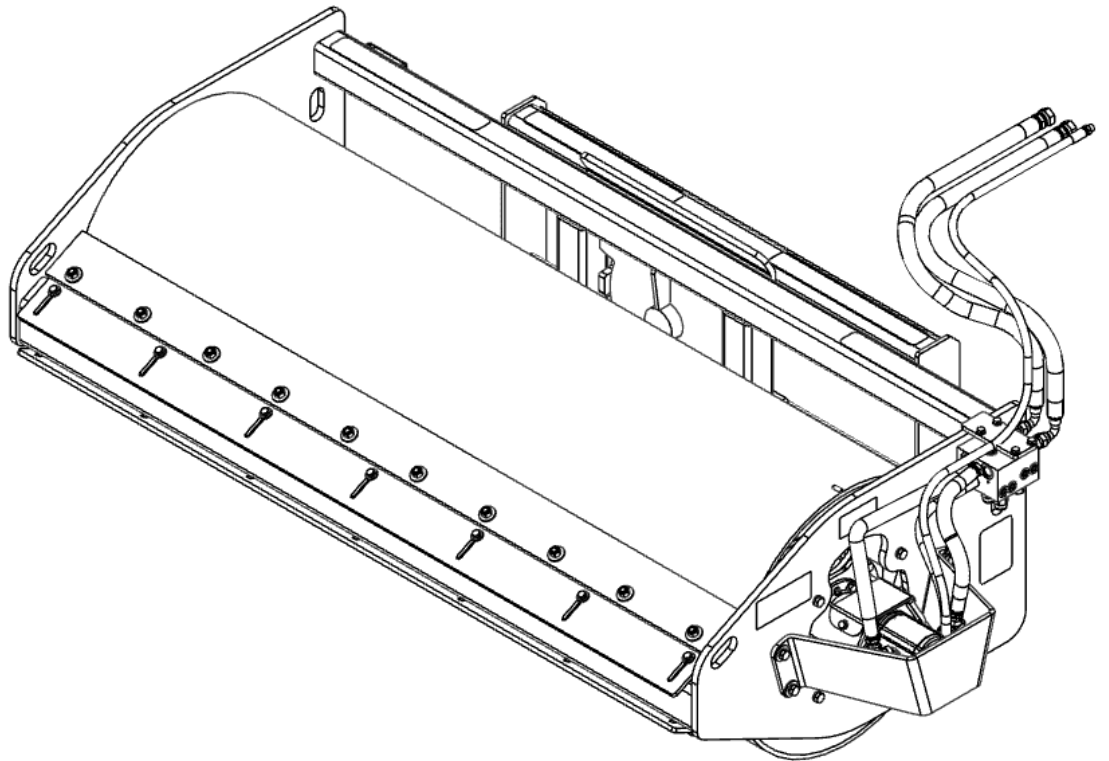




QUICK ATTACH



QUICK PACK™

VIBRATORY PACKER 72" / 80"

Operator's Manual

Maintenance & Parts Information



Read this Manual Before Use

TABLE OF CONTENTS

| | |
|------------------------|-------|
| SAFETY | 3-4 |
| DECAL INFORMATION | 5-6 |
| MOUNTING INSTRUCTIONS | 7-8 |
| OPERATING INSTRUCTIONS | 9 |
| ROUTINE MAINTENANCE | 10-12 |
| TORQUE INFORMATION | 13 |
| PARTS INFORMATION | 14-19 |
| GENERAL SPECS | 20 |
| NOTES | 21-22 |
| WARRANTY | 23 |

NOTE: Write your serial number for your attachment in the spaces below. Always refer to this serial number when calling for services parts.

Serial Number

Attachment Dealer

Address

Phone Number

Contact

NOTE: Quick Attach LLC reserves the right to make improvements in design or changes in specifications at any time without notice and without incurring any obligations to install them on units previously sold.

SAFETY

DO NOT use or perform maintenance on this machine until this manual has been read and understood. In addition, read the Operation and Maintenance Manual(s) pertaining to the attachment and the attachment carrier (“Loader”).

The user is responsible for inspecting the machine daily, and for having parts repaired or replaced when continued use of the machine would cause damage, excessive wear to other parts or make the machine unsafe for continued operation.

If an operating procedure, tool device, maintenance or work method not specifically recommended is used; you must satisfy yourself that it is safe for you and others. You must also ensure that the attachment will not be damaged or made unsafe by the procedures you choose.

Quick Attach LLC cannot anticipate every possible circumstance that might involve potential hazard. The safety messages found in this manual and on the machine are therefore not all inclusive

The signal words **CAUTION**, **WARNING**, or **DANGER** are used to indicate hazards.

⚠ CAUTION

Indicates a potentially hazardous situation which, if not avoided, may result in minor or moderate injury.

⚠ WARNING

Indicates a potentially hazardous situation which, if not avoided, could result in death or serious injury.

⚠ DANGER

Indicates a potentially hazardous situation which, if not avoided, will result in death or serious injury.

The word **IMPORTANT** is used in the text when immediate damage will occur due to improper technique or operation.

The word **NOTE** is used to convey information that is out of context with the manual text; special information such as specifications, techniques, reference information, and other information of a supplementary nature.

SAFETY

Improper operation can cause serious injury or death.

PRE-OPERATION

- **NEVER** use this attachment for purposes other than intended.
- Read the operator's manual for the "Skid Steer Loader". **NEVER** allow untrained people to operate.
- Operating instructions must be given to everyone before operating this machine and at least once a year thereafter in accordance with OSHA regulations.
- **NEVER** exceed the maximum recommended input power or speed specifications for the attachment. Over-powering or over-speeding the attachment may cause personal injury and/or machine damage.
- Keep all shields, guards, and covers in place.
- Do not modify equipment or add attachments that are not approved by Quick Attach LLC.
- Use adequate safety warning lights and devices as required by local regulations. Obey all local laws and regulations regarding machine operation on public property.

OPERATION

- Always wear eye protection that meets z87.1 or use with a loader enclosure that provides similar protection.
- Hydraulic connections may be hot after use. Use gloves if connecting or disconnecting after use.
- Check and be sure all operating controls are in neutral before starting the engine.
- Keep people away from loader and attachment when in use. This attachment send objects flying and has rotating parts. **NEVER** direct discharge toward people - rocks and debris can be thrown.

OPERATION (continued)

- Depending on how this attachment is used, dust can be created. Prolonged exposure to dust can cause chronic and acute health problems. A NIOSH-approved respirator may be required.
- **NEVER** operate near embankments or terrain that is so steep that rollover could occur.
- Always stay in the operator position when using the attachment.
- Before leaving the operators position, disengage hydraulic drive, lower the attachment to rest flat on the ground, stop engine, set park brake, and wait for all motion to stop.
- **NEVER** place hands in the discharge area or clear debris while engine is running.

AVOID HIGH PRESSURE FLUIDS HAZARD

- Escaping fluid under pressure can penetrate the skin causing serious injury.
- Avoid the hazard by relieving the pressure before disconnecting hydraulic lines.
- Use a piece of paper or cardboard, **NOT BODY PARTS**, to check for suspected leaks. Wear protective gloves and safety glasses or goggles when servicing or performing maintenance on hydraulic systems.
- If an accident occurs, see a doctor immediately. Any fluid injected into the skin must be surgically removed within a few hours or gangrene may result.

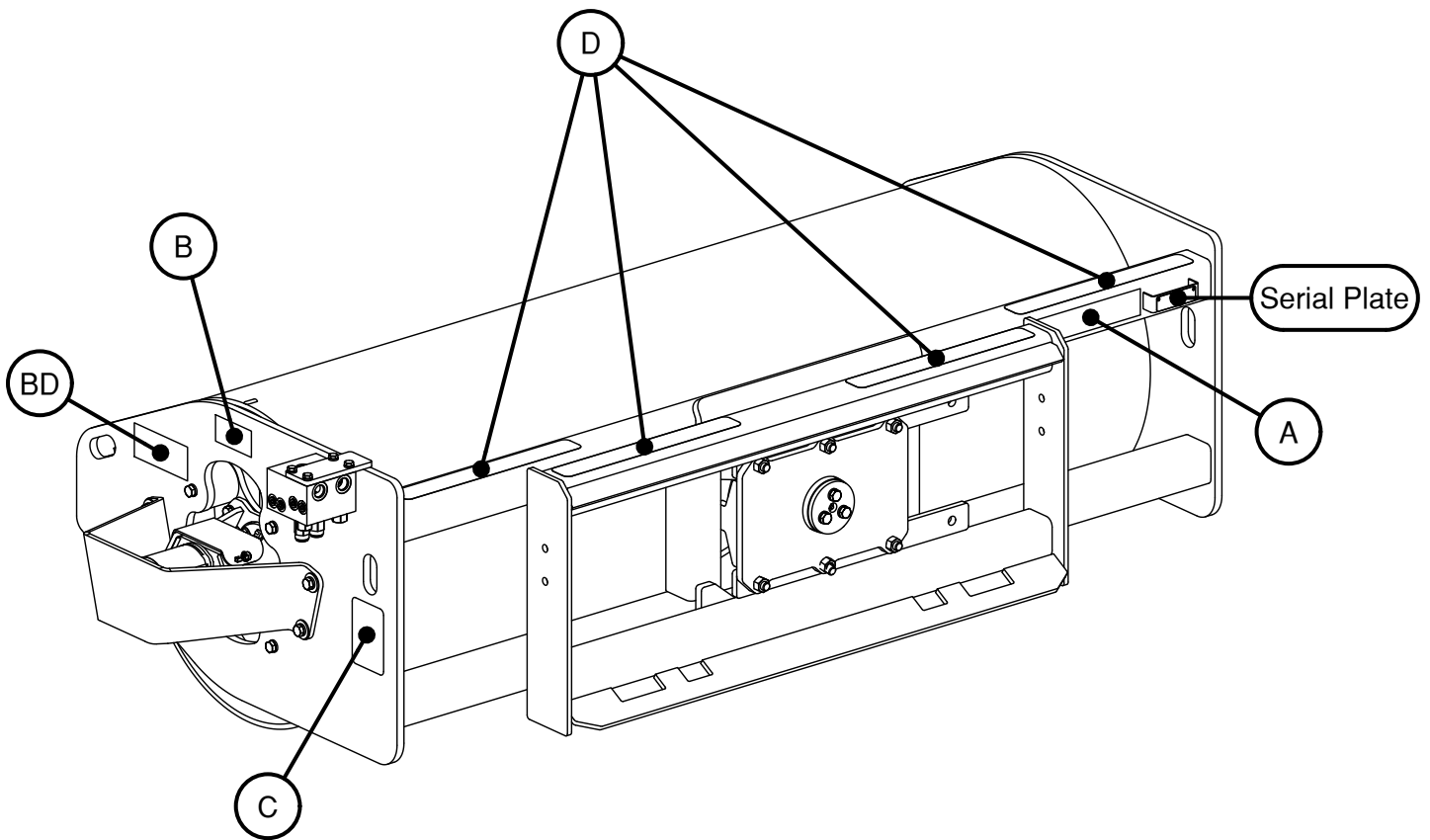
MAINTENANCE

- **NEVER** make adjustments, lubricate, clean, or perform any service on the machine while it is in operation.
- Make sure the attachment is serviced on a daily basis. Improper maintenance can cause serious injury or death in addition to damage to the attachment and/or your equipment.

DECAL INFORMATION

Serial Number Location:

It is important to refer to the serial number of your attachment when making repairs or ordering parts. Early or later models (identification made by serial number) may use different parts, or it may be necessary to use different procedures in doing a specific operation. Please see below for Serial Plate location.



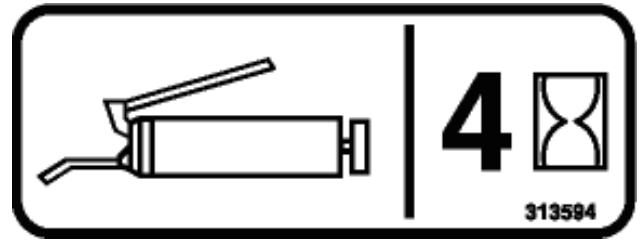
DECAL INFORMATION

A



Part number: 314526
 Location: on frame, between mount frame and serial plate bracket
 Quantity: 1

B



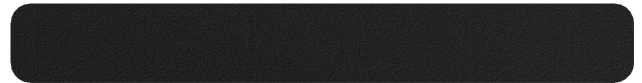
Part number: 313594
 Location: On each endplate above cutouts
 Quantity: 2

C



Part number: 200001
 Location: Left side end plate, below rear lift slot
 Quantity: 1

D



Part number: 202153 (ANTI-SKID TAPE 2 X 16)
 Location: Top of frame and mount tubes
 Quantity: 4

BD



Brand Decal: Small
 Location: On each endplate
 Quantity: 2

Safety Decals Locations:

The locations of the safety decals are shown. If these decals are missing, damaged, or painted over they must be replaced. Call Quick Attach LLC (218-435-4045) for replacement decals.

MOUNTING INSTRUCTIONS

After the initial set-up assembly is completed use the following procedure to mount the attachment to the loader for user operation.

⚠ WARNING

Coupler wedges or pins must extend through holes in attachment. Levers must be fully down and locked. Failure to secure wedges or pins can allow the attachment to come off and cause injury or death.

1. Use the step, safety treads, and grab handles to get on and off the loader and attachment.
2. Sitting in the operator's seat, lower seat bar (if so equipped) and fasten the seat belt.
3. Drive the loader to the rear of the attachment. Put the loader quick attach coupler into the attachment mounting bracket.
4. Tilt the loader coupler backward a small amount until it is fully engaged in the attachment mounting bracket.
5. Stop the engine and engage the park brake.
6. Secure the coupler locking mechanism that attaches the attachment to the loader.
7. Connect the hydraulic quick couplers from the attachment to the loader.



IMPORTANT: Wipe the ends of the hydraulic quick couplers (both lead and loader) with a rag to remove any possible contamination. Contamination can cause hydraulic components to fail and is not covered under warranty.

IMPORTANT: Make sure the quick couplers are fully engaged. If the quick couplers do not fully engage, check to see that the couplers are the same size and brand. Do not force the quick couplers together.

MOUNTING INSTRUCTIONS

NOTE: See the loader's operator's manual for auxiliary hydraulic specifications and connection instructions.

NOTE: Attachment is shipped with 12FJX (1-1/16" Female JIC Swivel) fittings on the ends of the lead hoses.

8. Make sure hoses and harness are routed properly to fit your specific loader. If the hoses are not routed properly, hoses may get pinched or rub on tires. Be sure to check the hose routing through the full range of intended motion of the attachment before operating it.

IMPORTANT: Proper hose and harness routing is the responsibility of the owner and/or operator. Pinched or stretched hoses and harnesses are not covered under warranty.

NOTE: More than one routing may be acceptable depending on the loader. Pick the routing that best suits your loader.

NOTE: Mounting is now complete and the attachment is ready for operation. Use reverse order of above instructions to dismount the attachment from the loader.



OPERATING INSTRUCTIONS

1. With the operator in the seat of the loader, the seatbelt fastened, and the seat bar lowered (if so equipped), start the engine.
2. With the loader arms fully lowered, position the attachment flat on the ground.
3. With the loader engine RPM at an idle, engage the auxiliary hydraulics in continuous flow mode to operate the attachment motor in the desired direction.

IMPORTANT: Only engage and disengage the auxiliary hydraulics with the loader engine RPM as low as possible. Failure to do so will result in premature coupler wear.

4. Gradually increase the loader engine speed until the attachment has reached its maximum RPM.

IMPORTANT: The attachment has an RPM limiter for the motor. When the motor has reached this limit, DO NOT continue increasing loader engine RPM. Doing so will increase the heat in the skid steer hydraulic system.

5. Slowly drive forward or backward to begin compacting in the desired direction.

IMPORTANT: Raise the attachment off of the ground when turning.

NOTE: The direction that the motor rotates influences how well the drum will roll along the ground as the attachment is driven in either the forward or reverse directions. Operate the motor accordingly.

6. Down pressure may be applied to the attachment by raising the skid steer's front tires off of the ground by 1" to 2". This will increase the compaction capabilities of the attachment. However, do this in a limited fashion, as the added weight will shorten the lifespan of the isolation mounts.



ROUTINE MAINTENANCE





⚠ WARNING

Lower the attachment to rest flat on the ground, shut down the engine, relieve the hydraulic pressure to the attachment, set the park brake, and wait for all motion to stop before leaving the operator's seat to perform service of any kind.

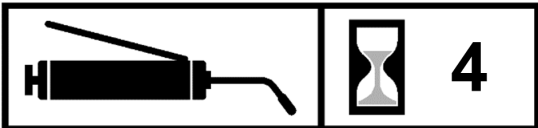
It is the operator's responsibility to make daily inspections of the loader and attachment for damage, loose bolts, fluid leaks, or anything else that could cause a potential service or safety problem. Preventive maintenance is the easiest and least expensive type of maintenance.

IMPORTANT: Bolts can loosen after initial usage. After the first hour of operation check all bolts.

LUBRICATION

| | | | | |
|---------------------------|---|--|---|--|
| Lubrication Legend |  Multipurpose spray lube |  Multipurpose grease lube |  Multipurpose oil lube |  Intervals at which lubrication is required |
|---------------------------|---|--|---|--|

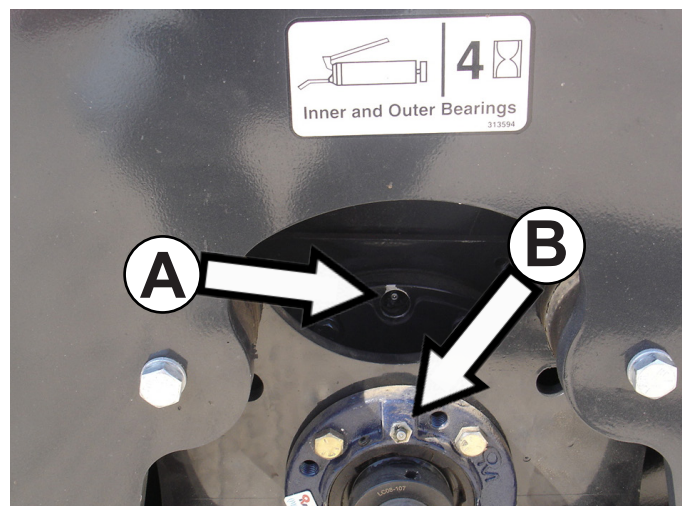
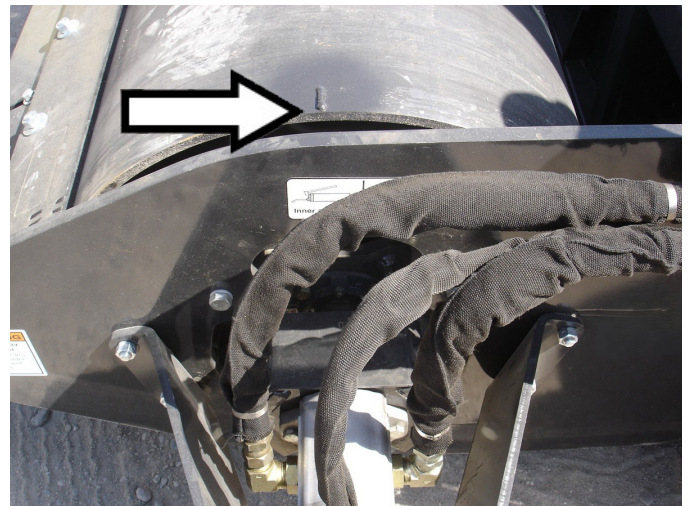
Use No. 2 lithium base gun grease when lubricating all attachment grease fittings.



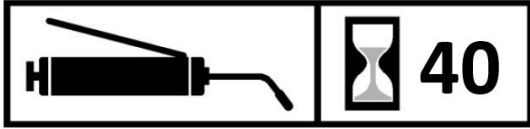
Roll the drum until the weld mark on the motor side is up, as shown, to position the hub bearing zerks for greasing.

Grease the two hub bearing zerks **[A]** and the two flange bearing zerks **[B]** every **4 hours** of operation.

IMPORTANT: Do not over-grease bearing. Only add **two pumps** of grease every greasing interval.

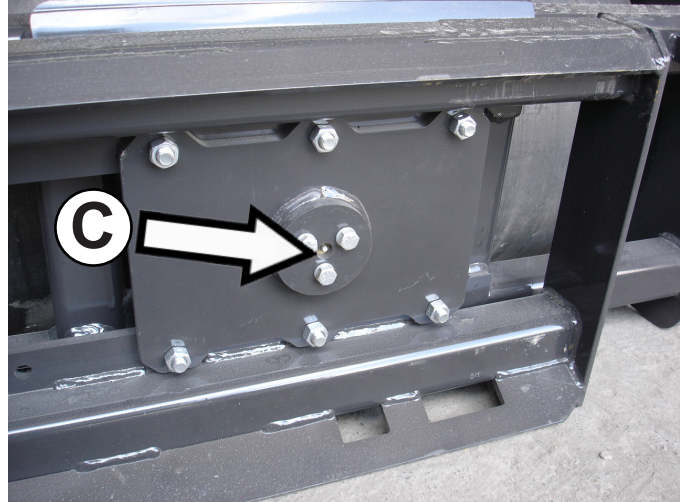


ROUTINE MAINTENANCE



Grease the center oscillation pivot [C] every **40 hours** of operation.

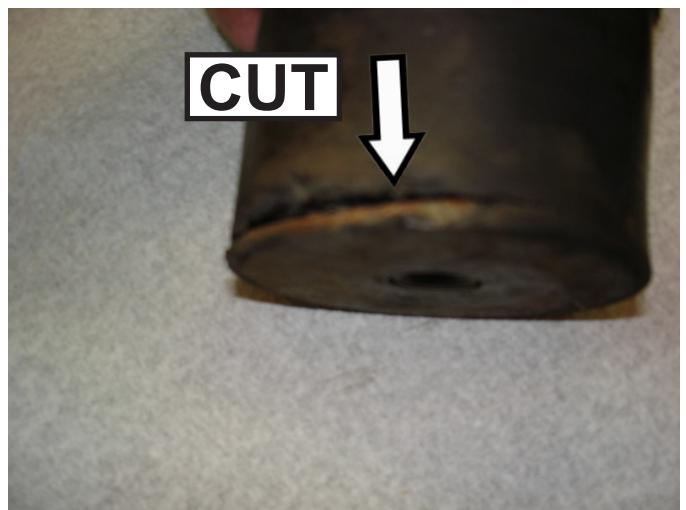
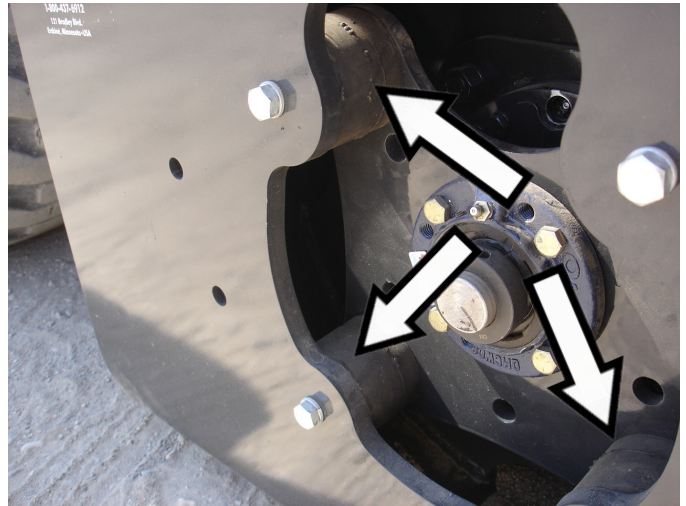
NOTE: The attachment must be disconnected from the loader in order to access this grease zerk



Visually inspect the eight isolation mounts (four on each end) for cuts or tears **weekly**.

IMPORTANT: If a rubber isolation mount has a cut or tear, it must be replaced. If it is not replaced, the remaining good isolation mounts will be put under more load, which will result in premature isolation mount failure.

IMPORTANT: Rubber isolation mounts that have a permanent deformation should be replaced.



ROUTINE MAINTENANCE

Visually check the drive coupler rubber member for wear every **80 hours** of operation.

1. Remove the two bolts from the coupler shield.
2. Visually inspect.
3. Grab the coupler and check by hand to see if it feels tight or loose.

NOTE: If the coupler is tight, it is in good operating condition. If the coupler is loose, it is a sign of wear, and replacement may soon be required.

4. Reinstall the coupler shield.



Scraper Maintenance

As the top and bottom scrapers wear, loosen the 3/8" bolts and slide the adjustment plate toward the drum accordingly.

NOTE: The smooth drum scraper is shown. The procedure to adjust the padded drum scraper is the same as the smooth.



TORQUE INFORMATION

Torque-Tension Relationships for SAE J429 Grade Bolts

| Nominal Thread Size | SAE J429 Grade 2 | | | SAE J429 Grade 5 | | | SAE J429 Grade 8 | | |
|-------------------------------------|------------------|-------------------|-------------|------------------|-------------------|------------|------------------|-------------------|------------|
| | Clamp Load (lbs) | Tightening Torque | | Clamp Load (lbs) | Tightening Torque | | Clamp Load (lbs) | Tightening Torque | |
| | | K = .15 | K = .20 | | K = .15 | K = .20 | | K = .15 | K = .20 |
| Unified Coarse Thread Series | | | | | | | | | |
| 1/4-20 | 1,300 | 49 in-lbs | 65 in-lbs | 2,000 | 75 in-lbs | 100 in-lbs | 2,850 | 107 in-lbs | 143 in-lbs |
| 5/16-18 | 2,150 | 101 | 134 | 3,350 | 157 | 210 | 4,700 | 220 | 305 |
| 3/8-16 | 3,200 | 15 ft-lbs | 20 ft-lbs | 4,950 | 23 ft-lbs | 31 ft-lbs | 6,950 | 32.5 ft-lbs | 44 ft-lbs |
| 7/16-14 | 4,400 | 24 | 30 | 6,800 | 37 | 50 | 9,600 | 53 | 70 |
| 1/2-13 | 5,850 | 36.5 | 49 | 9,050 | 57 | 75 | 12,800 | 80 | 107 |
| 9/16-12 | 7,500 | 53 | 70 | 11,600 | 82 | 109 | 16,400 | 115 | 154 |
| 5/8-11 | 9,300 | 73 | 97 | 14,500 | 113 | 151 | 20,300 | 159 | 211 |
| 3/4-10 | 13,800 | 129 | 173 | 21,300 | 200 | 266 | 30,100 | 282 | 376 |
| 7/8-9 | 11,425 | 125 | 166 | 29,435 | 321 | 430 | 41,550 | 454 | 606 |
| 1-8 | 15,000 | 187.5 | 250 | 38,600 | 482.5 | 640 | 54,540 | 680 | 900 |
| Unified Fine Thread Series | | | | | | | | | |
| 1/4-28 | 1,500 | 55 in-lbs | 75 in-lbs | 2,300 | 85 in-lbs | 115 in-lbs | 3,250 | 120 in-lbs | 163 in-lbs |
| 5/16-24 | 2,400 | 112 | 150 | 3,700 | 173 | 230 | 5,200 | 245 | 325 |
| 3/8-24 | 3,600 | 17 ft-lbs | 22.5 ft-lbs | 5,600 | 26 ft-lbs | 35 ft-lbs | 7,900 | 37 ft-lbs | 50 ft-lbs |
| 7/16-20 | 4,900 | 27 | 36 | 7,550 | 42 | 55 | 10,700 | 59 | 78 |
| 1/2-20 | 6,600 | 41 | 55 | 10,200 | 64 | 85 | 14,400 | 90 | 120 |
| 9/16-18 | 8,400 | 59 | 79 | 13,000 | 92 | 122 | 18,300 | 129 | 172 |
| 5/8-18 | 10,600 | 83 | 110 | 16,300 | 128 | 170 | 23,000 | 180 | 240 |
| 3/4-16 | 15,400 | 144 | 193 | 23,800 | 223 | 298 | 33,600 | 315 | 420 |
| 7/8-14 | 12,610 | 138 | 184 | 32,480 | 355 | 473 | 45,855 | 500 | 668 |
| 1-12 | 16,410 | 205 | 273 | 42,270 | 528 | 704 | 59,670 | 745 | 995 |

Clamp load estimated as 75% of proof load for specified bolts.

Torque values for 1/4 and 5/16 inch series are in inch-pounds. All other torque values are in foot-pounds.

Torque values calculated from formula $T = KDF$

where: $K=0.15$ for "lubricated" conditions

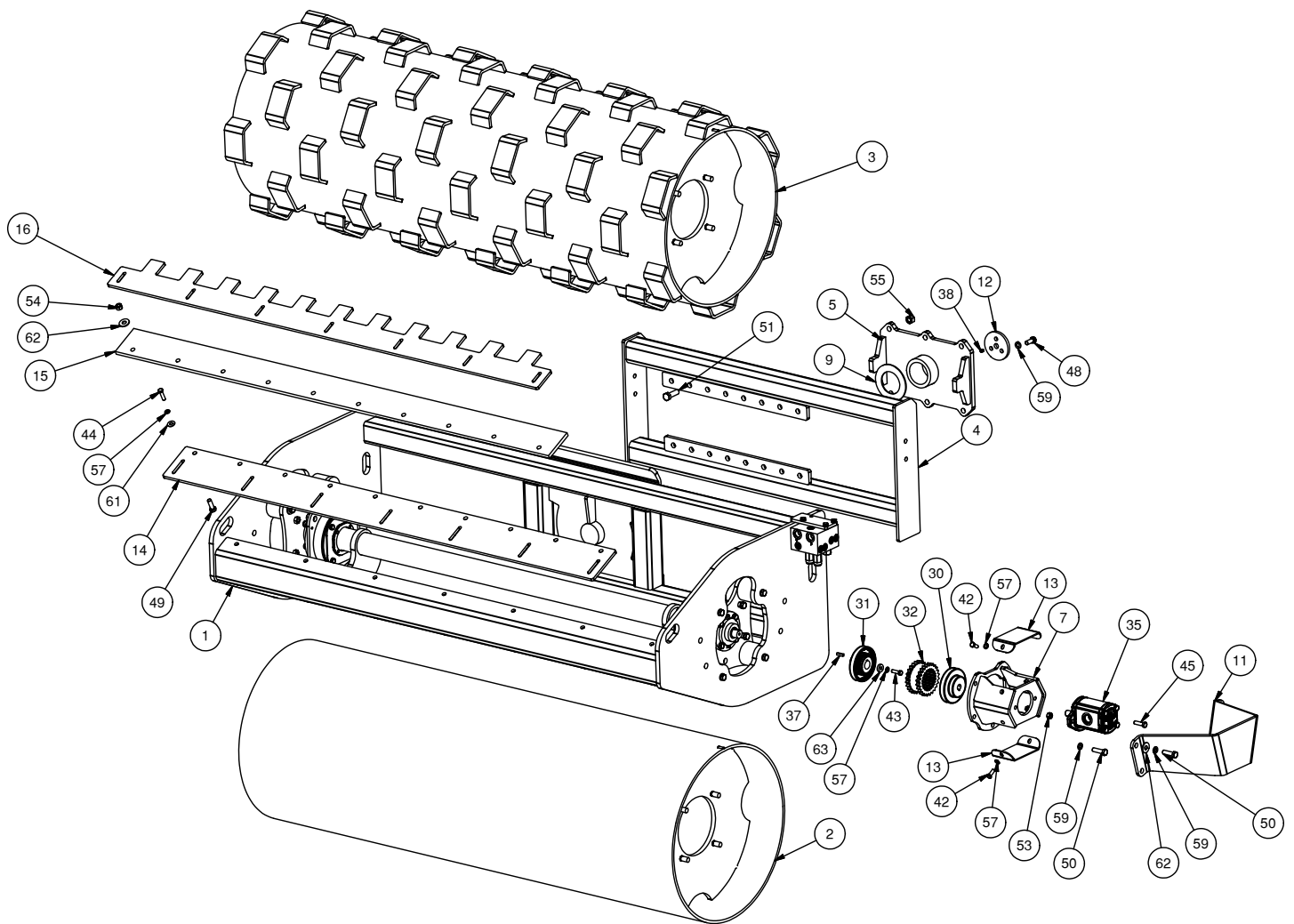
$K=0.20$ for "dry" conditions

PARTS INFORMATION

VIBRATORY ROLLER

| ITEM | 72 | 80 | PART NUMBER | DESCRIPTION | STOCK NO. |
|------|----|----|-------------|-----------------------------|------------------------------|
| 1 | 1 | 0 | 313501 | FRAME 72 W/A | |
| | 0 | 1 | 313503 | FRAME 80 W/A | |
| 2 | 1 | 0 | 313508 | DRUM 72 SMOOTH W/A | |
| | 0 | 1 | 313512 | DRUM 80 SMOOTH W/A | |
| 3 | 1 | 0 | 314538 | DRUM 72 PADDED W/A | |
| | 0 | 1 | 313513 | DRUM 80 PADDED W/A | |
| 4 | 1 | 1 | 313506 | MOUNT W/A | |
| 5 | 1 | 1 | 313507 | PIVOT W/A | |
| 7 | 1 | 1 | 314518 | MOTOR MOUNT W/A | |
| 9 | 1 | 1 | 317102 | WEAR PLATE PAINTED | |
| 11 | 1 | 1 | 313542-02 | PLATE MOTOR SHIELD PAINTED | |
| 12 | 1 | 1 | 313538 | PLATE PIVOT KEEPER PAINTED | |
| 13 | 2 | 2 | 314522 | SHIELD COUPLER PAINTED | |
| 14 | 2 | 0 | 313587 | PLATE SCRAPER SM 72 PAINTED | |
| | 0 | 2 | 313529 | PLATE SCRAPER SM 80 PAINTED | |
| 15 | 2 | 0 | 313530 | SCRAPER SM 72 URETHANE | |
| | 0 | 2 | 313530 | SCRAPER SM 80 URETHANE | |
| 16 | 2 | 0 | 313523-02 | PLATE SCRAPER PD 72 PAINTED | |
| | 0 | 2 | 313527-02 | PLATE SCRAPER PD 80 PAINTED | |
| 30 | 1 | 1 | 313576 | COUPLER 7S 3/4" | |
| 31 | 1 | 1 | 313575 | COUPLER 7S 1-1/8" | |
| 32 | 1 | 1 | 313574 | COUPLER 7JN | |
| 37 | 1 | 1 | 300251 | KEY SQ 1/4 X 1 | |
| 38 | 1 | 1 | 60105 | ZERK GREASE 1/4-28 UNF STR | |
| 42 | 8 | 8 | 13105 | BOLT HEX | 3/8 X 1 - UNC - GR 5 |
| 44 | 14 | 16 | 103879 | BOLT HEX | 3/8 X 1.5 - UNC - GR 5 |
| 45 | 2 | 2 | 13159 | BOLT HEX | 7/16 X 1.5 - UNC - GR 5 |
| 48 | 3 | 3 | 13207 | BOLT HEX | 1/2 X 1-1/4 - UNC - GR 5 |
| 49 | 20 | 22 | 13209 | BOLT HEX | 1/2 X 1-1/2 - UNC - GR 5 |
| 50 | 9 | 9 | 13210 | BOLT HEX | 1/2 X 1-3/4 - UNC - GR 5 |
| 51 | 6 | 6 | 13311 | BOLT HEX | 5/8 X 2 - UNC - GR 5 |
| 53 | 2 | 2 | 37213 | NUT HEX | 7/16 - UNC - GR 5 - REV LOCK |
| 54 | 20 | 22 | 37214 | NUT HEX | 1/2 - UNC - GR 5 - REV LOCK |
| 55 | 6 | 6 | 37216 | NUT HEX | 5/8 - UNC - GR 5 - REV LOCK |
| 57 | 42 | 45 | 103880 | WASHER LOCK | 3/8 - GR 5 |
| 59 | 28 | 28 | 33626 | WASHER LOCK | 1/2 - GR 5 |
| 61 | 14 | 16 | 33008 | WASHER FLAT | 3/8 - USS - GR 5 |
| 62 | 32 | 34 | 33012 | WASHER FLAT | 1/2 - USS - GR 5 |
| 63 | 1 | 1 | 313593 | WASHER FLAT | 3/8 WASHER 1/4 GR50 |
| 64 | 1 | 1 | 410374 | KEY SQ 3/16 X 1 | |

PARTS INFORMATION

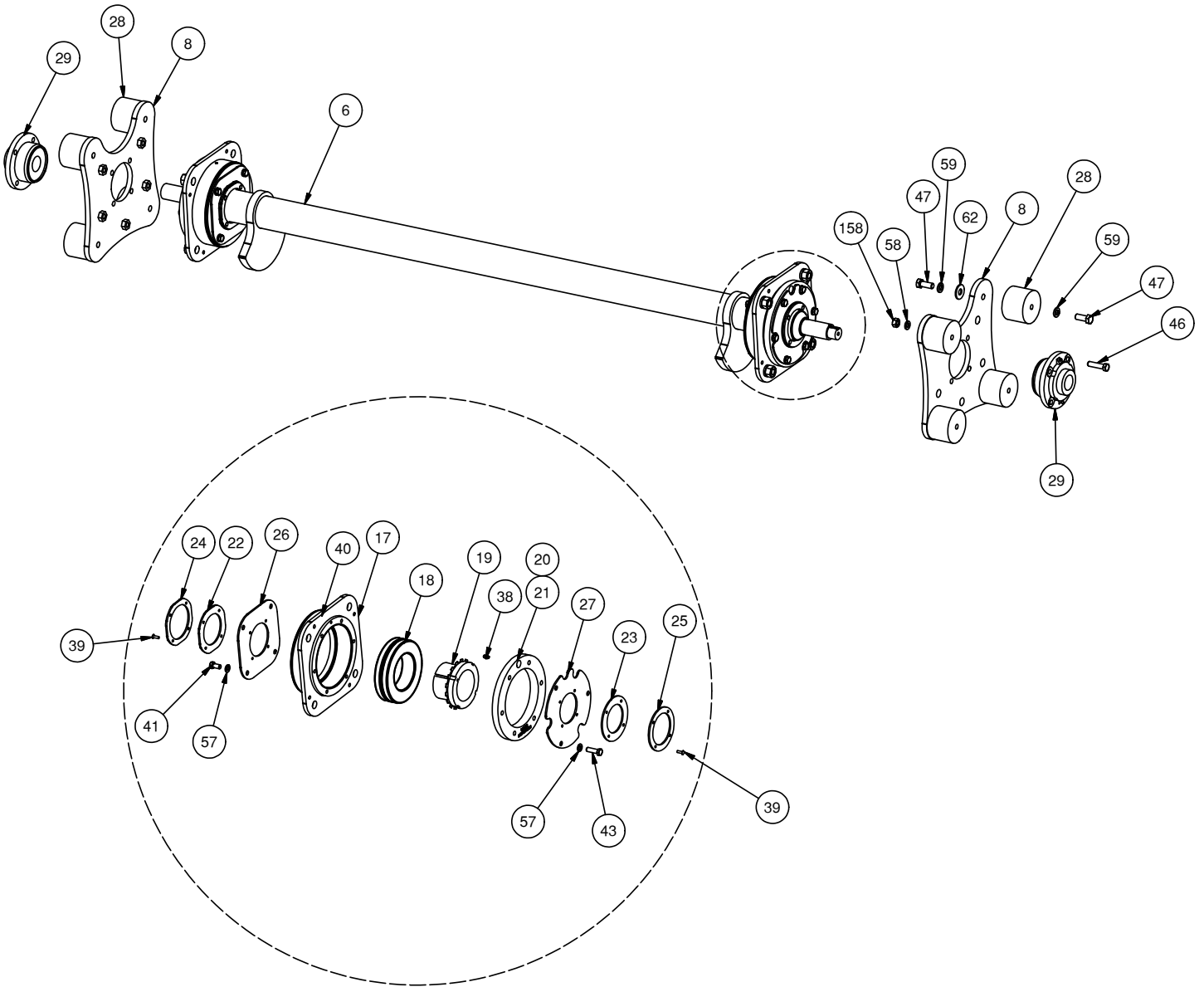


PARTS INFORMATION

SHAFT AND BEARING ASSEMBLY

| ITEM | 72 | 80 | PART NUMBER | DESCRIPTION | STOCK NO. |
|------|----|----|-------------|-------------------------------|--------------------------|
| 6 | 1 | 0 | 313510 | SHAFT 72 W/A | |
| | 0 | 1 | 313509 | SHAFT 80 W/A | |
| 8 | 2 | 2 | 314510 | PLATE ISOLATION MOUNT W/A | |
| 17 | 2 | 2 | 314521 | BEARING HOUSING MACHINED | |
| 18 | 2 | 2 | 313511 | BRG DRUM | |
| 19 | 2 | 2 | 313580 | BRG TAPER ADAPTER | |
| 20 | 1 | 1 | 313540 | TUBE BRG SPACER | |
| 21 | 1 | 1 | 313551 | TUBE BRG SPACER MOTOR SIDE | |
| 22 | 2 | 2 | 314507 | SEAL BRG INNER | |
| 23 | 2 | 2 | 314506 | SEAL BRG OUTER | |
| 24 | 2 | 2 | 314505 | PLATE BRG SEAL INNER | |
| 25 | 2 | 2 | 314504 | PLATE BRG SEAL OUTER | |
| 26 | 2 | 2 | 313581 | PLATE BRG COVER INNER | |
| 27 | 2 | 2 | 313550 | PLATE BRG COVER OUTER | |
| 28 | 8 | 8 | 314525 | MOUNT RUBBER | |
| 29 | 2 | 2 | 313568 | BRG 1-7/16 SPHERICAL W/FLANGE | |
| 38 | 2 | 2 | 60105 | ZERK GREASE 1/4-28 UNF STR | |
| 39 | 16 | 16 | 62180 | RIVET 3/16 X 3/8 CLOSED | |
| 40 | 2 | 2 | 25396 | SET SCREW | 1/4 X 0.25 - UNF - GR 5 |
| 41 | 8 | 8 | 13103 | BOLT HEX | 3/8 X 0.75 - UNC - GR 5 |
| 43 | 13 | 13 | 13107 | BOLT HEX | 3/8 X 1.25 - UNC - GR 5 |
| 46 | 8 | 8 | 13160 | BOLT HEX | 7/16 X 1.75 - UNC - GR 5 |
| 47 | 16 | 16 | 17207 | BOLT HEX | 1/2 X 1-1/4- UNF - GR 5 |
| 52 | 8 | 8 | 36108 | NUT HEX | 7/16 - UNC - GR 5 - REG |
| 56 | 8 | 8 | 36464 | NUT HEX FULL | 5/8 - UNF - GR 8 - REG |
| 57 | 21 | 21 | 103880 | WASHER LOCK | 3/8 - GR 5 |
| 58 | 8 | 8 | 33624 | WASHER LOCK | 7/16 - GR 5 |
| 59 | 28 | 28 | 33626 | WASHER LOCK | 1/2 - GR 5 |
| 60 | 8 | 8 | 33897 | WASHER LOCK | 5/8 - GR 8 |
| 62 | 32 | 34 | 33012 | WASHER FLAT | 1/2 - USS - GR 5 |

PARTS INFORMATION



PARTS INFORMATION

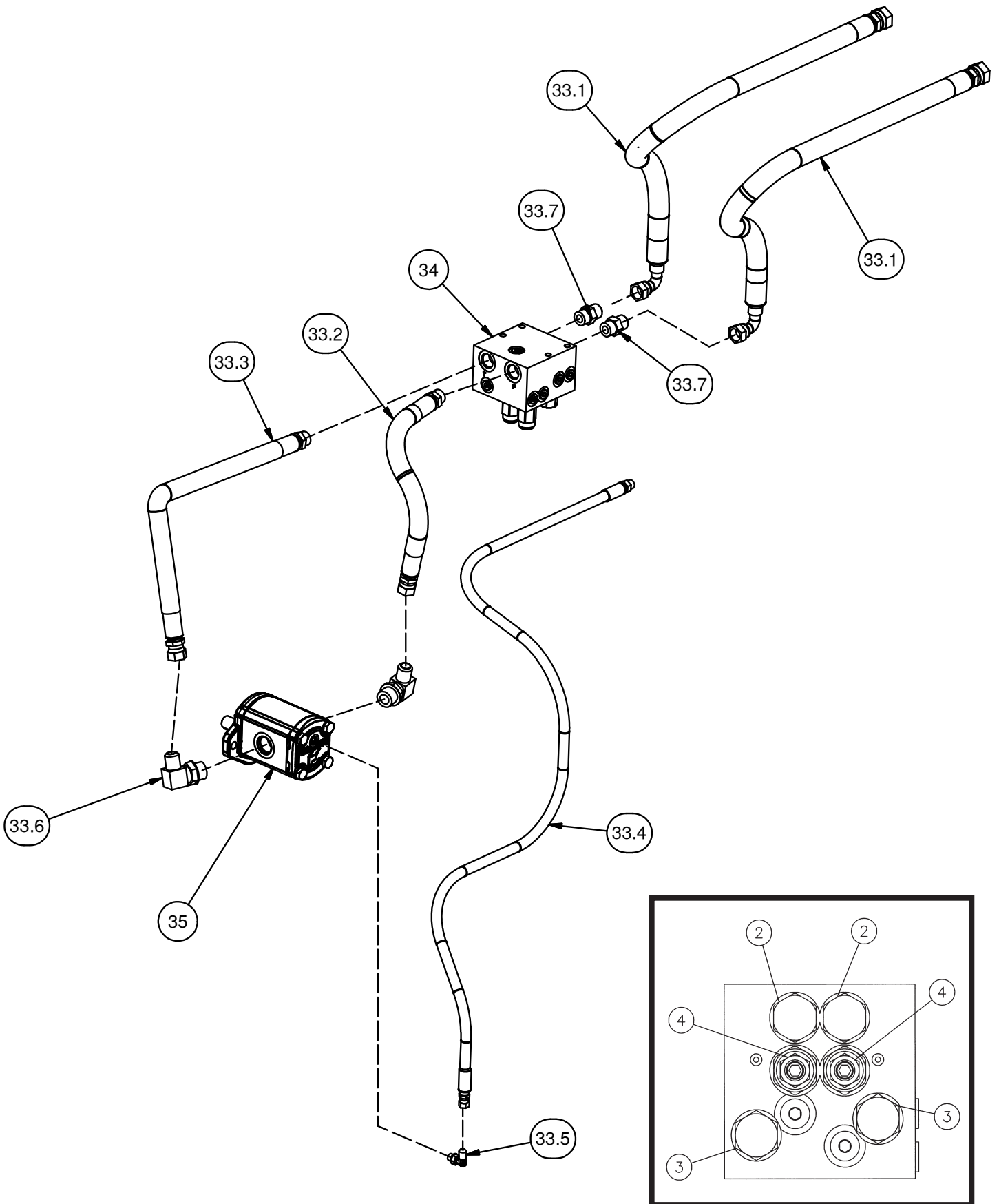
HYDRAULICS

| ITEM | QTY | PART NUMBER | DESCRIPTION | STOCK NO. |
|------|-----|-------------|------------------------------|--------------------------------|
| 33:1 | 2 | 313595 | HOSE 5/8 X 58 12FJX-10FJX-90 | LEAD |
| 33:2 | 1 | 313596 | HOSE 1/2 X 17 10MB-10FJX | MOTOR TO VALVE |
| 33:3 | 1 | 313597 | HOSE 1/2 X 22 10MB-10FJX | MOTOR TO VALVE |
| 33:4 | 1 | 330894 | HOSE 1/2 X 80 6FJX-8FJX | CD (REPLACED 314540) |
| | 1 | 314540 | HOSE 1/4 X 80 4FJX-6FJX | CD (REPLACED BY 330894) |
| | 1 | 313598 | HOSE 1/4 X 20 6MB-4FJX | CD (REPLACED BY 314540) |
| 33:5 | 1 | 330919 | ADPT ELBOW 4MB-6MJ-90 | REPLACED 103497 |
| | 1 | 103497 | ADPT ELBOW 4MB-4MJ-90 | REPLACED BY 330919 |
| 33:6 | 2 | 300215 | ADPT ELBOW 12MB-10MJ -90 | |
| 33:7 | 2 | 201852 | ADPT STRAIGHT 10MB-10MJ | |
| 34 | 1 | 300501 | VALVE BLOCK | |
| 35 | 1 | 313545 | MOTOR | |
| | 1 | 314527 | SEAL KIT – MOTOR | PARTS ONLY |

VALVE ASSEMBLY

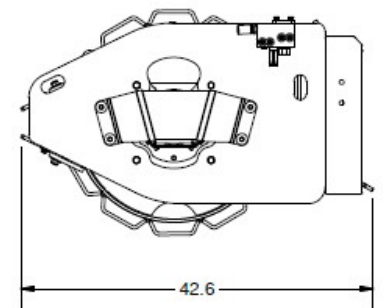
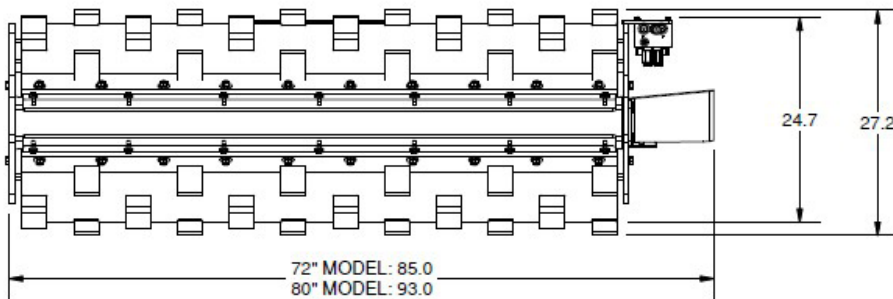
| ITEM | QTY | PART NO. | DESCRIPTION | STOCK NO. |
|------|-----|----------|-------------------------|-----------|
| 2 | 2 | 314536 | VALVE – check | |
| 3 | 2 | 316118 | LOGIC ELEMENT | |
| 4 | 2 | 300505 | VALVE – pressure relief | |

PARTS INFORMATION



GENERAL SPECS

| Model | 72 SMOOTH | 72 PADDED | 80 SMOOTH | 80 PADDED |
|--------------------------|--------------|--------------|--------------|--------------|
| Working Width – Straight | 72" | 72" | 80" | 80" |
| Dynamic Force | 3723 lb. | 3723 lb. | 3723lb. | 3723lb. |
| Amplitude | .06" | .06" | .06" | .05" |
| Dynamic Linear Force | 51 lb./in. | 207 lb./in. | 47 lb./in. | 191 lb./in. |
| Compacting Energy | 174 lbf.*in. | 157 lbf.*in. | 167 lbf.*in. | 151 lbf.*in. |
| Vibrations per Minute | 2000* vpm | 2000* vpm | 2000* vpm | 2000* vpm |
| Hydraulic Flow Range | 11-22* gpm | 11-22* gpm | 11-22* gpm | 11-22* gpm |
| Operating Weight | 1720 lbs. | 1870 lbs. | 1880 lbs. | 2025 lbs. |



ALL DIMENSIONS IN INCHES

*The valve block limits the flow to the motor so the max speed is 2000 rpm at 18 gpm



LIMITED WARRANTY

Quick Attach Attachments, LLC warrants each new machine manufactured by us to be free from defects in material and workmanship for a period of twenty-four (24) months from date of delivery to the original purchaser.

Our obligation under this warranty is to replace free of charge, at our factory or Direct Outlet locations, any part proven defective within the stated warranty time limit.

All parts must be returned freight prepaid and adequately packaged to prevent damage in transit.

This warranty does not cover:

1. New products which have been operated in excess of rated capacities or negligence
2. Misuse, abuse, accidents or damage due to improperly routed hoses
3. Machines which have been altered, modified or repaired in any manner not authorized by our company
4. Previously owned equipment
5. Any ground engaging tools in which natural wear is involved, i.e. tooth tips, cutting teeth, etc
6. Normal maintenance
7. Fork tines
8. Hydraulic motors that have been disassembled in any manner

In no event will the Sales Representative, Direct Outlet, Quick Attach Attachments, LLC, or any other company affiliated with it or them be liable for incidental or consequential damages or injuries, including but not limited to the loss of profit, rental or substitute equipment or other commercial loss. Purchaser's sole and exclusive remedy being as provided here in above.

Quick Attach Attachments, LLC must receive immediate notification of defect and no allowance will be made for repairs without our consent or approval.

This warranty is in lieu of all other warranties, express or implied by law or otherwise, and there is no warranty of merchantability or fitness purpose.

No agent, employee, or representative of Quick Attach Attachments, LLC has any authority to bind Quick Attach Attachments, LLC to any warranty except as specifically set forth herein. Any of these limitations excluded by local law shall be deemed deleted from this warranty; all other terms apply.

This warranty may not be enlarged or modified in any manner except in writing signed by an executive officer of Quick Attach Attachments, LLC to improve its products whenever it is possible and practical to do so. Quick Attach Attachments, LLC reserves the right to make changes and or add improvements at any time without incurring any obligation to make such changes or add such improvements to products previously sold.

Quick Attach Attachments, LLC
P.O. Box 128 Alexandria, MN 56308
Phone (320) 759-1551
Fax (320) 759-1590

