

QUICK ATTACH



Trench-ItTM

Low Flow and High Flow Trenchers

For

Skid Steer Loaders

Operation & Maintenance Manual



Read this Manual Before Use

TABLE OF CONTENTS

SAFETY	3-4
SERIAL NUMBER/DECAL LOCATION	5-6
MOUNTING INSTRUCTIONS	7-8
OPERATING INSTRUCTIONS	9-13
ROUTINE MAINTENANCE	14
BOLT TORQUE INFORMATION	15
PARTS INFORMATION	16-25
GENERAL SPECIFICATIONS	26
WARRANTY	27

REFERENCE INFORMATION

Write the serial number for your attachment in the spaces below. Always refer to this serial number when calling for service or parts.

Serial Number.....

YOUR ATTACHMENTS DEALER

ADDRESS:

PHONE:

CONTACT:

NOTE: *Quick Attach Attachments LLC reserves the right to make improvements in design or changes in specifications at any time without notice and without incurring any obligations to install them on units previously sold.*

SAFETY

DO NOT use or perform maintenance on this machine until this manual has been read and understood. In addition, read the Operation and Maintenance Manual(s) pertaining to the attachment and the attachment carrier (“Loader”).

The user is responsible for inspecting the machine daily, and for having parts repaired or replaced when continued use of the machine would cause damage, excessive wear to other parts or make the machine unsafe for continued operation.

If an operating procedure, tool device, maintenance or work method not specifically recommended is used, you must satisfy yourself that it is safe for you and others. You must also ensure that the attachment will not be damaged or made unsafe by the procedures you choose.

Quick Attach Attachments LLC cannot anticipate every possible circumstance that might involve potential hazard. The safety messages found in this manual and on the machine are therefore not all inclusive.

The signal words **CAUTION**, **WARNING**, or **DANGER** are used to indicate hazards.

⚠ CAUTION Indicates a potentially hazardous situation which, if not avoided, may result in minor or moderate injury.

⚠ WARNING Indicates a potentially hazardous situation which, if not avoided, could result in death or serious injury.

⚠ DANGER Indicates a potentially hazardous situation which, if not avoided, will result in death or serious injury.

The word **IMPORTANT** is used in the text when immediate damage will occur due to improper technique or operation.

The word **NOTE** is used to convey information that is out of context with the manual text; special information such as specifications, techniques, reference information, and other information of a supplementary nature.

Call Before You Dig
1-888-258-0808



Improper operation can cause serious injury or death.

Pre-operation

- This attachment is designed to be used for digging utility or drainage trenches. **NEVER** use this machine for any other purpose.
- Read the operator's manual for the "Skid Steer Loader". **NEVER** allow untrained people to operate.
- Operating instructions must be given to everyone before operating this attachment and at least once a year thereafter in accordance with OSHA regulations.
- **NEVER** exceed the maximum recommended input power or speed specifications for the attachment. Over-powering or over-speeding the attachment may cause personal injury and/or machine damage.
- Keep all shields, guards, and covers in place.
- Do not modify equipment or add attachments that are not approved by Quick Attach Attachments LLC.
- Use adequate safety warning lights and devices as required by local regulations. Obey all local laws and regulations regarding machine operation on public property. Always call before you dig (1-888-258-0808). When you call, you will be directed to a location in your state/city for information about buried lines (electric, telephone, cable TV, water, sewer, gas, etc.).

Operation

- Always wear eye protection that meets ANSI z87.1 or operate with an enclosure that provides similar protection.
- Hydraulic connections may be hot after use. Use gloves if connecting or disconnecting after use.
- Check and be sure all operating controls are in neutral before starting the engine.

Operation (continued)

- Keep people away from the loader and attachment when in use. This attachment has rotating parts.
- **NEVER** operate near embankments or terrain that is so steep that rollover could occur.
- Always stay in the operator position with seatbelt fastened when using the attachment.
- Before leaving the operators position, disengage hydraulic drive, lower attachment to rest flat on the ground, stop engine, set park brake, and wait for all motion to stop.
- **NEVER** place hands near attachment or clear debris while the engine is running.

Avoid High Pressure Fluids Hazard

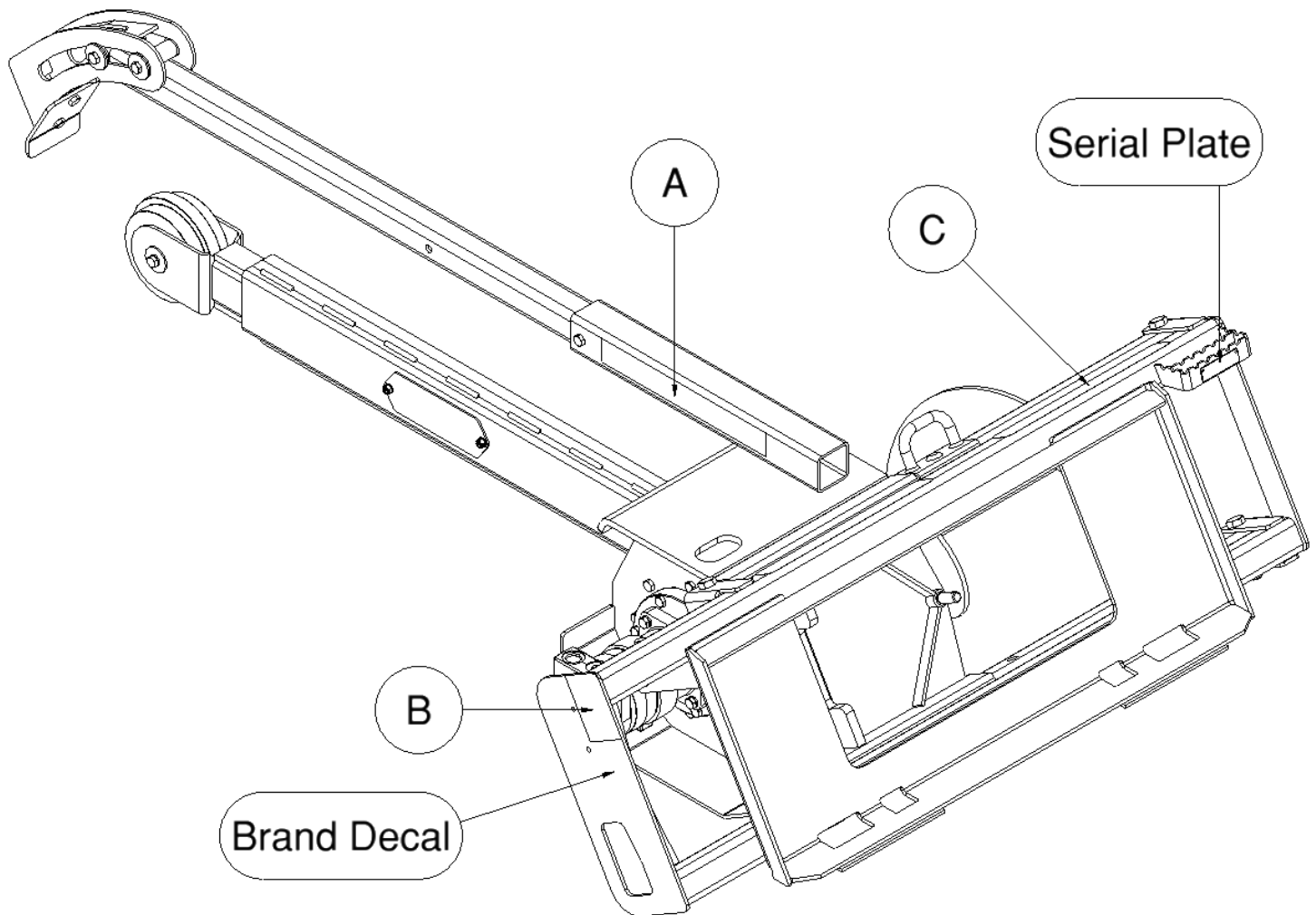


- Escaping fluid under pressure can penetrate the skin causing serious injury.
 - Avoid the hazard by relieving the pressure before disconnecting hydraulic lines.
 - Use a piece of paper or cardboard, NOT BODY PARTS, to check for suspected leaks. Wear protective gloves and safety glasses or goggles when servicing or performing maintenance on hydraulic systems.
 - If an accident occurs, see a doctor immediately. Any fluid injected into the skin must be surgically removed within a few hours or gangrene may result.
- ### Maintenance
- **NEVER** make adjustments, lubricate, clean, or perform any service on the machine while it is in operation.
 - Make sure the attachment is serviced on a daily basis. Improper maintenance can cause serious injury or death in addition to damage to the attachment and/or your equipment.

SERIAL NUMBER AND SAFETY DECAL LOCATIONS

Serial Number Location:

It is important to refer to the serial number of the attachment when making repairs or ordering parts. Early or later models (identification made by serial number) may use different parts, or it may be necessary to use different procedures in doing a specific operation.

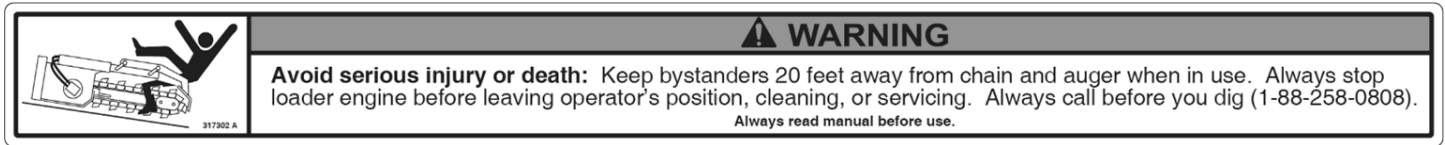


SERIAL NUMBER AND SAFETY DECAL LOCATIONS

Safety Decals Locations:

The locations of the safety decals are shown. If these decals are missing, damaged, or painted over they must be replaced. Call Quick Attach Attachments LLC (320-759-1551) for replacement decals.

(A)



Part number: 317302

Location: Both sides of crumber tube mount

Quantity: 2

(B)



Part number: 200001

Location: LH side of top frame plate

Quantity: 1

(C)

Part number: 202153 (Anti-Skid Tape 2 x 16)

Location: Top of frame assembly

Quantity: 2

Small Brand Decal

Location: Left side of frame assembly

Quantity: 1

MOUNTING INSTRUCTIONS

After the initial set-up assembly is completed use the following procedure to mount the attachment to the loader for user operation.

⚠ CAUTION Coupler wedges or pins must extend through the holes in attachment. Levers must be fully down and locked. Failure to secure wedges or pins can allow attachment to come off and cause serious injury or death.



1. Use the step, safety treads, and grab handles to get on and off the loader and attachment.

⚠ CAUTION Always enter and exit the loader on the right side. Hoses can be a trip hazard and could cause serious injury.

2. Sitting in the operator's seat, lower the seat bar and fasten the seat belt.



3. Drive the loader to the rear of the attachment. Put the loader quick attach coupler into the attachment mounting bracket.

4. Tilt the loader coupler backward a small amount until it is fully engaged in the attachment mounting bracket.



5. Stop the engine and engage the park brake.
6. Secure the coupler locking mechanism that attaches the attachment to the loader.

MOUNTING INSTRUCTIONS

7. Connect the hydraulic quick couplers from the attachment to the loader.

IMPORTANT: Wipe the ends of the hydraulic quick couplers (both lead and loader) with a rag to remove any possible contamination. Contamination can cause hydraulic components to fail and is not covered under warranty.

IMPORTANT: Make sure the quick couplers are fully engaged. If the quick couplers do not fully engage, check to see that the couplers are the same size and brand. Do not force the quick couplers together.

NOTE: See the loader's operator's manual for auxiliary hydraulic specifications and connection instructions.

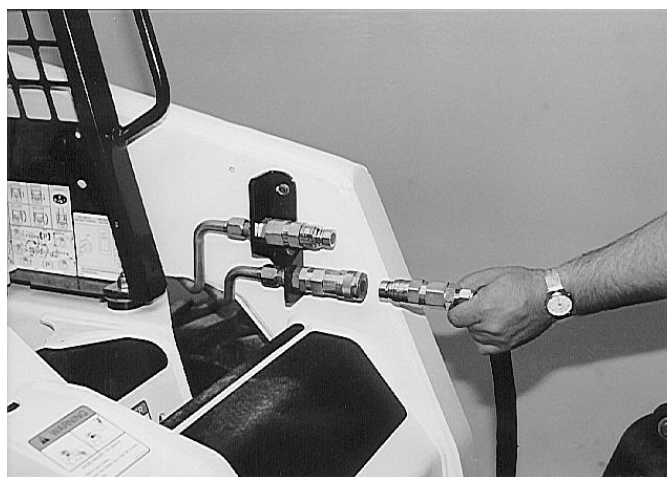
NOTE: Attachment is shipped with 12FJX (1-1/16" Female JIC Swivel fittings on the ends of the lead hoses.

8. Make sure the hoses are properly routed to fit your specific loader. If the hoses are not routed correctly, hoses may get pinched or rub on tires. Be sure to check the hose routing through the full range of intended motion of the attachment before operating it.

More than one routing may be acceptable depending on the loader. Pick the routing that best suits your loader.

IMPORTANT: Proper hose routing is the responsibility of the owner and/or operator. Pinched or stretched hoses are not covered under warranty.

Mounting is now complete and you are ready to use the attachment. Use the above instructions in the reverse order to dismount the attachment from the loader.



OPERATING INSTRUCTIONS

Manual Boom Side Shift Procedure (RIGHT)

The boom can be manually shifted to the right by up to 24". This allows for trenching next to obstacles such as trees and buildings.

IMPORTANT: When trenching in the shifted position, the spoil auger should be removed to avoid contacting obstacles and causing damage to the trencher.

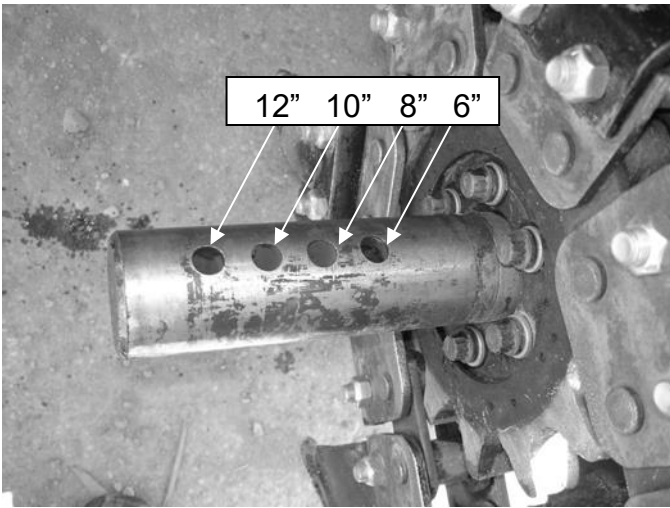
1. Remove the spoil auger for better clearance.
2. Remove the lynch pin and stop bracket from the trencher frame.
3. With the operator in the seat of the loader, the seat belt fastened, and the seat bar lowered (if so equipped), start the engine.

⚠ WARNING Keep bystanders away from attachment and loader. Moving parts can cause serious injury or death.

4. Tilt the attachment forward until the weight of the trencher rests flat on the ground.
5. Slowly turn the loader to the left to slide the trencher to the right side of the frame.
6. Stop the engine and engage the park brake.
7. Reinstall the stop bracket and lynch pin in the trencher frame.



OPERATING INSTRUCTIONS



Manual Boom Side Shift Procedure (LEFT)

1. Remove the lynch pin and stop bracket from the trencher frame.
2. With the operator in the seat of the loader, the seat belt fastened, and the seat bar lowered (if so equipped), start the engine.

⚠ WARNING Keep bystanders away from attachment and loader. Moving parts can cause serious injury or death.



3. Tilt the attachment forward until the weight of the trencher rests flat on the ground.
4. Slowly turn the loader to the right to slide the trencher to the left side of the frame.

5. Stop the engine and engage the park brake.



6. Reinstall the stop bracket and lynch pin in the trencher frame.
7. Reattach the spoil auger. Select the correct bolt hole for auger to correspond to your width of chain (see picture to left).

ROUTINE MAINTENANCE

⚠ CAUTION Lower the attachment to rest flat on the ground, shut down the engine, relieve hydraulic pressure to the attachment, wait for all motion to stop, and set park brake before leaving the operator's seat to perform service of any kind.

It is the operator's responsibility to make daily inspections of the loader and attachment for damage, loose bolts, fluid leaks, or anything else that could cause a potential service or safety problem. Preventive maintenance is the easiest and least expensive type of maintenance.

IMPORTANT: Bolts and set screws can loosen after initial usage. After the first hour of operation check all bolts and set screws. Continue to check for loose hardware every **10 hours** of operation.

CHAIN TENSION ADJUSTMENT PRECEDURE

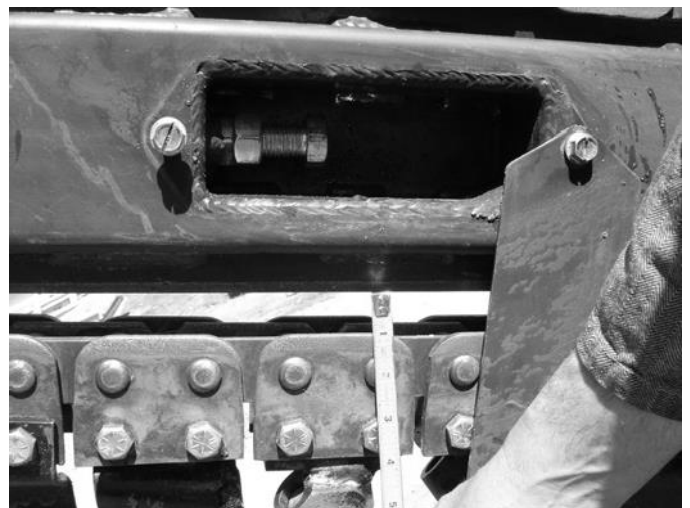
IMPORTANT: Improper maintenance can cause extensive damage to the attachment and/or your equipment.

IMPORTANT: Chain should be inspected for proper tension after the first hour of operation and every 4 hours thereafter. Chain may loosen slightly after initial break-in period.

1. Remove cover bolts and cover to access chain tensioning bolt.
2. Loosen jam nut on tensioning bolt.
3. Loosen or tighten tensioning bolt as needed.

Chain should sag about 1" to 2" when measured from the bottom of the chain guide bar (see picture to right). More sag may be required in sticky soil conditions to prevent the chain from binding due to mud build-up on the sprocket and idler. Too much sag may cause the chain to run itself off of the sprocket or idler.

4. Retighten jam nut.
5. Replace cover and cover bolts.



BOLT TORQUE INFORMATION

Torque-Tension Relationships for SAE J429 Grade Bolts

Nominal Thread Size	SAE J429 Grade 2			SAE J429 Grade 5			SAE J429 Grade 8		
	Clamp Load (lbs)	Tightening Torque		Clamp Load (lbs)	Tightening Torque		Clamp Load (lbs)	Tightening Torque	
		K = .15	K = .20		K = .15	K = .20		K = .15	K = .20
Unified Coarse Thread Series									
1/4-20	1,300	49 in-lbs	65 in-lbs	2,000	75 in-lbs	100 in-lbs	2,850	107 in-lbs	143 in-lbs
5/16-18	2,150	101	134	3,350	157	210	4700	220	305
3/8-16	3,200	15 ft-lbs	20 ft-lbs	4,950	23 ft-lbs	31 ft-lbs	6,950	32.5 ft-lbs	44 ft-lbs
7/16-14	4,400	24	30	6,800	37	50	9,600	53	70
1/2-13	5,850	36.5	49	9,050	57	75	12,800	80	107
9/16-12	7,500	53	70	11,600	82	109	16,400	115	154
5/8-11	9,300	73	97	14,500	113	151	20,300	159	211
3/4-10	13,800	129	173	21,300	200	266	30,100	282	376
7/8-9	11,425	125	166	29,435	321	430	41,550	454	606
1-8	15,000	187.5	250	38,600	482.5	640	54,540	680	900
Unified Fine Thread Series									
1/4-28	1,500	55 in-lbs	75 in-lbs	2,300	85 in-lbs	115 in-lbs	3,250	120 in-lbs	163 in-lbs
5/16-24	2,400	112	150	3,700	173	230	5,200	245	325
3/8-24	3,600	17 ft-lbs	22.5 ft-lbs	5,600	26 ft-lbs	35 ft-lbs	7,900	37 ft-lbs	50 ft-lbs
7/16-20	4,900	27	36	7,550	42	55	10,700	59	78
1/2-20	6,600	41	55	10,200	64	85	14,400	90	120
9/16-18	8,400	59	79	13,000	92	122	18,300	129	172
5/8-18	10,600	83	110	16,300	128	170	23,000	180	240
3/4-16	15,400	144	193	23,800	223	298	33,600	315	420
7/8-14	12,610	138	184	32,480	355	473	45,855	500	668
1-12	16,410	205	273	42,270	528	704	59,670	745	995

Clamp load estimated as 75% of proof load for specified bolts.

Torque values for 1/4 and 5/16 inch series are in inch-pounds. All other torque values are in foot-pounds.

Torque values calculated from formula $T = KDF$

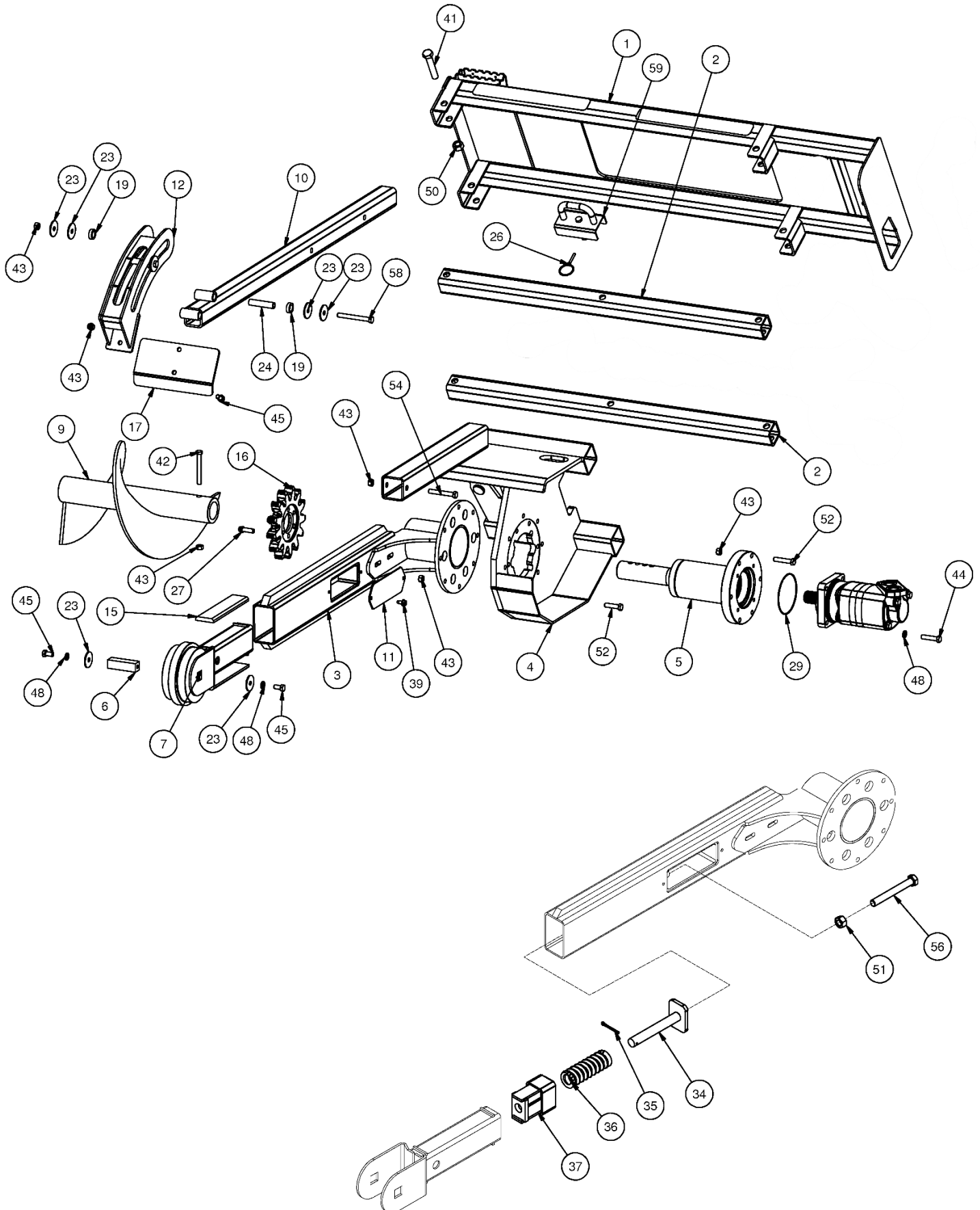
where: $K=0.15$ for "lubricated" conditions

$K=0.20$ for "dry" conditions

LOW FLOW TRENCHER PARTS INFORMATION

ITEM	QTY	PART NO.	DESCRIPTION	STOCK NO.
1	1	317200	FRAME MOUNT W/A	
2	2	317204	TUBE GUIDE PAINTED	
3	1	319814	BOOM MAIN LF TALL 3' W/A	
	1	317295	BOOM MAIN LF/HF TALL 4' W/A	
4	1	317201	FRAME DRIVE W/A	
5	1	317398	ASSY TRENCHER DRIVESHAFT LF	
6	1	317471	SHAFT IDLER WIDE	
7	1	319806	BOOM END LF 3' WIDE W/A PLASTIC	
9	1	317203	AUGER W/A	
10	1	317208	CRUMBER TUBE W/A	
11	1	317231	COVER PAINTED	
12	1	317209	CRUMBER W/A	
15	2	319805	PLASTIC SLIDER .5 x 2.5 x 10	
16	1	317230	SPROCKET TRENCHER HF 2.00 X 13T	
17	1	317264	PLATE CRUMBER 6 PAINTED	
	1	317266	PLATE CRUMBER 8 PAINTED	
19	4	317272	BUSHING 1.25 X .81 X .38 Z	
23	10	317287	WASHER PLATE .53 X 2 X .125 Z	
24	2	317273	BUSHING .75 X .53 X 3.38 Z	
26	1	315308	LYNCH PIN 1/4"	
27	6	22876	BOLT 12 PT FLANGE	1/2 X 1-1/2 NC GR9
29	1	317301	O-RING 5 X 3/32 (-159)	
34	1	317488	SHAFT SPRING W/A	
35	1	65127	PIN COTTER 3/16 X 2	
36	1	317486	SPRING COMP 2 OD X 6	
37	1	317485	MOUNT SPRING GUIDE W/A	
39	2	32467	BOLT FLG THRD RLNG	3/8 X 3/4 - UNC - GR 5
41	4	13369	BOLT HEX	3/4 X 4 - UNC - GR 5
42	1	13219	BOLT HEX	1/2 X 4 - UNC - GR 5
43	20	37214	NUT REV LOCK	1/2 - UNC - GR 5
44	4	13212	BOLT HEX	1/2 X 2-1/4 UNC GR 5
45	4	13205	BOLT HEX	1/2 X 1 - UNC - GR 5
48	6	33626	WASHER LOCK	1/2 - GR 5
50	4	37217	NUT REV LOCK	3/4 - UNC - GR 5
51	1	36116	NUT HEX FULL	3/4 - UNC - GR 5
52	8	13211	BOLT HEX	1/2 X 2 - UNC - GR 5
54	1	13217	BOLT HEX	1/2 X 3.5 - UNC - GR 5
56	1	317234	BOLT HEX TAP	3/4 X 6
57	6	13213	BOLT HEX	1/2 X 2-1/2 UNC GR 5
58	2	13221	BOLT HEX	1/2 X 4-1/2 - UNC - GR 5
59	1	317280	PIN SIDE SHIFT W/A	

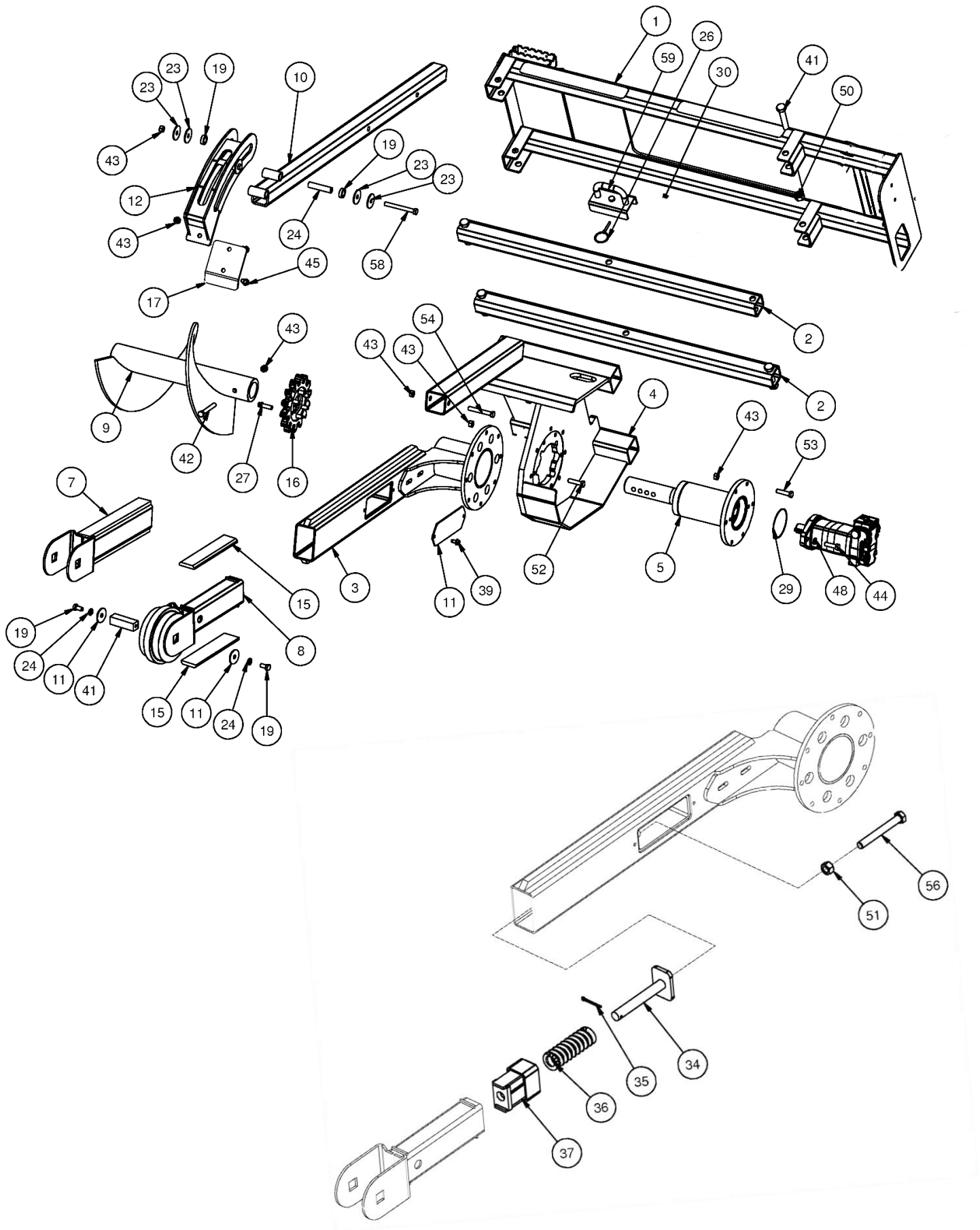
LOW FLOW TRENCHER PARTS INFORMATION



HIGH FLOW TRENCHER PARTS INFORMATION

ITEM	QTY	PART NO.	DESCRIPTION	STOCK NO.
1	1	317200	FRAME MOUNT W/A	
2	2	317204	TUBE GUIDE PAINTED	(317213 UNPAINTED)
3	1	317295	BOOM MAIN HF W/A	
4	1	317201	FRAME DRIVE W/A	
5	1	317399	ASSY TRENCHER DRIVESHAFT HF	
6	1	317471	SHAFT IDLER WIDE	
8	1	319806	BOOM END LF 3' WIDE W/A PLASTIC	
9	1	317203	AUGER W/A	
10	1	317208	CRUMBER TUBE W/A	
11	1	317231	COVER PAINTED	
12	1	317209	CRUMBER W/A	
13	2	317220	BEARING 1-1/8" SQ BORE	
14	1	317470	IDLER TRENCHER WIDE HF	
15	2	319805	PLASTIC SLIDER .5 X 2.5 X 10	
16	1	317230	SPROCKET 2.00 X 13 TOOTH	
17	1	317264	PLATE CRUMBER 6 PAINTED	
	1	317266	PLATE CRUMBER 8 PAINTED	
18	2	317298	SPACER IDLER PAINTED	
19	4	317272	BUSHING COLLAR	
23	10	317287	WASHER FENDER 1/2"	
24	2	317273	BUSHING INNER	
25	2	317286	RING SNAP INT 3.149 X .109	
26	1	315308	LYNCH PIN 1/4"	
27	6	22876	BOLT 12 PT FLANGE 1/2 X 1-1/2 NC	
29	1	317301	O-RING 5" ID X 3/32 (-159)	
34	1	317488	SHAFT SPRING W/A	
35	1	65127	PIN COTTER 3/16 X 2	
36	1	317486	SPRING COMP 2 OD X 6	
37	1	317485	MOUNT SPRING GUIDE W/A	
39	2	32467	BOLT FLG THRD RLNG	3/8 X 3/4 - UNC - GR 5
41	4	13369	BOLT HEX	3/4 X 4 - UNC - GR 5
42	1	13219	BOLT HEX	1/2 X 4 - UNC - GR 5
43	20	37214	NUT REV LOCK	1/2 - UNC - GR 5
44	4	13212	BOLT HEX	1/2 X 2-1/4 - UNC - GR 5
45	4	13205	BOLT HEX	1/2 X 1 - UNC - GR 5
48	6	33626	WASHER LOCK	1/2 - GR 5
50	5	37217	NUT REV LOCK	3/4 - UNC - GR 5
51	1	36116	NUT HEX FULL	3/4 - UNC - GR 5
52	8	13211	BOLT HEX	1/2 X 2 - UNC - GR 5
53	6	13213	BOLT HEX	1/2 X 2-1/2 - UNC - GR 5
54	1	13217	BOLT HEX	1/2 X 3.5 - UNC - GR 5
56	1	317234	BOLT HEX TAP	3/4 X 6
58	2	13221	BOLT HEX	1/2 X 4-1/2 - UNC - GR 5
59	1	317280	PIN SIDE SHIFT W/A	

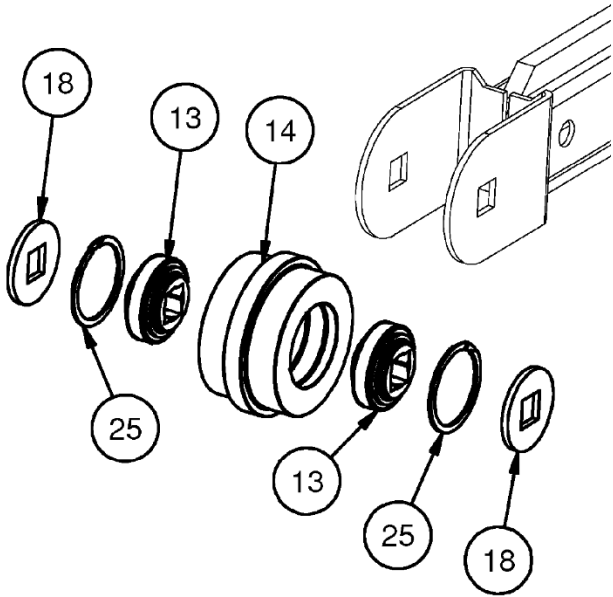
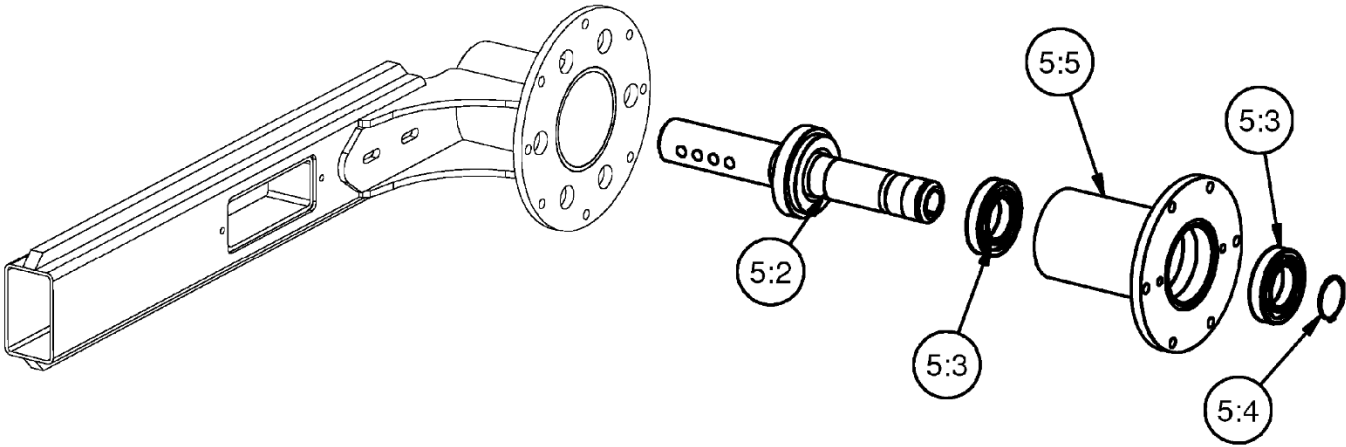
HIGH FLOW TRENCHER PARTS INFORMATION



HIGH AND LOW FLOW TRENCHER PARTS INFORMATION

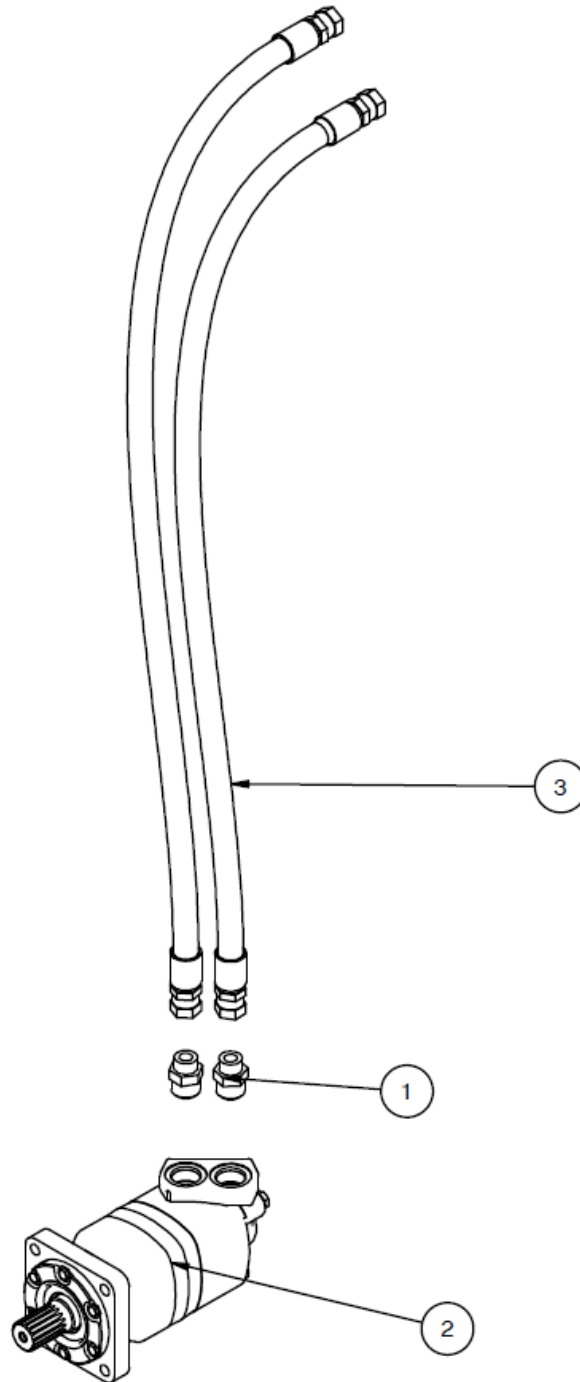
ITEM	QTY	PART NO.	DESCRIPTION	STOCK NO.
5	1	317399	ASSY TRENCHER DRIVESHAFT HF	
5:2	1	317218	SHAFT DRIVE HF W/A	
5:3	2	317289	BEARING	
5:4	1	317285	RING SNAP EXT 2-5/32 X .078	
5:5	1	317296	HOUSING BEARING HF W/A	
13	2	317220	BEARING 1-1/8" SQ BORE	
14	1	317470	IDLER TRENCHER WIDE HF	
18	2	317298	SPACER IDLER PAINTED	
25	2	317286	RING SNAP INT 3.149 X .109	

HIGH AND LOW FLOW TRENCHER PARTS INFORMATION



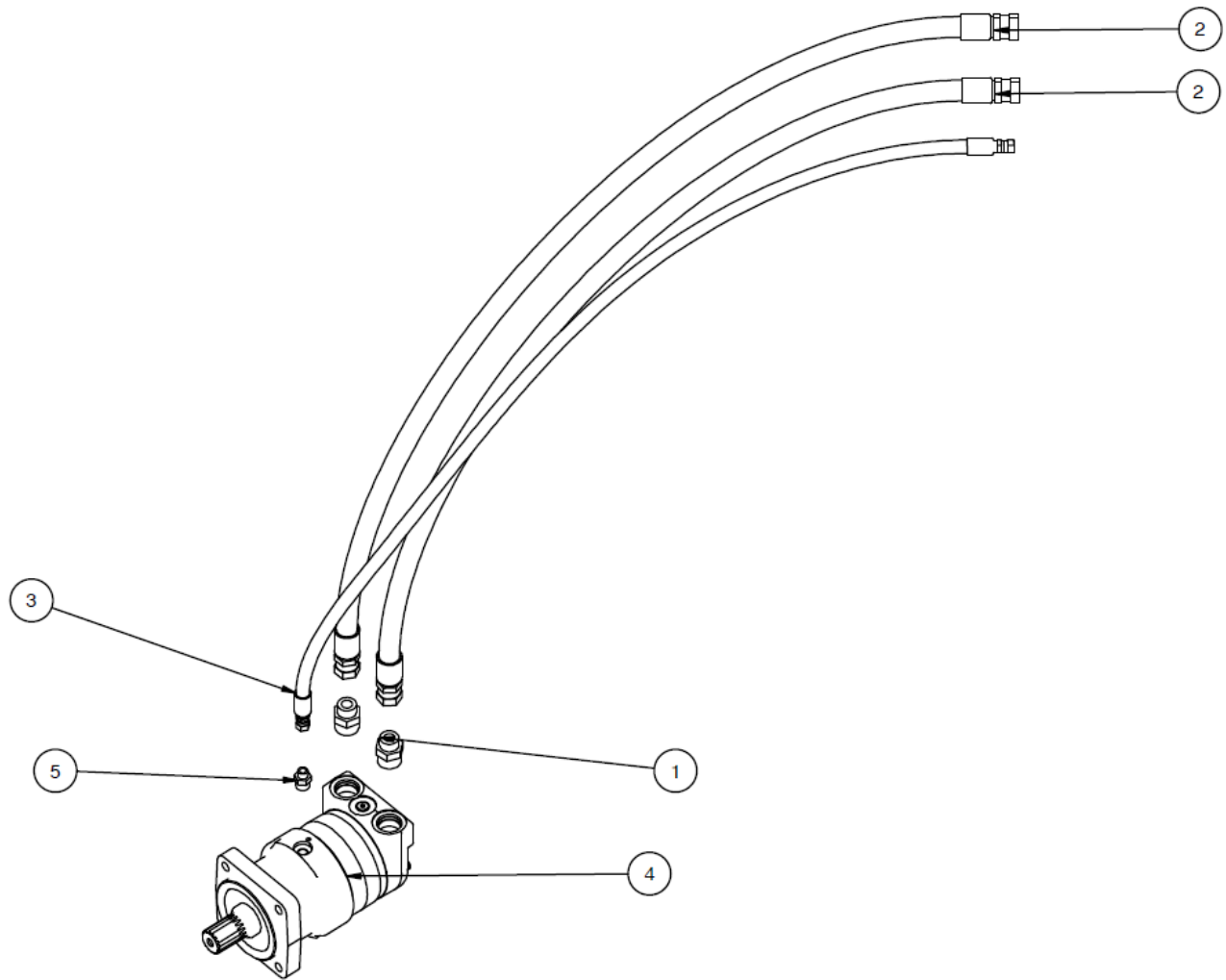
LOW FLOW TRENCHER PARTS INFORMATION

ITEM	QTY	PART NO.	DESCRIPTION	STOCK NO.
2	2	201527	ADPT STR 16MB-12MJ	
1	1	2-300-019	6000 SERIES MOTOR, 1-1/2" 17T SHAFT	
2	1	10-000-203	HOSE 3/4" x 104" 12FJX-12FJX	



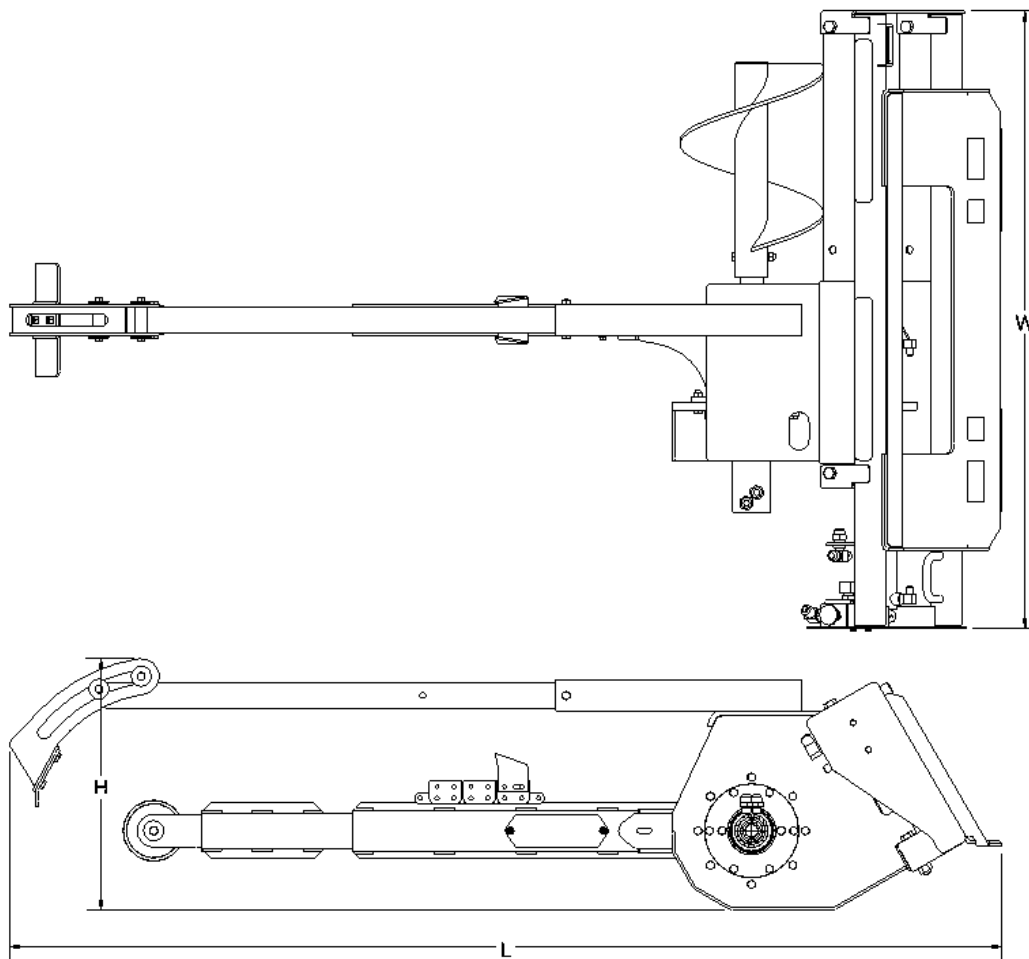
HIGH FLOW TRENCHER PARTS INFORMATION

ITEM	QTY	PART NO.	DESCRIPTION	STOCK NO.
1	2	201527	ADPT STR 16MB-12MJ	
2	2	10-000-203	HOSE 3/4" X 104" 12-12FJX	
3	1	10-000-258	HOSE 3/8" X 104" 6FJX-6FJX	
4	1	2-300-025	MOTOR 30 J6K 1.5 17T #16 PORTS	
5	1	300558	ADPT STR 6MB-8MJ	



GENERAL SPECIFICATIONS

MODEL	36" SF	48" SF	48" HF
CHAIN PITCH	930 LBS.	1000 LBS.	1000 LBS.
CHAIN RATING	60.5"	60.5"	60.5"
RATED FLOW	24.6"	24.6"	24.6"
SIDE SHIFT	86"	98"	98"
TEETH OPTIONS	38"	50"	50"
WEIGHT	2000-3300	2000-3300	2500-3500



All dimensions are in INCHES.



LIMITED WARRANTY

Quick Attach Attachments LLC warrants each new machine manufactured by us to be free from defects in material and workmanship for a period of twenty-four (24) months from date of delivery to the original purchaser.

Our obligation under this warranty is to replace free of charge, at our factory or Direct Outlet locations, any part proven defective within the stated warranty time limit.

All parts must be returned freight prepaid and adequately packaged to prevent damage in transit.

This warranty does not cover:

1. New products which have been operated in excess of rated capacities or negligence
2. Misuse, abuse, accidents or damage due to improperly routed hoses
3. Machines which have been altered, modified or repaired in any manner not authorized by our company
4. Previously owned equipment
5. Any ground engaging tools in which natural wear is involved, i.e. tooth tips, cutting teeth, etc
6. Normal maintenance
7. Fork tines
8. Hydraulic motors that have been disassembled in any manner

In no event will the Sales Representative, Direct Outlet, Quick Attach Attachments LLC, or any other company affiliated with it or them be liable for incidental or consequential damages or injuries, including but not limited to the loss of profit, rental or substitute equipment or other commercial loss. Purchaser's sole and exclusive remedy being as provided here in above.

Quick Attach Attachments LLC must receive immediate notification of defect and no allowance will be made for repairs without our consent or approval.

This warranty is in lieu of all other warranties, express or implied by law or otherwise, and there is no warranty of merchantability or fitness purpose.

No agent, employee, or representative of Quick Attach Attachments LLC has any authority to bind Quick Attach Attachments LLC to any warranty except as specifically set forth herein. Any of these limitations excluded by local law shall be deemed deleted from this warranty; all other terms apply.

This warranty may not be enlarged or modified in any manner except in writing signed by an executive officer of Quick Attach Attachments LLC to improve its products whenever it is possible and practical to do so. Quick Attach Attachments LLC reserves the right to make changes and or add improvements at any time without incurring any obligation to make such changes or add such improvements to products previously sold.

Quick Attach Attachments LLC
P.O. Box 128 Alexandria, MN 56308
Phone (320) 759-1551 Fax (320) 759-1590



P/N 317405
Quick Attach Attachments LLC

Date Printed: 6/2/2025
Printed in U.S.A.