



Quick Snow-Away RM™

Models 965RM - 1085RM

Rear Mounted – CAT II or III

3-Point Snowblowers

**Operation
& Maintenance Manual**



Read this Manual Before Use

TABLE OF CONTENTS

| | |
|------------------------------|-------|
| SAFETY | 3-4 |
| SERIAL NUMBER/DECAL LOCATION | 5-6 |
| SET-UP ASSEMBLY | 7-11 |
| MOUNTING INSTRUCTIONS | 12 |
| OPERATING INSTRUCTIONS | 13-14 |
| ROUTINE MAINTENANCE | 15-20 |
| BOLT TORQUE INFORMATION | 21 |
| PARTS INFORMATION | 22-29 |
| GENERAL SPECIFICATIONS | 30 |
| WARRANTY | 31 |

REFERENCE INFORMATION

Write the serial number for your attachment in the spaces below. Always refer to this serial number when calling for service or parts.

Serial Number.....

YOUR ATTACHMENTS DEALER

ADDRESS:

PHONE:

CONTACT:

NOTE: Quick Attach Attachments LLC reserves the right to make improvements in design or changes in specifications at any time without notice and without incurring any obligations to install them on units previously sold.

SAFETY

DO NOT use or perform maintenance on this machine until this manual has been read and understood. In addition, read the Operation and Maintenance Manual(s) pertaining to the attachment and the attachment carrier (“Tractor”).

The user is responsible for inspecting the machine daily, and for having parts repaired or replaced when continued use of the machine would cause damage, excessive wear to other parts or make the machine unsafe for continued operation.

If an operating procedure, tool device, maintenance or work method not specifically recommended is used, you must satisfy yourself that it is safe for you and others. You must also ensure that the attachment will not be damaged or made unsafe by the procedures you choose.

Quick Attach Attachments LLC cannot anticipate every possible circumstance that might involve potential hazard. The safety messages found in this manual and on the machine are therefore not all inclusive.

Throughout this manual, reference may be made to the left hand (LH) or right hand (RH) side. These terms are used as viewed from the operator’s seat facing front.

The signal words **CAUTION**, **WARNING**, or **DANGER** are used to indicate hazards.

⚠ CAUTION Indicates a potentially hazardous situation which, if not avoided, may result in minor or moderate injury.

⚠ WARNING Indicates a potentially hazardous situation which, if not avoided, could result in death or serious injury.

⚠ DANGER Indicates a potentially hazardous situation which, if not avoided, will result in death or serious injury.

The word **IMPORTANT** is used in the text when immediate damage will occur due to improper technique or operation.

The word **NOTE** is used to convey information that is out of context with the manual text; special information such as specifications, techniques, reference information, and other information of a supplementary nature.

SAFETY

Improper operation can cause serious injury or death.

Pre-operation

- This attachment is designed for blowing snow only. **NEVER** use this attachment for any other purpose.
- Read the operator's manual for the "Tractor". **NEVER** allow untrained people to operate.
- Operating instructions must be given to everyone before operating this attachment and at least once a year thereafter in accordance with OSHA regulations.
- **NEVER** exceed the maximum recommended input power or speed specifications for the attachment. Over-powering or over-speeding the attachment may cause personal injury and/or machine damage.
- Keep all shields, guards, and covers in place.
- Do not modify equipment or add attachments that are not approved by Quick Attach Attachments LLC.
- Use adequate safety warning lights and devices as required by local regulations. Obey all local laws and regulations regarding machine operation on public property.

Operation

- Avoid loose fitting clothing. Clothing or hair caught in moving parts may lead to serious injury or death.
- Hydraulic connections may be hot after use. Use gloves if connecting or disconnecting after use.
- To protect the operator from hearing loss, ear protection is required unless the tractor is equipped with a noise reduction cab that meets OSHA 1910.95 standard.
- Always wear eye protection that meets z87.1 or use with an enclosure that provides similar protection.
- Check and be sure all operating controls are in neutral before starting the engine.

Operation (continued)

- Keep people at least 100 feet away from the tractor, attachment, and discharge when in use. This attachment sends objects flying and has rotating parts. **NEVER** direct discharge toward people – rocks and debris can be thrown.
- **NEVER** operate near embankments or terrain that is so steep that rollover could occur.
- Always stay in the operator position when using the attachment.
- Before leaving the operator's position, disengage PTO drive, lower the snowblower to rest flat on the ground, stop engine, set park brake, and wait for all motion to stop.
- **NEVER** place hands in the discharge chute or clear debris while the engine is running.

Avoid High Pressure Fluids Hazard

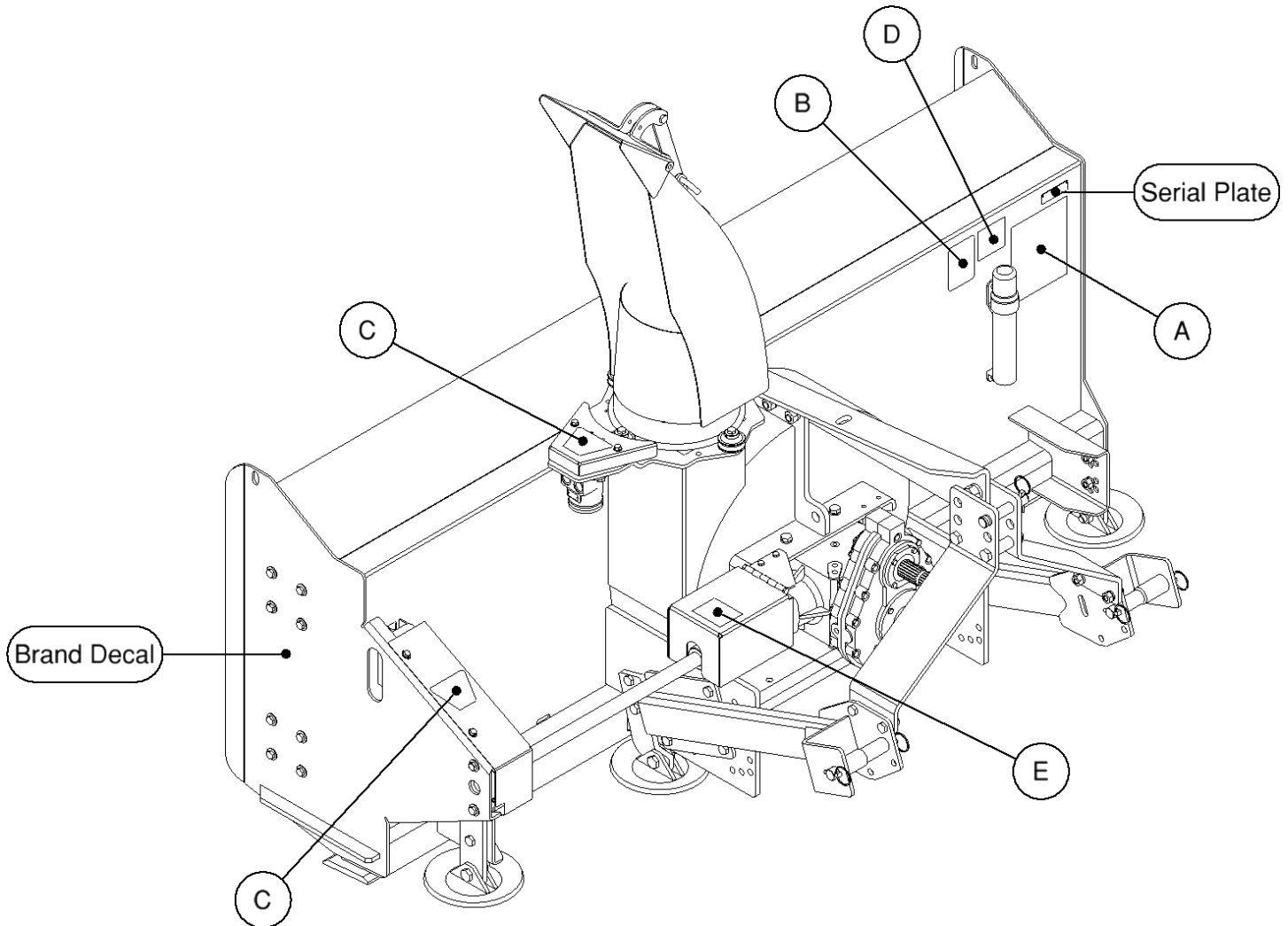


- Escaping fluid under pressure can penetrate the skin causing serious injury.
 - Avoid the hazard by relieving the pressure before disconnecting hydraulic lines.
 - Use a piece of paper or cardboard, NOT BODY PARTS, to check for suspected leaks. Wear protective gloves and safety glasses or goggles when servicing or performing maintenance on hydraulic systems.
 - If an accident occurs, see a doctor immediately. Any fluid injected into the skin must be surgically removed within a few hours or gangrene may result.
- ### Maintenance
- **NEVER** make adjustments, lubricate, clean, or perform any service on the machine while it is in operation.
 - Make sure the attachment is serviced on a daily basis. Improper maintenance can cause serious injury or death in addition to damage to the attachment and/or your equipment.

SERIAL NUMBER AND SAFETY DECAL LOCATIONS

Serial Number Location:

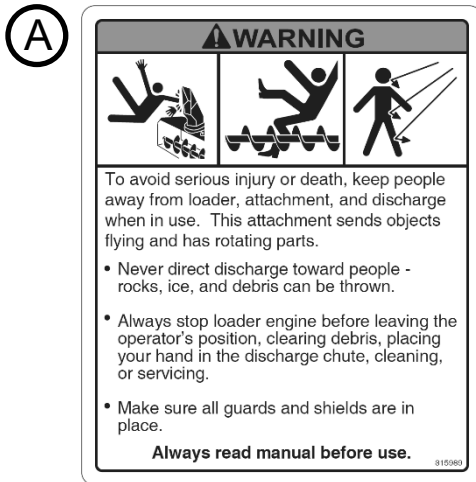
It is important to refer to the serial number of the attachment when making repairs or ordering parts. Early or later models (identification made by serial number) may use different parts, or it may be necessary to use different procedures in doing a specific operation.



SERIAL NUMBER AND SAFETY DECAL LOCATIONS

Safety Decals Locations:

The locations of the safety decals are shown. If these decals are missing, damaged, or painted over they must be replaced. Call Quick Attach Attachments LLC (320-759-1551) for replacement decals.



Part number: 310820

Location: Back right side of snowblower body

Quantity: 1



Part number: 200001

Location: Back right side of snowblower body

Quantity: 1



Part number: 103206

Location: On auger drive chain & chute rotation chain cover

Quantity: 2

(D)

| REARPULL BLOWER PART NUMBERS | | |
|--------------------------------|--------|--------|
| PUNCH HERE | PMI | MODEL |
| ▶ | 920100 | 620RP |
| ▶ | 920102 | 725RP |
| ▶ | 920104 | 825RP |
| REAR MOUNT BLOWER PART NUMBERS | | |
| ▶ | 920106 | 520RM |
| ▶ | 920107 | 620RM |
| ▶ | 920109 | 725RM |
| ▶ | 920111 | 825RM |
| ▶ | 920112 | 925RM |
| ▶ | 920113 | 965RM |
| ▶ | 920114 | 1085RM |

300794

Part number: 300794

Location: Back right side of snowblower body

Quantity: 1



Part number: 201415

Location: Top of gear drive cover

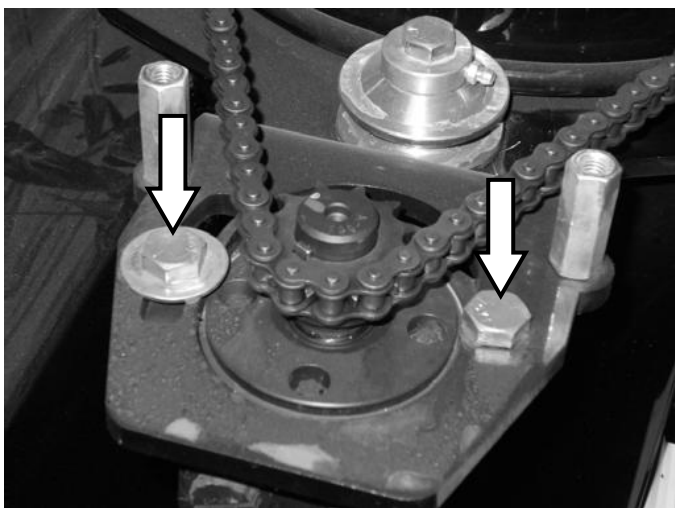
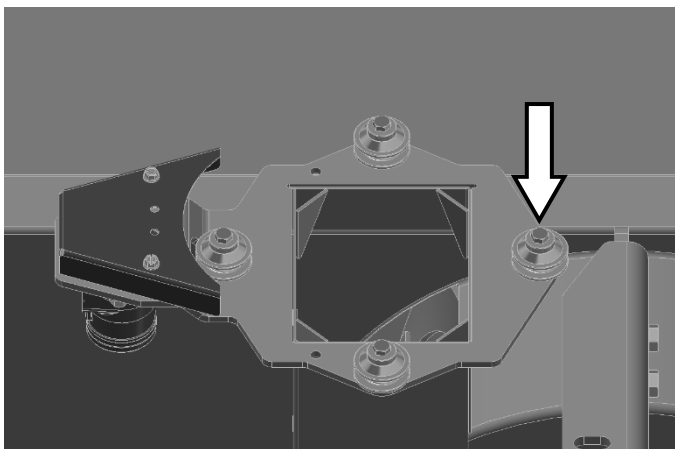
Quantity: 1

Small Brand Decal

Location: On each side of snowblower body

Quantity: 2

SET-UP ASSEMBLY



Discharge Chute Installation

1. Remove the roller guide opposite the rotation motor from the blower housing by removing the bolt securing the roller guide to the snowblower.
2. Remove the chain cover from the blower housing by removing the two bolts securing the cover to the snowblower.
3. After unpacking the chute, slip the chute into the grooves on the three remaining chute guides.
4. Reinstall the roller guide and bushing with bolt, lock washer, and lock nut.

IMPORTANT: Torque each roller guide lock nut to 75 ft.-lbs.

5. Rotate the chute to the straightforward position.
6. Loosen the motor mount bolts, and push the motor all the way toward the chute.
7. Install the No. 40 roller chain around the motor sprocket.
8. Pull the motor away from the chute until all slack is removed from the roller chain, and tighten the motor mount bolts to secure the motor in place.

IMPORTANT: Do not overtighten roller chains. Tighten only enough to remove slack.

9. Reinstall the chain cover and two bolts.

⚠ WARNING

Do not operate the snowblower without the chain shield in place. Moving parts may cause injury or death. Always replace guard after servicing.

SET-UP ASSEMBLY

Cylinder and Hose Installation

The chute rotator hydraulic hoses (and optional chute deflector hoses, if equipped) are shipped preassembled from the factory. If the hoses are disconnected for any reason, make sure that the restrictor fitting is kept in the hydraulic orbit motor.

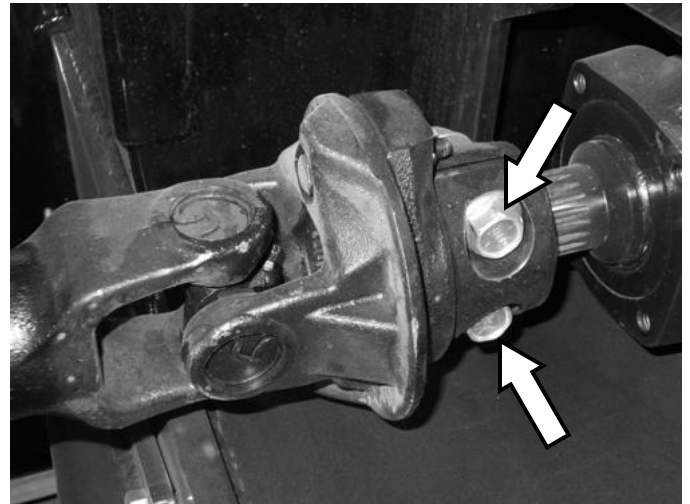
IMPORTANT: Properly route the hoses to prevent them from being damaged when the snow blower is raised and lowered. After installation, carefully raise and lower the snowblower through the full range of motion to check for interference.

IMPORTANT: Install the hydraulic chute deflection hoses in such a way to allow the plenty of slack for the chute to rotate fully in both directions.

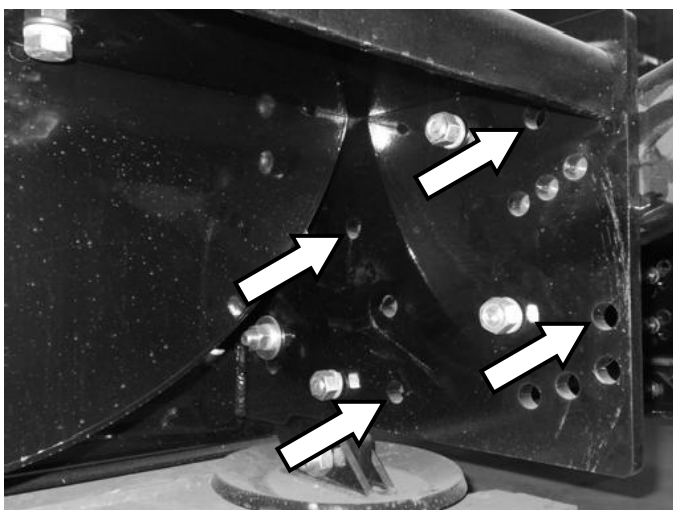
Driveline Installation

1. Slide the splined yoke of the driveline onto the snowblower gearbox shaft.
2. Install and tighten the 5/8" x 3-1/2" grade 8 bolts and lock nuts.

⚠ WARNING Be sure the plastic driveline shield is installed and operating properly. Never operate the snowblower with missing driveline shields.



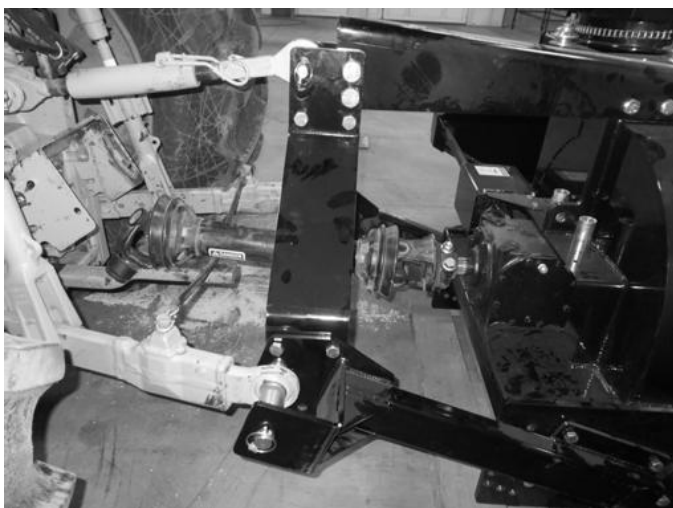
SET-UP ASSEMBLY



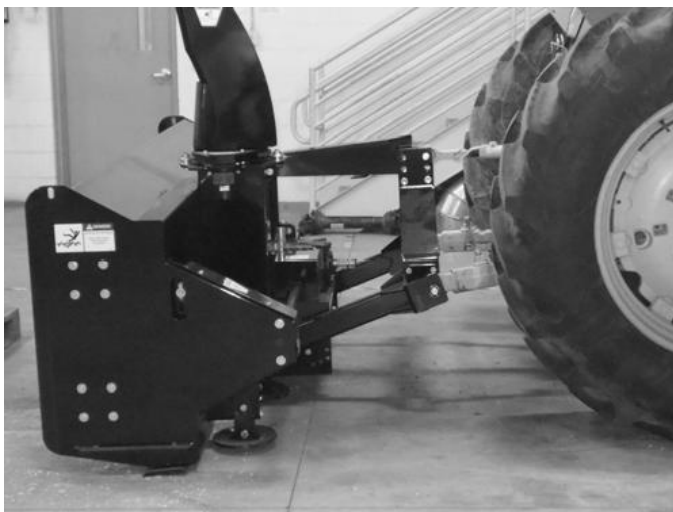
Mounting and Adjusting the Snowblower

1. The snowblower mounting arms are designed to be mounted on standard Category II and narrow Category III 3-point hitch systems. They are also quick hitch compatible. The arms are set at the factory in the innermost position, which should work for most 3-point quick hitch systems. If your tractor does not have a 3-point quick hitch, it may be necessary to use the second set of bolt holes called out in the picture to the left.

NOTE: The positioning of the snowblower arms allows use of the same driveline in both applications. Determine and set the arms to the correct position.



2. Mount the snowblower to the tractor using the "Mounting Instructions" on page 12 of this manual.



3. The driveline angle should not exceed 20°, or the driveline U-joints may exhibit shortened lifespans. The driveline angle depends on the tractor PTO location relative to the ground. If the driveline angle exceeds 20°, tilt the snowblower away from the tractor by lengthening the tractor's 3-point top link (refer to tractor's operator's manual for top link adjustment instructions).

IMPORTANT: Operating the snowblower with excessive driveline angle can cause premature U-joint failure and is not covered under warranty.

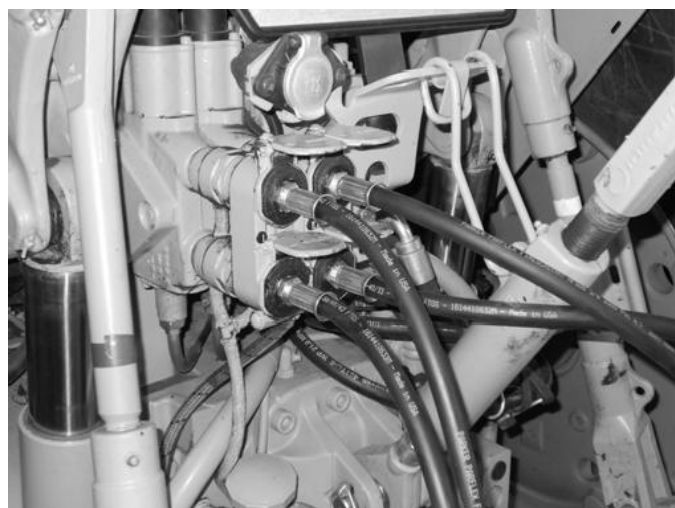
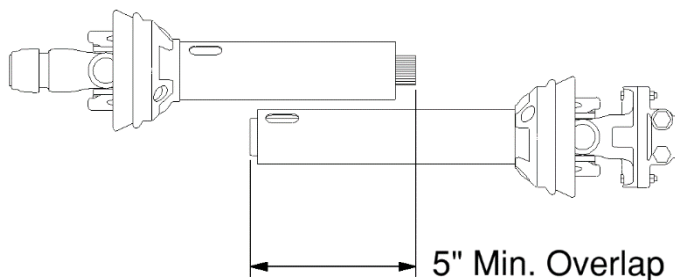
SET-UP ASSEMBLY

4. After the snowblower tilt is determined and set, the driveline telescoping length must be checked.
5. With the snowblower resting on the ground, connect the driveline to the tractor PTO shaft and mark the location of the overlap on the driveline. Also check that there is sufficient clearance between the driveline and the tractor drawbar. If there is not sufficient clearance, refer to the tractor's operator's manual for instructions on shortening or removing the drawbar.
6. Disconnect the driveline from the PTO shaft and slide the two driveline halves apart. Using the mark on the shield as a reference, check to be sure there is at least 5" of overlap between the two halves. If there is less than 5" of overlap, contact Quick Attach Attachments LLC.
7. Start the tractor, and slowly raise the 3-point arms, checking to be sure that the driveline does not bottom out before reaching the highest position or at a position below ground level.

IMPORTANT: Severe damage to the tractor may occur if the driveline bottoms out while raising the snowblower. If the driveline bottoms out, it may need to be shortened.

8. Connect the chute rotator hoses (and chute deflector hoses, if equipped) to the tractor's remote hydraulic couplers (refer to the tractor's operator's manual for remote hydraulic coupler locations and connection instructions). Make sure the hoses are routed so that they will not catch on any part of the tractor or snowblower or contact any moving parts during operation. Check hose routing through the full range of intended motion before operating the snowblower.

IMPORTANT: Hose routing is the responsibility of the owner and/or operator. Pinched or stretched hoses are not covered under warranty.



SET-UP ASSEMBLY

9. With the operator in the seat of the tractor and the seat belt fastened, start the engine. With the engine at an idle, check that the hydraulic functions are working properly by rotating the chute all the way in both directions and angling the chute deflector all the way up and down (if hydraulic chute deflection kit is equipped).
10. With the engine at an idle, engage the tractor PTO drive to start the snowblower turning. Slowly increase the engine speed to working RPM. If there is any excessive vibration or noise while running the snowblower, throttle the engine down to an idle, disengage the PTO drive, shut down the engine, engage the park brake, and wait for all motion to stop, then exit the tractor and inspect the snowblower for the cause of the vibration or noise. Adjust or replace parts as needed.

IMPORTANT: Do not engage or disengage the PTO drive at full throttle.

11. Set-up assembly is now complete, and the snowblower is ready for operation. See the “Mounting Instructions” and “Operating Instructions” sections of this manual for proper mounting and operating techniques.

MOUNTING INSTRUCTIONS

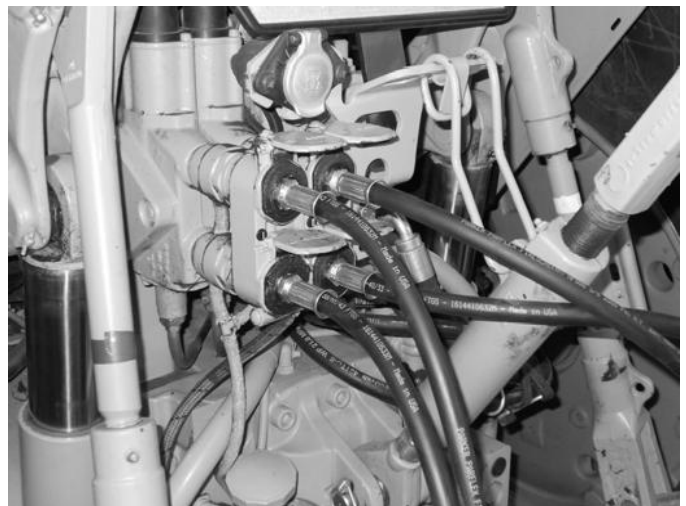
After the initial set-up is complete, use the following instructions to mount the snowblower to the tractor.

1. With the operator in the seat of the tractor and the seat belt fastened, back the tractor up to the snowblower, aligning the 3-point arms with the snowblower arms. Apply the park brake and shut down the engine.
2. Install the upper and lower pins and secure in place with lynch pins.
3. Connect the driveline to the tractor PTO. Be sure the retaining collar snaps into position on the PTO shaft.

⚠ WARNING All appropriate hitch pins and PTO driveline must be locked into place. Failure to secure PTO shaft or pins can allow the attachment to disconnect from the tractor and cause injury or death.

⚠ WARNING The tractor must be equipped with a working PTO shield. To avoid serious injury or death, never adjust or move the driveline when connected to the tractor and the tractor's PTO drive is engaged.

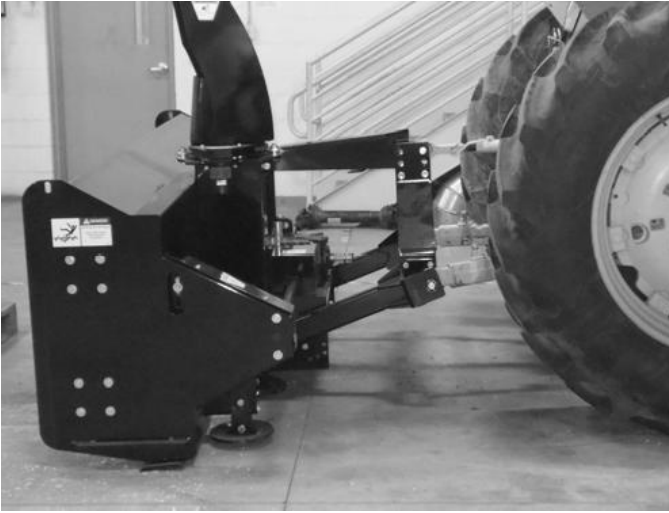
IMPORTANT: Maximum driveline extension is 17". Extending beyond 17" can allow the driveline to separate and cause equipment damage. Also be sure that the driveline does not bottom out when the snowblower is fully raised or lowered. There must be at least 5" of shaft overlap for safe operation.



4. Connect the chute rotator hoses (and chute deflector hoses, if equipped) to the tractor's remote hydraulic couplers.
5. Mounting is now complete, and the snowblower is ready for operation. Use the reverse order of these instructions to dismount the snowblower from the tractor.

OPERATING INSTRUCTIONS

⚠ WARNING Know your work area. Avoid obstructions and debris.



1. Before starting the tractor engine, check that the snowblower is either level or tilted slightly away from the tractor. This creates a straighter driveline angle, and can be accomplished by lengthening the tractor's 3-point top link (refer to tractor's operator's manual for top link adjustment instructions).

IMPORTANT: Keep the driveline angle as straight as possible while the snowblower is under load. This will maximize the life of the driveline U-joints.

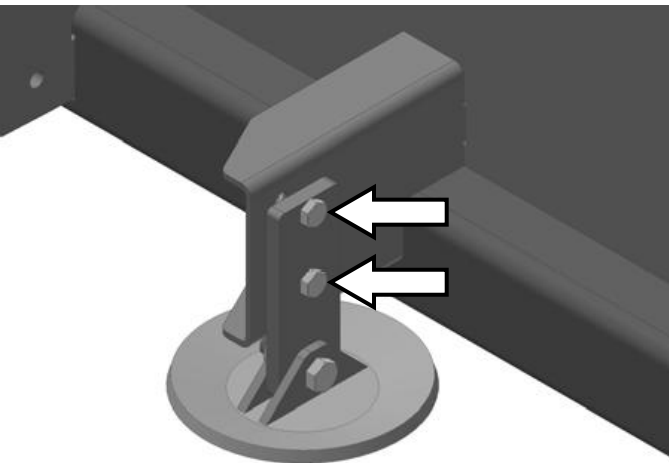
NOTE: The snowblower can be tilted in varying degrees depending on the tractor size and PTO shaft location.



2. Adjust the chute deflector to control snow discharge angle and distance. To adjust: remove the pin from the bottom of the deflector link, move the deflector to the desired angle, and reinstall the pin through the chute and deflector link.

NOTE: If the snowblower is equipped with hydraulic chute deflection, the tractor remote hydraulic control lever is used to adjust the deflection angle.

NOTE: Snowblower will achieve maximum casting distance with the deflector in the highest position (as shown).



3. Skid shoes are used to control the cutting height. To adjust the skid shoe height: raise the snowblower off of the ground and block it in position, remove the skid shoe retaining bolts, adjust the skid shoes up or down to the desired cutting height, and reinstall the retaining bolts. The center skid shoes have retaining bolts that slide up and down in slotted holes. To adjust: loosen the retaining bolts, slide the skid shoes to the desired height, and retighten the retaining bolts. Make sure all four skid shoes are set to the same height.

⚠ WARNING To avoid being crushed, never work on raised attachment without using additional support blocks or jack stands.

OPERATING INSTRUCTIONS

4. With the operator in the operator's position, check to be sure all operating controls are in neutral and start the engine.

⚠ WARNING Keep people at least 100 feet away from tractor, snowblower, and discharge when in use. This attachment sends objects flying and has rotating parts. Never direct discharge toward people – rocks and debris can be thrown.

5. With the engine idling, check the hydraulic remote functions for the snowblower discharge chute rotator and discharge chute deflector (if optional hydraulic deflection kit is equipped).
6. Rotate the chute toward a clear area.
7. Lower the snowblower to rest on the skid shoes.
8. With the engine at an **idle**, engage the tractor PTO drive (see tractor's operator's manual).

IMPORTANT: Do not engage or disengage the PTO drive at full throttle.

IMPORTANT: Take special care if using an imported tractor. Some tractors have multi-speed PTO systems. The snowblower must be operated with a PTO speed of 1000 rpm. Never exceed the factory recommended PTO speed for the snowblower.

9. Increase the tractor engine speed to full throttle. Always operate the snowblower with the engine at full throttle for maximum efficiency.

10. Select the lowest tractor reverse gear, and slowly drive the tractor backward into the snow. Blow snow toward a clear area. When possible, direct snow discharge downwind.

IMPORTANT: Do not operate the snowblower if excessive vibration is present. Serious damage can occur. Check auger and fan.

NOTE: The tractor reverse speed can be varied according to snow depth and density. Always operate the attachment with the loader engine at full throttle for maximum snowblower efficiency.

NOTE: If the surface to be cleared has very dense or compacted snow, the snowblower should be resting on the skid shoes during operation, with the 3-point arms fully lowered. This will allow the snowblower to float along the contour of the ground. If operating in soft snow conditions, the snowblower can be carried slightly above the ground with the 3-point arms to minimize gouging.

ROUTINE MAINTENANCE

⚠ WARNING Lower the attachment to rest flat on the ground, disengage the PTO drive, shut down the engine, relieve hydraulic pressure to the attachment, set the park brake, and wait for all motion to stop before leaving the operator's position or approaching the attachment to perform service of any kind.

It is the operator's responsibility to make daily inspections of the tractor and attachment for damage, loose bolts, fluid leaks, or anything else that could cause a potential service or safety problem. Preventive maintenance is the easiest and least expensive type of maintenance.

IMPORTANT: Bolts and set screws can loosen after initial usage. After the first hour of operation check all bolts and set screws. Continue to check for loose hardware every **10 hours** of operation.

LUBRICATION

Lubrication Legend



Multipurpose spray lube



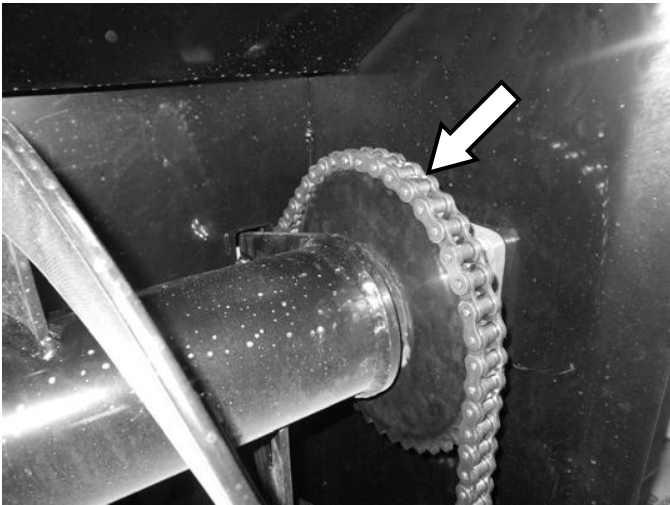
No. 2 Lithium base gun grease



Clean engine oil



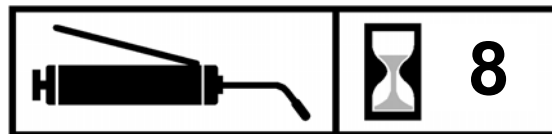
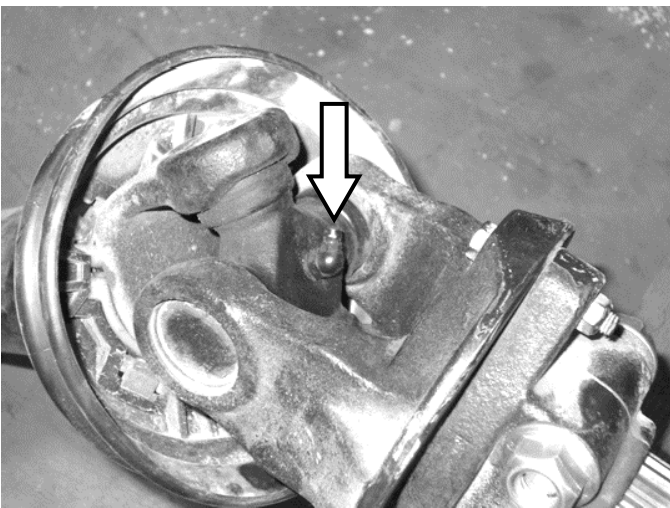
Intervals at which lubrication is required



Use No. 2 lithium base grease gun when lubricating all snowblower grease fittings.

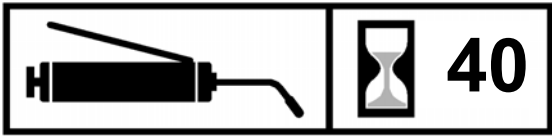


Use clean engine oil or roller chain lubricant to lubricate the auger drive chain every **8 hours** of operation.

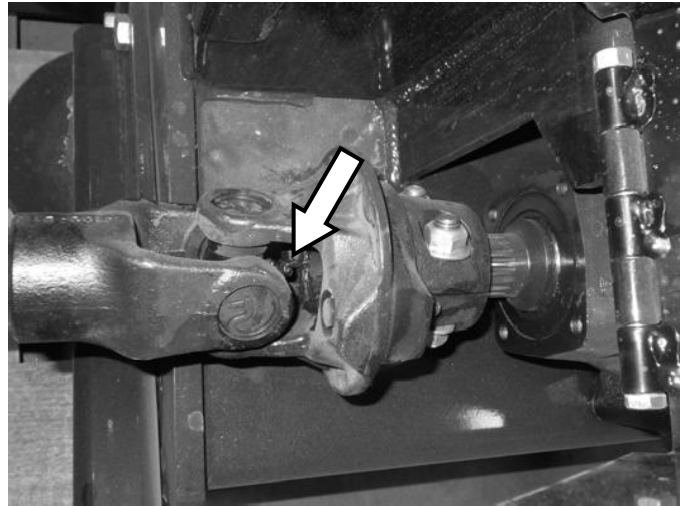


Grease the PTO driveshaft U-joints and slide joint every **8 hours** of operation.

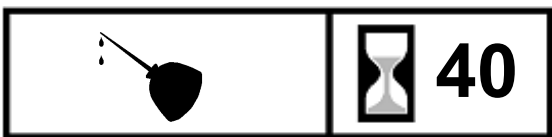
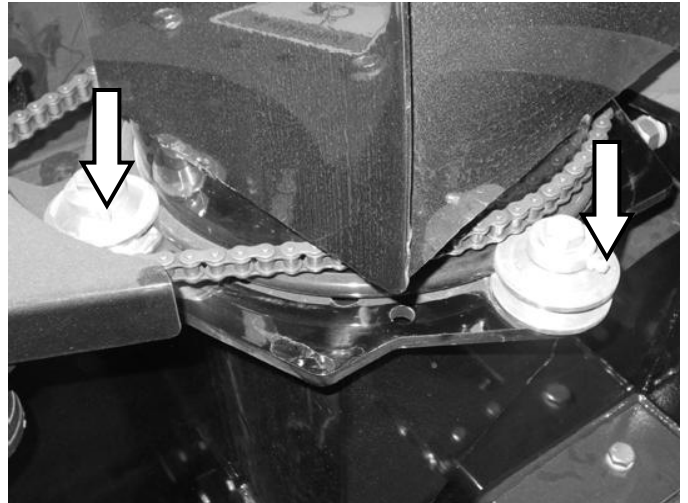
ROUTINE MAINTENANCE



Grease the auger drive shaft U-joint every **40 hours** of operation.



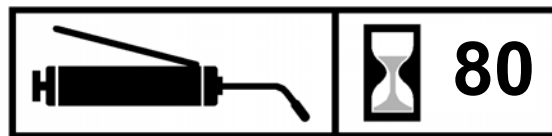
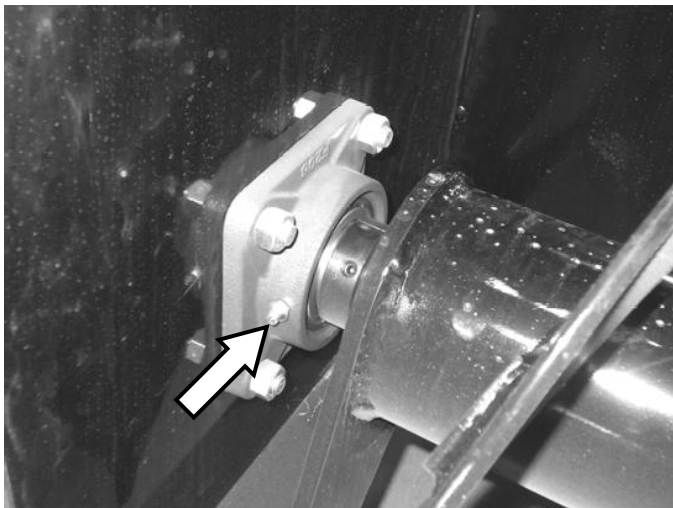
Grease each of the four roller guide zerks every **40 hours** of operation.



Use clean engine oil or roller chain lubricant to lubricate the chute rotator chain every **40 hours** of operation.

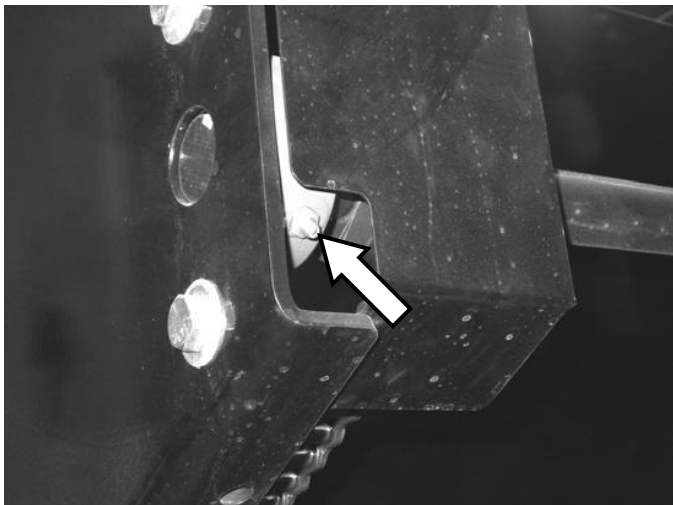


ROUTINE MAINTENANCE



Grease the bearings on each end of the augers every **80 hours** of operation.

IMPORTANT: Do not over-grease the auger bearing units. Excessive grease can cause premature failure. Only add **two pumps** of grease to each bearing at each greasing interval.



Grease the bearing on the end of the auger drive shaft every **80 hours** of operation.

IMPORTANT: Do not over-grease the drive shaft bearing unit. Excessive grease can cause premature failure. Only add **two pumps** of grease to the bearing at each greasing interval.

ROUTINE MAINTENANCE

Gearbox Fluid Check and Fill

The gearbox is a combination gearbox consisting of a parallel shaft gearbox that reduces the input speed and a right angle gearbox that drives the fan and auger. This gearbox is designed to be used with 1000 RPM input speed only.

Check the oil level in both gearboxes **weekly**.

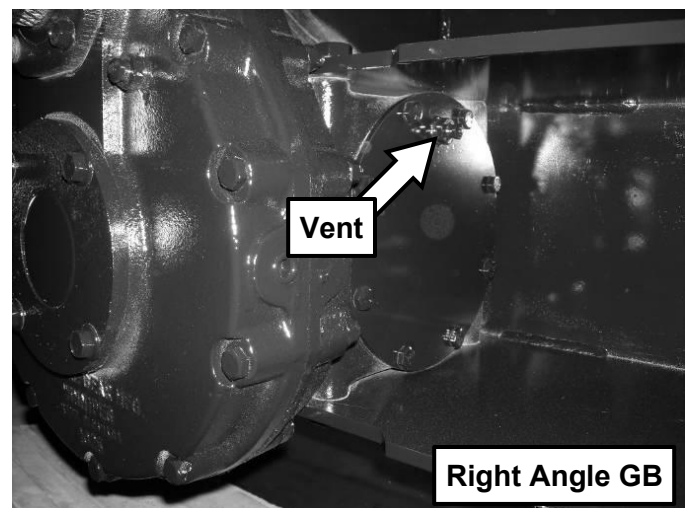
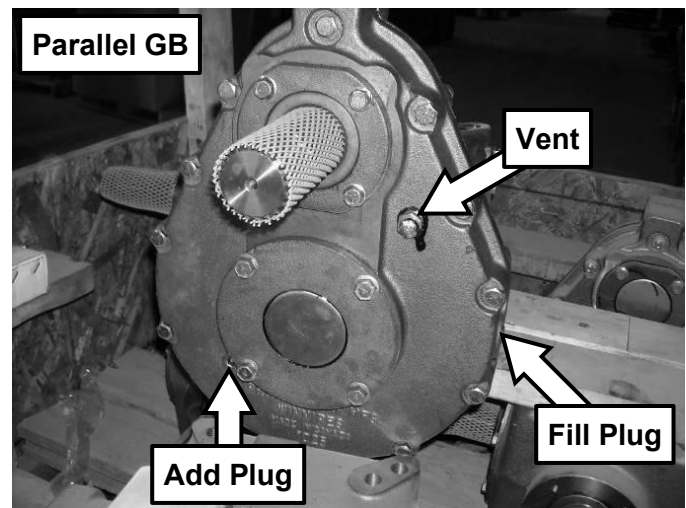
The parallel shaft gearbox should be between 1/3 and 1/2 full of 80W-90 gear lube (approximately 32-44 oz. or 1-1.4 Qt.). It is recommended to fill at least to the "Add" plug shown.

The right angle gearbox should be between 1/3 and 1/2 full of 80W-90 gear lube (approximately 64-96 oz. or 2-3 Qt.). A drain plug is located on the bottom of the gearbox, and is accessible through the mounting plate hole. Do not exceed 1/2 full (approx. 3 Qt.).

Drain and refill both gearboxes with new oil once every **3 years or 200 hours**, whichever comes first. Whenever the gearbox oil is changed, remove and clean the gearbox vent.

IMPORTANT: Do not overfill gearboxes with oil. Overfilling can lead to premature seal failure and can cause oil to leak from the vents.

IMPORTANT: Fluids such as engine oil, gear lube, and hydraulic fluid must be disposed of in an environmentally safe manner. Some regulations require that certain spills and leaks be cleaned in a specific manner. Check local, state, and federal regulations for correct disposal methods.



ROUTINE MAINTENANCE

Auger Drive Chain Adjustment

A properly tensioned auger drive chain will extend the roller chain life. To adjust the chain tension:

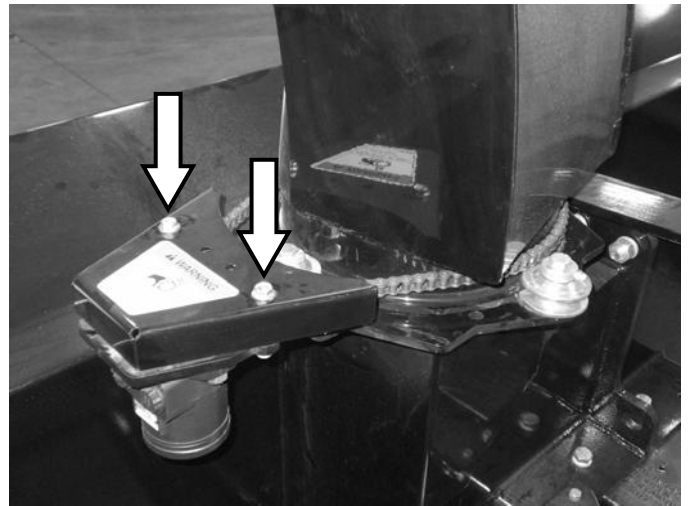
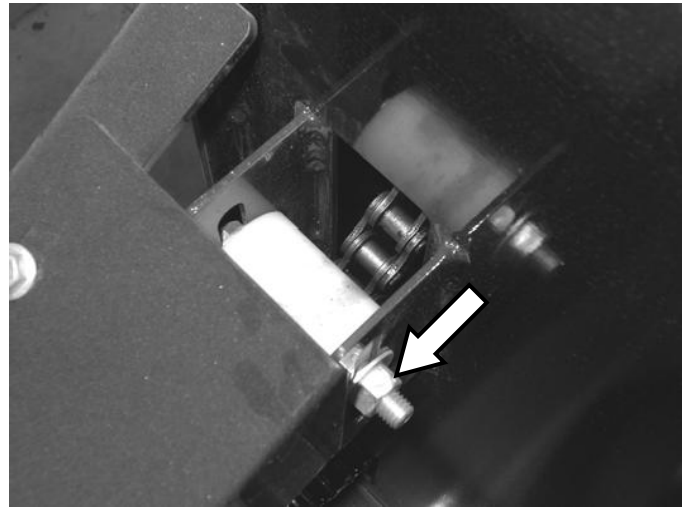
1. Loosen the locking bolt, and push the bolt down to move the tension idler down until all slack is removed from the chain.

IMPORTANT: Do not overtighten roller chains. Tighten only enough to remove slack.

2. Tighten the locking bolt to secure the tension idler in position.

NOTE: Make sure the bolt through the plastic idler is tight. The idler is not intended to rotate.

NOTE: If the plastic idler appears excessively worn, rotate it to a fresh wear side before tightening the locking bolt.



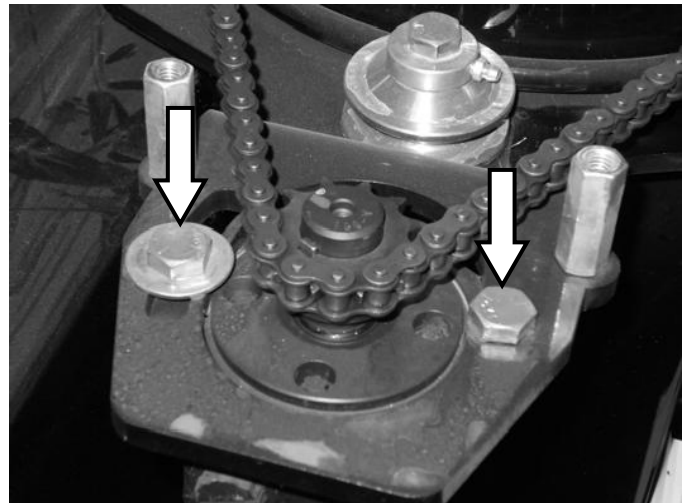
Discharge Chute Rotator Adjustment

1. Remove the two bolts securing the chain cover to the snowblower, and remove the cover.
2. Loosen both motor mount bolts. Pull the motor mount away from the chute to remove all slack from the roller chain.

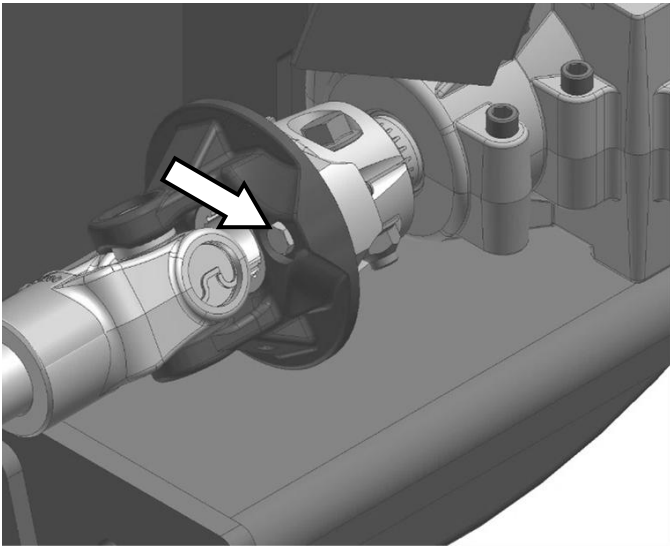
IMPORTANT: Do not overtighten roller chains. Tighten only enough to remove slack.

3. Tighten the motor mount bolts to secure the motor mount in place.
4. Reinstall the chain cover.

⚠ WARNING Do not operate the snowblower without the chain shield in place. Moving parts may cause injury or death. Always replace guard after servicing.



ROUTINE MAINTENANCE



Auger Shaft Shear Coupler

The auger drive is shear bolt protected in the event that the auger should strike a solid object. The auger driveshaft shear coupler is located on the left side of the gearbox, under the shield. If sheared, align the holes in the coupler flange and install a 5/16" x 2" NC grade 5 bolt and lock nut.

IMPORTANT: Shear bolts are intended to protect the snowblower from severe damage by shearing in the event of a solid object strike. Never use grade 8 bolts in place of shear bolts.



PTO Driveline Shear Coupler

The PTO driveline shear coupler is located on the tractor end of the driveline.

1. Align the holes in the coupler flange.
2. Install two 5/16" x 2" NC grade 5 bolts and lock nuts.

IMPORTANT: Shear bolts are intended to protect the snowblower from severe damage by shearing in the event of a solid object strike. Never use grade 8 bolts in place of shear bolts.

BOLT TORQUE INFORMATION

Torque-Tension Relationships for SAE J429 Grade Bolts

| Nominal Thread Size | SAE J429 Grade 2 | | | SAE J429 Grade 5 | | | SAE J429 Grade 8 | | |
|------------------------------|---------------------|-------------------|-------------|---------------------|-------------------|------------|---------------------|-------------------|------------|
| | Clamp Load (lbs) | Tightening Torque | | Clamp Load (lbs) | Tightening Torque | | Clamp Load (lbs) | Tightening Torque | |
| | | K = .15 | K = .20 | | K = .15 | K = .20 | | K = .15 | K = .20 |
| Unified Coarse Thread Series | | | | | | | | | |
| 1/4-20 | 1,300 | 49 in-lbs | 65 in-lbs | 2,000 | 75 in-lbs | 100 in-lbs | 2,850 | 107 in-lbs | 143 in-lbs |
| 5/16-18 | 2,150 | 101 | 134 | 3,350 | 157 | 210 | 4700 | 220 | 305 |
| 3/8-16 | 3,200 | 15 ft-lbs | 20 ft-lbs | 4,950 | 23 ft-lbs | 31 ft-lbs | 6,950 | 32.5 ft-lbs | 44 ft-lbs |
| 7/16-14 | 4,400 | 24 | 30 | 6,800 | 37 | 50 | 9,600 | 53 | 70 |
| 1/2-13 | 5,850 | 36.5 | 49 | 9,050 | 57 | 75 | 12,800 | 80 | 107 |
| 9/16-12 | 7,500 | 53 | 70 | 11,600 | 82 | 109 | 16,400 | 115 | 154 |
| 5/8-11 | 9,300 | 73 | 97 | 14,500 | 113 | 151 | 20,300 | 159 | 211 |
| 3/4-10 | 13,800 | 129 | 173 | 21,300 | 200 | 266 | 30,100 | 282 | 376 |
| 7/8-9 | 11,425 | 125 | 166 | 29,435 | 321 | 430 | 41,550 | 454 | 606 |
| 1-8 | 15,000 | 187.5 | 250 | 38,600 | 482.5 | 640 | 54,540 | 680 | 900 |
| Unified Fine Thread Series | | | | | | | | | |
| 1/4-28 | 1,500 | 55 in-lbs | 75 in-lbs | 2,300 | 85 in-lbs | 115 in-lbs | 3,250 | 120 in-lbs | 163 in-lbs |
| 5/16-24 | 2,400 | 112 | 150 | 3,700 | 173 | 230 | 5,200 | 245 | 325 |
| 3/8-24 | 3,600 | 17 ft-lbs | 22.5 ft-lbs | 5,600 | 26 ft-lbs | 35 ft-lbs | 7,900 | 37 ft-lbs | 50 ft-lbs |
| 7/16-20 | 4,900 | 27 | 36 | 7,550 | 42 | 55 | 10,700 | 59 | 78 |
| 1/2-20 | 6,600 | 41 | 55 | 10,200 | 64 | 85 | 14,400 | 90 | 120 |
| 9/16-18 | 8,400 | 59 | 79 | 13,000 | 92 | 122 | 18,300 | 129 | 172 |
| 5/8-18 | 10,600 | 83 | 110 | 16,300 | 128 | 170 | 23,000 | 180 | 240 |
| 3/4-16 | 15,400 | 144 | 193 | 23,800 | 223 | 298 | 33,600 | 315 | 420 |
| 7/8-14 | 12,610 | 138 | 184 | 32,480 | 355 | 473 | 45,855 | 500 | 668 |
| 1-12 | 16,410 | 205 | 273 | 42,270 | 528 | 704 | 59,670 | 745 | 995 |

Clamp load estimated as 75% of proof load for specified bolts.

Torque values for 1/4 and 5/16 inch series are in inch-pounds. All other torque values are in foot-pounds.

Torque values calculated from formula $T = KDF$

where: $K=0.15$ for "lubricated" conditions

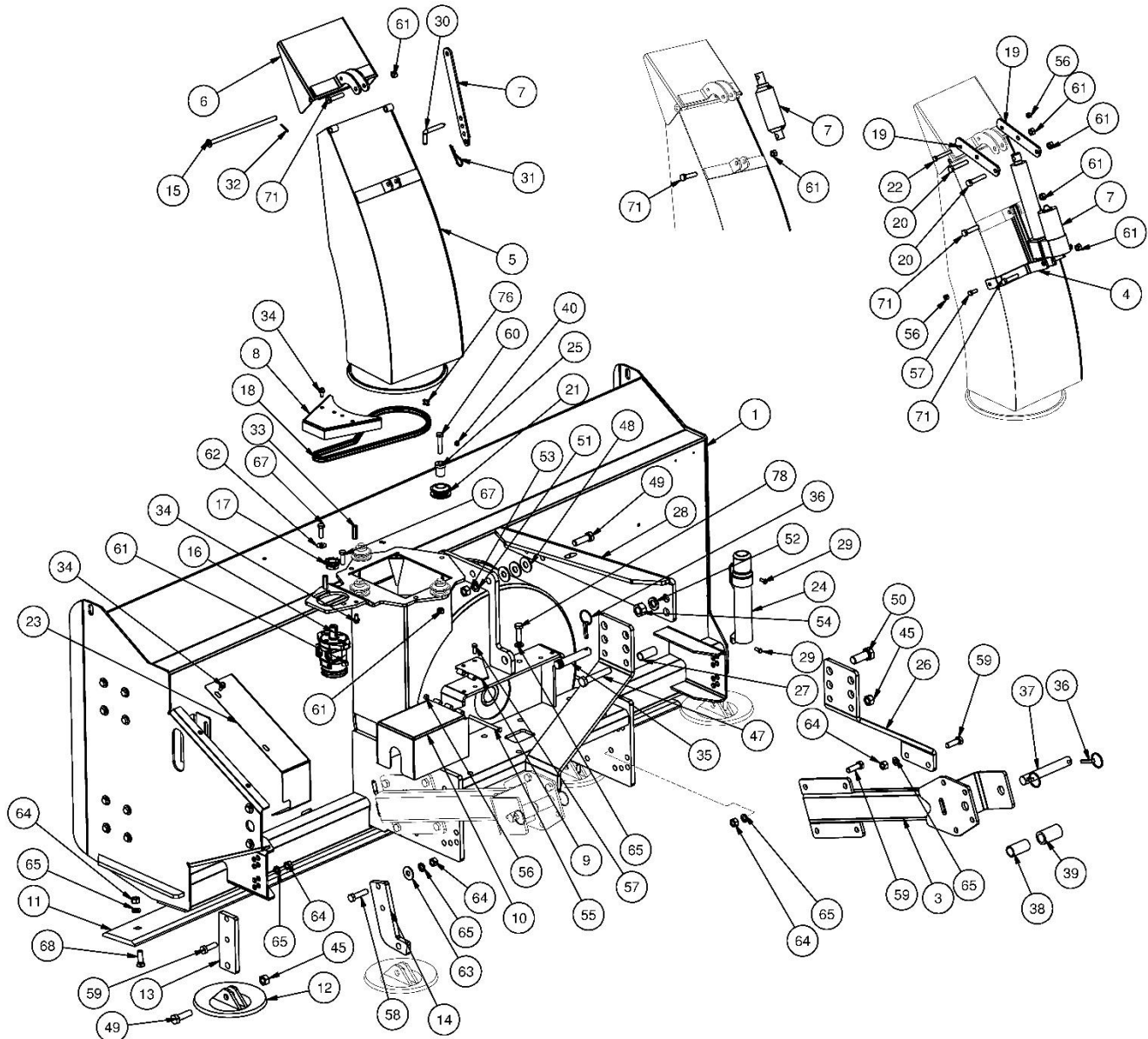
$K=0.20$ for "dry" conditions

PARTS INFORMATION

| ITEM | QTY | PART NO. | DESCRIPTION | STOCK NO. |
|------|-----|----------|------------------------------------|---------------------|
| 1 | 1 | 311900 | BODY 965 X 96 CCW W/A | |
| | 1 | 311901 | BODY 1085 X 108 CCW W/A | |
| 3 | 2 | 311904 | ARM PUSH 965RM W/A | |
| 4 | 1 | 310574 | DEFLECTOR LINKAGE BRKT W/A | ELEC. DEFLECTOR PKG |
| 5 | 1 | 310403 | CHUTE 12" FM/RM W/A | |
| 6 | 1 | 315067 | CHUTE DEFLECTOR W/A | |
| 7 | 1 | 315087 | LINKAGE DEFLECTOR PAINTED | (315154 UNPAINTED) |
| | 1 | 103273 | CYLINDER 2 X 4 | HYD. DEFLECTOR PKG |
| | 1 | 102834 | ACTUATOR ELECTRIC | ELEC. DEFLECTOR PKG |
| 8 | 1 | 315049 | SHIELD CHAIN ROTATE PAINTED | (315048 UNPAINTED) |
| 9 | 1 | 311722 | MOUNT SHIELD 925 W/A | |
| 10 | 1 | 311723 | SHIELD DRIVESHAFT 925 W/A | |
| 11 | 1 | 300213 | CUTTING EDGE B 98 DB | |
| | 1 | 311927 | CUTTING EDGE B 110 DB | |
| 12 | 4 | 201316 | SKID SHOE W/A | |
| 13 | 2 | 100461 | LEG SKID SHOE PAINTED | (310319 UNPAINTED) |
| 14 | 2 | 311940 | LEG SHID SHOE PAINTED | (311939 UNPAINTED) |
| 15 | 1 | 315124 | PIN DEFLECTOR W/A | |
| 16 | 1 | 103329 | MOTOR HYD 2.8 CID H SERIES | |
| 17 | 1 | 100539 | SPROCKET 40B12 X 1 B | |
| 18 | 1 | 100528 | CHAIN ROLLER NO 40 X 90P 2 C/L | |
| 19 | 2 | 310570 | LINKAGE DEFL PNT (310569 UNPNT) | ELEC. DEFLECTOR PKG |
| 20 | 2 | 13214 | BOLT HEX 1/2 X 2-3/4 NC GR 5 | ELEC. DEFLECTOR PKG |
| 21 | 4 | 315020 | ROLLER CHUTE | |
| 22 | 1 | 13114 | BOLT HEX 3/8 X 2-3/4 NC GR 5 | ELEC. DEFLECTOR PKG |
| 23 | 1 | 311943 | SHIELD CHAIN 965 PAINTED | (311942 UNPAINTED) |
| 24 | 1 | 330864 | HOLDER MANUAL CANISTER 12.5 X 2.25 | |
| 25 | 4 | 315155 | ROLLER GREASABLE BUSHING | |
| 26 | 2 | 311945 | BRKT UPPER 3PT 965 PAINTED | (311944 UNPAINTED) |
| 27 | 2 | 420069 | BUSHING 1.10 x .91 x 2.50 Z | |
| 28 | 1 | 311947 | BRKT UPPER LINK PAINTED | (311946 UNPAINTED) |
| 29 | 2 | 13053 | BOLT HEX | 5/16 X 3/4 NC GR 5 |
| 30 | 1 | 102687 | PIN HITCH 1/2 X 2-3/8 | |
| 31 | 1 | 104410 | PIN CLIP #9 5/32 X 3-1/16 | |
| 32 | 1 | 65076 | PIN COTTER 1/8 X 1 | |
| 33 | 2 | 37820 | COUPLING NUT 3/8 X 1-3/4 ZINC | |
| 34 | 6 | 19929 | BOLT FLANGED | 3/8 X 3/4 NC FLG |
| 35 | 1 | 104511 | PIN 3PT CAT2 TOP 1 X 4-3/8 | |
| 36 | 5 | 104432 | PIN LYNCH 7/16 X 1-3/4 | |
| 37 | 2 | 300747 | PIN 1.12 X 8.25 W/HOLES Z | |
| 38 | 2 | 300748 | BUSH 1.43 X 1.14 X 2.88 Z | |
| 39 | 2 | 300749 | BUSH 1.75 X 1.14 X 3.00 Z | |
| 40 | 2 | 37211 | NUT REV LOCK | 5/16 NC GR 5 |
| 44 | 14 | 13309 | BOLT HEX | 5/8 X 1-1/2 NC GR 5 |
| 45 | 6 | 37217 | NUT REV LOCK | 3/4 NC |
| 47 | 2 | 13371 | BOLT HEX | 3/4 X 4-1/2 NC GR 5 |
| 48 | 6 | 33018 | WASHER FLAT | 3/4" |
| 49 | 6 | 13363 | BOLT HEX | 3/4 X 2-1/2 NC GR 5 |
| 50 | 2 | 13463 | BOLT HEX | 1 X 2-1/2 NC GR 5 |
| 51 | 2 | 33632 | WASHER LOCK | 3/4" |
| 52 | 2 | 33636 | WASHER LOCK | 1" |
| 53 | 2 | 36116 | NUT HEX FULL | 3/4 NC |
| 54 | 2 | 36120 | NUT HEX FULL | 1 NC |
| 55 | 1 | 13124 | BOLT HEX | 3/8 X 5-1/2 NC GR 5 |
| 56 | 3 | 37212 | NUT REV LOCK | 3/8 NC |
| | 3 | 37212 | NUT REV LOCK 3/8 NC | ELEC. DEFLECTOR PKG |
| 57 | 2 | 103116 | BOLT HEX | 3/8 X 1 NC GR 5 |
| | 2 | 103116 | BOLT HEX 3/8 X 1 NC GR 5 | ELEC. DEFLECTOR PKG |
| 58 | 4 | 13313 | BOLT HEX | 5/8 X 2-1/2 NC GR 5 |
| 59 | 8 | 13309 | BOLT HEX | 5/8 X 2 NC GR 5 |

PARTS INFORMATION

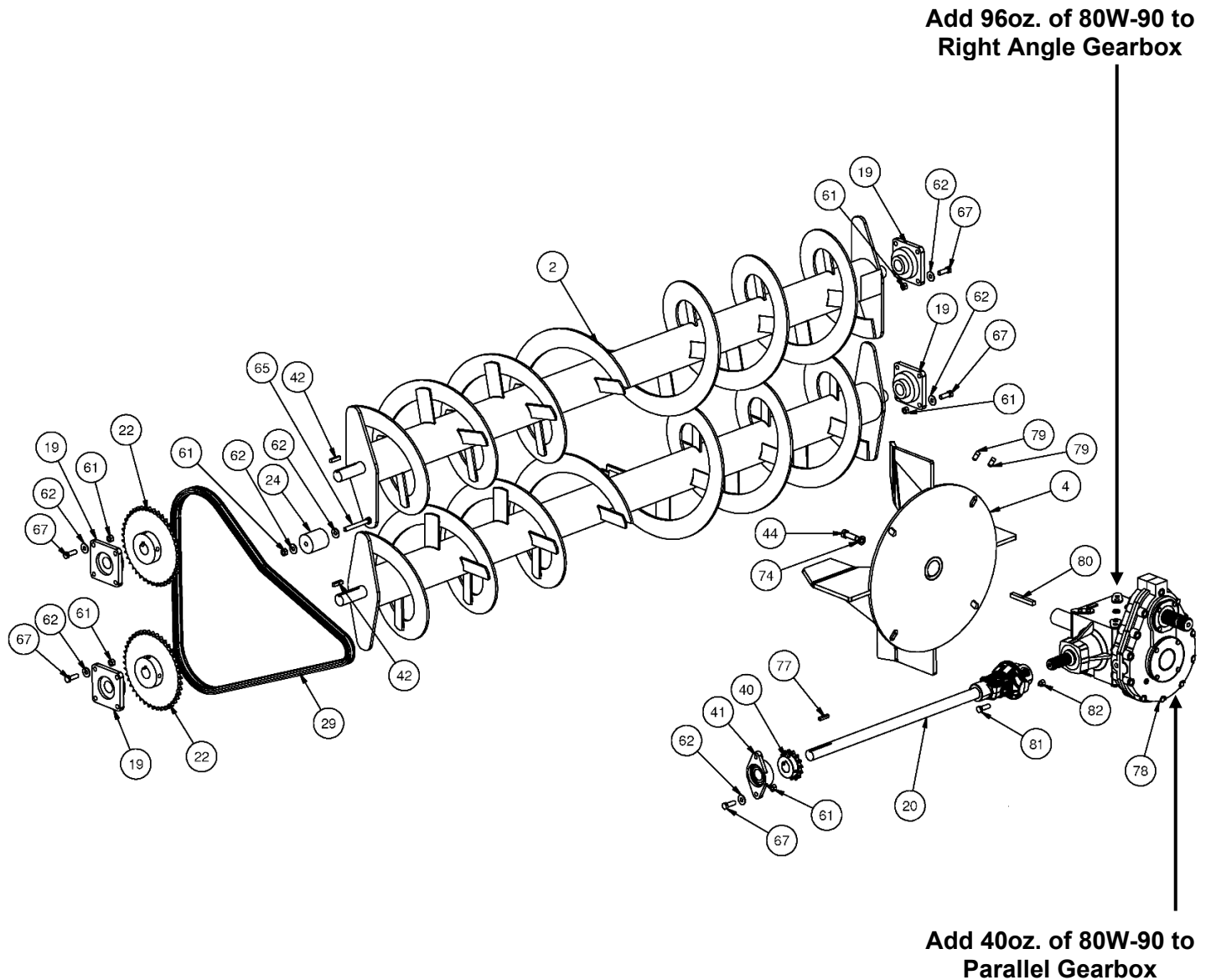
| ITEM | QTY | PART NO. | DESCRIPTION | STOCK NO. |
|------|-----|----------|--------------------------------------|---------------------|
| 60 | 4 | 13213 | BOLT HEX | 1/2 X 2-1/2 NC GR 5 |
| 61 | 7 | 37214 | NUT REV LOCK | 1/2 NC |
| | 1 | 37214 | NUT REV LOCK 1/2 NC | HYD. DEFLECTOR PKG |
| | 4 | 37214 | NUT REV LOCK 1/2 NC | ELEC. DEFLECTOR PKG |
| 62 | 1 | 33010 | WASHER FLAT | 7/16" |
| 63 | 4 | 33016 | WASHER FLAT | 5/8" |
| 64 | 21 | 36114 | NUT HEX FULL 5/8" NC | 965RM ONLY |
| | 22 | 36114 | NUT HEX FULL 5/8" NC | 1085RM ONLY |
| 66 | 8 | 37216 | NUT REV LOCK | 5/8 NC |
| 67 | 2 | 13209 | BOLT HEX | 1/2 X 1-1/2 NC GR 5 |
| 68 | 9 | 22665 | BOLT PLOW 5/8 X 2 NC GR5 | 965RM ONLY |
| | 10 | 22665 | BOLT PLOW 5/8 X 2 NC GR5 | 1085RM ONLY |
| 71 | 1 | 13212 | BOLT HEX | 1/2 X 2-1/4 NC GR 5 |
| | 1 | 13212 | BOLT HEX 1/2 X 2-1/4 NC GR 5 | HYD. DEFLECTOR PKG |
| | 2 | 13212 | BOLT HEX 1/2 X 2-1/4 NC GR 5 | ELEC. DEFLECTOR PKG |
| 74 | 27 | 33897 | WASHER LOCK 5/8 HIGH ALLOY | 965RM ONLY |
| | 28 | 33897 | WASHER LOCK 5/8 HIGH ALLOY | 1065RM ONLY |
| 76 | 2 | 103622 | CHAIN CONN 40 | |
| 77 | 2 | 201389 | HRN. ELEC. DEFL. 3-PIECE (NOT SHOWN) | ELEC. DEFLECTOR PKG |
| 78 | 6 | 13309 | BOLT HEX | 5/8 X 1.5 NC GR 5 |



PARTS INFORMATION

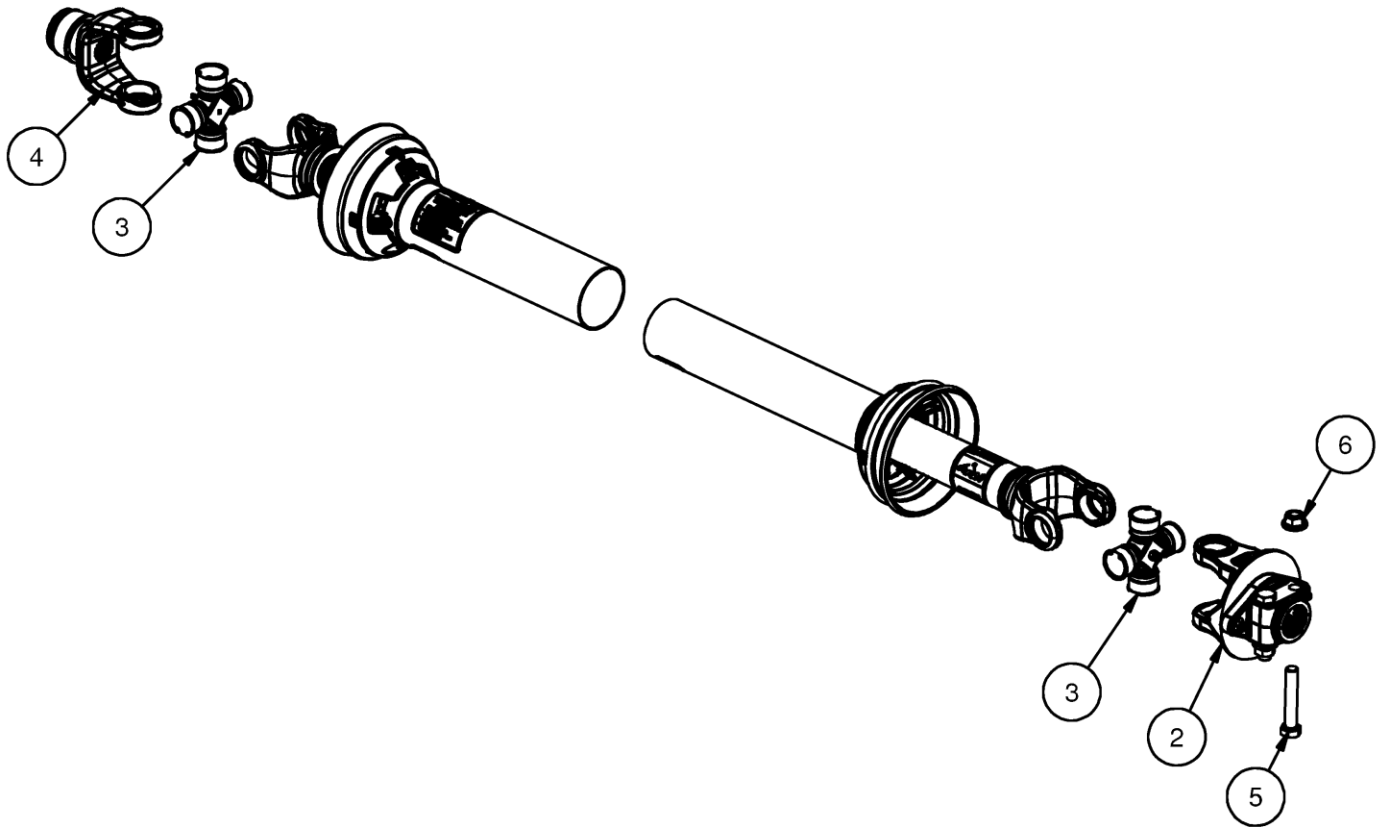
| ITEM | QTY | PART NO. | DESCRIPTION | STOCK NO. |
|------|-----|----------|----------------------------------|---------------------|
| 2 | 2 | 311902 | AUGER 16D X 96 W/A | |
| | 2 | 311903 | AUGER 16D X 108 W/A | |
| 4 | 1 | 201097 | FAN 30D 960FM 2.0 CCW W/A | |
| 19 | 4 | 104713 | BRG 1-1/2 4-B FLG | |
| 20 | 1 | 311716 | AUGER DS 14S 21T X 37.75 925 | |
| | 1 | 311735 | AUGER DS 14S 21T X 44.12 1085 | |
| 22 | 2 | 310652 | SPROCKET 60B42 1-1/2 B | |
| 24 | 1 | 311724 | IDLER PLASTIC 2.50 OD X 2.75 | |
| 29 | 1 | 311941 | CHAIN ROLL 60H X 126P C/L | |
| 40 | 1 | 311466 | SPROCKET 60B15 X 1.38 B | |
| 41 | 1 | 311730 | BRG 1-3/8 2-B FLG | |
| 42 | 2 | 319115 | KEY 3/8 X 1-1/2 | |
| 44 | 1 | 13309 | BOLT HEX | 5/8 X 1-1/2 NC GR 5 |
| 61 | 19 | 37214 | NUT REV LOCK | 1/2 NC |
| 62 | 20 | 33010 | WASHER FLAT | 7/16" |
| 65 | 1 | 13219 | BOLT HEX | 1/2 X 4 NC GR 5 |
| 67 | 18 | 13209 | BOLT HEX | 1/2 X 1-1/2 NC GR 5 |
| 74 | 1 | 33897 | WASHER LOCK | 5/8 HIGH ALLOY |
| 77 | 1 | 100810 | KEY 5/16 X 1-1/2 | |
| 78 | 1 | 311953 | GEARBOX 900/590 COMBO 1.38 X 21T | |
| 79 | 2 | 100494 | SET SCREW | 1/2 X 1 SQ HD |
| 80 | 1 | 310730 | KEY SQ 1/2 X 4 | |
| 81 | 1 | 13061 | BOLT HEX 5/16 X 2 NC GR 5 | SHEAR |
| 82 | 1 | 37211 | NUT REV LOCK 5/16 NC GR 5 | SHEAR |

PARTS INFORMATION



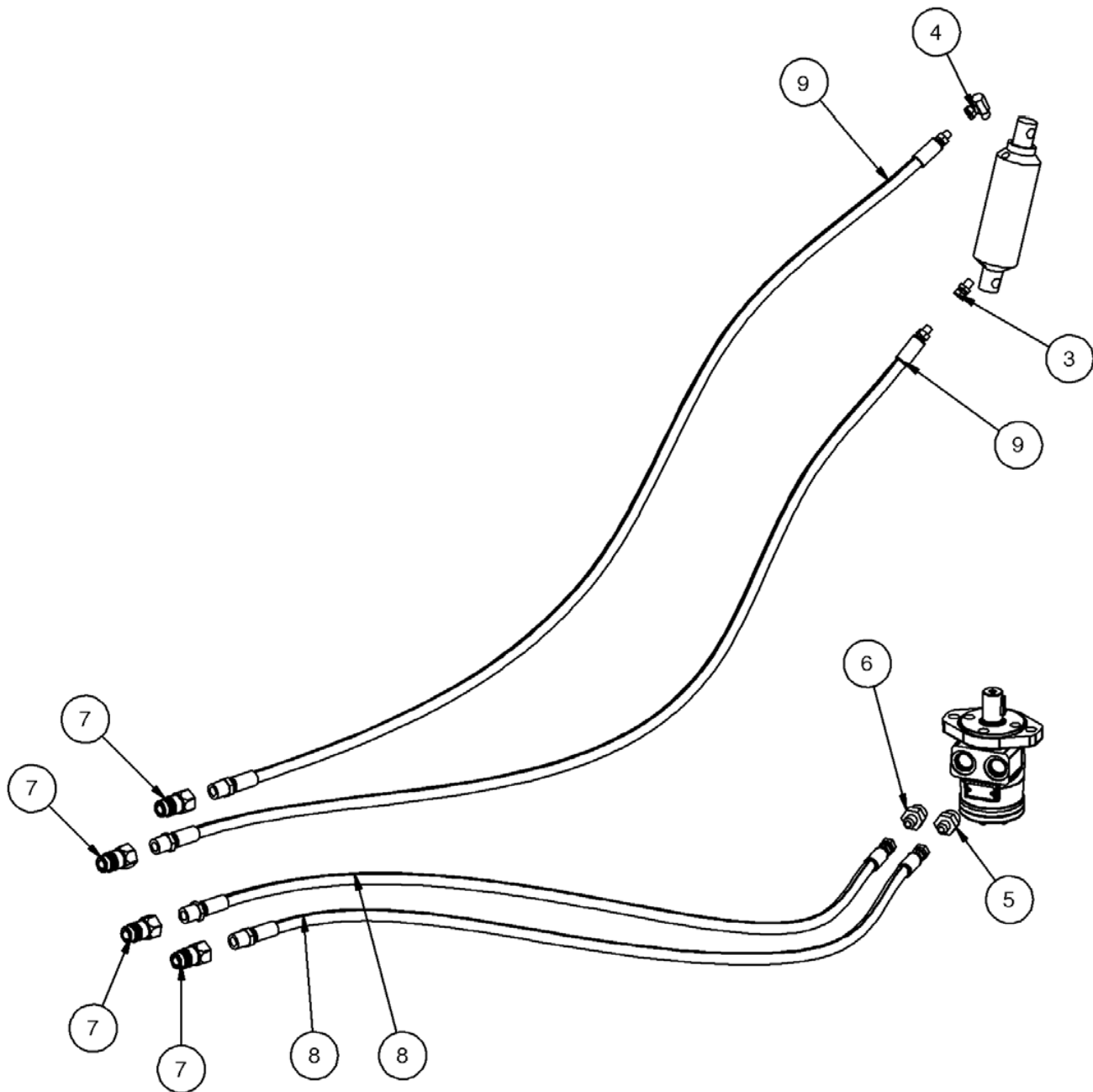
PARTS INFORMATION

| ITEM | QTY | PART NO. | DESCRIPTION | STOCK NO. |
|------|-----|----------|--------------------------------|---------------------|
| | 1 | 201666 | DRIVELN 55S 21T X 20T X 35.75 | 1000S PTO |
| | 1 | 201667 | DRIVELN 55S 20T X 20T X 35.94 | 1000L PTO |
| 2 | 1 | 202196 | YOKE 55S IMP SHEAR 1 1/2-23SPL | |
| 3 | 2 | 104274 | REPAIR KIT U-JOINT 55S | |
| 4 | 1 | 201664 | YOKE 55S SLIDE LK 1 3/8 21 SPL | 1000S PTO |
| | 1 | 200390 | YOKE 55S SLIDE LK 1 3/4 20 SPL | 1000L PTO |
| 5 | 2 | | BOLT HEX FLNGD | 5/8 X 3-1/2 NC GR 8 |
| 6 | 2 | | NUT FLG TOP LOCK | 5/8 NC GR 8 |



PARTS INFORMATION

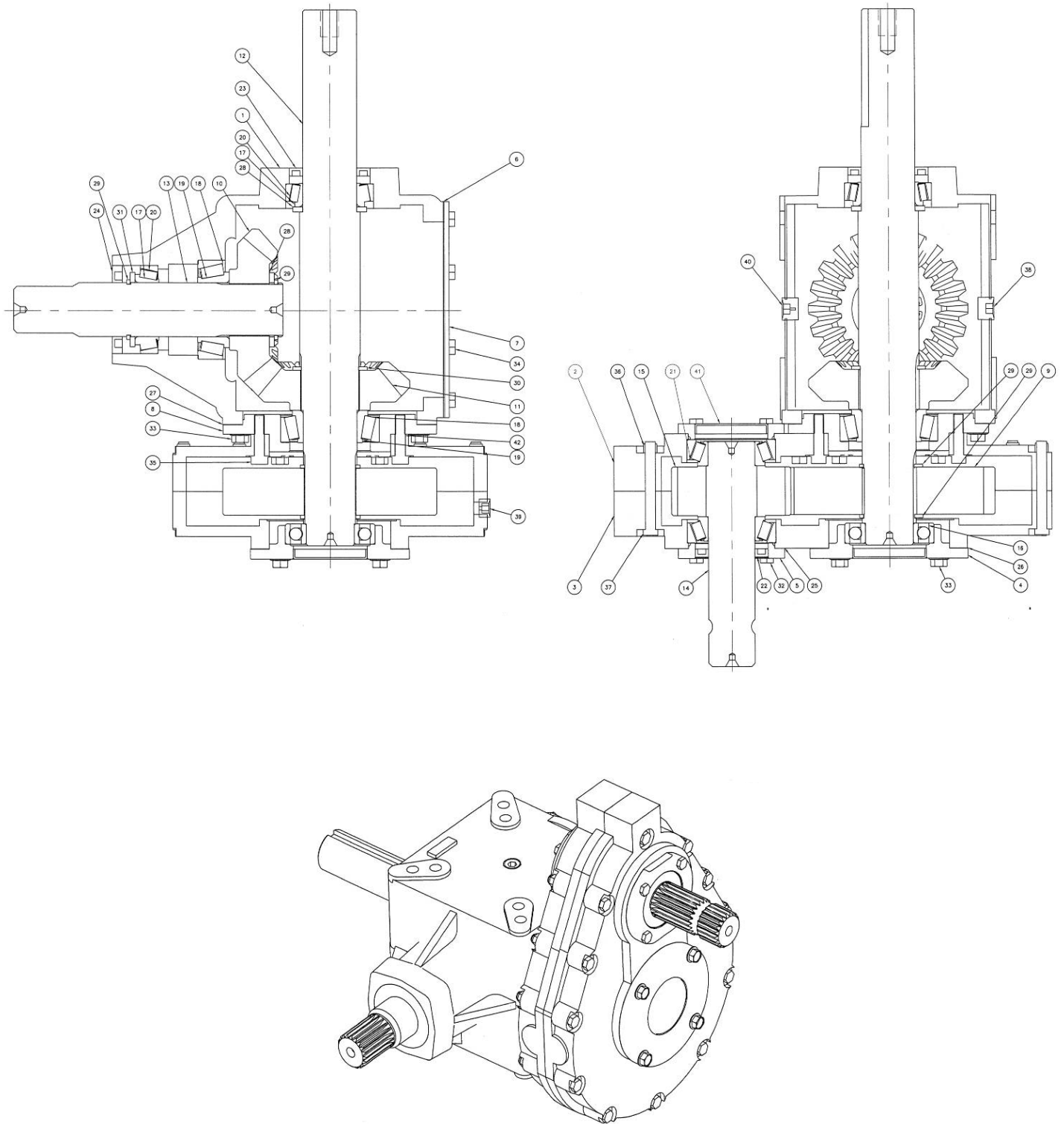
| ITEM | QTY | PART NO. | DESCRIPTION | STOCK NO. |
|------|-----|----------|--------------------------------|-------------------|
| 3 | 1 | 103318 | ADPT STR 2MP-2FPX | HYD DEFLECTOR PKG |
| 4 | 1 | 320064 | ADPT REST ELB 2MP-2FPX-90-1/16 | HYD DEFLECTOR PKG |
| 5 | 1 | 320659 | ADPT RESTRICTOR 10MB-6MJ-1/32 | |
| 6 | 1 | 201522 | ADPT STR 10MB-6MJ | |
| 7 | 2 | 320623 | COUPLER HYD 1/2-8FP M PPT | |
| 8 | 2 | 311745 | HOSE 1/4 X 90 8MP-6FJX90 | |
| 9 | 2 | 310891 | HOSE 1/4 X 104 8MP-2MP | HYD DEFLECTOR PKG |



PARTS INFORMATION

| ITEM | QTY | PART NO. | DESCRIPTION | STOCK NO. |
|------|-----|----------|--------------------------------|-----------|
| 1 | 1 | 320689 | CASTING GEARBOX 900 GB | |
| 2 | | 300632 | 590 GEARBOX CASE | |
| 3 | 1 | 300633 | 590 GEARBOX CASE | |
| 4 | 1 | 300634 | GEARBOX COVER | |
| 5 | 1 | 300635 | GEARBOX COVER | |
| 7 | 1 | 320690 | COVER HOUSING (CLOSED) 900 GB | |
| 8 | 2 | 300636 | COVER ADAPTOR | |
| 9 | 1 | 300637 | GEAR 46T 23T 12/24 | |
| 10 | 1 | 320688 | GEAR BEVEL 16T 900 GB | |
| 11 | 1 | 300638 | GEAR 22T 35T 16/32 | |
| 12 | 1 | 300639 | CROSS SHAFT | |
| 14 | 1 | 300640 | SHAFT INPUT | |
| 15 | 1 | 300641 | PINION 25T 23T 12/24 SP. | |
| 16 | 1 | 300642 | BRG BALL 6209 | |
| 18 | 1 | 300643 | BRG CUP 3730 | |
| 21 | 2 | 300644 | BRG TAPERED | |
| 23 | 1 | 203650 | SEAL OIL 2 X 3 | |
| 24 | 1 | 320681 | SEAL PINION SHAFT 900 GB | |
| 25 | 2 | 300645 | SHIM COVER | |
| 26 | 2 | 300646 | SHIM 4.50 - .007 | |
| 27 | 1 | 203634 | SHIM COVER .007 | |
| 28 | 2 | 203635 | SHIM THRU SHAFT 2.00 X .007 | |
| 29 | 4 | 203639 | RING SNAP 2" (THRU SHAFT) | |
| 31 | 3 | 320685 | WASHER 2" ID PINION 900 GB | |
| 33 | 10 | 203643 | BOLT 3/8 X 1 NC GR5 (905) | |
| 34 | 8 | 320684 | BOLT 3/8 X 3/4 NC GR5 (900 GB) | |
| 38 | 1 | 203637 | PIPE PLUG 1/2 NPT | |
| 39 | 1 | 203632 | VENT 3/8 NPT | |
| 41 | 1 | 300648 | EXP. PLUG 2.75 D | |
| 42 | 2 | 300649 | PIN .313 X 1.25 | |

PARTS INFORMATION



GENERAL SPECIFICATIONS

| Model | 965RM | 1085RM |
|---|---|---|
| Stage | 2 | 2 |
| Cutting Width | 96" | 108" |
| Cutting Height | 36" | 36" |
| Casting Distance | Up to 50' | Up to 50' |
| Fan Diameter | 30" 4-blade (shear bolt protected) | 30" 4-blade (shear bolt protected) |
| Auger Diameter | 16" dual open flyting (shear bolt protected) | 16" dual open flyting (shear bolt protected) |
| PTO Input Speed | 1000 RPM | 1000 RPM |
| Chute Rotation | Hydraulic 270° | Hydraulic 270° |
| Driveline | 55 series | 55 series |
| HP Required | 90-175 HP | 90-175 HP |
| Hitch Requirement | CAT. II or CAT. III Narrow | CAT. II or CAT. III Narrow |
| Operating Weight (w/ standard equipment) | 1,820 lbs. | 1,920 lbs. |



LIMITED WARRANTY

Quick Attach Attachments LLC warrants each new machine manufactured by us to be free from defects in material and workmanship for a period of twenty-four (24) months from date of delivery to the original purchaser.

Our obligation under this warranty is to replace free of charge, at our factory or Direct Outlet locations, any part proven defective within the stated warranty time limit.

All parts must be returned freight prepaid and adequately packaged to prevent damage in transit.

This warranty does not cover:

1. New products which have been operated in excess of rated capacities or negligence
2. Misuse, abuse, accidents or damage due to improperly routed hoses
3. Machines which have been altered, modified or repaired in any manner not authorized by our company
4. Previously owned equipment
5. Any ground engaging tools in which natural wear is involved, i.e. tooth tips, cutting teeth, etc
6. Normal maintenance
7. Fork tines
8. Hydraulic motors that have been disassembled in any manner

In no event will the Sales Representative, Direct Outlet, Quick Attach Attachments LLC, or any other company affiliated with it or them be liable for incidental or consequential damages or injuries, including but not limited to the loss of profit, rental or substitute equipment or other commercial loss. Purchaser's sole and exclusive remedy being as provided here in above.

Quick Attach Attachments LLC must receive immediate notification of defect and no allowance will be made for repairs without our consent or approval.

This warranty is in lieu of all other warranties, express or implied by law or otherwise, and there is no warranty of merchantability or fitness purpose.

No agent, employee, or representative of Quick Attach Attachments LLC has any authority to bind Quick Attach Attachments LLC to any warranty except as specifically set forth herein. Any of these limitations excluded by local law shall be deemed deleted from this warranty; all other terms apply.

This warranty may not be enlarged or modified in any manner except in writing signed by an executive officer of Quick Attach Attachments LLC to improve its products whenever it is possible and practical to do so. Quick Attach Attachments LLC reserves the right to make changes and or add improvements at any time without incurring any obligation to make such changes or add such improvements to products previously sold.

Quick Attach Attachments LLC
P.O. Box 128 Alexandria, MN 56308
Phone (320) 759-1551 Fax (320) 759-1590



P/N 311955
Quick Attach Attachments LLC

Date Printed: 11/5/2025
Printed in U.S.A.