

QUICK SPLIT V2

Operator's Manual

Maintenance & Parts Information



Read this Manual Before Use

TABLE OF CONTENTS

SAFETY	3-4
DECAL INFORMATION	5-6
MOUNTING INSTRUCTIONS	7-8
OPERATING INSTRUCTIONS	9
MAINTENANCE	10
TORQUE INFORMATION	11
PARTS INFORMATION	12-14
GENERAL SPECS	15
NOTES	16-18
WARRANTY	19

NOTE: Write your serial number for your attachment in the spaces below. Always refer to this serial number when calling for services parts.

Serial Number

Attachment Dealer

Address

Phone Number

Contact

NOTE: Quick Attach LLC reserves the right to make improvements in design or changes in specifications at any time without notice and without incurring any obligations to install them on units previously sold.

SAFETY

DO NOT use or perform maintenance on this machine until this manual has been read and understood. In addition, read the Operation and Maintenance Manual(s) pertaining to the attachment and the attachment carrier (“Loader”).

The user is responsible for inspecting the machine daily, and for having parts repaired or replaced when continued use of the machine would cause damage, excessive wear to other parts or make the machine unsafe for continued operation.

If an operating procedure, tool device, maintenance or work method not specifically recommended is used; you must satisfy yourself that it is safe for you and others. You must also ensure that the attachment will not be damaged or made unsafe by the procedures you choose.

Quick Attach LLC cannot anticipate every possible circumstance that might involve potential hazard. The safety messages found in this manual and on the machine are therefore not all inclusive

The signal words **CAUTION**, **WARNING**, or **DANGER** are used to indicate hazards.

CAUTION

Indicates a potentially hazardous situation which, if not avoided, may result in minor or moderate injury.

WARNING

Indicates a potentially hazardous situation which, if not avoided, could result in death or serious injury.

DANGER

Indicates a potentially hazardous situation which, if not avoided, will result in death or serious injury.

The word **IMPORTANT** is used in the text when immediate damage will occur due to improper technique or operation.

The word **NOTE** is used to convey information that is out of context with the manual text; special information such as specifications, techniques, reference information, and other information of a supplementary nature.

SAFETY

Improper operation can cause serious injury or death.

PRE-OPERATION

- This attachment is designed for mowing grass, brush, and small trees only. **NEVER** use this attachment for purposes other than intended.
- Read the operator's manual for the "Skid Steer Loader". **NEVER** allow untrained people to operate.
- Operating instructions must be given to everyone before operating this machine and at least once a year thereafter in accordance with OSHA regulations.
- **NEVER** exceed the maximum recommended input power or speed specifications for the attachment. Over-powering or over-speeding the attachment may cause personal injury and/or machine damage.
- Keep all shields, guards, and covers in place.
- Do not modify equipment or add attachments that are not approved by Quick Attach LLC.
- Use adequate safety warning lights and devices as required by local regulations. Obey all local laws and regulations regarding machine operation on public property.

OPERATION

- Always wear eye protection that meets z87.1 or use with a loader enclosure that provides similar protection.
- Hydraulic connections may be hot after use. Use gloves if connecting or disconnecting after use.
- Check and be sure all operating controls are in neutral before starting the engine.
- Keep people away from loader and attachment when in use. This attachment can send objects flying. **NEVER** direct discharge toward people - rocks and debris can be thrown hundreds of feet.

OPERATION (continued)

- **NEVER** operate near embankments or terrain that is so steep that rollover could occur.
- Always stay in the operator position when using the attachment.
- Before leaving the operator position, disengage hydraulic drive, lower the attachment to rest flat on the ground, stop engine, set park brake, and wait for all motion to stop.
- **NEVER** place hands in the discharge chute or clear debris while engine is running.

AVOID HIGH PRESSURE FLUIDS HAZARD

- Escaping fluid under pressure can penetrate the skin causing serious injury.
- Avoid the hazard by relieving the pressure before disconnecting hydraulic lines.
- Use a piece of paper or cardboard, **NOT BODY PARTS**, to check for suspected leaks. Wear protective gloves and safety glasses or goggles when servicing or performing maintenance on hydraulic systems.
- If an accident occurs, see a doctor immediately. Any fluid injected into the skin must be surgically removed within a few hours or gangrene may result.

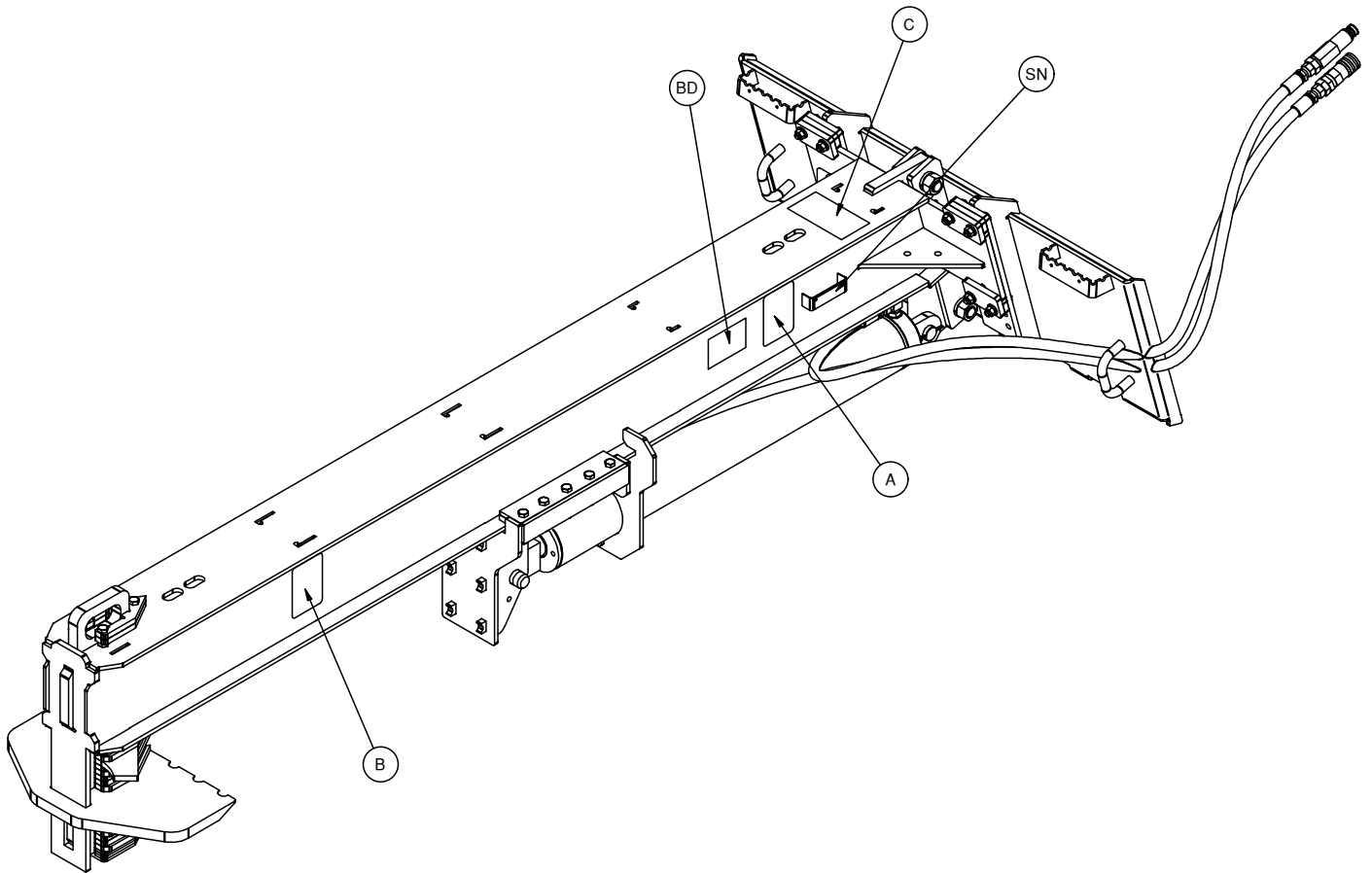
MAINTENANCE

- **NEVER** make adjustments, lubricate, clean, or perform any service on the machine while it is in operation.
- Make sure the attachment is serviced on a daily basis. Improper maintenance can cause serious injury or death in addition to damage to the attachment and/or your equipment.

DECAL INFORMATION

Serial Number Location:

It is important to refer to the serial number of your attachment when making repairs or ordering parts. Early or later models (identification made by serial number) may use different parts, or it may be necessary to use different procedures in doing a specific operation. Please see below for Serial Plate location.



DECAL INFORMATION

A



Part number: 200001

Location: On side of frame next to serial plate

Quantity: 1

B



Part number: 203234

Location: On both sides of frame

Quantity: 2

C



Part number: 320359

Location: On top of frame

Quantity: 1

BD



1-866-428-8224
P.O. Box 128 • Alexandria, MN 56308 • USA

Brand Decal: Small

Location: On both sides of frame

Quantity: 2

Safety Decals Locations:

The locations of the safety decals are shown. If these decals are missing, damaged, or painted over they must be replaced. Call Quick Attach LLC (320-759-1551) for replacement decals.

MOUNTING INSTRUCTIONS

After the initial set-up assembly is completed use the following procedure to mount the attachment to the loader for user operation.

⚠ WARNING

Coupler wedges or pins must extend through holes in attachment. Levers must be fully down and locked. Failure to secure wedges or pins can allow the attachment to come off and cause injury or death.

1. Use the step, safety treads, and grab handles to get on and off the loader and attachment.
2. Sitting in the operator's seat, lower seat bar (if so equipped) and fasten the seat belt.
3. Drive the loader to the rear of the attachment. Put the loader quick attach coupler into the attachment mounting bracket.
4. Tilt the loader coupler backward a small amount until it is fully engaged in the attachment mounting bracket.
5. Stop the engine and engage the park brake.
6. Secure the coupler locking mechanism that attaches the attachment to the loader.
7. Connect the hydraulic quick couplers from the attachment to the loader.



IMPORTANT: Wipe the ends of the hydraulic quick couplers (both lead and loader) with a rag to remove any possible contamination. Contamination can cause hydraulic components to fail and is not covered under warranty.

MOUNTING INSTRUCTIONS

IMPORTANT: Make sure the quick couplers are fully engaged. If the quick couplers do not fully engage, check to see that the couplers are the same size and brand. Do not force the quick couplers together.

NOTE: See the loader's operator's manual for auxiliary hydraulic specifications and connection instructions.

8. Make sure the hoses are properly routed to fit your specific loader. If the hoses are not routed correctly, hoses may get pinched or rub on tires. Be sure to check the hose routing through the full range of intended motion of the attachment before operating it. More than one routing may be acceptable depending on the loader. Pick the routing that best suits your loader.

IMPORTANT: Proper hose routing is the responsibility of the owner and/or operator. Pinched or stretched hoses are not covered under warranty.

9. Mounting is now complete and you are ready to use the attachment. Use reverse order of above instructions to dismount the attachment from the loader.



OPERATING INSTRUCTIONS

⚠ WARNING To reduce the risk of injury or death check that attachment is operating properly when you first use a machine, after service.

1. With the operator in the seat of the loader, the seat belt fastened, and the seat bar lowered (if so equipped), start the engine.
2. Raise the attachment slightly off of the ground.
3. Activate the loader's auxiliary hydraulics to open and close the splitting wedge.
4. Position the skid steer and log splitter above the log to be split. Always split from the end of the log along the grain.



IMPORTANT: Never split a log across the grain. This log splitter is not designed for cross-grain splitting, and doing so may damage the splitter.

5. With the splitting wedge in the fully open position, lower the splitter over the log, aligning the log in the center of the wedge track. If the log is angled or off to one side, the split will be uneven or the log may slip out of the splitter.
6. Close the splitting wedge to split the log.
7. Open the wedge and move on to the next log to be split.



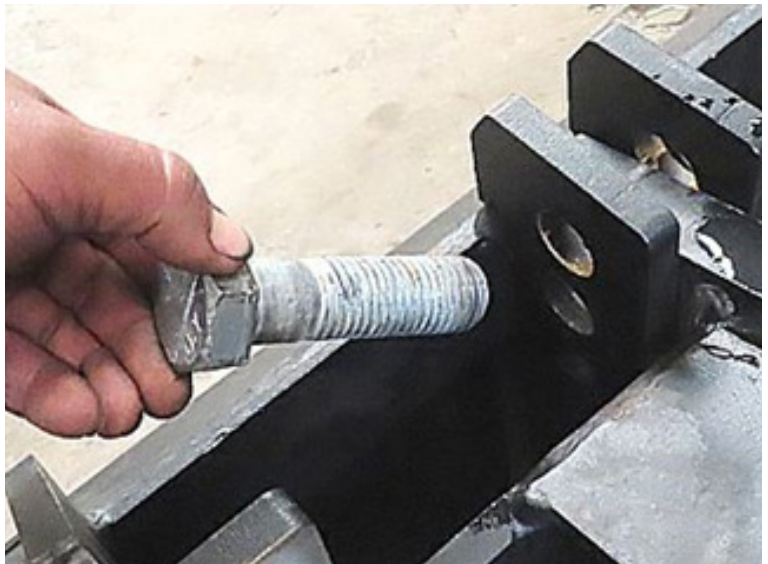
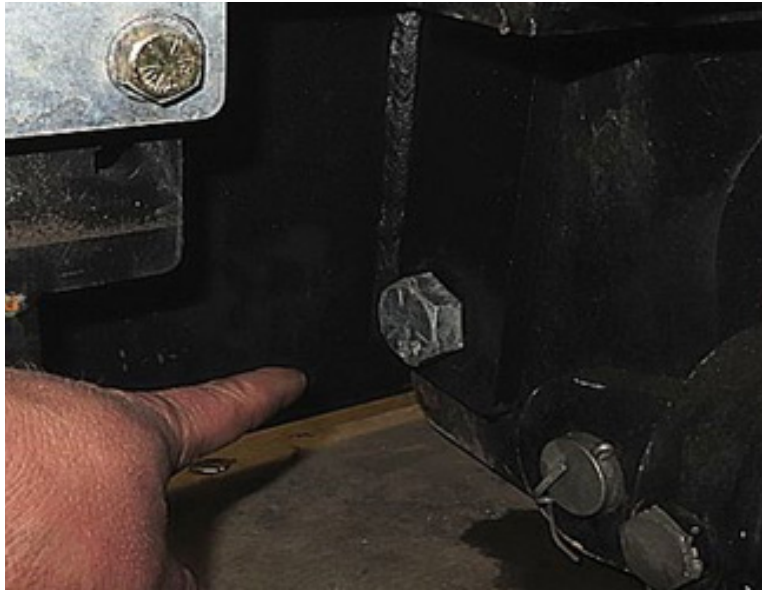
NOTE: The inverted log splitter can be equipped with a 4-way splitter wedge plate. The 4-way wedge bolts onto the splitter in place of (2) standard 2-way wedge plates.



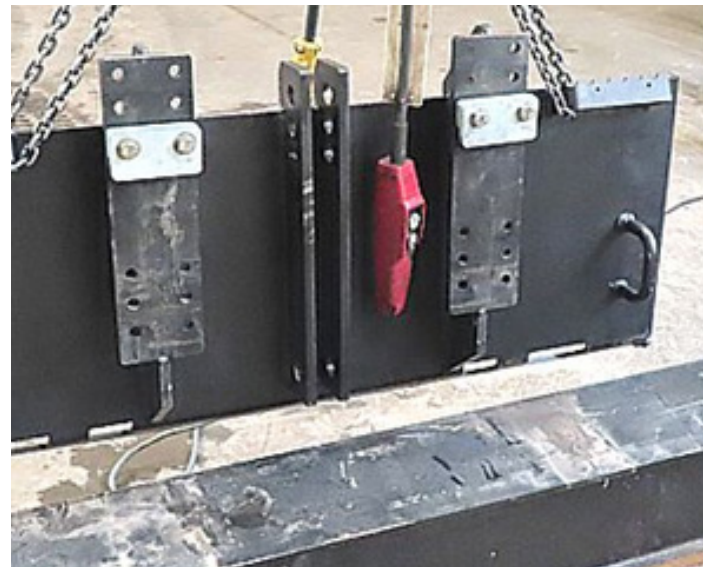
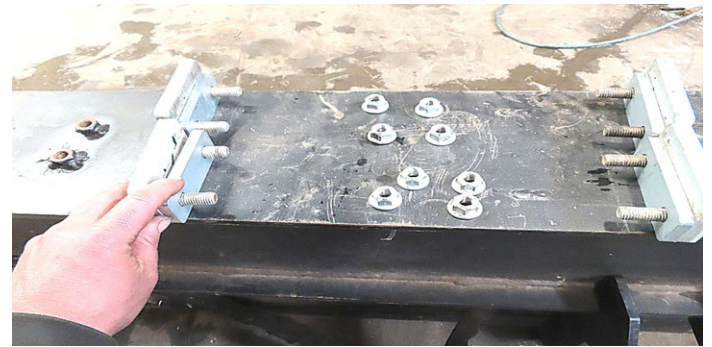
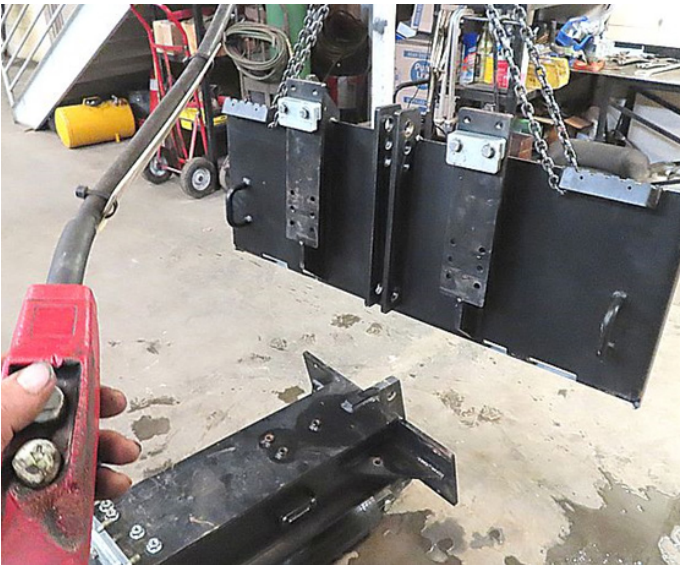
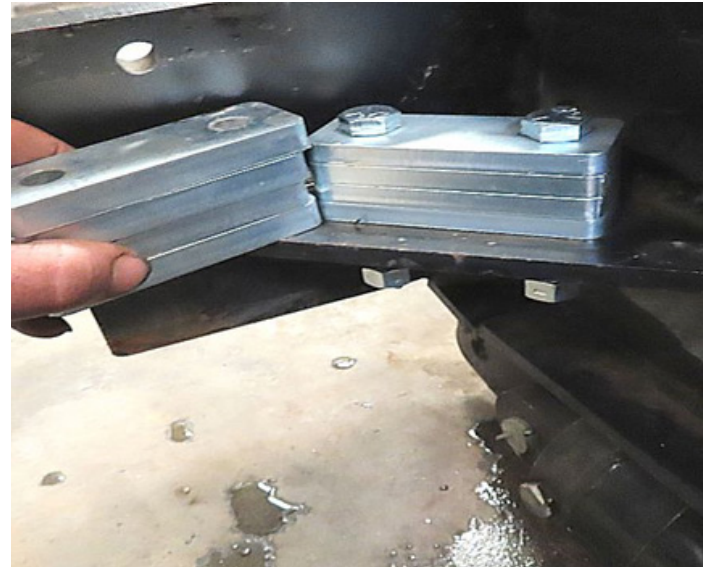
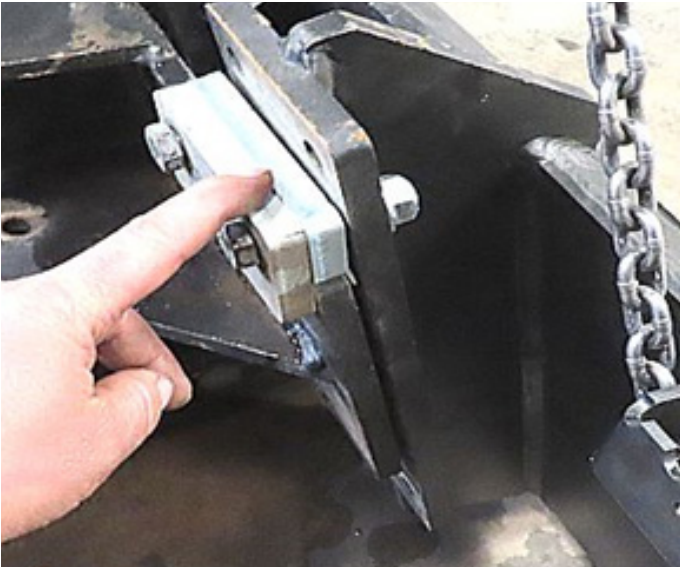
OPERATING INSTRUCTIONS

Changing Orientation of Mounting Plate

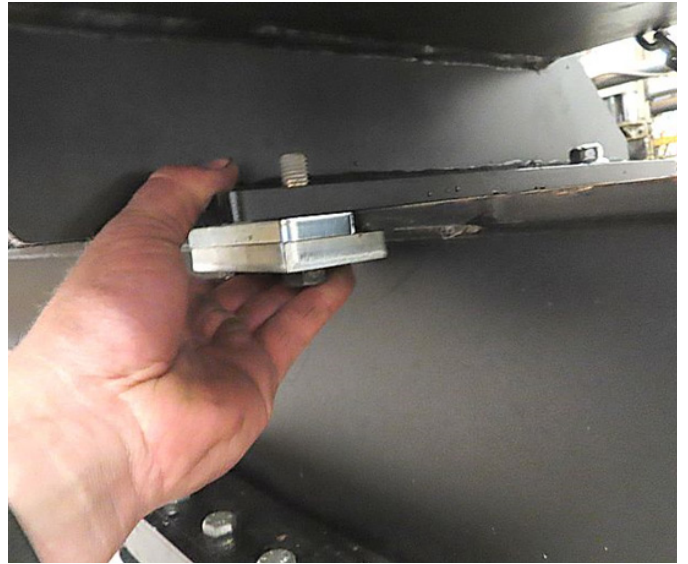
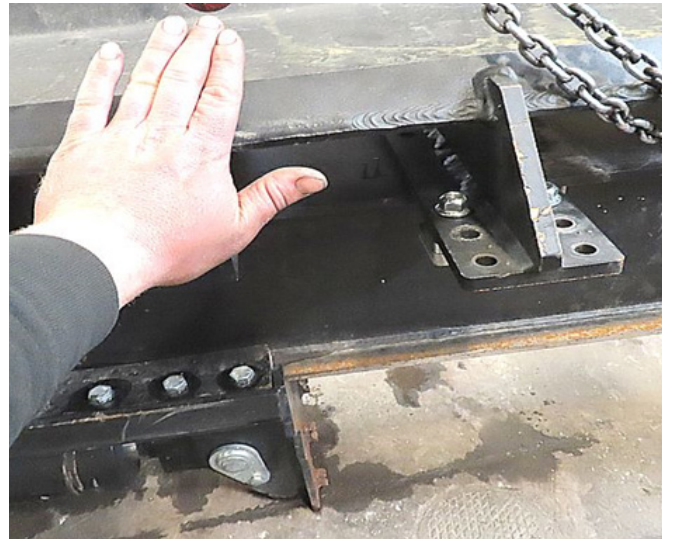
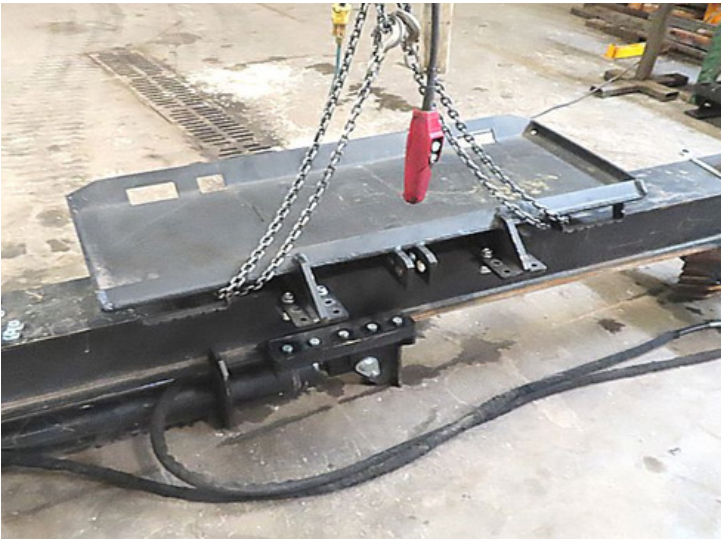
1. Remove bottom 1" Hex Bolt First.
2. Remove top 1" Hex Bolt.
3. Remove the 0.500" spacer plates, on the bottom of both sides.
4. Loosen the top 0.500" spacer plate on both sides.
5. With the top 0.500" spacer plates loose, lift the mount off the splitter.
6. Remove the top 0.500" spacer plates.
7. Remove the 0.375" spacer plates from the storage area on the splitter, and replace them with the 0.500" spacer plates.
8. Put on the 0.375" spacer plate.
9. Keeping the 0.375" spacer plate loose, install the top spacer plates on top on both sides.
10. Lay the mounting plate horizontally across the splitter, and slide until the spacer plate is underneath the lip of the splitter. The placement of the mount can be orientated anywhere along the top of the splitter, keeping hose routing in mind.
11. Fasten and tighten down all four spacer plates.



OPERATING INSTRUCTIONS



OPERATING INSTRUCTIONS

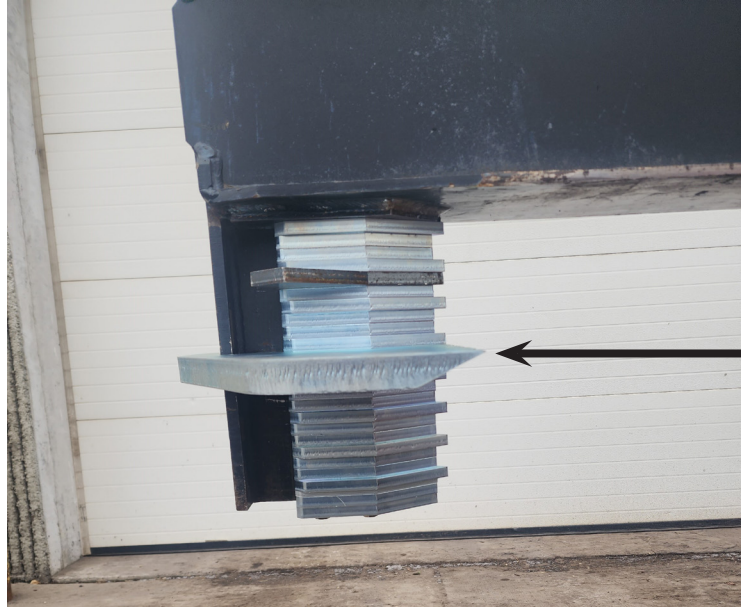


SAFETY

⚠ WARNING It is the operators responsibility to ensure the 4-way wedge is installed correctly to eliminate potential injury and/or attachment damage.

NOTE: Damage caused by the wedge being installed incorrectly will not be covered under warranty.

The bevel of the wedge must face away from the frame of the log splitter as shown in the two photos.



ROUTINE MAINTENANCE

⚠ WARNING Lower the attachment to rest flat on the ground, make sure wedge is in fully open position, shut down the engine, relieve the hydraulic pressure to the attachment, set the park brake, and wait for all motion to stop before leaving the operator's seat to perform service of any kind.

It is the operator's responsibility to make daily inspections of the loader and attachment for damage, loose bolts, fluid leaks, or anything else that could cause a potential service or safety problem. Preventive maintenance is the easiest and least expensive type of maintenance.

IMPORTANT: Bolts can loosen after initial usage. After the first hour of operation check all bolts.

1. Periodically clean debris and small wood chips off of the log splitter.
2. It is recommended to coat the slide with a light layer of grease before long periods of storage to prevent rusting.



TORQUE INFORMATION

Torque-Tension Relationships for SAE J429 Grade Bolts

Nominal Thread Size	SAE J429 Grade 2			SAE J429 Grade 5			SAE J429 Grade 8		
	Clamp Load (lbs)	Tightening Torque		Clamp Load (lbs)	Tightening Torque		Clamp Load (lbs)	Tightening Torque	
		K = .15	K = .20		K = .15	K = .20		K = .15	K = .20
Unified Coarse Thread Series									
1/4-20	1,300	49 in-lbs	65 in-lbs	2,000	75 in-lbs	100 in-lbs	2,850	107 in-lbs	143 in-lbs
5/16-18	2,150	101	134	3,350	157	210	4700	220	305
3/8-16	3,200	15 ft-lbs	20 ft-lbs	4,950	23 ft-lbs	31 ft-lbs	6,950	32.5 ft-lbs	44 ft-lbs
7/16-14	4,400	24	30	6,800	37	50	9,600	53	70
1/2-13	5,850	36.5	49	9,050	57	75	12,800	80	107
9/16-12	7,500	53	70	11,600	82	109	16,400	115	154
5/8-11	9,300	73	97	14,500	113	151	20,300	159	211
3/4-10	13,800	129	173	21,300	200	266	30,100	282	376
7/8-9	11,425	125	166	29,435	321	430	41,550	454	606
1-8	15,000	187.5	250	38,600	482.5	640	54,540	680	900
Unified Fine Thread Series									
1/4-28	1,500	55 in-lbs	75 in-lbs	2,300	85 in-lbs	115 in-lbs	3,250	120 in-lbs	163 in-lbs
5/16-24	2,400	112	150	3,700	173	230	5,200	245	325
3/8-24	3,600	17 ft-lbs	22.5 ft-lbs	5,600	26 ft-lbs	35 ft-lbs	7,900	37 ft-lbs	50 ft-lbs
7/16-20	4,900	27	36	7,550	42	55	10,700	59	78
1/2-20	6,600	41	55	10,200	64	85	14,400	90	120
9/16-18	8,400	59	79	13,000	92	122	18,300	129	172
5/8-18	10,600	83	110	16,300	128	170	23,000	180	240
3/4-16	15,400	144	193	23,800	223	298	33,600	315	420
7/8-14	12,610	138	184	32,480	355	473	45,855	500	668
1-12	16,410	205	273	42,270	528	704	59,670	745	995

Clamp load estimated as 75% of proof load for specified bolts.

Torque values for 1/4 and 5/16 inch series are in inch-pounds. All other torque values are in foot-pounds.

Torque values calculated from formula $T = KDF$

where: $K=0.15$ for "lubricated" conditions

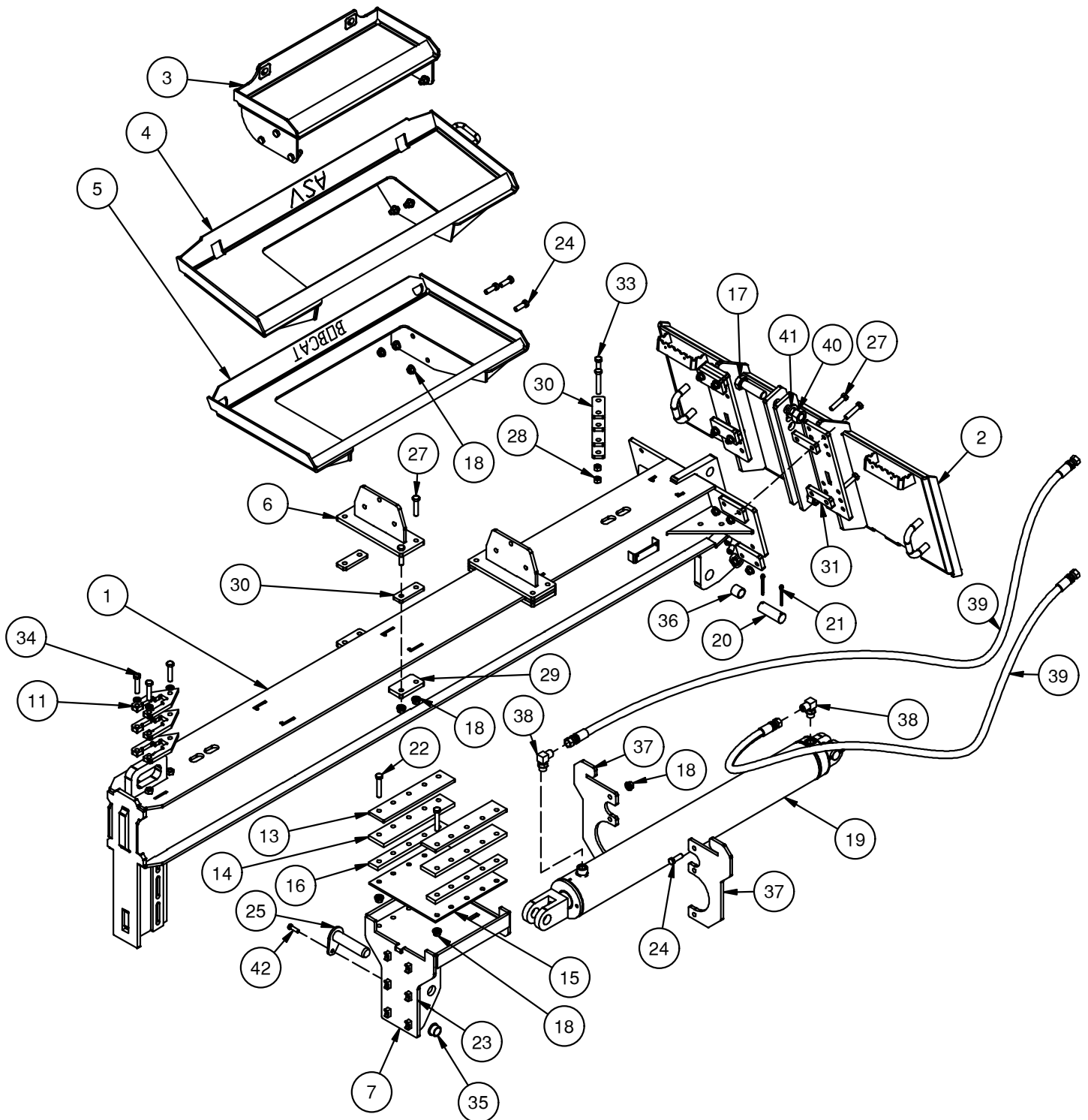
$K=0.20$ for "dry" conditions

PARTS INFORMATION

ITEM	QTY.	PART NUMBER	DESCRIPTION	STOCK NO.
1	1	312798	FRAME MAIN LS24 W/A	LS24 ONLY
	1	312799	FRAME MAIN LS36 W/A	LS36 ONLY
2	1	312796	MOUNT FULL SIZE LS TOP END W/A	FULL SIZE ONLY
3	1	400000	MOUNT FRAME TORO MINI W/A	MINI OPTION
4	1	400001	MOUNT FRAME ASV MINI W/A	MINI OPTION
5	1	400002	MOUNT FRAME BC MINI W/A	MINI OPTION
6	2	312795	MINI MOUNT ADAPTER W/A	MINI OPTION
7	1	312797	PUSH PLATE SLIDER W/A	
13	2	312782	PLASTIC SLIDER CLAMP Z	
14	2	312788	PLASTIC SLIDER TOP 2	
15	1	312786	PLASTIC SLIDER BOTTOM 3	
16	2	312787	PLASTIC SLIDER SIDE 3	
17	2	13467	BOLT HEX 1 X 3.5 NC GR8	FULL SIZE ONLY
18	24	167011	NUT FLG TOP-LOCK 1/2 NC GR8	LS24 MINI ONLY
	27	167011	NUT FLG TOP-LOCK 1/2 NC GR8	LS36 MINI ONLY
	18	167011	NUT FLG TOP-LOCK 1/2 NC GR8	L24 FULLSIZE ONLY
		167011	NUT FLG TOP-LOCK 1/2 NC GR8	L36 FULLSIZE ONLY
19	1	312752	CYLINDER 4.5 X 24 WELDED C-C	LS24 ONLY
	1	312750	CYLINDER 4.5 X 36 WELDED C-C	LS36 ONLY
20	2	313188	PIN CYLINDER 1 X 3.25	LS24 ONLY
	2	313197	PIN CYLINDER 1.25 X 3.25	LS36 ONLY
21	4	65127	PIN COTTER 3/16 X 2	BOTH LS24, LS36
22	10	15214	BOLT HEX 1/2 X 2.75 NC GR8 YZ	
23	1	37212	NUT HEX 3/8 RE3V LOCK	
24	8	15209	BOLT HEX 1/2 X 1.5 NC GR8 YZ	L24 (6) FOR MINI MOUNT ONLY
	11	15209	BOLT HEX 1/2 X 1.5 NC GR8 YZ	L36 (6) FOR MINI MOUNT ONLY
25	1	316026	PIN 1 X 5 W/A	LS24 ONLY
	1	300104	PIN 1.25 X 5.125 W/A	LS36 ONLY
26	3	33626	WASHER SPLIT LOCK 1/2	
27	11	15212	BOLT HEX 1/2 X 2.25 NC GR8	
28	2	37214	NUT HEX 1/2 REV LOCK	
29	4	312783	PLATE FLANGE MOUNT BOTTOM Z	
30	4	312785	PLATE SPACER TOP MOUNT 0.375 Z	
31	4	312784	PLATE SPACER TOP MOUNT 0.5 Z	USED ON TOP MOUNT ONLY
33	2	13215	BOLT HEX 1/2 X 3 NC GR 5	
34	3	13210	BOLT HEX 1/2 X 1.75 NC GR 5	
35	2	313191	BUSH 1.5 X 1.03 X 0.75 STEPPED Z	LS24 ONLY
36	1	313196	BUSH 1.25 X 1.02 X 1.13	LS24 ONLY
37	2	312759	PLATE CYL SUPPORT 36 PAINTED	LS36 ONLY
38	2	318389	ADPT ELB 8MB-10MJ-90	LS24 ONLY
	2	320144	ADPT ELB 10MB-10MJ-90	LS36 ONLY
39	2	312748	HOSE 1/2 X 98" 8FJX-10FJX	LS24 ONLY
	2	312757	HOSE 1/2 X 110" 8FJX-10FJX	LS36 ONLY

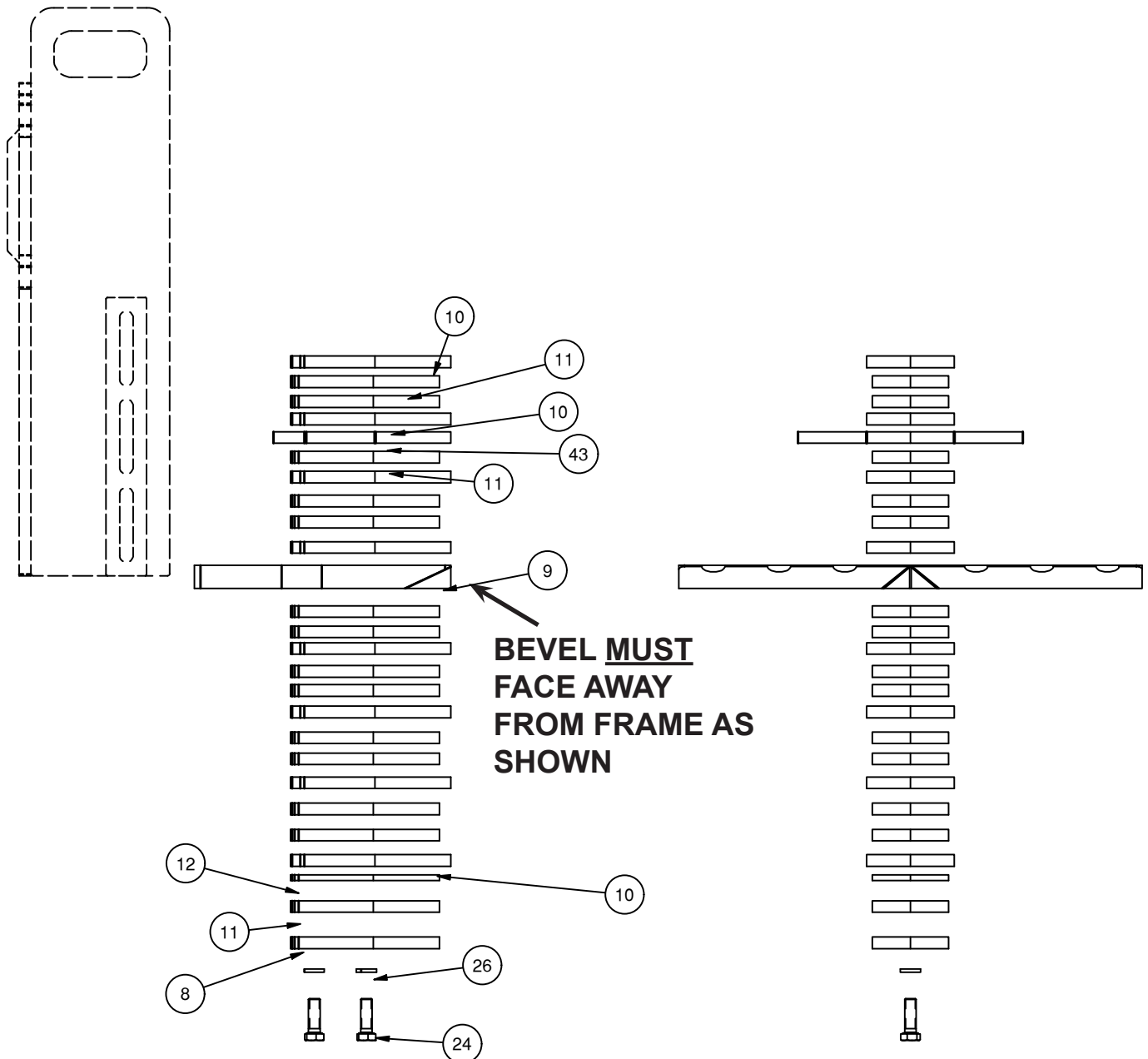
PARTS INFORMATION

40	2	36320	NUT HEX 1 NC GR5 Z	FULL SIZE ONLY
41	2	33636	WASHER SPLIT LOCK 1	FULL SIZE ONLY
42	1	13107	BOLT HEX 3/8 X 1.25 NC GR 5	



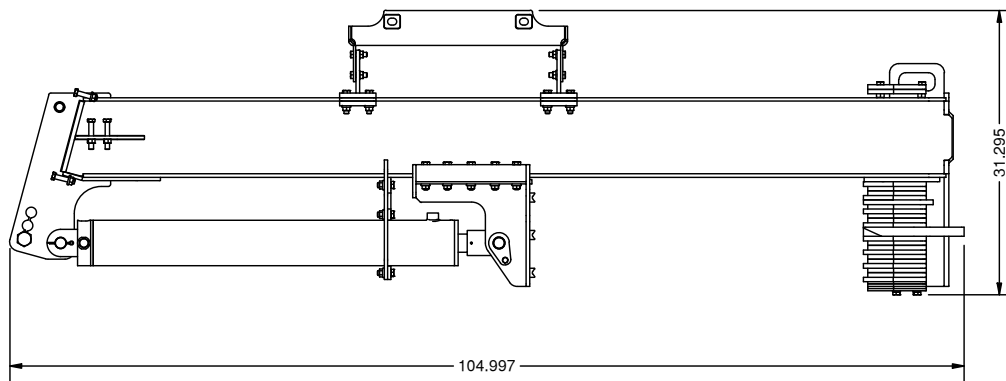
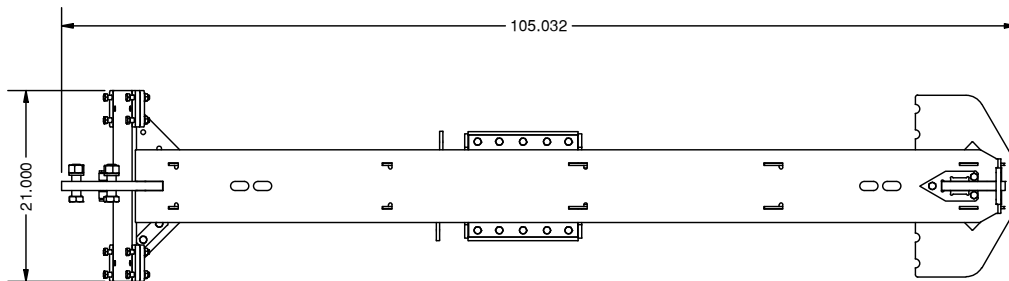
PARTS INFORMATION

ITEM	QTY.	PART NUMBER	DESCRIPTION	STOCK NO.
8	1	312779	PLATE WEDGE STACK CAP Z	
9	2	312778	PLATE WEDGE STACK 4 WAY Z	
10	8	312781	PLATE WEDGE STACK LARGE Z	
11	15	312780	PLATE WEDGE STACK SMALL Z	
12	1	312746	PLATE WEDGE STACK SHIM Z	
26	2	33626	WASHER SPLIT LOCK 1/2	
24	2	15209	BOLT HEX 1/2 X 1.5 GR8 YZ	THREAD LOCKER MUST BE USED
43	1	312756	PLATE WEDGE STACK KICKER Z	



GENERAL SPECS

Model	LS 24	LS 36
Hydraulic Cylinder	4" Bore, 24" Stroke	4.5" Bore, 36" Stroke
Wedge Force @ 2000 PSI	13 ton	15 ton
Wedge Force @ 2500 PSI	16 ton	20 ton
Wedge Force @ 3000 PSI	19 ton	25 ton
Wedge Force @ 3500 PSI	22 ton	28 ton
Wedge Force @ 4000 PSI	25 ton	32 ton
Operating Weight	720 lbs.	830 lbs.
Overall Width	45.2"	
Overall Length	82.6"	108.6"
Overall Height	25.4"	





LIMITED WARRANTY

Quick Attach Attachments, LLC warrants each new machine manufactured by us to be free from defects in material and workmanship for a period of twenty-four (24) months from date of delivery to the original purchaser.

Our obligation under this warranty is to replace free of charge, at our factory or Direct Outlet locations, any part proven defective within the stated warranty time limit.

All parts must be returned freight prepaid and adequately packaged to prevent damage in transit.

This warranty does not cover:

1. New products which have been operated in excess of rated capacities or negligence
2. Misuse, abuse, accidents or damage due to improperly routed hoses
3. Machines which have been altered, modified or repaired in any manner not authorized by our company
4. Previously owned equipment
5. Any ground engaging tools in which natural wear is involved, i.e. tooth tips, cutting teeth, etc
6. Normal maintenance
7. Fork tines
8. Hydraulic motors that have been disassembled in any manner

In no event will the Sales Representative, Direct Outlet, Quick Attach Attachments, LLC, or any other company affiliated with it or them be liable for incidental or consequential damages or injuries, including but not limited to the loss of profit, rental or substitute equipment or other commercial loss. Purchaser's sole and exclusive remedy being as provided here in above.

Quick Attach Attachments, LLC must receive immediate notification of defect and no allowance will be made for repairs without our consent or approval.

This warranty is in lieu of all other warranties, express or implied by law or otherwise, and there is no warranty of merchantability or fitness purpose.

No agent, employee, or representative of Quick Attach Attachments, LLC has any authority to bind Quick Attach Attachments, LLC to any warranty except as specifically set forth herein. Any of these limitations excluded by local law shall be deemed deleted from this warranty; all other terms apply.

This warranty may not be enlarged or modified in any manner except in writing signed by an executive officer of Quick Attach Attachments, LLC to improve its products whenever it is possible and practical to do so. Quick Attach Attachments, LLC reserves the right to make changes and or add improvements at any time without incurring any obligation to make such changes or add such improvements to products previously sold.

Quick Attach Attachments, LLC
P.O. Box 128 Alexandria, MN 56308
Phone (320) 759-1551
Fax (320) 759-1590

