

Operation & Maintenance Manual



EZ DigTM / Quick DigTM

Utility Digging Backhoe / Digging Backhoe

For

Skid Steer Loaders



Read this Manual Before Use

TABLE OF

SAFETY	3-4
SERIAL NUMBER/DECAL LOCATION	5-6
USER'S MOUNTING INSTRUCTIONS	7-8
OPERATING INSTRUCTIONS	9-12
ROUTINE MAINTENANCE	13-14
BOLT TORQUE INFORMATION	15
SET-UP ASSEMBLY	16-18
PARTS INFORMATION	19-26
GENERAL SPECIFICATIONS	27
NOTES	28-30
WARRANTY	31

REFERENCE INFORMATION

Write the serial number for your attachment in the spaces below. Always refer to this serial number when calling for service or parts.

Serial Number....._____

YOUR ATTACHMENT DEALER

ADDRESS:

PHONE:

NOTE: *Quick Attach Attachments LLC reserves the right to make improvements in design or changes in specifications at any time without notice and without incurring any obligations to install them on units previously sold.*

SAFETY

DO NOT use or perform maintenance on this machine until this manual has been read and understood. In addition, read the Operation and Maintenance Manual(s) pertaining to the attachment and the attachment carrier (“Loader”).

The user is responsible for inspecting the machine daily, and for having parts repaired or replaced when continued use of the machine would cause damage, excessive wear to other parts or make the machine unsafe for continued operation.

If an operating procedure, tool device, maintenance or work method not specifically recommended is used, you must satisfy yourself that it is safe for you and others. You must also ensure that the attachment will not be damaged or made unsafe by the procedures you choose.

Quick Attach Attachments LLC cannot anticipate every possible circumstance that might involve potential hazard. The safety messages found in this manual and on the machine are therefore not all inclusive.

Throughout this manual, reference may be made to the left hand (LH) and right hand (RH) side. These terms are used as viewed from the operator’s seat facing front.

Call Before You Dig
1-888-258-0808



The signal words **CAUTION**, **WARNING**, or **DANGER** are used to indicate hazards.

⚠ CAUTION Indicates a potentially hazardous situation which, if not avoided, may result in minor or moderate injury.

⚠ WARNING Indicates a potentially hazardous situation which, if not avoided, could result in death or serious injury.

⚠ DANGER Indicates a potentially hazardous situation which, if not avoided, will result in death or serious injury.

The word **IMPORTANT** is used in the text when immediate damage will occur due to improper technique or operation.

The word **NOTE** is used to convey information that is out of context with the manual text; special information such as specifications, techniques, reference information, and other information of a supplementary nature.

Improper operation can cause serious injury or death.

Pre-operation

- This machine is designed for digging, trenching, and excavating dirt, sand, and other materials. It can also be equipped to grapple and move objects. **NEVER** use this machine for any other purpose.
- Read the operator's manual for the "Skid Steer Loader." **NEVER** allow untrained people to operate.
- Operating instructions must be given to everyone before operating this attachment and at least once a year thereafter in accordance with OSHA regulations.
- **NEVER** exceed the maximum recommended input power or speed specifications for the attachment. Over-powering or over-speeding the attachment may cause personal injury and/or machine damage.
- Keep all shields, guards, and covers in place.
- Do not modify equipment or add attachments that are not approved by Quick Attach Attachments LLC.
- Use adequate safety warning lights and devices as required by local regulations. Obey all local laws and regulations regarding machine operation on public property. Always call before you dig (1-888-258-0808). When you call, you will be directed to a location in your state/city for information about buried lines (electric, telephone, cable TV, water, sewer, gas, etc.).

Operation

- Hydraulic connections may be hot after use. Use gloves if connecting or disconnecting after use.
- Check and be sure all operating controls are in neutral before starting the engine.
- Keep people away from loader and attachment when in use. This attachment lifts objects and has moving parts. **NEVER** lift load directly over people – load could fall.

Operation (continued)

- To avoid electric shock or electrocution, **NEVER** operate the attachment near overhead power lines.
- **NEVER** operate near embankments or terrain that is so steep that rollover could occur.
- Always stay in the operator position when using the attachment.
- Before leaving the operators position, disengage hydraulic drive, lower the attachment to rest flat on the ground, stop engine, set park brake, relieve hydraulic pressure to attachment, and wait for all motion to stop.
- **NEVER** place hands near moving parts or clear debris while engine is running.
- **NEVER** lift people.

Avoid High Pressure Fluids Hazard



- Escaping fluid under pressure can penetrate the skin causing serious injury.
- Avoid the hazard by relieving the pressure before disconnecting hydraulic lines.
- Use a piece of paper or cardboard, NOT BODY PARTS, to check for suspected leaks. Wear protective gloves and safety glasses or goggles when servicing or performing maintenance on hydraulic systems.
- If an accident occurs, see a doctor immediately. Any fluid injected into the skin must be surgically removed within a few hours or gangrene may result.

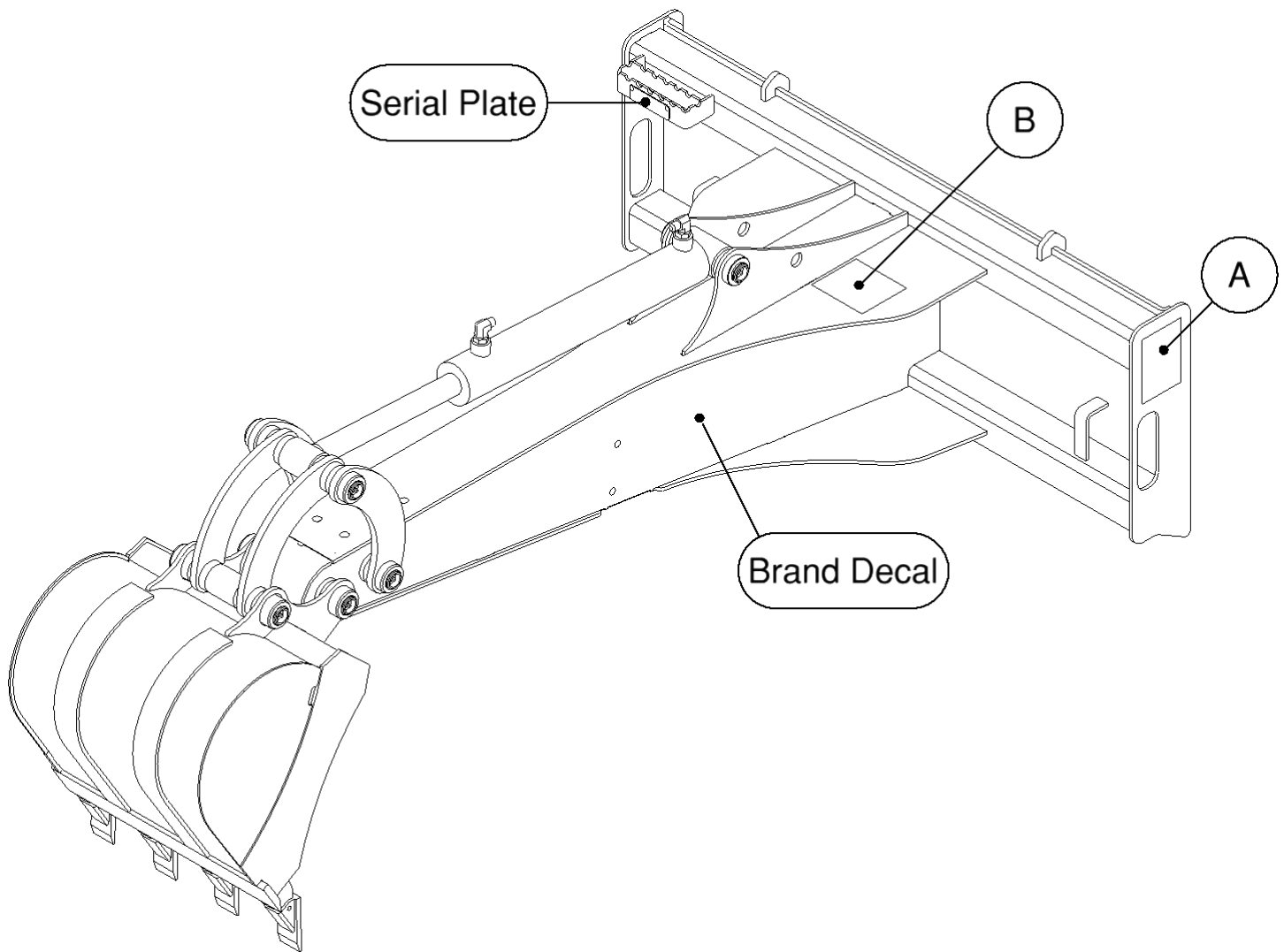
Maintenance

- **NEVER** make adjustments, lubricate, clean, or perform any service on the machine while it is in operation.
- Make sure the attachment is serviced on a daily basis. Improper maintenance can cause serious injury or death in addition to damage to the attachment and/or your equipment.

SERIAL NUMBER AND SAFETY DECAL LOCATIONS

Serial Number Location:

It is important to refer to the serial number of the attachment when making repairs or ordering parts. Early or later models (identification made by serial number) may use different parts, or it may be necessary to use different procedures in doing a specific operation.



SERIAL NUMBER AND SAFETY DECAL LOCATIONS

Safety Decals Locations:

The locations of the safety decals are shown. If these decals are missing, damaged, or painted over they must be replaced. Call Quick Attach Attachments LLC (320-759-1551) for replacement decals.

(A)

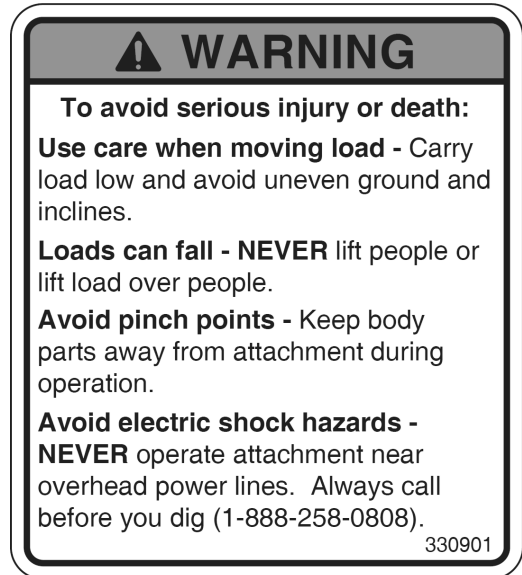


Part number: 200001

Location: On top of mount frame

Quantity: 1

(B)



Part number: 330901

Location: On top of mount frame

Quantity: 1

Small Brand Decal

Location: On each side of boom

Quantity: 2

USER'S MOUNTING INSTRUCTIONS

After the initial set-up assembly is completed, use the following procedure to mount the attachment to the loader for user operation.

⚠ WARNING Coupler wedges or pins must extend through holes in attachment. Levers must be fully down and locked. Failure to secure wedges or pins can allow the attachment to come off and cause injury or death.



1. Use the step, safety treads, and grab handles to get on and off the loader and attachment.

2. Sitting in the operator's seat, lower seat bar (if so equipped) and fasten the seat belt.

3. Drive the loader to the rear of the attachment. Put the loader quick attach coupler into the attachment mounting bracket.

4. Tilt the loader coupler backward a small amount until it is fully engaged in the attachment mounting bracket.

5. Stop the engine and engage the park brake.

6. Secure the coupler locking mechanism that attaches the attachment to the loader.



USER'S MOUNTING INSTRUCTIONS

7. Connect the hydraulic quick couplers from the attachment to the loader.

IMPORTANT: Wipe the ends of the hydraulic quick couplers (both lead and loader) with a rag to remove any possible contamination. Contamination can cause hydraulic components to fail and is not covered under warranty.

IMPORTANT: Make sure the quick couplers are fully engaged. If the quick couplers do not fully engage, check to see that the couplers are the same size and brand. Do not force the quick couplers together.

NOTE: See the loader's operator's manual for auxiliary hydraulic specifications and connection instructions.

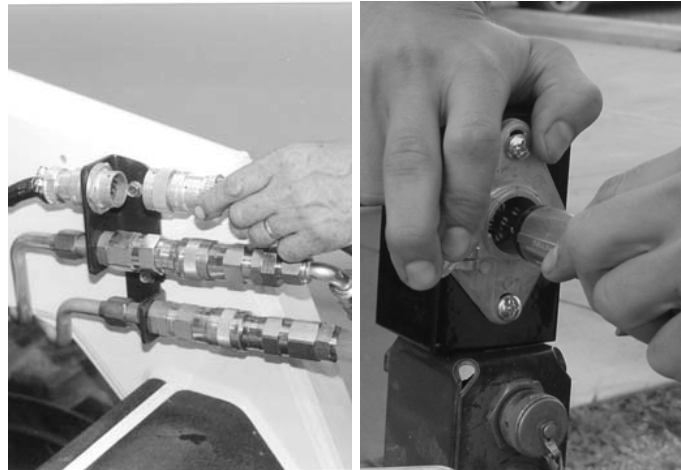
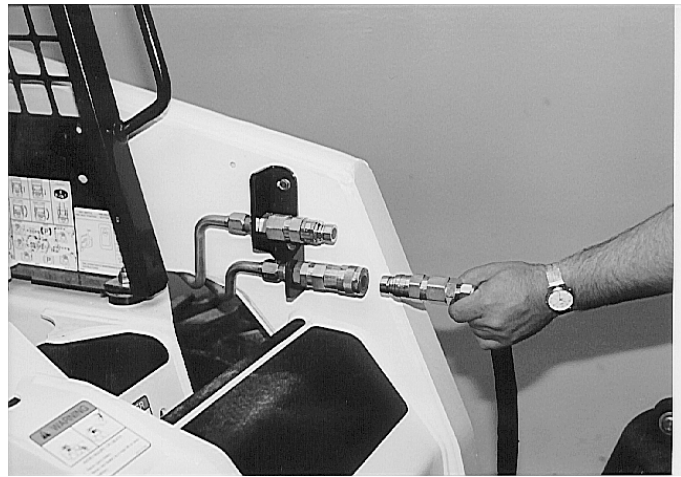
NOTE: Attachment is shipped with 8FJX (1/2" Female JIC Swivel) fittings on the ends of the lead hoses.

8. For swinging skid digger models, connect the wire harness to the loader's wire harness receptacle. (Disregard if a pistol grip controller is supplied with the attachment.)
9. Make sure the hoses are properly routed to fit your specific loader. If the hoses are not routed correctly, hoses may get pinched or rub on tires. Be sure to check the hose routing through the full range of intended motion of the attachment before operating it.

More than one routing may be acceptable depending on the loader. Pick the routing that best suits your loader.

IMPORTANT: Proper hose routing is the responsibility of the owner and/or operator. Pinched or stretched hoses are not covered under warranty.

Mounting is now complete and the attachment is ready for operation. Use reverse order of above instructions to dismount the attachment from the loader.



OPERATING INSTRUCTIONS



⚠ CAUTION To avoid serious injury or death from tipover, keep loader away from holes and trenches that could cave in.

⚠ CAUTION To avoid injury or death due to tipover or falling load, carry load as low as possible. **NEVER** allow any person to be directly under attachment or load at any time.

With the operator in the seat of the loader, the seat belt fastened, and the seat bar lowered (if so equipped), start the engine.

Digging with the Boom

1. Use the loader boom lift and tilt functions and the bucket cylinder to set the bucket angle for digging.
2. Tilt the mount plate forward to pull the bucket through the soil until the bucket is full.
3. Curl the bucket in while raising the boom out of the soil.



Digging with the Bucket

1. Use the loader boom lift and tilt functions to set the bucket angle for digging.
2. Curl the bucket out, and lower the boom and tilt the mounting plate to force the bucket into the ground.
3. Use the boom to force the bucket further into the ground and curl the bucket in until the bucket is full.
4. Raise the boom and dump the bucket. Increase depth 3" to 6" with each pass.



Emptying the Bucket

1. Raise the loader boom to lift the bucket above the ground.
2. Turn the skid steer or swing the attachment arm until the bucket is over the dumping area.
3. Curl the bucket out to empty the soil.
4. Turn the skid steer or swing the attachment arm until the bucket is over the digging area and resume digging.

OPERATING INSTRUCTIONS

Trenching

1. Completely extend the boom and bucket.
2. Use either the boom method or the bucket method to dig the beginning of the trench.
3. Once the beginning of the trench is dug to the desired depth, drive the skid steer backwards until the fully extended boom and bucket reach just beyond the end of the dug section.
4. Dig the next section of the trench in the same manner, and repeat the process until the full desired length of the trench has been dug.



Filling Holes

1. Use either the boom or bucket method to pick up material from a stockpile area.
2. Turn the skid steer or swing the attachment arm until the bucket is over the hole to be filled.
3. Empty the bucket into the hole.
4. Repeat the process until the hole is filled.



Excavating

1. Use either the boom or bucket method to excavate the hole.
2. Dump the bucket far enough away from the hole to prevent tailings from falling back into the hole.
3. If loading a truck, use a truck with low sides.



OPERATING INSTRUCTIONS

Loads

The skid digger can be used to lift and place lines, pipes, rocks, and other loads into trenches or excavations if it is equipped with the optional mechanical thumb.

Always position the skid steer at right angles to the trench or excavation when moving loads.

Mechanical Thumb Operation

The skid digger can be equipped with an optional mechanical thumb to serve as a backstop for grappling objects. To operate:

1. Use adjustable pin to set thumb at desired position.
2. Curl the bucket out and position the skid steer and attachment so that the object to be grappled is between the bucket and the thumb.
3. Curl the bucket in to grapple the object against the thumb.
4. Lift and move the object to the desired location.

⚠ CAUTION If the grappled object becomes unstable or unbalanced, lower the attachment to the ground and repeat the grappling process until the object being lifted remains stable the entire time it is being lifted and moved. Always lower the object to the ground before opening the bucket to release it.

⚠ CAUTION To avoid injury or death, do not allow any person to be directly under the attachment or load at any time.

⚠ CAUTION Carry load as low as possible to avoid serious injury or death from tipping or falling load.

5. Lower the object to rest in the desired position and curl the bucket out to release the object.



OPERATING INSTRUCTIONS

Operating the Swing Function

On swinging skid digger models, the skid digger is equipped with an electrically actuated diverter valve, which can send hydraulic oil to one of two paths. The primary (default) path is to the bucket curl cylinder. The secondary path is to the swing cylinder.

NOTE: Skid steer loader controls vary from machine to machine. Read the loader's operator's manual to become familiar with the loader control functions. Certain loaders may require a special harness jumper wire to operate correctly.

To operate the swing function:

1. **Push and HOLD** the button that energizes the diverter valve (usually on the left handle).
2. While holding the button, operate the auxiliary hydraulics in the forward and reverse directions to swing the skid digger boom side to side.
3. Release the button to de-energize the diverter valve and resume bucket curl operation.

NOTE: If the attachment does not swing, experiment with other buttons until the button energizing the diverter valve is found. If no button is found to energize the diverter valve and activate the swing function, use a 12 volt test light to identify the correct button and confirm that power is reaching the valve coil.

NOTE: Certain Bobcat® loaders will require the P-to-K jumper wire to be connected on the 14-pin harness. These jumper wires can be found on the 14-pin end of the attachment wire harness. The connectors are color-coded as follows:

Connector	Pin
WHT/BLK Wire Female	K
RED/BLK Wire Male	L
GRN/BLK Wire Male	P
Black Wire Male	A (JD® Ground, etc.)
Blue Wire Male	B (Bobcat® Ground)
Black Wire Female	Connector Ground



PUSH AND HOLD TO ENERGIZE DIVERTER



**PUSH AND HOLD TO ENERGIZE DIVERTER
(OPTIONAL PISTOL GRIP HARNESS SHOWN)**





ROUTINE MAINTENANCE

⚠ WARNING Lower the attachment to rest flat on the ground, shut down the engine, relieve the hydraulic pressure to the attachment, set the park brake, and wait for all motion to stop before leaving the operator's seat to perform service of any kind.

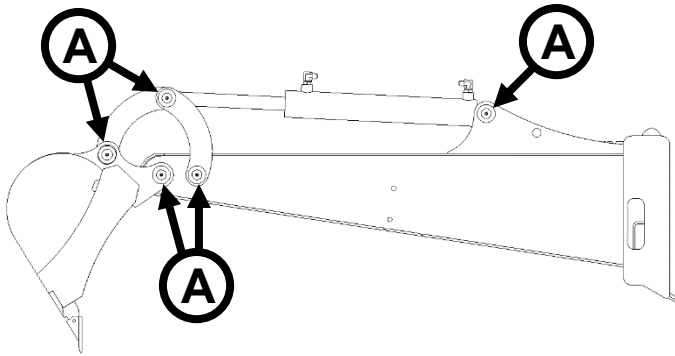
It is the operator's responsibility to make daily inspections of the loader and attachment for damage, loose bolts, fluid leaks, or anything else that could cause a potential service or safety problem. Preventive maintenance is the easiest and least expensive type of maintenance.



IMPORTANT: Bolts can loosen after initial usage. After the first hour of operation check all bolts.

LUBRICATION

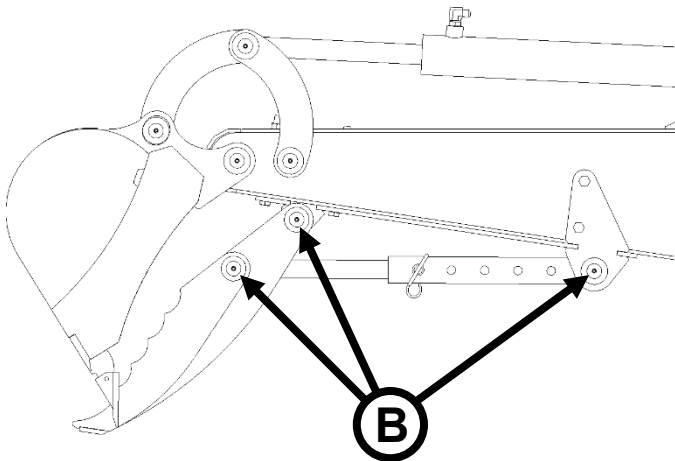
Lubrication Legend	 Multipurpose spray lube	 No. 2 Lithium base gun grease	 Clean engine oil	 Intervals at which lubrication is required



Use No. 2 lithium base gun grease when lubricating all attachment grease fittings.



		8
--	---	----------

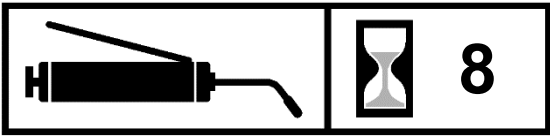
On all units, grease (5) bucket linkage pins [A] every **8 hours** of operation.



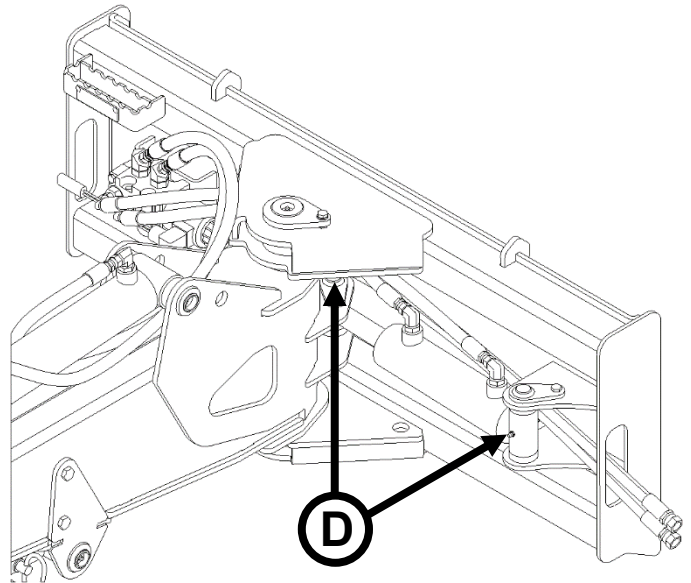
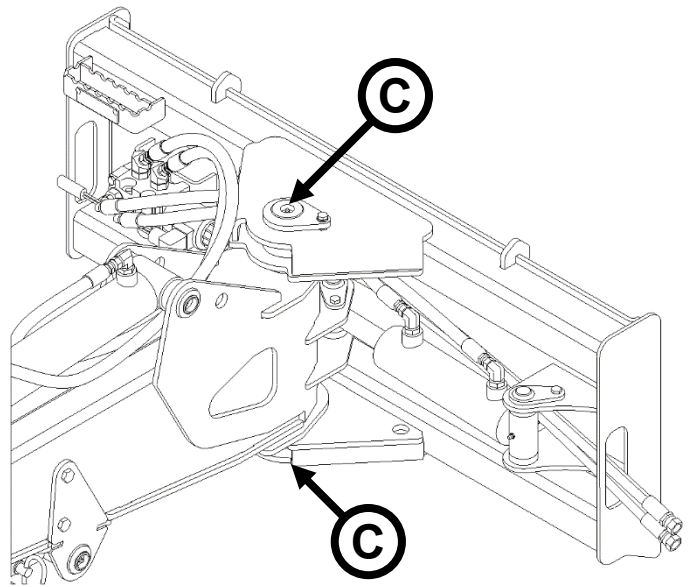
		8
--	---	----------

On units with optional mechanical thumb installed, grease (3) thumb linkage pins [B] every **8 hours** of operation.

ROUTINE MAINTENANCE



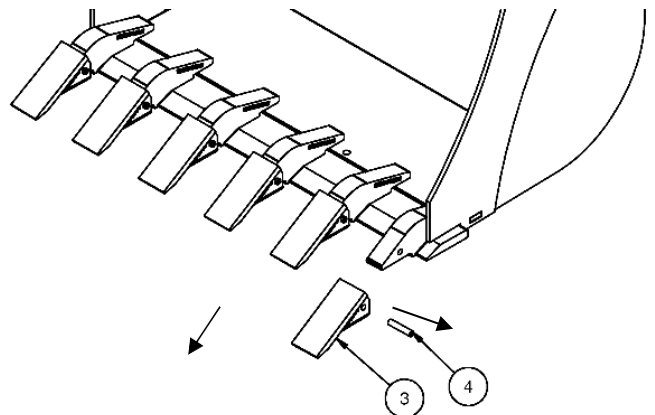
On swinging skid digger units, grease center pivot pins (top and bottom) [C] and swing cylinder pivots [D] every **8 hours** of operation.



Replacing Bucket Teeth

1. Securely support the attachment using blocks or jack stands so that there is access to the teeth that need to be replaced.
2. Using a punch and hammer, pound the roll pin out of the old tooth and remove the tooth.
3. Align the new tooth with the mounting hole on the bucket, and use a hammer to pound a new roll pin into the tooth to secure it to the bucket.

IMPORTANT: When replacing teeth, always use a new roll pin with each new tooth.



BOLT TORQUE INFORMATION

Torque-Tension Relationships for SAE J429 Grade Bolts

Nominal Thread Size	SAE J429 Grade 2			SAE J429 Grade 5			SAE J429 Grade 8		
	Clamp Load (lbs)	Tightening Torque		Clamp Load (lbs)	Tightening Torque		Clamp Load (lbs)	Tightening Torque	
		K = .15	K = .20		K = .15	K = .20		K = .15	K = .20
Unified Coarse Thread Series									
1/4-20	1,300	49 in-lbs	65 in-lbs	2,000	75 in-lbs	100 in-lbs	2,850	107 in-lbs	143 in-lbs
5/16-18	2,150	101	134	3,350	157	210	4,700	220	305
3/8-16	3,200	15 ft-lbs	20 ft-lbs	4,950	23 ft-lbs	31 ft-lbs	6,950	32.5 ft-lbs	44 ft-lbs
7/16-14	4,400	24	30	6,800	37	50	9,600	53	70
1/2-13	5,850	36.5	49	9,050	57	75	12,800	80	107
9/16-12	7,500	53	70	11,600	82	109	16,400	115	154
5/8-11	9,300	73	97	14,500	113	151	20,300	159	211
3/4-10	13,800	129	173	21,300	200	266	30,100	282	376
7/8-9	11,425	125	166	29,435	321	430	41,550	454	606
1-8	15,000	187.5	250	38,600	482.5	640	54,540	680	900
Unified Fine Thread Series									
1/4-28	1,500	55 in-lbs	75 in-lbs	2,300	85 in-lbs	115 in-lbs	3,250	120 in-lbs	163 in-lbs
5/16-24	2,400	112	150	3,700	173	230	5,200	245	325
3/8-24	3,600	17 ft-lbs	22.5 ft-lbs	5,600	26 ft-lbs	35 ft-lbs	7,900	37 ft-lbs	50 ft-lbs
7/16-20	4,900	27	36	7,550	42	55	10,700	59	78
1/2-20	6,600	41	55	10,200	64	85	14,400	90	120
9/16-18	8,400	59	79	13,000	92	122	18,300	129	172
5/8-18	10,600	83	110	16,300	128	170	23,000	180	240
3/4-16	15,400	144	193	23,800	223	298	33,600	315	420
7/8-14	12,610	138	184	32,480	355	473	45,855	500	668
1-12	16,410	205	273	42,270	528	704	59,670	745	995

Clamp load estimated as 75% of proof load for specified bolts.

Torque values for 1/4 and 5/16 inch series are in inch-pounds. All other torque values are in foot-pounds.

Torque values calculated from formula $T = KDF$

where: $K=0.15$ for "lubricated" conditions

$K=0.20$ for "dry" conditions

SET-UP ASSEMBLY

Wire Harness Installation

NOTE: If the loader is equipped with an Attachment Control package, the appropriate harness should be installed from the factory.

If the attachment was ordered with the pistol grip control harness, follow these instructions:

1. Install the control handle on either steering lever, whichever you prefer, with (2) hose clamps.

IMPORTANT: The control handle bracket can be positioned several different ways. We recommend it be positioned as shown.

2. Put a cable tie around the wiring harness and the steering lever.

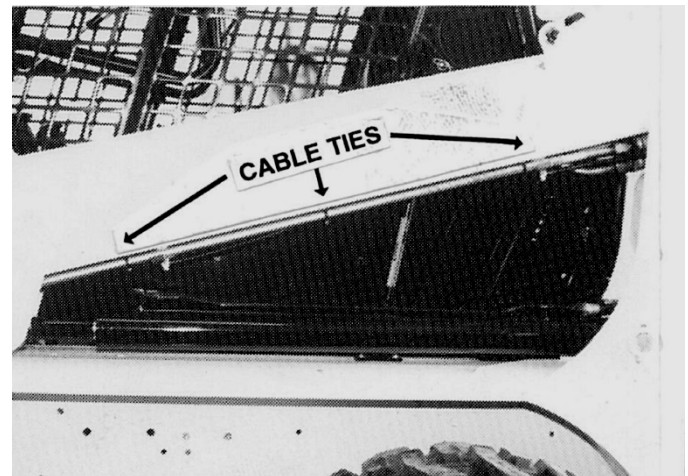
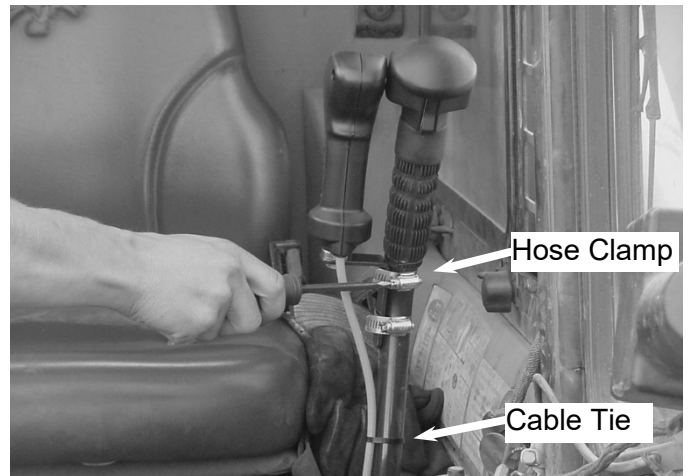
3. Install the wiring harness receptacle bracket on either the loader arm or near the hydraulic quick couplers.

IMPORTANT: It may be necessary to make an adapter bracket in order to attach the wire harness to the loader.

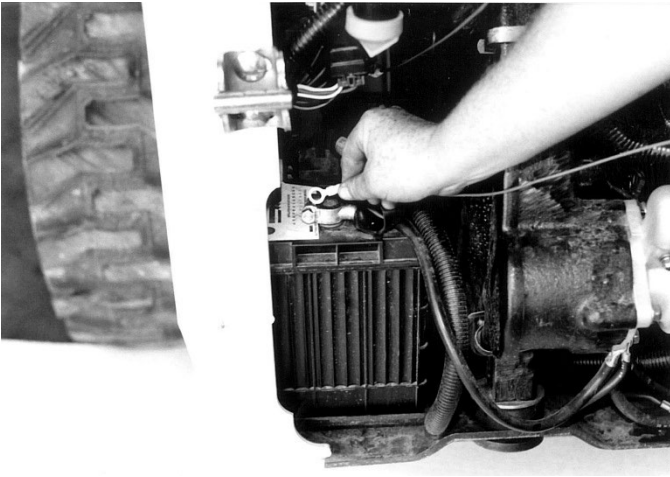
4. Route the wiring harness back along the tube lines on the loader arms and fasten with cable ties.

5. Open the rear door. Pull the excess wiring harness into the engine compartment.

6. Raise the operator cab. (See loader's operator's manual for the correct procedure.)



SET-UP ASSEMBLY



7. Connect the red fused wire to the positive battery terminal or to a suitable accessory wire with a minimum rating of 5 amps. Route the wiring along the loader main frame toward the front of the loader.

Connect the black wire from the harness to a frame ground.



8. Fasten the control handle wiring harness connector to the main wiring harness connector.

IMPORTANT: Secure the wiring harness in place with plastic cable ties, making sure it is clear of extra hot areas or any moving parts on the engine or loader. Pinched, stretched, or melted wire harnesses are not covered under warranty.

9. Lower the cab. (See loader's operator's manual for the correct procedure.)

NOTE: Be sure the control handle wiring harness is properly positioned as the cab is lowered.

SET-UP ASSEMBLY

Mechanical Thumb Installation

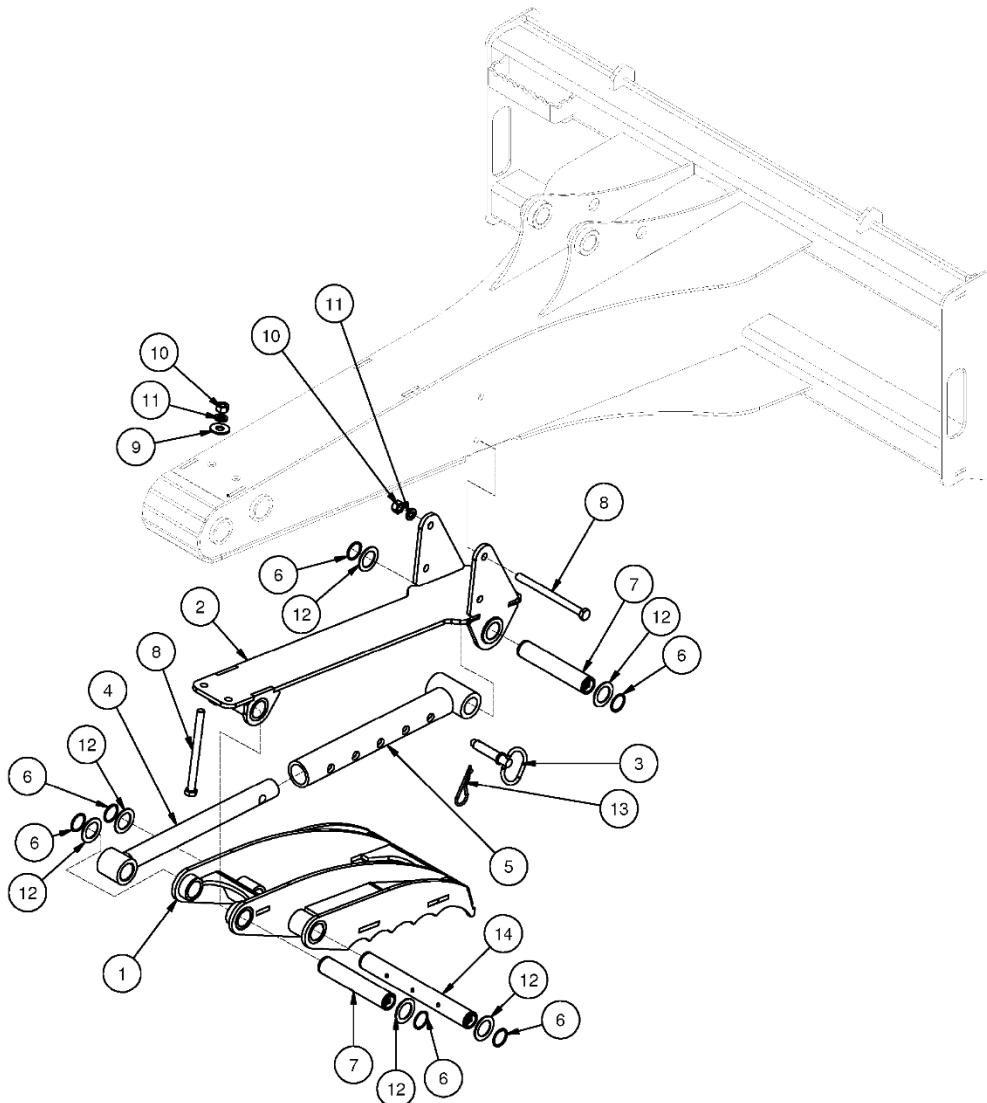
3. Attach the thumb mount frame [2] to the dipper frame using the four hex bolts [8].

NOTE: The two bolts toward the front of the dipper frame get flat washers in addition to lock washers and hex nuts, while the bolts toward the rear of the frame **do not** get flat washers.

4. Slide the smaller end [4] of the mechanical thumb support into the larger end [5] and use the hitch pin [3] to secure it in place. Secure the hitch pin [3] in place with the pin clip [13].
5. Connect the larger end of the thumb support [5] to the thumb mount frame [2]. Insert one of the short pins [7] to connect the thumb support to the mount frame. Install the washer [12] followed by the snap ring [6] over the LH side of the pin. Repeat for the RH side.

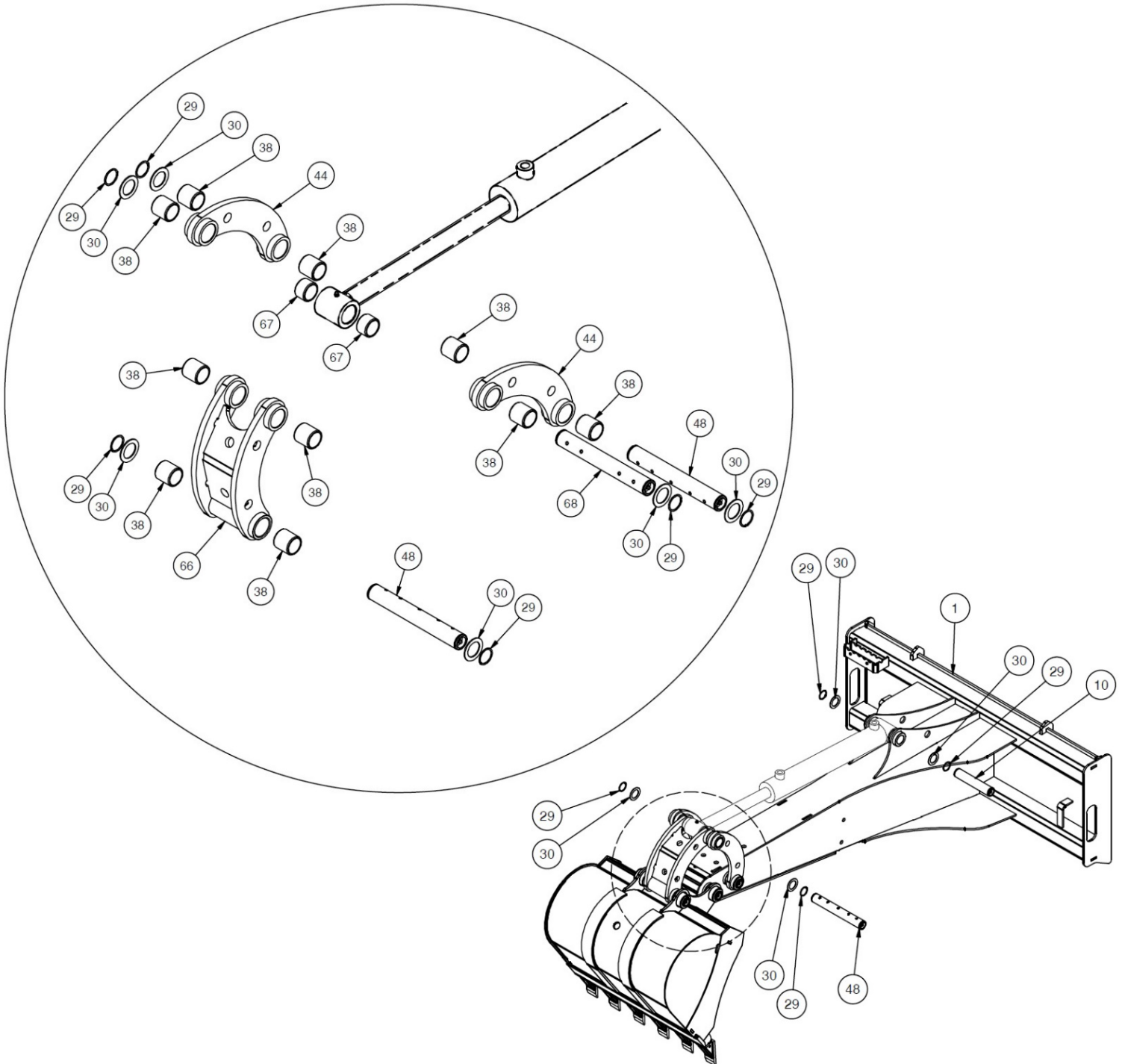
1. Connect the rear hole on the backhoe thumb [1] to the smaller end of the thumb support [4]. Insert the long pin [14]. Install the washer [12] followed by the snap ring [6] over the LH side of the pin. Repeat for the RH side.
2. Connect the front hole in the backhoe thumb [1] to the front hole in the thumb mount frame [2]. It may be necessary to adjust the length of the thumb support to line up the holes. Insert the other short pin [7]. Install the washer [12] followed by the snap ring [6] over the LH side of the pin. Repeat for the RH side.

IMPORTANT: Grease all mechanical thumb pins prior to use. Refer to "Routine Maintenance" on page 13.



PARTS INFORMATION

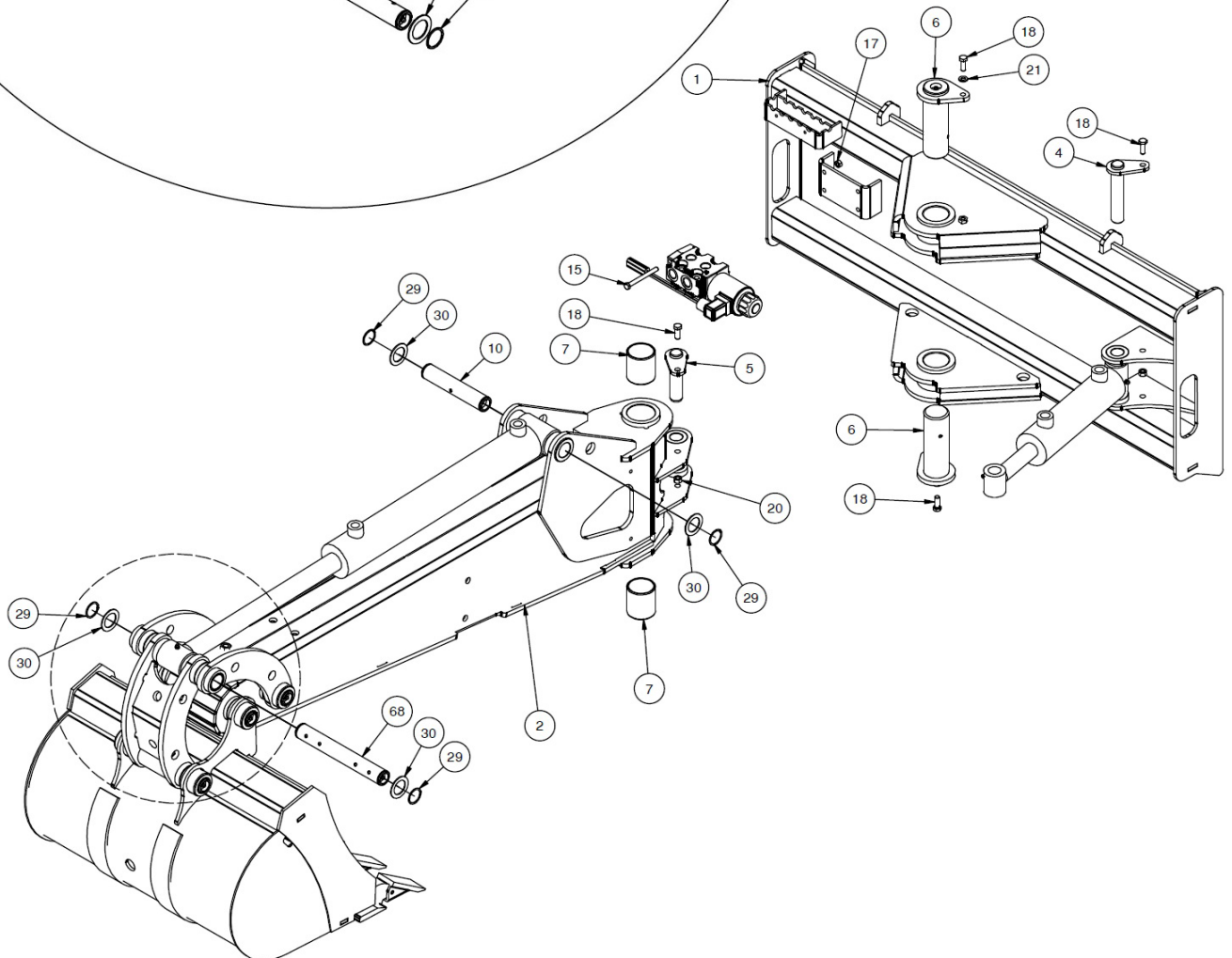
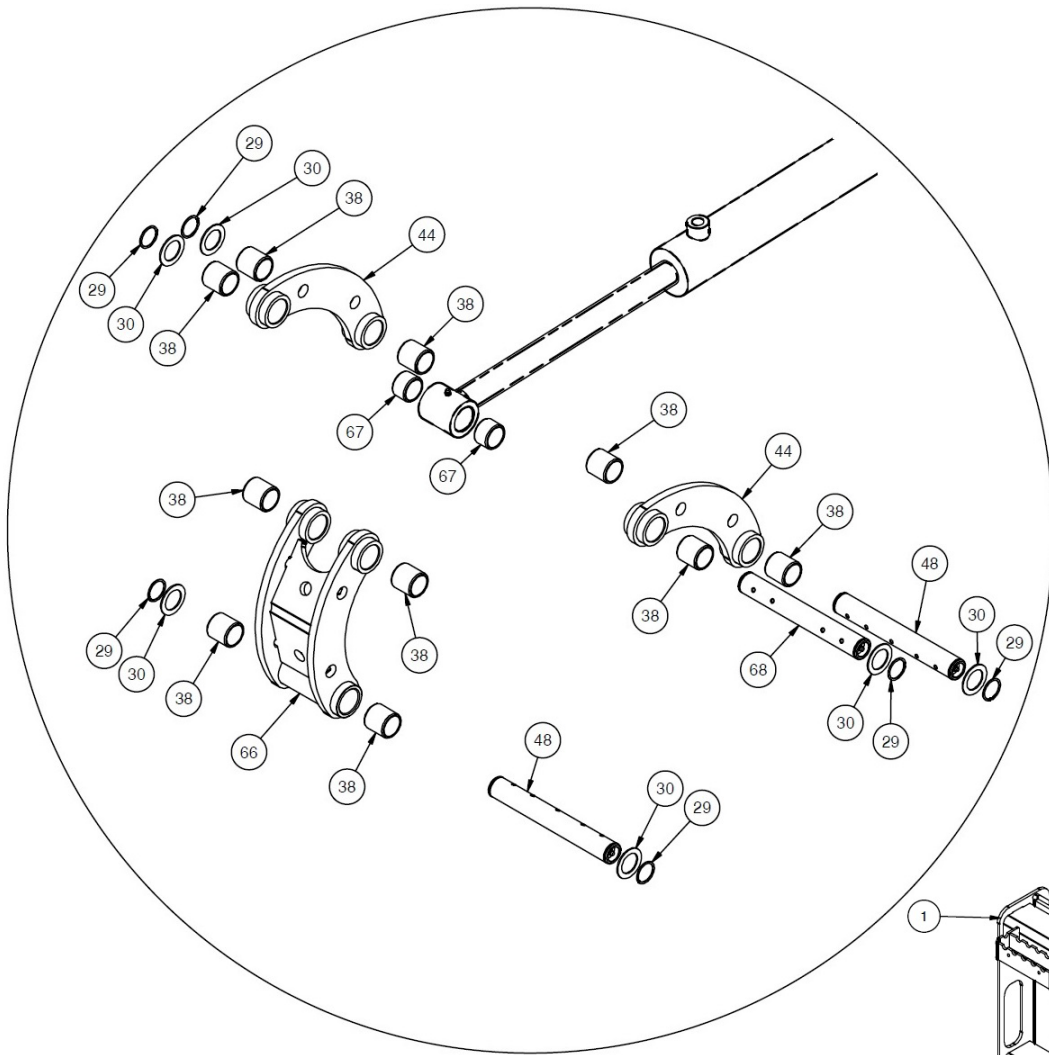
ITEM	QTY	PART NO.	DESCRIPTION	STOCK NO.
1	1	317800	FRAME DIPPER W/A	
10	1	318358	PIN 1.25 X 6.25 SNP RNG GRS	
11	3	317891	PIN 1.25 X 9 SNP RNG GRS	
29	10	28280	RING SNAP EXT 1.25 X .050	
30	10	33465	WASHER MB 1-1/4 14GA NARROW	
38	12	317895	BUSH SPRING 1.50 X 1.25 X 1.50	
44	2	317801	LINK DIPPER W/A	
66	1	318391	LINK BUCKET LINKAGE W/A	
67	2	318337	BUSH SPRING 1.50 X 1.25 X 1.00	
68	1	318343	PIN 1.25 X 9 SNP RING 4 PORT GRS	



PARTS INFORMATION

ITEM	QTY	PART NO.	DESCRIPTION	STOCK NO.
1	1	317803	FRAME SWING W/A	
2	1	317810	FRAME SWING DIPPER WA	
3	2	317801	LINK DIPPER W/A	
4	1	316026	PIN 1 X 5 W/A	
5	1	400041	PIN 1 X 4 W/A	
6	2	317885	PIN 2.00 X 5.75 WA	
7	2	317881	BUSH SPRING 2.25 X 2.00 X 2.50	
10	1	318358	PIN 1.25 X 6.25 GREASE	
15	2	13066	BOLT HEX	5/16 X 3-1/4 NC GR 5
17	2	37211	NUT HEX LOCK	5/16 NC GR 5
18	4	103116	BOLT HEX	3/8 X 1 NC GR 5
20	2	37212	NUT HEX LOCK	3/8 NC GR 5
21	2	103880	WASHER LOCK	3/8"
29	10	28280	RING SNAP EXT 1.25 X .050	
30	10	33465	WASHER MB 1-1/4 14GA NARROW	
38	12	317895	BUSH SPRING 1.50 X 1.25 X 1.50	
48	3	317891	PIN 1.25 X 9 SNP RNG GRS	
66	1	318391	LINK BUCKET LINKAGE W/A	
67	2	318337	BUSH SPRING 1.50 X 1.25 X 1.00	
68	1	318343	PIN 1.25 X 9 SNP RING 4 PORT GRS	

PARTS INFORMATION

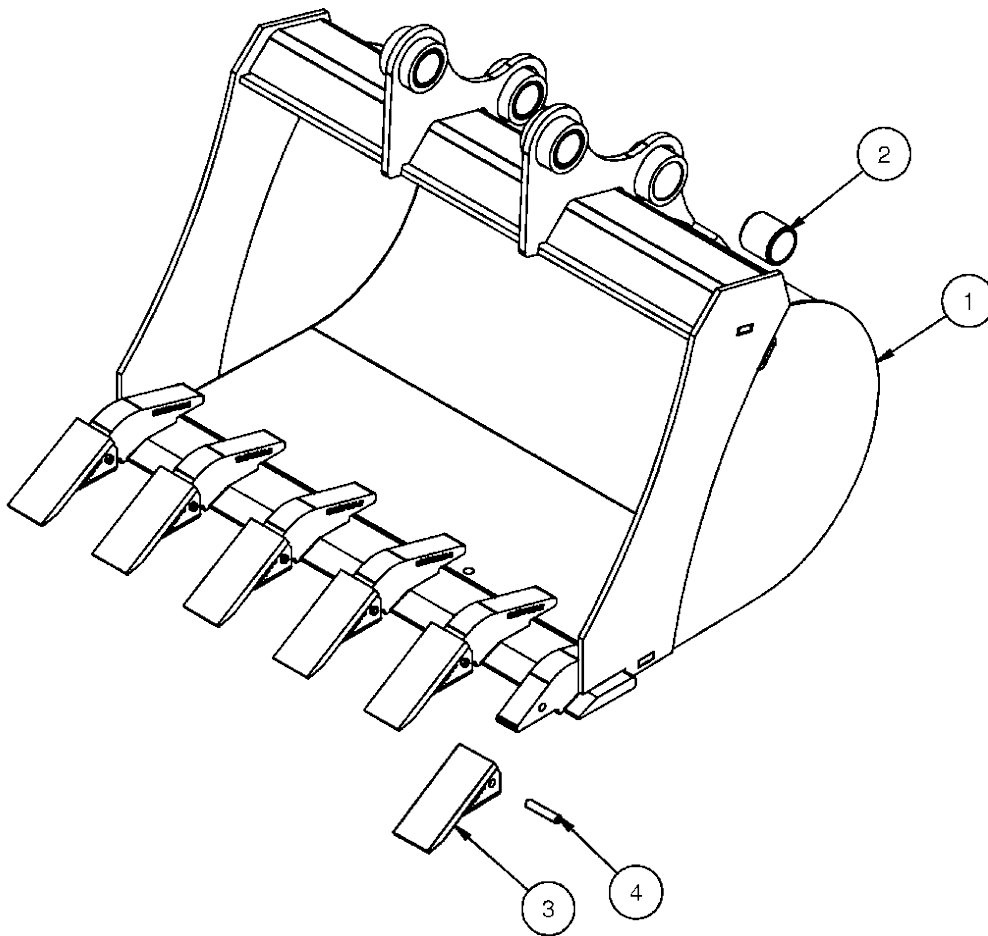


PARTS INFORMATION

ITEM	QTY	PART NO.	DESCRIPTION	STOCK NO.
1	1	313467	VALVE 6-WAY	SWING FRAME ONLY
2	1	313468	HRN ADPT METPAK TO DIN	SWING FRAME ONLY
3	1	318873	CYLINDER 2.5 X 16 B-B	REPLACED 317854
	1	317854	CYLINDER 2.5 X 16 B-B	OBSOLETE REPLACED BY 318873
4	1	400015	CYLINDER 2.5 X 6 W/BUSHINGS	SWING FRAME ONLY
5	2	300779	ADPT ELB 8MB-6MJ-90-.125	SWING FRAME ONLY
6	2	320089	ADPT ELB 8MB-6MJ-90	
7	4	201522	ADPT STR 10MB-6MJ	SWING FRAME ONLY
8	2	300778	ADPT ELB 10MB-6MJ-45	SWING FRAME ONLY
9	2	317849	HOSE 3/8 X 110 6FJX-8FJX	SOLID FRAME ONLY
10	2	317867	HOSE 3/8 X 55 6FJX-6FJX (ROD TO B1)	SWING FRAME ONLY
11	2	317853	HOSE 3/8 X 98 8FJX-6FJX-90	SWING FRAME ONLY
12	1	317866	HOSE 3/8 X 27 6FJX-6FJX-90 (ROD TO C1)	SWING FRAME ONLY
13	1	317863	HOSE 3/8 X 35 6FJX-6FJX90 (BASE TO C2)	SWING FRAME ONLY

PARTS INFORMATION

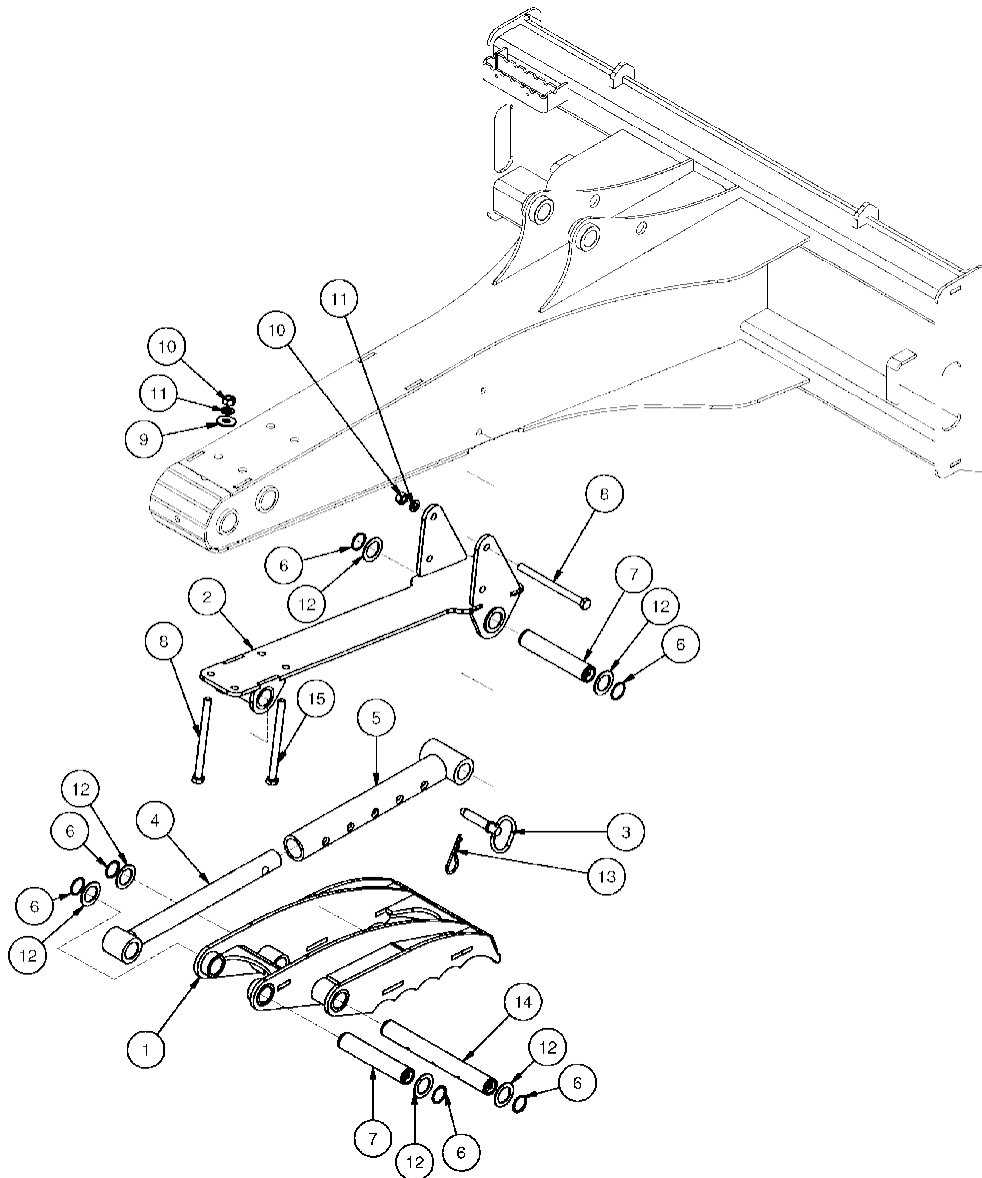
PART			BUCKET SIZE / PART QTY					
ITEM	PART NO.	DESCRIPTION	9" BUCKET	12" BUCKET	15" BUCKET	18" BUCKET	24" BUCKET	24" DITCHING BUCKET
1	317804	BUCKET 9 W/A	1					
	317805	BUCKET 12 W/A		1				
	317806	BUCKET 15 W/A			1			
	317807	BUCKET 18 W/A				1		
	317808	BUCKET 24 W/A					1	
	317809	BUCKET DITCHING 24 W/A						1
	318886	BUCKET DITCHING 12 W/A		1				
2	317895	BUSH 2.00 X 1.50 X 1.50	4	4	4	4	4	4
3	400518	TOOTH BUCKET MINI	3	3	4	4	6	
4	400519	PIN TOOTH MINI	3	3	4	4	6	



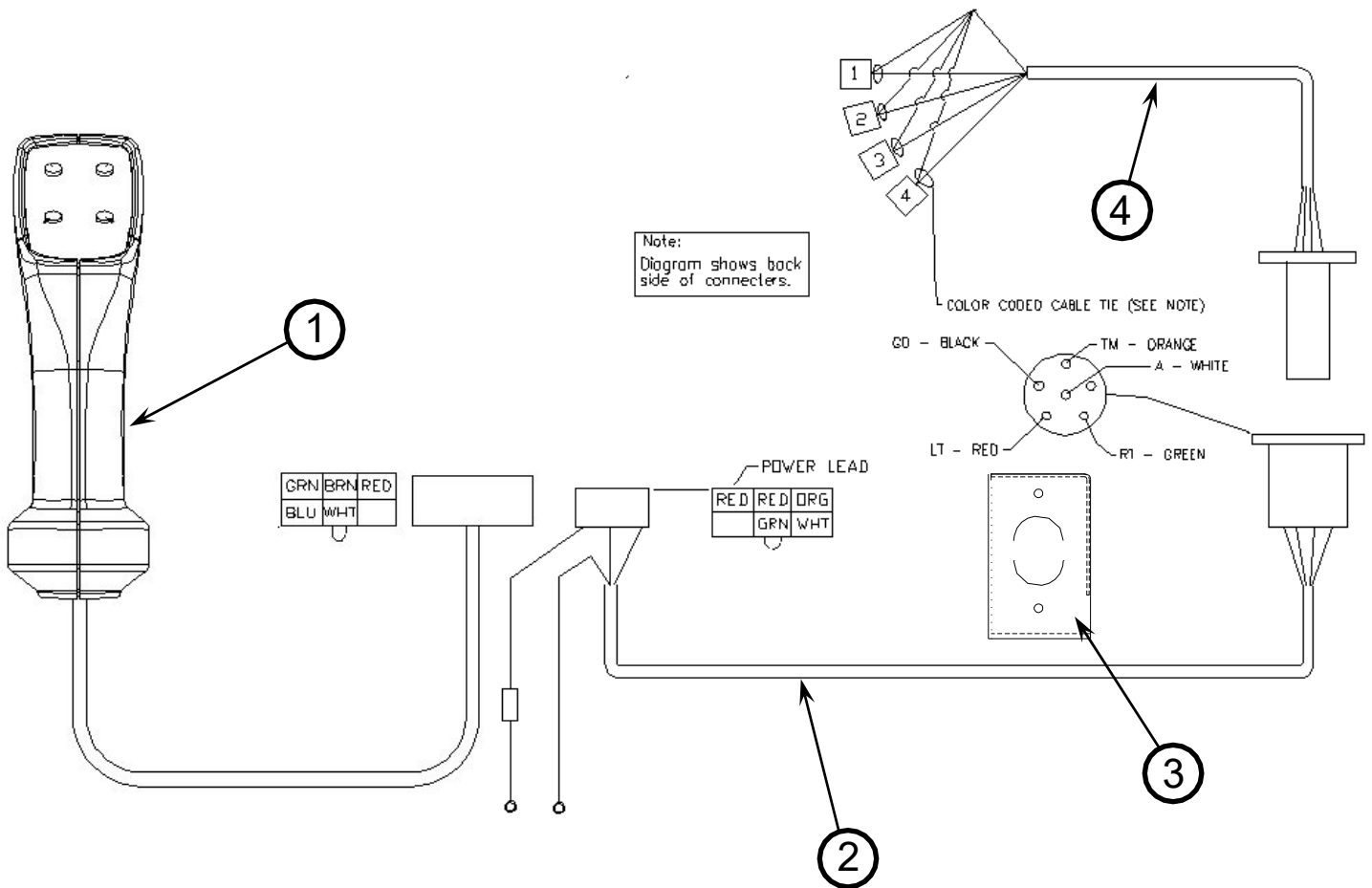
24" BUCKET SHOWN

PARTS INFORMATION

ITEM	QTY	PART NO.	DESCRIPTION	STOCK NO.
1	1	317856	THUMB BACKHOE LG W/A	
2	1	318347	FRAME MNT THUMB W/A	
3	1	201405	PIN HITCH 5/8 X 2-3/4	
4	1	318367	SUPPORT W/H MECH THUMB W/A	
5	1	318366	SUPPORT ADJ MECH THUMB W/A	
6	6	28280	RING SNAP EXT 1.25 X .050	
7	2	318358	PIN 1.25 X 6.25 SNP RNG GRS	
8	4	13226	BOLT HEX	1/2 X 6-1/2 NC GR 5
9	4	33012	WASHER FLAT	1/2"
10	6	36110	NUT HEX REG	1/2 NC
11	6	33626	WASHER LOCK	1/2"
12	6	33465	WASHER MB 1-1/4 14GA NARROW	
13	1	104410	PIN CLIP #9 5/32 X 3-1/16	
14	1	317985	PIN 1.25 X 10.25 SNP RNG GRS	
15	2	13227	BOLT HEX 1/2 X 7 NC GR 5	IN REAR HOLES ONLY



PARTS INFORMATION



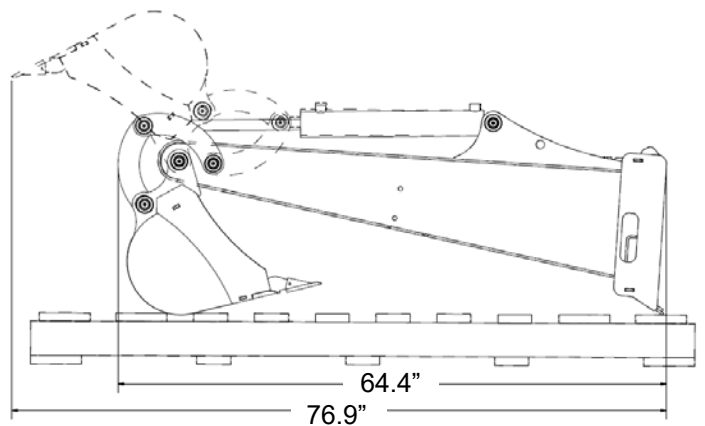
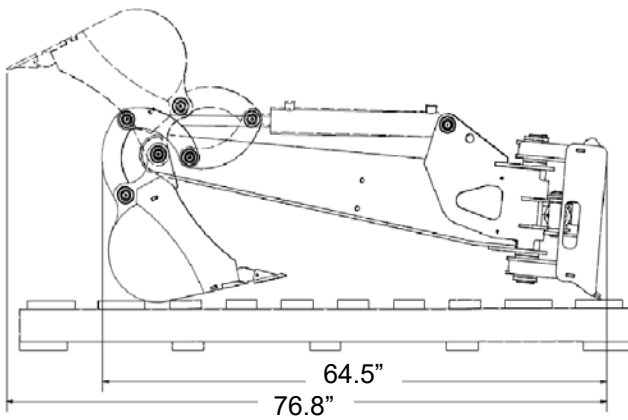
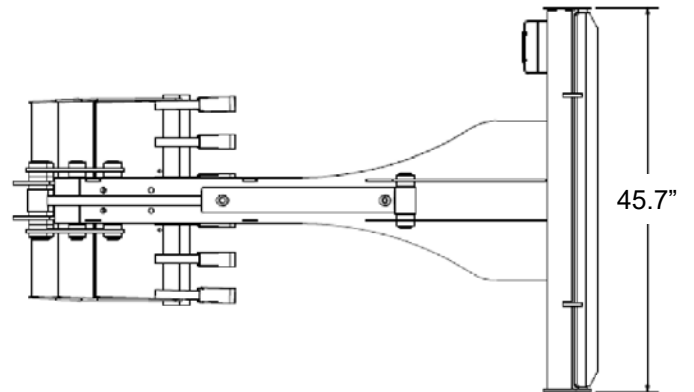
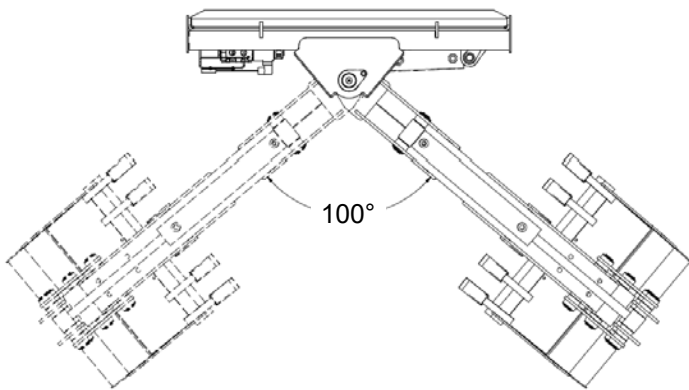
ITEM	PART NO.	DESCRIPTION	QTY.
	315128	COMPLETE HARNESS – generic (shown)	1
1	315110	PISTOL GRIP – handle assembly w/ harness	1
2	315126	LOADER HARNESS – assembly	1
3	202489	RECEPTACLE BRACKET – loader harness	1
4	315127	ATTACHMENT HARNESS - assembly	1

Optional Harnesses (not shown):

PART NO.	DESCRIPTION
315090	14-PIN UNIVERSAL – for Bobcat® Loaders
315152	14-PIN UNIVERSAL – for Case® & New Holland® Loaders
320084	14-PIN UNIVERSAL – for John Deere® Loaders
200008	8-PIN – for Caterpillar® A Series Loaders
315153	8-PIN – for ASV® Loaders
315339	8-PIN – for Caterpillar® B Series Loaders

GENERAL SPECIFICATIONS

Model	Solid Frame	Swing Frame
Operating Weight (no bucket)	350 lbs.	450 lbs.
Maximum Digging Depth	72"	72"
Rated Hydraulic Pressure	3000 psi	3000 psi
Swing Angle	N/A	100°
Bucket Digging Force SAE* @ 3000 psi	5400 lbf.	5400 lbf.
Bucket Weights		
9" Bucket		55 lbs.
12" Bucket		70 lbs.
15" Bucket		81 lbs.
18" Bucket		90 lbs.
24" Bucket		113 lbs.
24" Ditching Bucket		95 lbs.



All dimensions are in INCHES.



LIMITED WARRANTY

Quick Attach Attachments LLC warrants each new machine manufactured by us to be free from defects in material and workmanship for a period of twenty-four (24) months from date of delivery to the original purchaser.

Our obligation under this warranty is to replace free of charge, at our factory or Direct Outlet locations, any part proven defective within the stated warranty time limit.

All parts must be returned freight prepaid and adequately packaged to prevent damage in transit.

This warranty does not cover:

1. New products which have been operated in excess of rated capacities or negligence
2. Misuse, abuse, accidents or damage due to improperly routed hoses
3. Machines which have been altered, modified or repaired in any manner not authorized by our company
4. Previously owned equipment
5. Any ground engaging tools in which natural wear is involved, i.e. tooth tips, cutting teeth, etc
6. Normal maintenance
7. Fork tines
8. Hydraulic motors that have been disassembled in any manner

In no event will the Sales Representative, Direct Outlet, Quick Attach Attachments LLC, or any other company affiliated with it or them be liable for incidental or consequential damages or injuries, including but not limited to the loss of profit, rental or substitute equipment or other commercial loss. Purchaser's sole and exclusive remedy being as provided here in above.

Quick Attach Attachments LLC must receive immediate notification of defect and no allowance will be made for repairs without our consent or approval.

This warranty is in lieu of all other warranties, express or implied by law or otherwise, and there is no warranty of merchantability or fitness purpose.

No agent, employee, or representative of Quick Attach Attachments LLC has any authority to bind Quick Attach Attachments LLC to any warranty except as specifically set forth herein. Any of these limitations excluded by local law shall be deemed deleted from this warranty; all other terms apply.

This warranty may not be enlarged or modified in any manner except in writing signed by an executive officer of Quick Attach Attachments LLC to improve its products whenever it is possible and practical to do so. Quick Attach Attachments LLC reserves the right to make changes and or add improvements at any time without incurring any obligation to make such changes or add such improvements to products previously sold.

Quick Attach Attachments LLC
P.O. Box 128 Alexandria, MN 56308
Phone (320) 759-1551 Fax (320) 759-1590



P/N 317851
Quick Attach Attachments LLC

Date Printed: 8/16/2024

Printed in U.S.A.