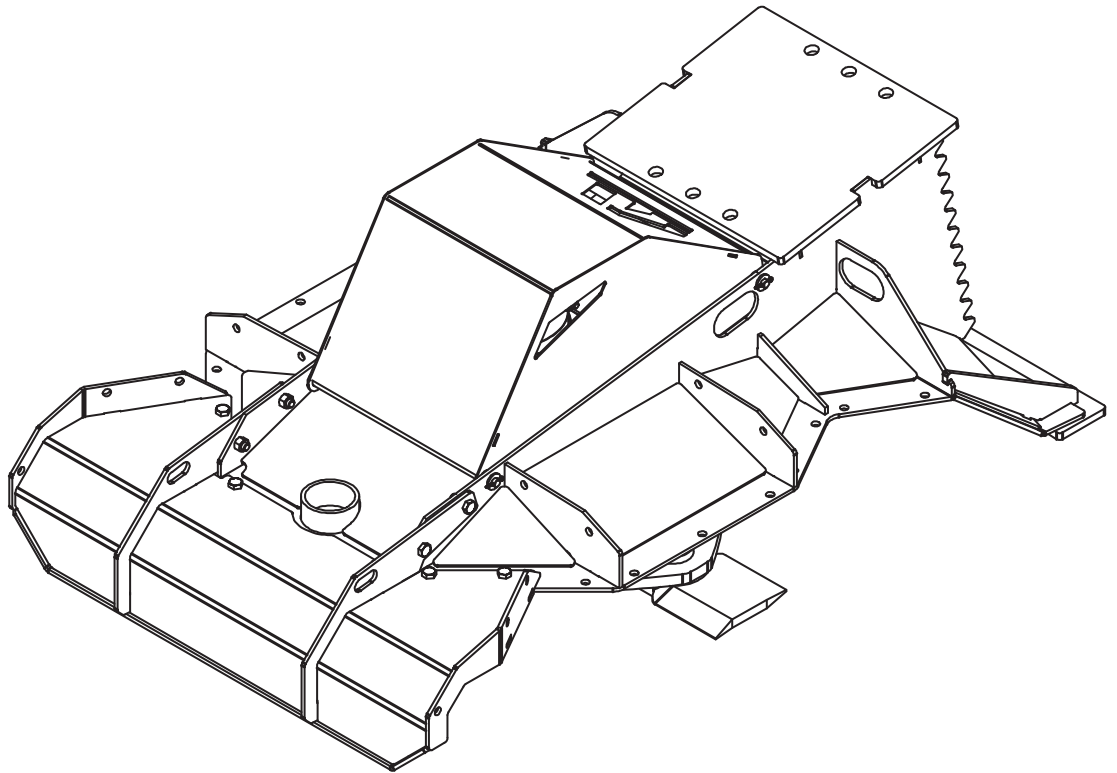




# QUICK ATTACH



## EXCAVATOR MOWER

Operator's Manual

Maintenance & Parts Information



**Read this Manual Before Use**

# TABLE OF CONTENTS

---

SAFETY	3-4
DECAL INFORMATION	5-7
OPERATING INSTRUCTIONS	8
MAINTENANCE	9-11
TORQUE INFORMATION	12
PARTS INFORMATION	13-17
GENERAL SPECS	18
WARRANTY	19

**NOTE:** Write your serial number for your attachment in the spaces below. Always refer to this serial number when calling for services parts.

---

**Serial Number**

---

**Attachment Dealer**

---

**Address**

---

**Phone Number**

---

**Contact**

**NOTE:** Quick Attach LLC reserves the right to make improvements in design or changes in specifications at any time without notice and without incurring any obligations to install them on units previously sold.

# SAFETY

---

**DO NOT use or perform maintenance on this machine until this manual has been read and understood. In addition, read the Operation and Maintenance Manual(s) pertaining to the attachment and the attachment carrier (“Loader”).**

The user is responsible for inspecting the machine daily, and for having parts repaired or replaced when continued use of the machine would cause damage, excessive wear to other parts or make the machine unsafe for continued operation.

If an operating procedure, tool device, maintenance or work method not specifically recommended is used; you must satisfy yourself that it is safe for you and others. You must also ensure that the attachment will not be damaged or made unsafe by the procedures you choose.

Erskine Attachments LLC cannot anticipate every possible circumstance that might involve potential hazard. The safety messages found in this manual and on the machine are therefore not all inclusive

The signal words **CAUTION**, **WARNING**, or **DANGER** are used to indicate hazards.

## **CAUTION**

Indicates a potentially hazardous situation which, if not avoided, may result in minor or moderate injury.

## **WARNING**

Indicates a potentially hazardous situation which, if not avoided, could result in death or serious injury.

## **DANGER**

Indicates a potentially hazardous situation which, if not avoided, will result in death or serious injury.

The word **IMPORTANT** is used in the text when immediate damage will occur due to improper technique or operation.

The word **NOTE** is used to convey information that is out of context with the manual text; special information such as specifications, techniques, reference information, and other information of a supplementary nature.

# SAFETY

---

## Improper operation can cause serious injury or death.

### PRE-OPERATION

- This attachment is designed for mowing grass, brush, and small trees only. **NEVER** use this attachment for purposes other than intended.
- Read the operator's manual for the "Excavator". **NEVER** allow untrained people to operate.
- Operating instructions must be given to everyone before operating this machine and at least once a year thereafter in accordance with OSHA regulations.
- **NEVER** exceed the maximum recommended input power or speed specifications for the attachment. Overpowering or over-speeding the attachment may cause personal injury and/or machine damage.
- Keep all shields, guards, and covers in place.
- Do not modify equipment or add attachments that are not approved by Erskine Attachments LLC.
- Use adequate safety warning lights and devices as required by local regulations. Obey all local laws and regulations regarding machine operation on public property.

### OPERATION

- Always wear eye protection that meets z87.1 or use with a loader enclosure that provides similar protection.
- Hydraulic connections may be hot after use. Use gloves if connecting or disconnecting after use.
- Check and be sure all operating controls are in neutral before starting the engine.
- Keep people away from loader and attachment when in use. This attachment send objects flying and has rotating parts. **NEVER** direct discharge toward people - rocks and debris can be thrown hundreds of feet.

### OPERATION (continued)

- **NEVER** operate near embankments or terrain that is so steep that rollover could occur.
- Always stay in the operator position when using the attachment.
- Before leaving the operator position, disengage hydraulic drive, lower the attachment to rest flat on the ground, stop engine, set park brake, and wait for all motion to stop.
- **NEVER** clear debris while engine is running.

### AVOID HIGH PRESSURE FLUIDS HAZARD

- Escaping fluid under pressure can penetrate the skin causing serious injury.
- Avoid the hazard by relieving the pressure before disconnecting hydraulic lines.
- Use a piece of paper or cardboard, **NOT BODY PARTS**, to check for suspected leaks. Wear protective gloves and safety glasses or goggles when servicing or performing maintenance on hydraulic systems.
- If an accident occurs, see a doctor immediately. Any fluid injected into the skin must be surgically removed within a few hours or gangrene may result.

### MAINTENANCE

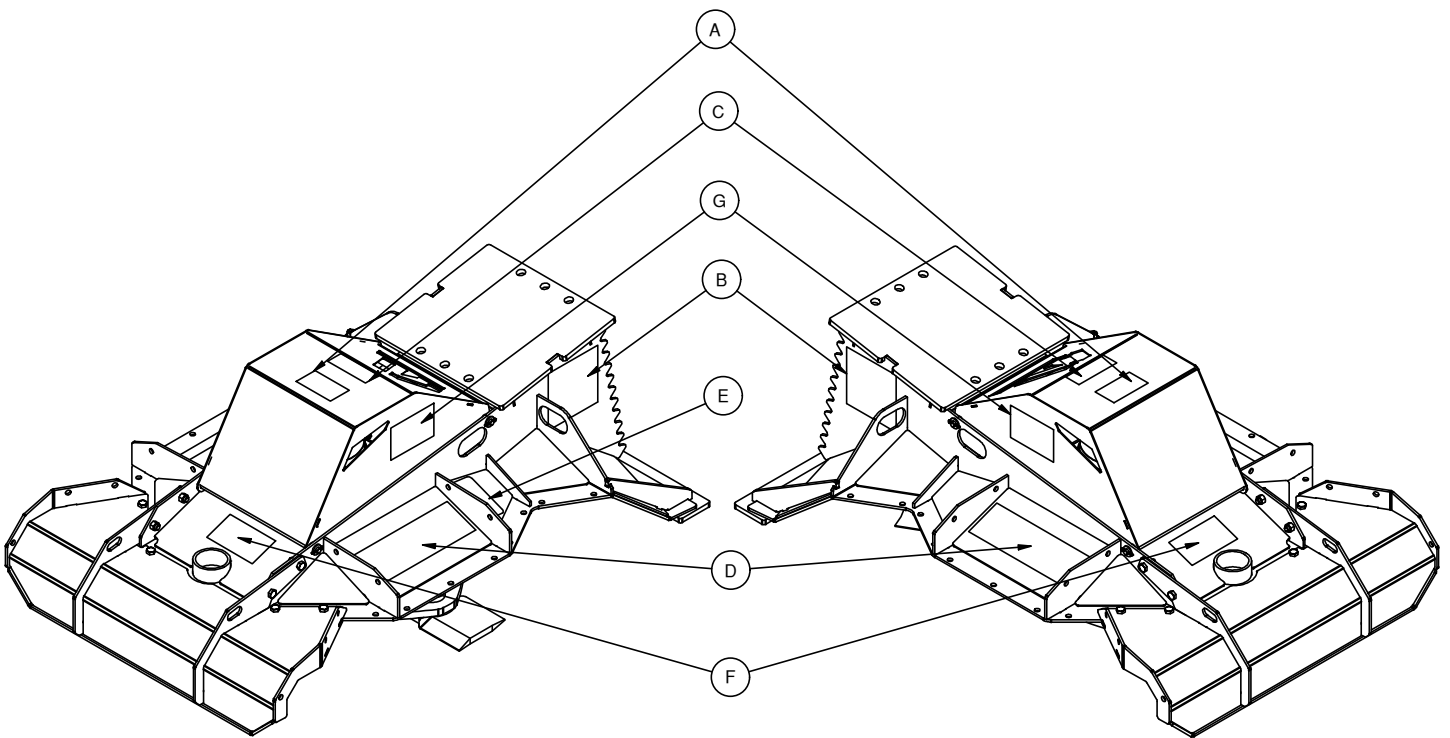
- **NEVER** make adjustments, lubricate, clean, or perform any service on the machine while it is in operation.
- Make sure the attachment is serviced on a daily basis. Improper maintenance can cause serious injury or death in addition to damage to the attachment and/or your equipment.

# DECAL INFORMATION

---

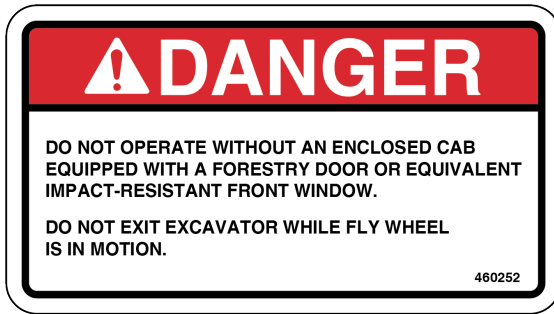
## Serial Number Location:

It is important to refer to the serial number of your attachment when making repairs or ordering parts. Early or later models (identification made by serial number) may use different parts, or it may be necessary to use different procedures in doing a specific operation. Please see below for Serial Plate location.



# DECAL INFORMATION

**A**



Part number: 460252  
Location: Top of hood  
Quantity: 1

**B**



Part number: 460235  
Location: Rear side of body (L/R)  
Quantity: 2

**D**



Part number: 460236  
Location: Outside of (L/R) deck  
Quantity: 2

**E**



Part number: 200001  
Location: Outsides of LH deck rib  
Quantity: 2

## Safety Decals Locations:

The locations of the safety decals are shown. If these decals are missing, damaged, or painted over they must be replaced. Call Quick Attach LLC (320-759-1551) for replacement decals.

# DECAL INFORMATION

F



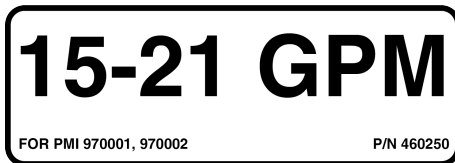
Part number: 314095  
Location: Front of deck  
Quantity: 1

G

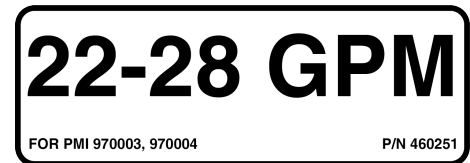


Part number: 332280  
Location: Side of cover  
Quantity: 2

C



OR



Part number: 341403  
Location: Top of cover  
Quantity: 1 (only on std flow)

Part number: 341404  
Location: Top of cover  
Quantity: 1 (only on high flow)

## Safety Decals Locations:

The locations of the safety decals are shown. If these decals are missing, damaged, or painted over they must be replaced. Call Quick Attach LLC (320-759-1551) for replacement decals.

# OPERATING INSTRUCTIONS

The type of brush being cut and the ground conditions will determine the best ground speed and cutting procedure. The brush mower is designed to cut short or tall grass, brush and small trees.

**IMPORTANT:** Before operating the attachment, perform the service schedule for routine maintenance.

1. Inspect the cutting area for obstructions such as stumps, wire, rocks, electrical lines, debris, drop offs, holes, etc. Remove obstructions from the cutting area that might be picked up and thrown.
2. With the operator in the seat of the loader, the seat belt fastened and the seat bar lowered (if so equipped), start the engine.

**⚠ WARNING** To improve stability, always carry attachment low to the ground while driving.

3. Activate the auxiliary hydraulic system to start the blade rotation. Make sure auxiliary hydraulic circuit is operating in the correct direction on high flow models. (Clockwise rotation viewed from the top)

**IMPORTANT:** Engine must be at idle speed when engaging auxiliary hydraulic system.

**IMPORTANT:** The standard flow version of this mower is designed to operate from 15 to 21 GPM. The high flow version is designed to operate from 22 to 28 gpm. Operating at higher than the rated flow can cause serious damage to the mower and will void the warranty.

**IMPORTANT:** Do not operate the brush mower if excessive vibration is present. Serious damage can occur. Check blades and blade carrier.

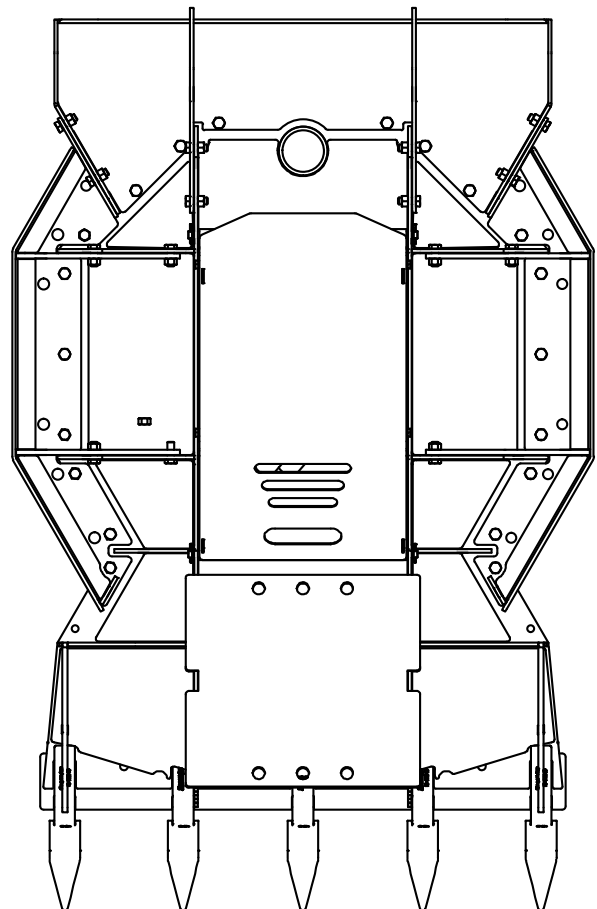
## Brake Circuit

The mower is equipped with a shutdown braking circuit that stops the blade rotation in an abbreviated amount of time. This is controlled with the pressure relief valve in the motor.

**⚠ WARNING** Do not operate the brush mower with the brake circuit disabled or if malfunctioning. Never exit the machine when the blades are still moving. If you think your brake circuit is not functioning correctly, have it serviced immediately.

**IMPORTANT:** Do not adjust the pressure relief valve under any circumstances. This could cause an unsafe braking condition and will void all warranties.

**NOTE:** If you are operating the loader controls correctly and the mower still does not work, try switching the hydraulic couplers around on the mower lead hoses. This will effectively reverse the flow to the motor.



# ROUTINE MAINTENANCE

---

## **WARNING**

Lower the attachment to rest flat on the ground, shut down the engine, relieve the hydraulic pressure to the attachment, set the park brake, and wait for all motion to stop before leaving the operator's seat to perform service of any kind.

It is the operator's responsibility to make daily inspections of the loader and attachment for damage, loose bolts, fluid leaks, or anything else that could cause a potential service or safety problem. Preventive maintenance is the easiest and least expensive type of maintenance.

**IMPORTANT:** Bolts can loosen after initial usage. After the first hour of operation check all bolts.

Follow the rotary cutter service schedule for routine maintenance.



1. Check the following items every 4 hours of operation:
2. Check blades for cracks or damage. Replace in set if necessary.
3. Check carbide teeth for damage. Replace as needed.
4. Check blade mounting hardware for proper torque of 1000ft. lbs. (1355Nm).
5. Check all hardware. Retighten if necessary.
6. Check deck and shields. Repair if damaged or replace if necessary.
7. Check for damaged or missing decals. Replace if missing.
8. Check for damaged or leaking hydraulic hoses or fittings. Replace if necessary.
9. Clean debris, leaves, grass, and flammable material from deck area and under covers.

Change the bearing carrier oil after the first **50 hours** of operation. Change the oil **annually** or every **500 hours** of operation thereafter, whichever comes first.

# ROUTINE MAINTENANCE

## Blade Removal and Installation

**NOTE:** Check that the blades can swing freely. Also check blades, mounting hardware, and blade carrier for wear, cracking, or breakage, which can cause excessive vibrations. Replace if damaged.

Only service the blades when attachment is attached to the loader.

**⚠ WARNING** To avoid injury or death, before exiting under or servicing under the attachment, be sure to disconnect the auxiliary hydraulic hoses. Raise the lift arms and tilt the attachment down fully. Install an approved lift arm support and stop the engine. Refer to loader's operator's manual for arm support installation instructions.

**⚠ WARNING** Bent, deformed, cracked, or damaged blades should be removed from the unit and discarded immediately. Never attempt to repair or reuse a damaged blade.

**⚠ WARNING** Always replace worn blades. Do not sharpen or weld on the blades. Excessively worn blades can break and be thrown hundreds of feet.

**⚠ CAUTION** Wear safety glasses and gloves when removing and installing blades.

### Removal:

1. Rotate the blade carrier until the bolt is aligned with the bolt access hole in the deck.
2. Remove the roll pin and nut from the blade bolt. Remove the blade bolt, blade, and washer.

Blade bolt and blade may fall from the blade carrier when removing the blade nut. Always support the blade bolt and blade while removing the nut.

### Installation:

1. Always use a new nut, bolt, and roll pin during assembly.

2. Install the new blade bolt through the new blade, washer, and blade carrier. Install the new nut on the blade bolt.
3. Tighten the nut to 1000 ft. lbs. (1355 Nm) torque and install roll pin.
4. Repeat the procedure for the other blades.

**NOTE:** Install the washer between the blade and the blade carrier.

## Blade Carrier Removal

Before removing the blade carrier, make sure the mower is held in a secure position. We recommend tipping the mower up on its nose with a hoist.

**⚠ WARNING** To avoid injury or death, do not stand directly under blade carrier. Blade carrier may shift when bolts are removed.

1. Secure the carrier with a chain hoist
2. Remove the eight bolts that retain the carrier.

**IMPORTANT:** When reinstalling the blade carrier plate, torque all 3/4" bolts to 340 ft-lbs and make sure to install the special lock washers.

## Gearbox Fluid Check and Fill

1. Position the Brush Mower flat on the ground.
2. Remove the motor cover to gain access to the bearing carrier.

**Note:** Do not operate without cover in place.

3. Remove the fill plug on the top side of the bearing carrier. Fluid must be visible in the hole.
4. If it is low, add gear lube (see chart pg.12).
5. Reinstall the fill plug and motor cover.

# ROUTINE MAINTENANCE

## Replacing Bearing Carrier Fluid

1. Remove plug on bearing carrier.
2. Tip attachment on side.
3. Let fluid drain completely
4. Add fluid
5. Install plug

**NOTE:** Fluids such as engine oil, gear lube, and hydraulic fluid must be disposed of in an environmentally safe manner. Some regulations require that certain spills and leaks be cleaned in a specific manner. Check local, state, and federal regulations for the correct disposal.

## Reversing Blade Rotation

The mower is equipped with double-sided blades. But is most optimal in clock wise rotation.

**IMPORTANT:** When both edges of the blade are excessively worn, replace all blades at the same time.



## Cleaning the Mower

**⚠ WARNING** To avoid injury or death, before working on or servicing the attachment, be sure to disconnect the auxiliary hydraulic hoses. Raise the mower off the ground and set on the front push bar in a vertical position. Then turn the machine off.

1. Position the attachment by raising the attachment off the ground and tilting the attachment down and allow it to set on the ground with the deck perpendicular with the ground.
2. Turn off the machine, then exit.

**⚠ CAUTION** Always wear eye protection that meets z87.1 when cleaning.

3. Use water or a small brush to clean debris from the areas under the cover and around the gearbox.

**⚠ WARNING** Use care when removing any debris that is wrapped around the blades, stump jumper, or bearing carrier shaft. Blades can rotate suddenly.

# TORQUE INFORMATION

## Torque-Tension Relationships for SAE J429 Grade Bolts

Nominal Thread Size	SAE J429 Grade 2			SAE J429 Grade 5			SAE J429 Grade 8		
	Clamp Load (lbs)	Tightening Torque		Clamp Load (lbs)	Tightening Torque		Clamp Load (lbs)	Tightening Torque	
		K = .15	K = .20		K = .15	K = .20		K = .15	K = .20
<b>Unified Coarse Thread Series</b>									
1/4-20	1,300	49 in-lbs	65 in-lbs	2,000	75 in-lbs	100 in-lbs	2,850	107 in-lbs	143 in-lbs
5/16-18	2,150	101	134	3,350	157	210	4,700	220	305
3/8-16	3,200	15 ft-lbs	20 ft-lbs	4,950	23 ft-lbs	31 ft-lbs	6,950	32.5 ft-lbs	44 ft-lbs
7/16-14	4,400	24	30	6,800	37	50	9,600	53	70
1/2-13	5,850	36.5	49	9,050	57	75	12,800	80	107
9/16-12	7,500	53	70	11,600	82	109	16,400	115	154
5/8-11	9,300	73	97	14,500	113	151	20,300	159	211
3/4-10	13,800	129	173	21,300	200	266	30,100	282	376
7/8-9	11,425	125	166	29,435	321	430	41,550	454	606
1-8	15,000	187.5	250	38,600	482.5	640	54,540	680	900
<b>Unified Fine Thread Series</b>									
1/4-28	1,500	55 in-lbs	75 in-lbs	2,300	85 in-lbs	115 in-lbs	3,250	120 in-lbs	163 in-lbs
5/16-24	2,400	112	150	3,700	173	230	5,200	245	325
3/8-24	3,600	17 ft-lbs	22.5 ft-lbs	5,600	26 ft-lbs	35 ft-lbs	7,900	37 ft-lbs	50 ft-lbs
7/16-20	4,900	27	36	7,550	42	55	10,700	59	78
1/2-20	6,600	41	55	10,200	64	85	14,400	90	120
9/16-18	8,400	59	79	13,000	92	122	18,300	129	172
5/8-18	10,600	83	110	16,300	128	170	23,000	180	240
3/4-16	15,400	144	193	23,800	223	298	33,600	315	420
7/8-14	12,610	138	184	32,480	355	473	45,855	500	668
1-12	16,410	205	273	42,270	528	704	59,670	745	995

Clamp load estimated as 75% of proof load for specified bolts.

Torque values for 1/4 and 5/16 inch series are in inch-pounds. All other torque values are in foot-pounds.

Torque values calculated from formula  $T = KDF$

where:  $K=0.15$  for "lubricated" conditions

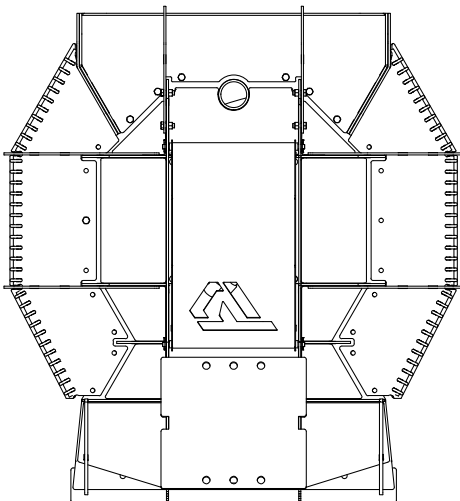
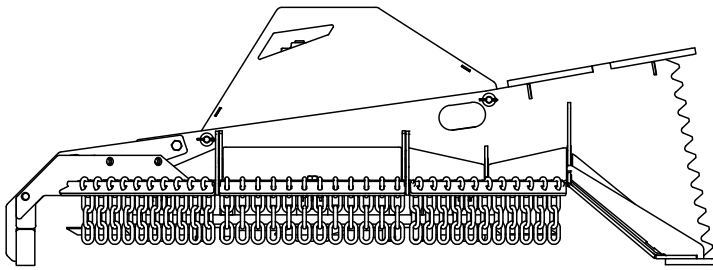
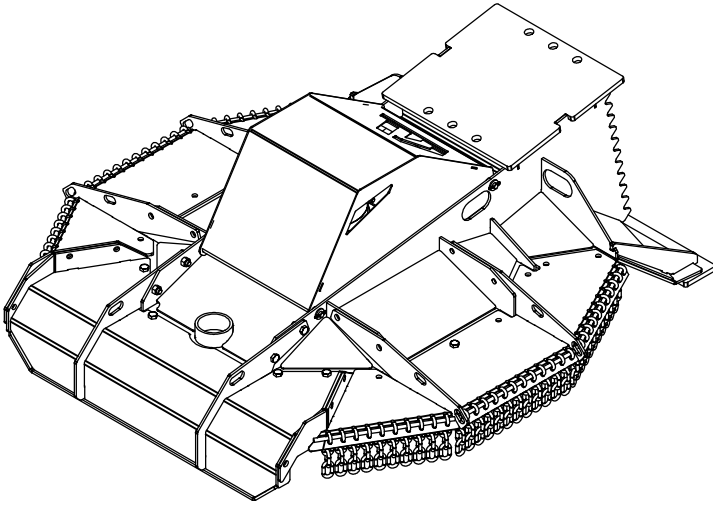
$K=0.20$  for "dry" conditions

# PARTS INFORMATION

---

## Chain Push Guard

Keeps debris contained and helps prevent material from being discharged to the sides during operation.

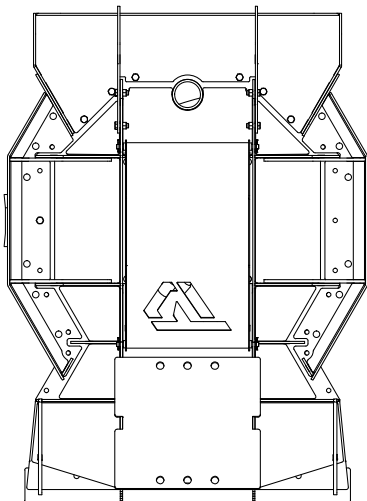
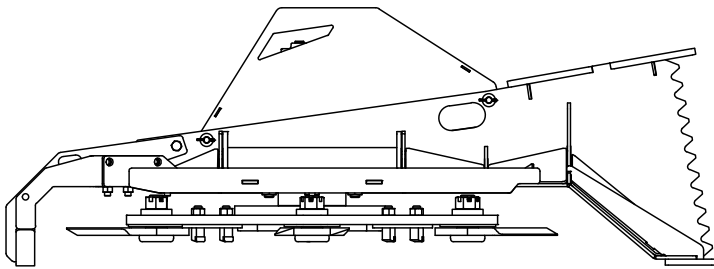
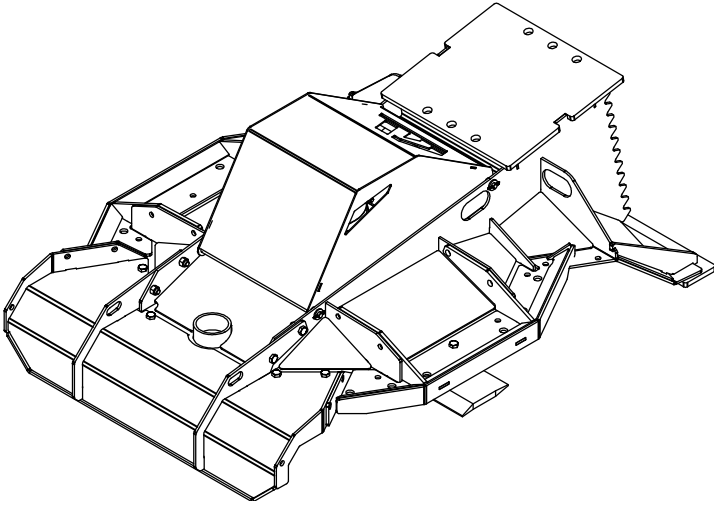


# PARTS INFORMATION

---

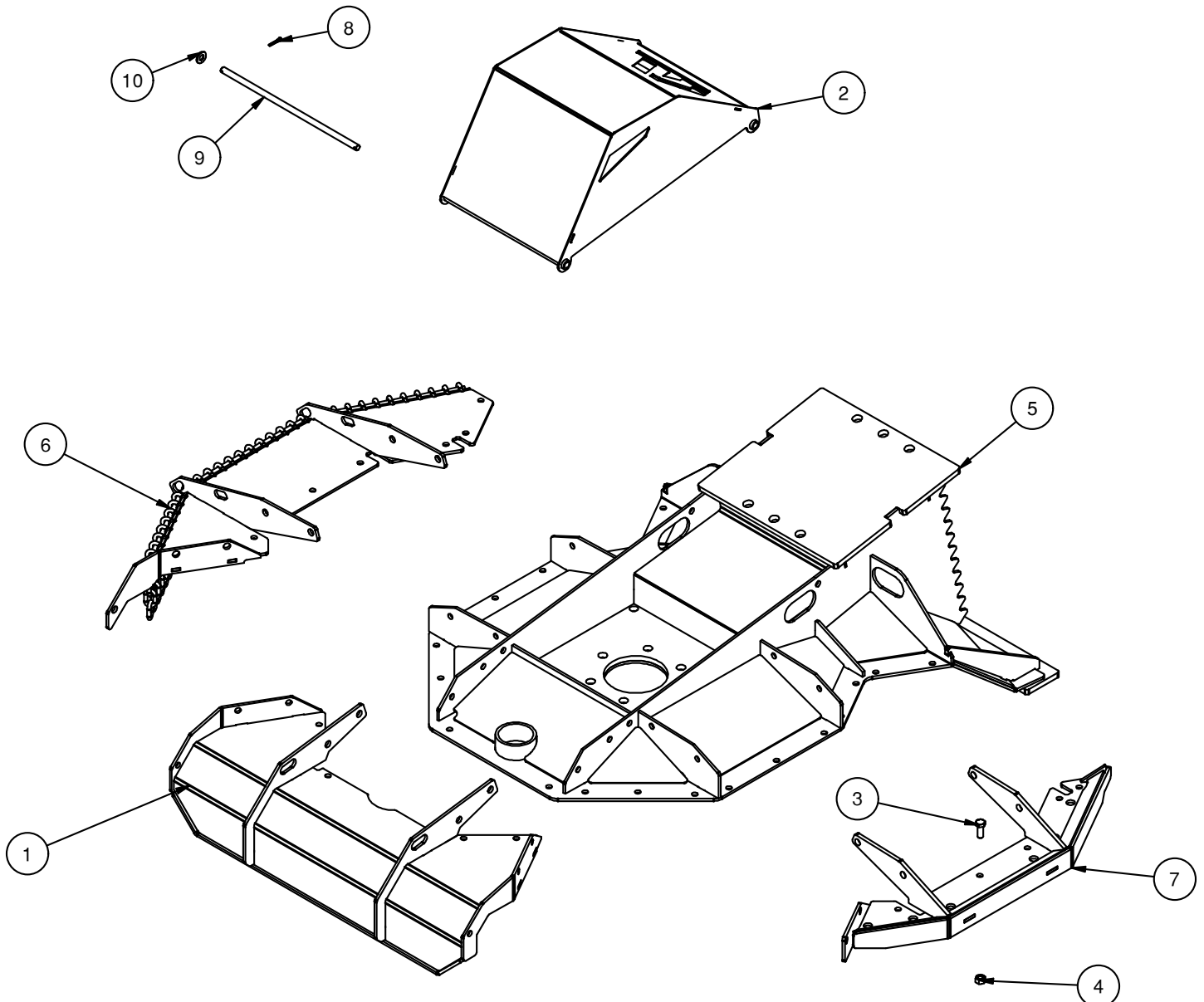
## Push Guard

Designed to push heavy material forward and assist in feeding dense brush into the cutter path during operation.



# PARTS INFORMATION

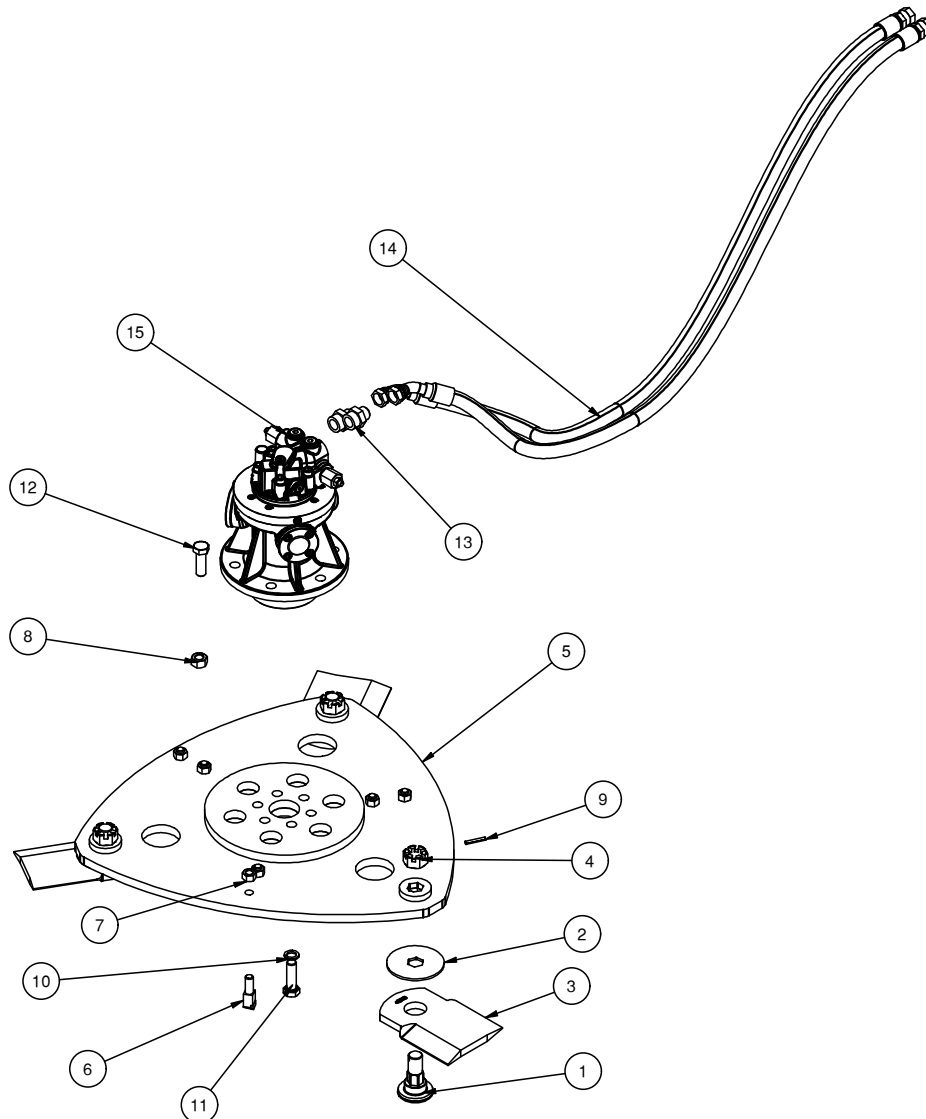
ITEM	QTY	PART NUMBER	DESCRIPTION	STOCK NO.
1	1	460101	FRONT EXCAV GUARD W/A	
2	1	460104	COVER MOTOR EXCAV QA W/A	
3	40	13207	BOLT HEX	
4	40	37214	NUT HEX 1/2 REV LOCK	
5	1	460134	DECK EXCAV MWR 42 QA W/A	
6	1	460113	SIDE CHAIN GUARD RH W/A	
	1	460112	SIDE CHAIN GUARD LH W/A	
7	1	460184	PUSH BAR EA W/A LH	
	1	460185	PUSH BAR EA W/A RH	
8	4	65076	PIN COTTER 1/8 X 1	
9	2	460138	PIN .50 X 16.38 W/H Z	
10	4	33086	WASHER FLAT	



# PARTS INFORMATION

60 CC

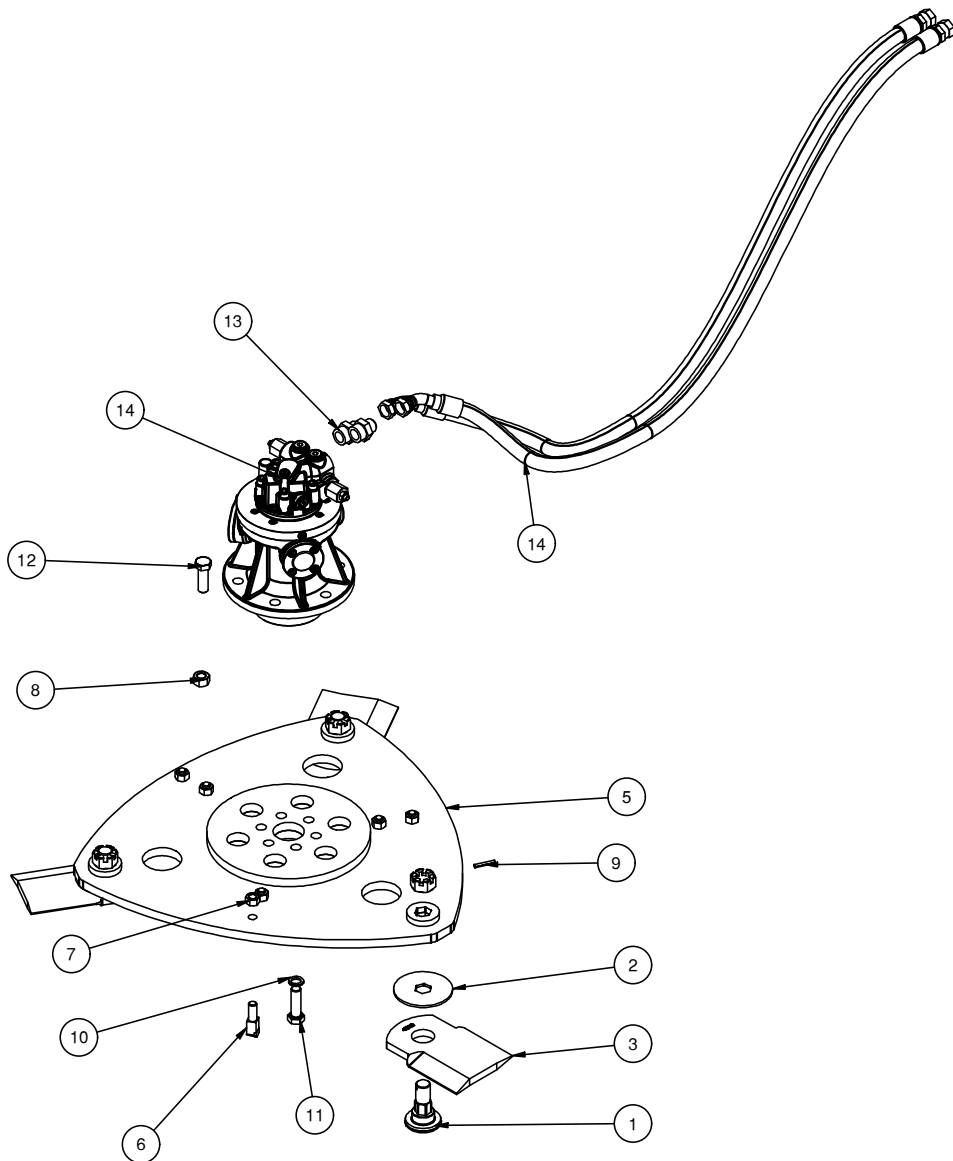
ITEM	QTY	PART NUMBER	DESCRIPTION	STOCK NO.
1	3	332343	BOLT .625 BLADE HEX 1-1/8 NF X 3.20	
2	3	350504	WASHER 1.137 HEX ID X 4.50 OD	
3	3	460060	BLADE .625 X 9 FLAT FORGED DD	
4	3	331371	NUT HEX 1-1/8-12 SLOTTED GR8	
5	1	460069	STMP JMPR EXCAV 42 MOWER W/A	
6	6	421966	TOOTH CARBIDE 3SG	
7	6	37312	NUT HEX	
8	7	38067	NUT HEX	
9	3	331373	PIN ROLL 1/4 X 1.625 Z	
10	6	460141	WASHER NORD-LOCK 3/4"/M19 NARROW OD	
11	6	15363	BOLT HEX	
12	6	15362	BOLT HEX	
13	4	201527	ADPT STR 16MB-12MJ	
14	1	460225	HOSE KIT	
15	1	460166	MOTOR SK02-BC55 60CC INTEGRAL	



# PARTS INFORMATION

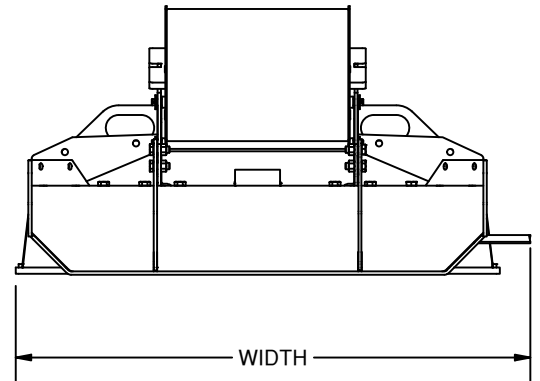
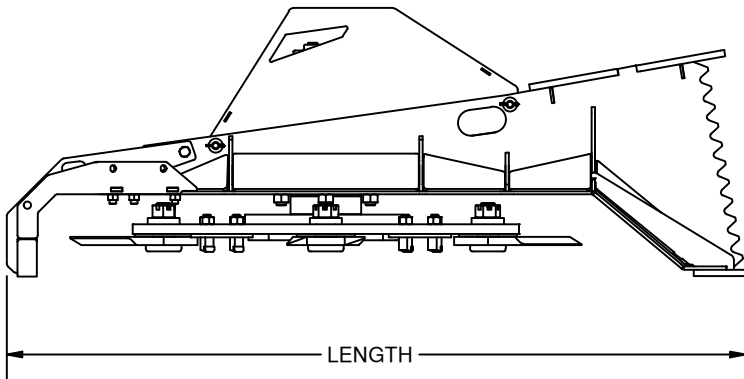
## 75 CC

ITEM	QTY	PART NUMBER	DESCRIPTION	STOCK NO.
1	3	332343	BOLT .625 BLADE HEX 1-1/8 NF X 3.20	
2	3	350504	WASHER 1.137 HEX ID X 4.50 OD	
3	3	460060	BLADE .625 X 9 FLAT FORGED DD	
4	3	331371	NUT HEX 1-1/8-12 SLOTTED GR8	
5	6	421966	TOOTH CARBIDE 3SG	
6	6	37312	NUT HEX	
7	7	38067	NUT HEX	
8	3	331373	PIN ROLL 1/4 X 1.625 Z	
9	6	460141	WASHER NORD-LOCK 3/4"/M19 NARROW OD	
10	6	15363	BOLT HEX	
11	6	15362	BOLT HEX	
12	4	201527	ADPT STR 16MB-12MJ	
13	1	460225	HOSE KIT	
14	1	460230	MOTOR SK02-BC55 75CC INTEGRAL	



# GENERAL SPECS

Model	42" 60CC	42" 75CC
Part Number	970001	970003
Operating Weight	785 lbs.	785 lbs.
Overall Height	22"	24"
Overall Length	58"	58"
Overall Width	39"	39"
Blade Carrier Thickness	3/4" Grade 50 Steel	3/4" Grade 50 Steel
Cutting Width	42"	42"
Number of Blades	(3) 1/2" 6.5" Long	(3) 1/2" 6.5" Long
Number of Carbides	6	6
Flow Range	15-21 GPM (Standard Flow)	22-28 GPM (High Flow)
Maximum PSI	3600	3600
Blade System Mass	198 lbs.	198 lbs.
Tip Speed	14,568 ft/min @ 21 GPM	15,539 ft/min @ 28 GPM





## LIMITED WARRANTY

Quick Attach Attachments, LLC warrants each new machine manufactured by us to be free from defects in material and workmanship for a period of twenty-four (24) months from date of delivery to the original purchaser.

Our obligation under this warranty is to replace free of charge, at our factory or Direct Outlet locations, any part proven defective within the stated warranty time limit.

All parts must be returned freight prepaid and adequately packaged to prevent damage in transit.

This warranty does not cover:

1. New products which have been operated in excess of rated capacities or negligence
2. Misuse, abuse, accidents or damage due to improperly routed hoses
3. Machines which have been altered, modified or repaired in any manner not authorized by our company
4. Previously owned equipment
5. Any ground engaging tools in which natural wear is involved, i.e. tooth tips, cutting teeth, etc
6. Normal maintenance
7. Fork tines
8. Hydraulic motors that have been disassembled in any manner

In no event will the Sales Representative, Direct Outlet, Quick Attach Attachments, LLC, or any other company affiliated with it or them be liable for incidental or consequential damages or injuries, including but not limited to the loss of profit, rental or substitute equipment or other commercial loss. Purchaser's sole and exclusive remedy being as provided here in above.

Quick Attach Attachments, LLC must receive immediate notification of defect and no allowance will be made for repairs without our consent or approval.

This warranty is in lieu of all other warranties, express or implied by law or otherwise, and there is no warranty of merchantability or fitness purpose.

No agent, employee, or representative of Quick Attach Attachments, LLC has any authority to bind Quick Attach Attachments, LLC to any warranty except as specifically set forth herein. Any of these limitations excluded by local law shall be deemed deleted from this warranty; all other terms apply.

This warranty may not be enlarged or modified in any manner except in writing signed by an executive officer of Quick Attach Attachments, LLC to improve its products whenever it is possible and practical to do so. Quick Attach Attachments, LLC reserves the right to make changes and or add improvements at any time without incurring any obligation to make such changes or add such improvements to products previously sold.

Quick Attach Attachments, LLC  
P.O. Box 128 Alexandria, MN 56308  
Phone (320) 759-1551  
Fax (320) 759-1590

