

# **Operation & Maintenance Manual**

# **Brush Buster Max™**

## **Brush Mower**

For  
**Skid Steer Loaders**



**Read this Manual Before Use**

**TABLE OF CONTENTS**

SAFETY	3-4
SERIAL NUMBER/DECAL LOCATION	5-6
USERS INSTRUCTIONS FOR MOUNTING THE BRUSH MOWER	7-8
OPERATING THE BRUSH MOWER	9-11
ROUTINE MAINTENANCE	12-18
BOLT TORQUE INFORMATION	19
PARTS INFORMATION	20-29
GENERAL SPECIFICATIONS	30
WARRANTY	31

**REFERENCE INFORMATION**

Write the correct information for YOUR attachment in the spaces below. Always use these numbers when referring to your attachment.

Attachment Serial Number.....\_\_\_\_\_

**YOUR ATTACHMENTS DEALER**

\_\_\_\_\_  
**ADDRESS:**

\_\_\_\_\_  
**PHONE:**

\_\_\_\_\_  
**CONTACT:**

\_\_\_\_\_

**NOTE:** Quick Attach Attachments LLC reserves the right to make improvements in design or changes in specifications at any time without notice and without incurring any obligations to install them on units previously sold.

# SAFETY

---

**DO NOT use or perform maintenance on this machine until this manual has been read and understood. In addition, read the Operation and Maintenance Manual(s) pertaining to the attachment and the attachment carrier (“Loader”).**

The user is responsible for inspecting the machine daily, and for having parts repaired or replaced when continued use of the machine would cause damage, excessive wear to other parts or make the machine unsafe for continued operation.

If an operating procedure, tool device, maintenance or work method not specifically recommended is used; you must satisfy yourself that it is safe for you and others. You must also ensure that the attachment will not be damaged or made unsafe by the procedures you choose.

Quick Attach Attachments LLC cannot anticipate every possible circumstance that might involve potential hazard. The safety messages found in this manual and on the machine are therefore not all inclusive.

The signal words **CAUTION**, **WARNING**, or **DANGER** are used to indicate hazards.

**⚠ CAUTION** Indicates a potentially hazardous situation which, if not avoided, may result in minor or moderate injury.

**⚠ WARNING** Indicates a potentially hazardous situation which, if not avoided, could result in death or serious injury.

**⚠ DANGER** Indicates a potentially hazardous situation which, if not avoided, will result in death or serious injury.

The word **IMPORTANT** is used in the text when immediate damage will occur due to improper technique or operation.

The word **NOTE** is used to convey information that is out of context with the manual text; special information such as specifications, techniques, reference information, and other information of a supplementary nature.

## Improper operation can cause serious injury or death.

### Pre-operation

- This attachment is designed for mowing grass, brush and small saplings only. **NEVER** use this machine for any other purpose.
- Read the operator's manual for the "Skid Steer Loader." **NEVER** allow untrained people to operate.
- Operating instructions must be given to everyone before operating this attachment and at least once a year thereafter in accordance with OSHA regulations.
- **NEVER** exceed the maximum recommended input power or speed specifications for the attachment. Over-powering or over-speeding the attachment may cause personal injury and/or machine damage.
- Keep all shields, guards, and covers in place.
- Do not modify equipment or add attachments that are not approved by Quick Attach Attachments LLC.
- Use adequate safety warning lights and devices as required by local regulations. Obey all local laws and regulations regarding machine operation on public property.

### Operation

- To protect the operator from debris and cab intrusion, loader must have polycarbonate or similar strength door and door must be closed in order to operate the attachment.
- Hydraulic connections may be hot after use. Use gloves if connecting or disconnecting after use.
- Check and be sure all operating controls are in neutral before starting the engine.
- Keep people away from loader, attachment and discharge when in use. This attachment sends objects flying and has rotating parts. **NEVER** direct discharge toward people – rocks and debris can be thrown hundreds of feet.

### Operation (continued)

- **NEVER** operate near embankments or terrain that is so steep that rollover could occur.
- Always stay in the operator position when using the attachment.
- Before leaving the operators position, disengage hydraulic drive, lower the attachment to rest flat on the ground, stop engine, set park brake, and wait for all motion to stop.
- **NEVER** place hands in the discharge area or clear debris while engine is running.

### Avoid High Pressure Fluids Hazard



- Escaping fluid under pressure can penetrate the skin causing serious injury.
- Avoid the hazard by relieving the pressure before disconnecting hydraulic lines.
- Use a piece of paper or cardboard, NOT BODY PARTS, to check for suspected leaks. Wear protective gloves and safety glasses or goggles when servicing or performing maintenance on hydraulic systems.
- If an accident occurs, see a doctor immediately. Any fluid injected into the skin must be surgically removed within a few hours or gangrene may result.

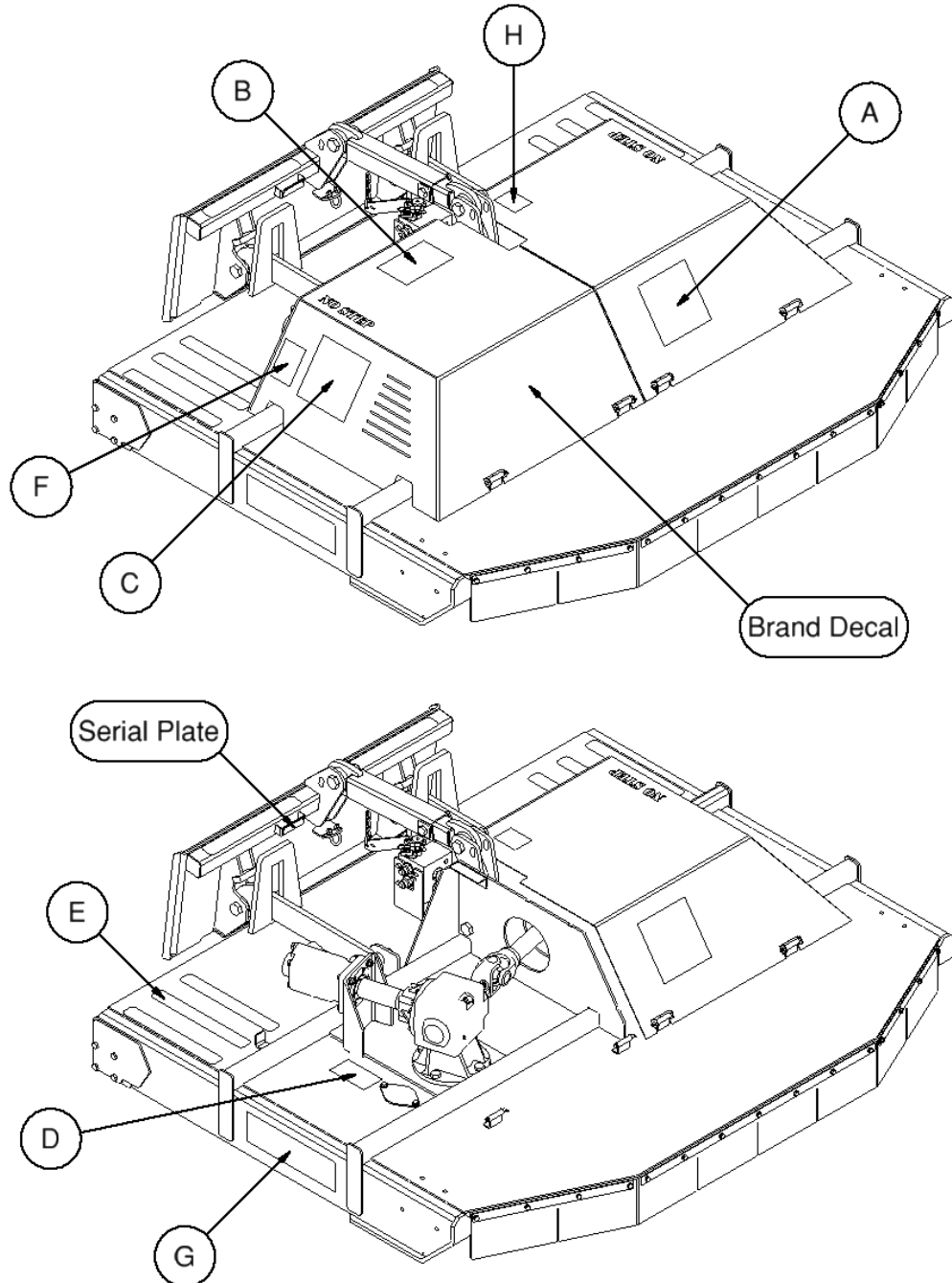
### Maintenance

- **NEVER** make adjustments, lubricate, clean, or perform any service on the machine while it is in operation.
- Make sure the attachment is serviced on a daily basis. Improper maintenance can cause serious injury or death in addition to damage to the attachment and/or your equipment.

# SERIAL NUMBER AND SAFETY DECAL LOCATIONS

## Serial Number Location:

It is important to refer to the serial number of your attachment when making repairs or ordering parts. Early or later models (identification made by serial number) may use different parts, or it may be necessary to use different procedures in doing a specific operation. Serial number plate is located on the right side of the mounting plate.



## Safety Decal Locations:

The locations of the safety decals are shown. If these decals are missing, damaged, or painted over they must be replaced. Call Quick Attach Attachments LLC (320-759-1551) for replacement decals.

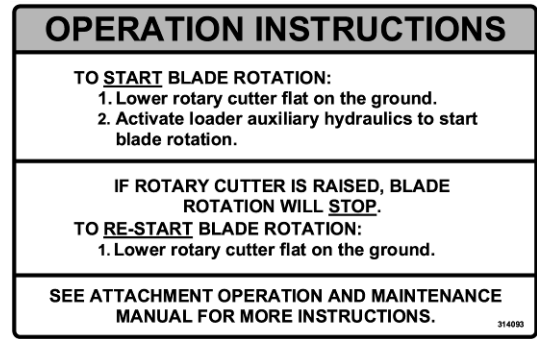
# SERIAL NUMBER AND SAFETY DECAL LOCATIONS

(A)



**Part Number: 314092**  
**Location:** Front side of LH cover  
**Quantity: 1**

(B)



**Part Number: 314093**  
**Location:** Top of cover  
**Quantity: 1**

(C)



**Part Number: 314094**  
**Location:** Both sides of cover  
**Quantity: 2**

(D)



**Part Number: 314095**  
**Location:** Next to blade bolt access cover  
**Quantity: 1**

(G)



**Part Number: 400493**  
**Location:** Left and right sides of deck  
**Quantity: 2**

(E)

**Part number: 202153 (Anti-skid tape 2 x 16)**  
**Location:** Mounting plate and top of deck  
**Quantity: 8**

(H)



**Part Number: 201415**  
**Location:** Rear top of LH cover  
**Quantity: 1**

(F)



**Part Number: 200001**  
**Location:** Side of RH cover  
**Quantity: 1**

**Large Brand Decal**  
**Location:** Front of RH cover  
**Quantity: 1**

# USERS MOUNTING INSTRUCTIONS

After the initial set-up assembly is completed use the following procedure to mount the attachment to the loader for user operation.



1. Use the step, treads, and grab handles to get on and off the loader and attachment.

2. Sitting in the operator's seat, lower seat bar and fasten the seat belt.

3. Drive the loader to the rear of the brush mower. Put the loader quick attach coupler into the attachment mounting bracket.



4. Tilt the loader coupler backward a small amount until it is fully engaged in the attachment mounting bracket.

5. Stop the engine and engage the parking brake.



6. Secure the coupler locking mechanism that attaches the attachment to the loader.

**⚠ WARNING** Coupler wedges or pins must extend through the holes in attachment. Levers must be fully down and locked. Failure to secure wedges or pins can allow attachment to come off and cause injury or death.

# USERS MOUNTING INSTRUCTIONS

7. Connect the hydraulic quick couplers from the attachment to the loader.

**IMPORTANT:** Make sure the quick couplers are fully engaged. If the quick couplers do not fully engage, check to see that the couplers are the same size and brand. Do not force the quick couplers together.

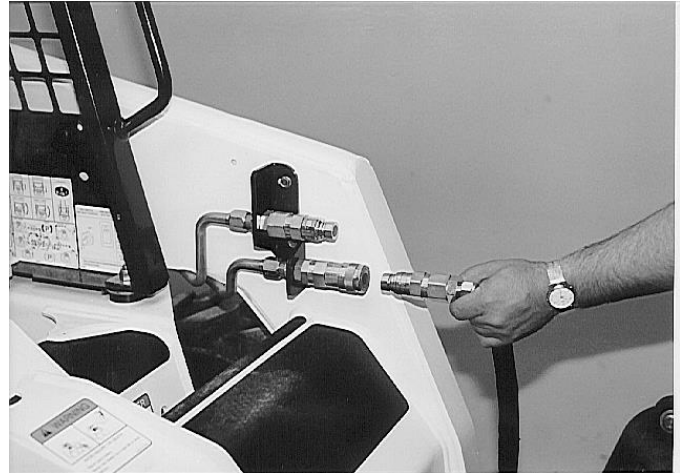
**IMPORTANT:** Wipe the ends of the hydraulic quick couplers (both lead and loader) with a rag to remove any possible contamination. Contamination can cause hydraulic components to fail and is not covered under warranty.

**NOTE:** Attachment is shipped with 12FJX (1-1/16" Female JIC Swivel) fittings on the ends of the lead hoses.

8. Make sure the hoses are properly routed to fit your specific loader. If the hoses are not routed correctly, hoses may get pinched or rub on tires. Be sure to check the hose routing through the full range of intended motion of the attachment before operating it.

More than one routing may be acceptable depending on the loader. Pick the routing that best suits your loader.

**IMPORTANT:** Proper hose routing is the responsibility of the owner and/or operator. Pinched or stretched hoses are not covered under warranty.



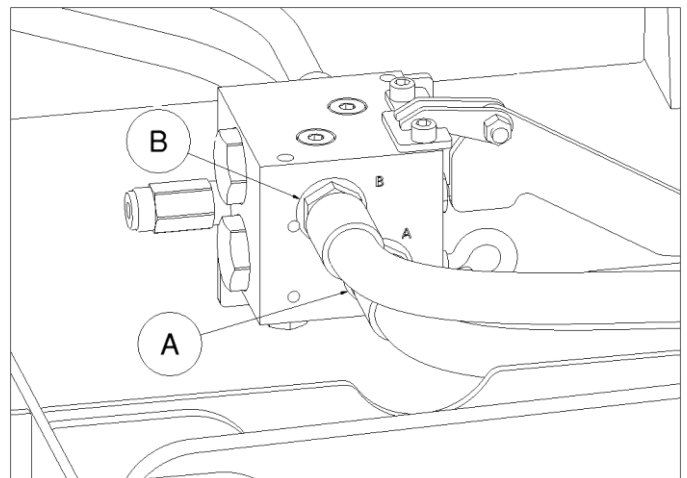
## Proper Lead Hose Attachment

The attachment lead hoses need to be attached as follows from the valve block:

- [A] Pressure Hose
- [B] Return Hose

If the hoses are attached any other way, the attachment will not work properly.

Mounting is now complete and you are ready to use the attachment. Use reverse order of above instructions to dismount the attachment from the loader.





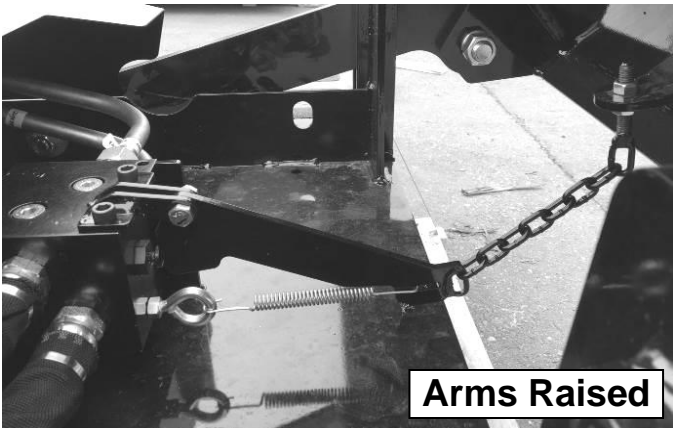
# OPERATING INSTRUCTIONS

**⚠ WARNING** Never operate without blade shut-off device. Never modify the blade shut-off. To reduce the risk of injury or death check that is operating properly when you first use a machine, after service, or anytime someone may have disconnected the Blade Shut-Off device.



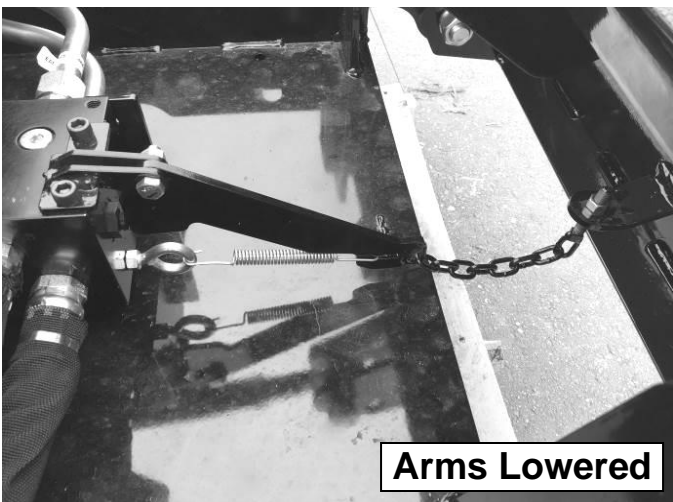
## Checking Blade Shut-Off Device

1. With the operator in the seat of the loader, the seat belt fastened and the seat bar lowered, start the engine.
2. Position the attachment flat on the ground with the loader arms fully down.
3. Engage the auxiliary hydraulics. The blades should start rotating.
4. Raise the lift arms, the blades should stop rotating before the mower is lifted off the ground.
5. Lower the lift arms and the blades should re-engage.



## Checking Mechanical Linkage for the Blade Shut-Off Device

1. Stop the engine
2. Remove the main shield.
3. Check the condition of the spring and chain.
4. Check for loose or missing nuts and bolts on the valve mounting or shut-off device.
5. Check hydraulic hoses for loose connections.
6. Repair or replace parts as needed. Contact Quick Attach Attachments LLC for more information if you cannot repair your Blade Shut-Off device.



# OPERATING INSTRUCTIONS

---

The type of brush being cut and the ground conditions will determine the best ground speed and cutting procedure. The attachment is designed to cut short or tall grass, brush, and small saplings.

**IMPORTANT:** Before operating the attachment, perform the service schedule for routine maintenance.

1. Inspect the cutting area for obstructions such as stumps, wire, rocks, electrical lines, debris, drop offs, holes, etc. Remove obstructions from the cutting area that might be picked up and thrown.
2. With the operator in the seat of the loader, the seat belt fastened and the seat bar lowered, start the engine.

**⚠ WARNING** To improve stability, always carry attachment low to the ground while driving.

**IMPORTANT:** Do not operate attachment when excessive vibration is present or serious damage can occur. Check blades and gearbox.



# OPERATING INSTRUCTIONS

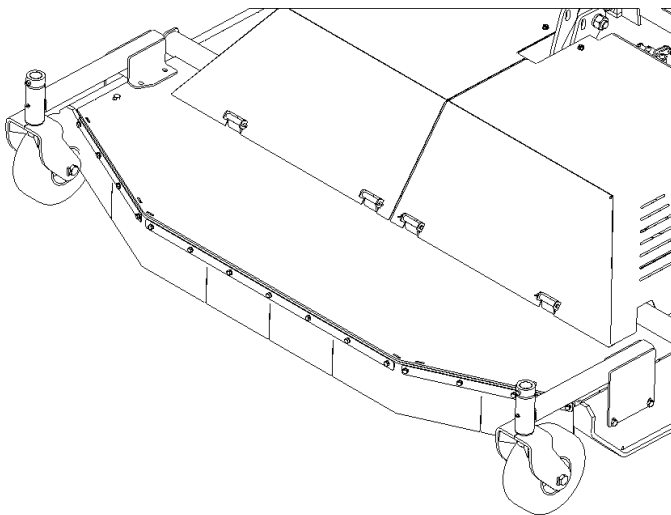


3. With the engine at low RPM, lower the loader lift arms fully and position the attachment flat on the ground.
4. Engage the auxiliary hydraulics, increase the engine speed to full RPM, and drive the loader forward into the work area.

**NOTE:** Raising the front of the attachment may help while driving forward into thick brush and when turning. Tilt attachment down to start cutting.

**NOTE:** The mower can be operated with the loader arms in float mode, if so desired.

**NOTE:** When the lift arms of the loader are raised too high, the blade shut-off device will stop the blades from rotating. Lower the lift arms fully to restart blade rotation.



## Wheel Kit

The wheel kit can be bolted to the front of the mower to reduce scalping when turning on grass. It is not recommended to have the wheels installed when mowing in heavily wooded areas as they can become damaged from hitting large trees.

# ROUTINE MAINTENANCE

**⚠ WARNING** Lower the attachment to rest on the skid shoes and rear roller, shut down the engine, relieve the hydraulic pressure to the attachment, wait for all motion to stop, and set park brake before leaving the operator's seat to perform service of any kind.

It is the operator's responsibility to make daily inspections of the attachment and loader for damage, loose bolts, fluid leaks, or anything else that could cause a potential service or safety problem. Preventive maintenance is the easiest and least expensive type of maintenance.

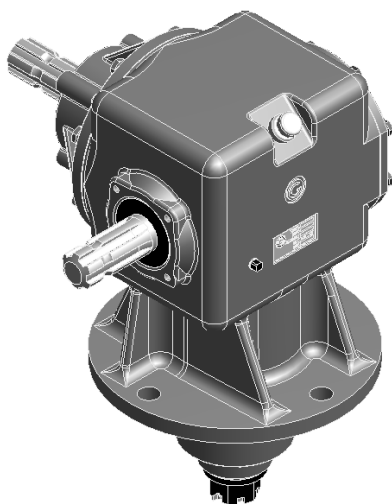
**IMPORTANT:** Bolts and set screws can loosen after initial usage. After first hour of operation check all bolts and set screws. This must also be done daily before operation. If nuts or bolts are missing or damaged, replace immediately.

## DAILY INSPECTION

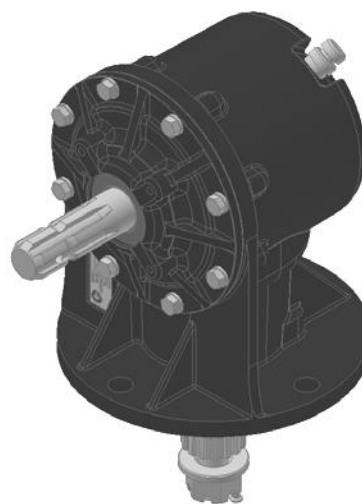
Check the following items at least **ONCE A DAY** before operating the mower:

1. Check blade shut-off device for proper function.
2. Check blades for cracks or damage. Replace if necessary.
3. Check blade mounting hardware for proper torque 1000ft. lbs. (1355Nm). Tap bolt head with hammer and retorque. Check mounting plate hardware.
4. Check deck, shields, and rear roller. Repair if damaged or replace if necessary.
5. Check for damaged or missing decals and anti-skid tape. Replace if necessary.
6. Check for damaged or leaking hydraulic hoses or fittings. Replace if necessary.
7. Clean debris, leaves, grass, and flammable material from deck area and under covers.
8. Lubricate all pivot points.
9. Check lubrication level in gearbox (EP80W-90 or EP85W-140 gear lube). Approximately 43oz for the divider gearbox and approximately 32oz for the standard gearbox.

Change the gearbox oil after the first **50 hours** of operation. Change the oil **annually** or every **500 hours** of operation thereafter, whichever comes first.



**Divider gearbox: 43 oz. oil**



**Standard gearbox: 32 oz. oil**

# ROUTINE MAINTENANCE

## LUBRICATION

### Lubrication Legend



Multipurpose spray lube



Multipurpose grease lube



Multipurpose oil lube



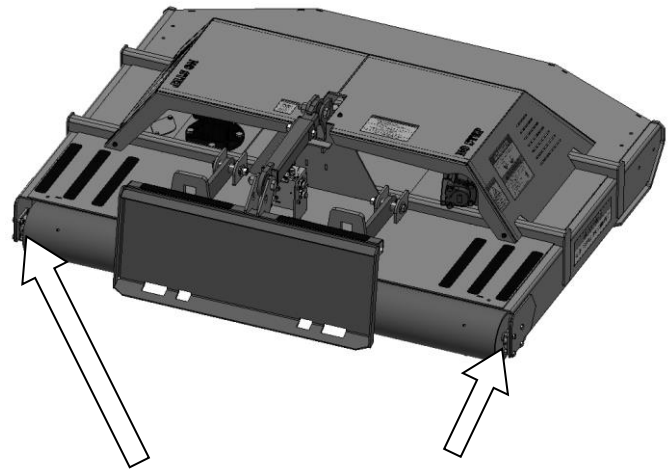
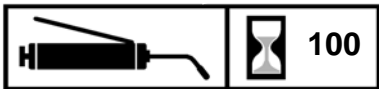
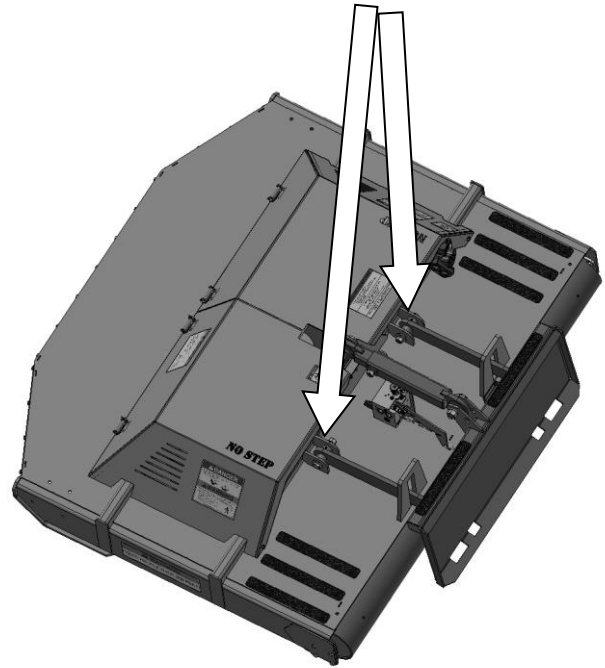
Intervals at which lubrication is required

Use No. 2 lithium base gun grease when lubricating all attachment grease fittings.

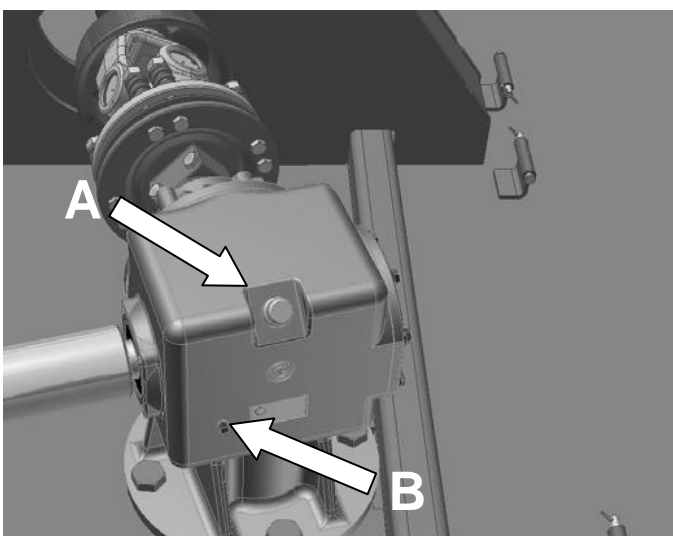
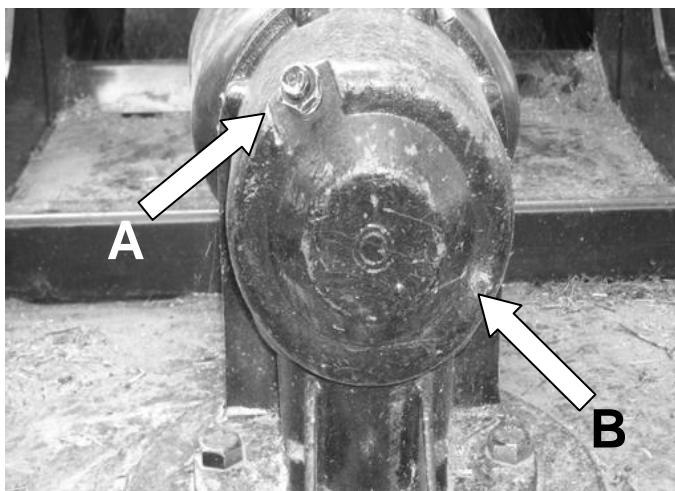
Grease the arm bushings after every 8 hours of operation.

Grease the roller bearings with no more than 2 pumps of grease every 40 hours.

Grease both ends of driveline every 100 hours or once a season, whichever comes first.



# ROUTINE MAINTENANCE



## Gearbox Fluid Check and Fill

1. Open the gearbox covers.
2. Remove the level check plug **[B]** to check the fluid level in the gearbox. Fluid must be level with the check plug hole.
3. To add EP80W-90 or EP85W-140 gear lube, remove the fill plug **[A]** and add lube until it is level with the check plug hole. The standard gearbox (left side of mower) oil capacity is approximately 32 ounces. The divider gearbox (right side of mower) oil capacity is approximately 43 ounces.
4. Reinstall the level check plug, the fill plug, and the gearbox covers. Clean up any oil that may have spilled.

**IMPORTANT:** Fluids such as engine oil, gear lube, and hydraulic fluid must be disposed of in an environmentally safe manner. Some regulations require that certain spills and leaks be cleaned in a specific manner. Check local, state, and federal regulations for the correct disposal.

## Inspecting the Motor Coupler

1. Open the gearbox/driveline covers.
2. Check the condition and tightness of the nut, bolt, and set screw. Replace as needed.

**⚠ WARNING** Moving parts may cause injury or death. Always replace guard after servicing. Do not operate without cover in place.

# ROUTINE MAINTENANCE

## Cleaning the Brush Mower

**⚠ WARNING** To avoid injury or death, before exiting under or servicing under the attachment, be sure to disconnect the auxiliary hydraulic hoses. Raise the lift arms and tilt the attachment down fully. Install an approved lift arm support and stop the engine.

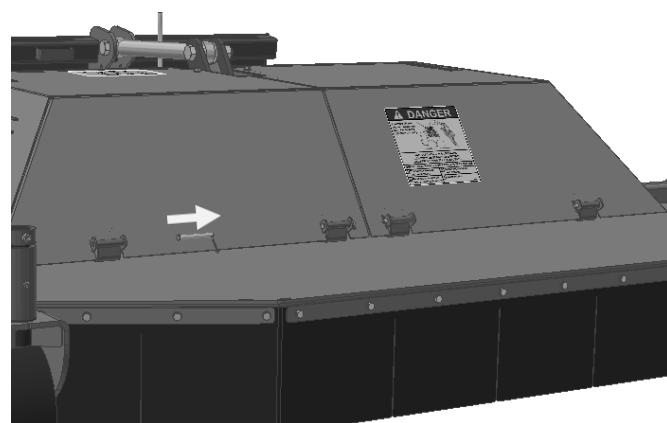
1. Position the attachment flat on the ground.
2. Remove the bolts from the back and top of the covers and swing them forward.

**NOTE:** Alternatively, the covers can be removed completely by removing the bolts and the hinge pins.

3. Position the attachment by raising the lift arms and tilting the attachment down, as shown. Use an arm lock when working with arms raised. This may require the help of an assistant. Refer to loader's operator's manual for arm locking instructions. Keep the front edge of the attachment within one foot of the ground for debris clean out or blade service.
4. Exit the loader.
5. Use water or a small brush to clean debris from the areas under the cover and around the gearbox.

**⚠ WARNING** Always wear eye protection that meets z87.1 when cleaning.

**⚠ WARNING** Use care when removing any debris that is wrapped around the blades, stump jumper, or gearbox shaft. Blades can rotate suddenly.



# ROUTINE MAINTENANCE

## Blade Removal and Installation

**NOTE:** Refer to “Daily Inspection” on page 12 of this manual for daily maintenance check. Check that the blades can swing freely. Also check blades, mounting hardware, and stump jumper for wear, cracking, or breakage, which can cause excessive vibrations. Replace if damaged.

Only service the blades when attachment is attached to the loader.

**⚠ WARNING** To avoid injury or death, before exiting under or servicing under the attachment, be sure to disconnect the auxiliary hydraulic hoses. Raise the lift arms and tilt the attachment down fully. Install an approved lift arm support and stop the engine.

**⚠ WARNING** Bent, deformed, cracked, or damaged blades should be removed from the unit and discarded immediately. Never attempt to repair or reuse a damaged blade.

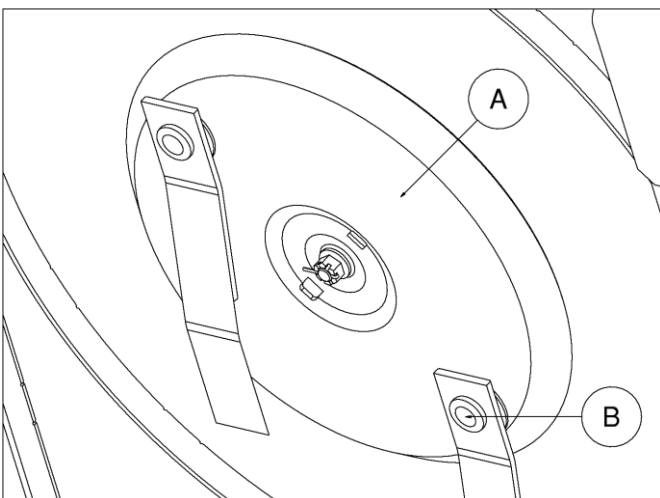
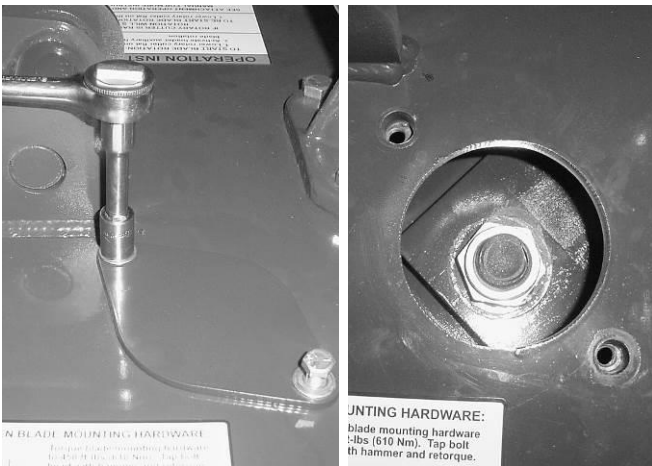
**⚠ WARNING** Always replace worn blades. Do not sharpen or weld on the blades. Excessively worn blades can break and be thrown hundreds of feet.

**⚠ WARNING** Wear safety glasses and gloves when removing and installing blades.

### Removal:

1. Remove the two (2) bolts securing the Blade Nut Access Cover and remove the cover.
2. Rotate the stump jumper [A] until the bolt [B] is accessible from the front of the mower and use a hammer and punch to remove the roll pin.
3. Rotate the stump jumper [A] until the bolt [B] is aligned with the access hole.
4. Remove the slotted nut from the blade bolt.

**NOTE:** Blade bolt and blade may fall from the stump jumper when removing the blade nut. Always support the blade bolt and blade while removing the slotted nut.





# ROUTINE MAINTENANCE

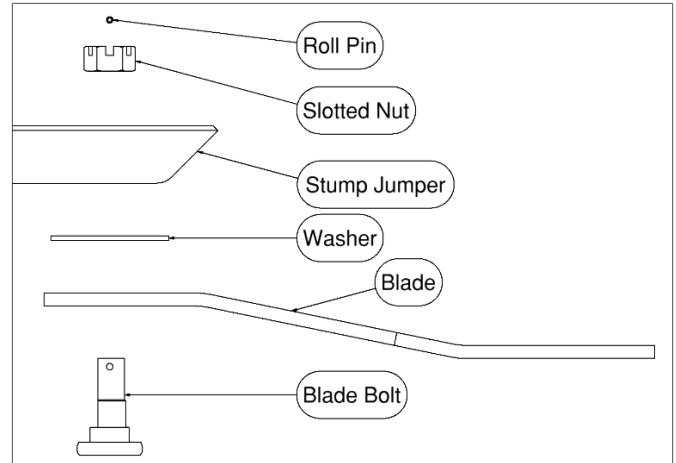
## Installation:

1. Always use a **new** slotted nut, bolt, and roll pin during assembly.

**NOTE:** The blade bolt fits only one way into the stump jumper. Install the washer between the blade and the stump jumper.

**NOTE:** To assist with slot alignment, mark the cross-hole position on the end of the bolt before installation.

2. Tighten the slotted nut to 1000 ft. lbs. (1355 Nm) torque. Continue to tighten the nut until the slots align with the bolt cross-hole.
3. Install the roll pin through the bolt and nut.
4. Repeat the procedure for the other blades.

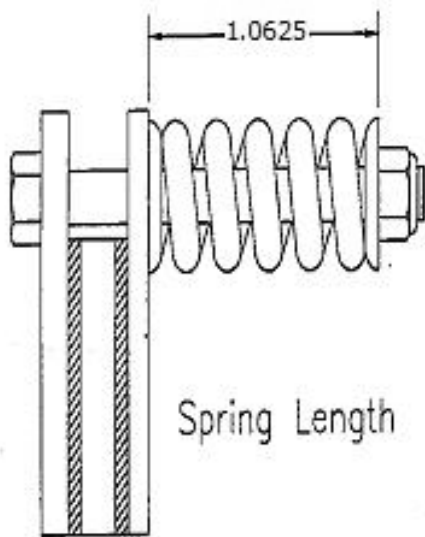


# ROUTINE MAINTENANCE

## Slip Clutch Adjustment

The slip clutch is factory preset to the correct torque for protecting the attachment and loader. For adjustments, use the following steps.

1. Loosen all eight clutch bolts to remove all tension from the springs.
2. Hold the clutch hub solid and turn the shaft to make sure the clutch slips.
3. If the clutch does not slip, disassemble the clutch and clean it with a clutch cleaning solution.
4. Reassemble the clutch once cleaned.
5. Tighten each of the eight bolts until the springs are all evenly compressed to  $1\text{-}1/16''$  as shown.



**IMPORTANT:** If the clutch continues to slip excessively when springs are compressed to  $1\text{-}1/16''$ , check the friction discs for excessive wear. Friction discs are  $1/8''$  thick when new. Replace discs after there is  $1/16''$  wear.

**IMPORTANT:** Do not overtighten clutch bolts. Overtightening can lead to severe damage or failure of the attachment.

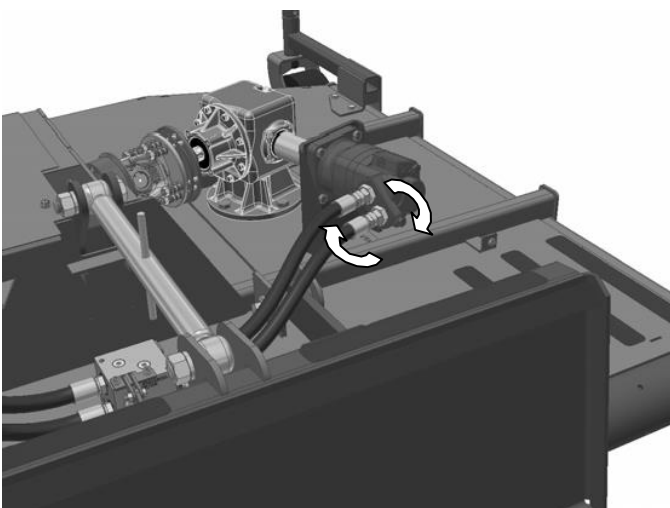
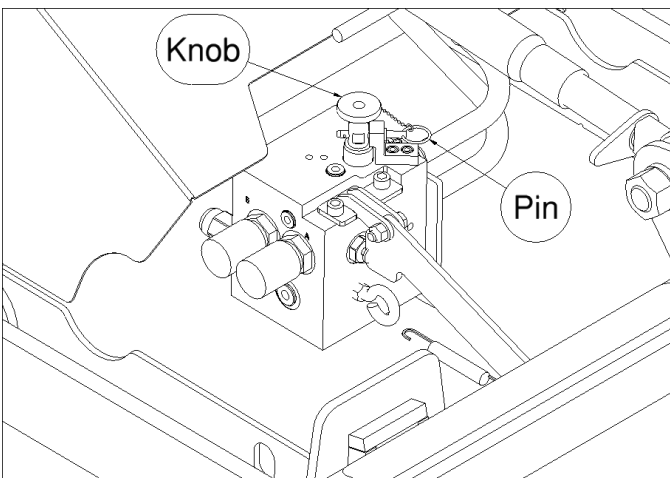
## Reversing Blade Rotation

If mower is equipped with the bi-directional valve block, the direction of the blades can be reversed by removing the pin, pulling or pushing the knob up or down, and replacing the pin to hold it in position. This will allow you to use the backside of the double-sided blades, increasing the life of the blades.

When both edges of the blade are excessively worn, replace both blades.

**⚠ WARNING** Always replace worn blades. Do not sharpen or weld on the blades. Excessively worn blades can break and be thrown hundreds of feet.

**IMPORTANT:** Always replace both blades with two that are equal in weight to prevent vibration. Always use genuine Quick Attach™ replacement blades.



# BOLT TORQUE INFORMATION

## Torque-Tension Relationships for SAE J429 Grade Bolts

Nominal Thread Size	SAE J429 Grade 2			SAE J429 Grade 5			SAE J429 Grade 8		
	Clamp Load (lbs)	Tightening Torque		Clamp Load (lbs)	Tightening Torque		Clamp Load (lbs)	Tightening Torque	
		K = .15	K = .20		K = .15	K = .20		K = .15	K = .20
<b>Unified Coarse Thread Series</b>									
1/4-20	1,300	49 in-lbs	65 in-lbs	2,000	75 in-lbs	100 in-lbs	2,850	107 in-lbs	143 in-lbs
5/16-18	2,150	101	134	3,350	157	210	4700	220	305
3/8-16	3,200	15 ft-lbs	20 ft-lbs	4,950	23 ft-lbs	31 ft-lbs	6,950	32.5 ft-lbs	44 ft-lbs
7/16-14	4,400	24	30	6,800	37	50	9,600	53	70
1/2-13	5,850	36.5	49	9,050	57	75	12,800	80	107
9/16-12	7,500	53	70	11,600	82	109	16,400	115	154
5/8-11	9,300	73	97	14,500	113	151	20,300	159	211
3/4-10	13,800	129	173	21,300	200	266	30,100	282	376
7/8-9	11,425	125	166	29,435	321	430	41,550	454	606
1-8	15,000	187.5	250	38,600	482.5	640	54,540	680	900
<b>Unified Fine Thread Series</b>									
1/4-28	1,500	55 in-lbs	75 in-lbs	2,300	85 in-lbs	115 in-lbs	3,250	120 in-lbs	163 in-lbs
5/16-24	2,400	112	150	3,700	173	230	5,200	245	325
3/8-24	3,600	17 ft-lbs	22.5 ft-lbs	5,600	26 ft-lbs	35 ft-lbs	7,900	37 ft-lbs	50 ft-lbs
7/16-20	4,900	27	36	7,550	42	55	10,700	59	78
1/2-20	6,600	41	55	10,200	64	85	14,400	90	120
9/16-18	8,400	59	79	13,000	92	122	18,300	129	172
5/8-18	10,600	83	110	16,300	128	170	23,000	180	240
3/4-16	15,400	144	193	23,800	223	298	33,600	315	420
7/8-14	12,610	138	184	32,480	355	473	45,855	500	668
1-12	16,410	205	273	42,270	528	704	59,670	745	995

Clamp load estimated as 75% of proof load for specified bolts.

Torque values for 1/4 and 5/16 inch series are in inch-pounds. All other torque values are in foot-pounds.

Torque values calculated from formula  $T = KDF$

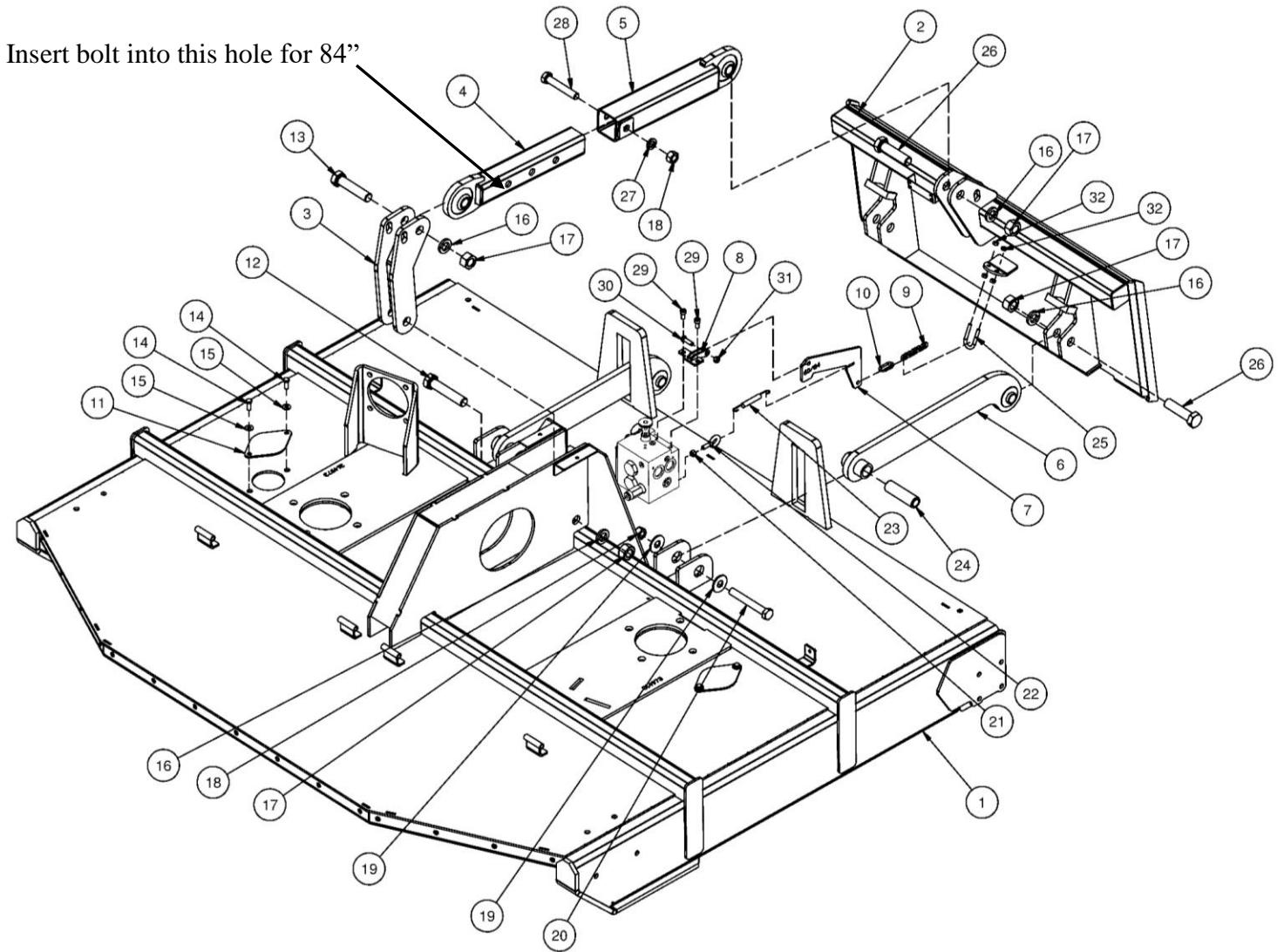
where:  $K=0.15$  for "lubricated" conditions

$K=0.20$  for "dry" conditions

## BRUSH MOWER 84 PARTS INFORMATION

ITEM	QTY	PART NO.	DESCRIPTION	STOCK NO.
1	1	350204	DECK 84 BM V3 W/A	
2	1	350200	MOUNTING PLATE BM V3 W/A	
3	1	350205	LINK SWING 84 W/A	
4	1	340030	TOP LINK OUTER W/A	
5	1	340031	TOP LINK INNER W/A	
6	2	314208	LIFT ARM 60/84 BM W/A	
7	1	350227	PLATE LEVER SHUT OFF 60/84 PAINTED	
8	1	319239	PIVOT SHUT OFF BM W/A	
9	1	350236	CHAIN MACHINE STR 1/0 X 5 LINK	
10	1	350237	CHAIN QUICK LINK 3/16	
11	2	314113	COVER BLADE HOLE PAINTED	
12	1	13473	BOLT HEX	1 X 5 NC GR 5
13	1	13471	BOLT HEX	1 X 4-1/2 NC GR 5
14	4	13105	BOLT HEX	3/8 X 1 NC GR 5
15	4	33006	WASHER FLAT USS	5/16"
16	5	33636	WASHER LOCK	1"
17	5	36320	NUT HEX FULL	1 NC GR5 Z
18	2	36316	NUT HEX FULL	3/4 NC GR5 Z
19	2	33018	WASHER FLAT USS	3/4"
20	1	13374	BOLT HEX	3/4 X 5-1/2 NC GR 5
21	1	36306	NUT HEX FULL	3/8 NC GR5 Z
22	1	42234	BOLT EYE	3/8 X 1
23	1	314089	SPRING SHUTOFF	
24	2	314299	BUSH 1.25 X .813 X 4.313	
25	1	42006	U-BOLT	5/16 X 1 NC GR5
26	6	13469	BOLT HEX	1 X 4 NC GR 5
27	1	33632	WASHER LOCK	3/4"
28	1	13371	BOLT HEX	3/4 X 4-1/2 NC GR 5
29	2	23303	BOLT SHCS	3/8 X 3/4 NC BO
30	1	13107	BOLT HEX	3/8 X 1-1/4 NC GR 5
31	1	37212	NUT REV LOCK	3/8 NC GR A Z
32	4	36304	NUT HEX FULL	5/16 NC GR5 Z

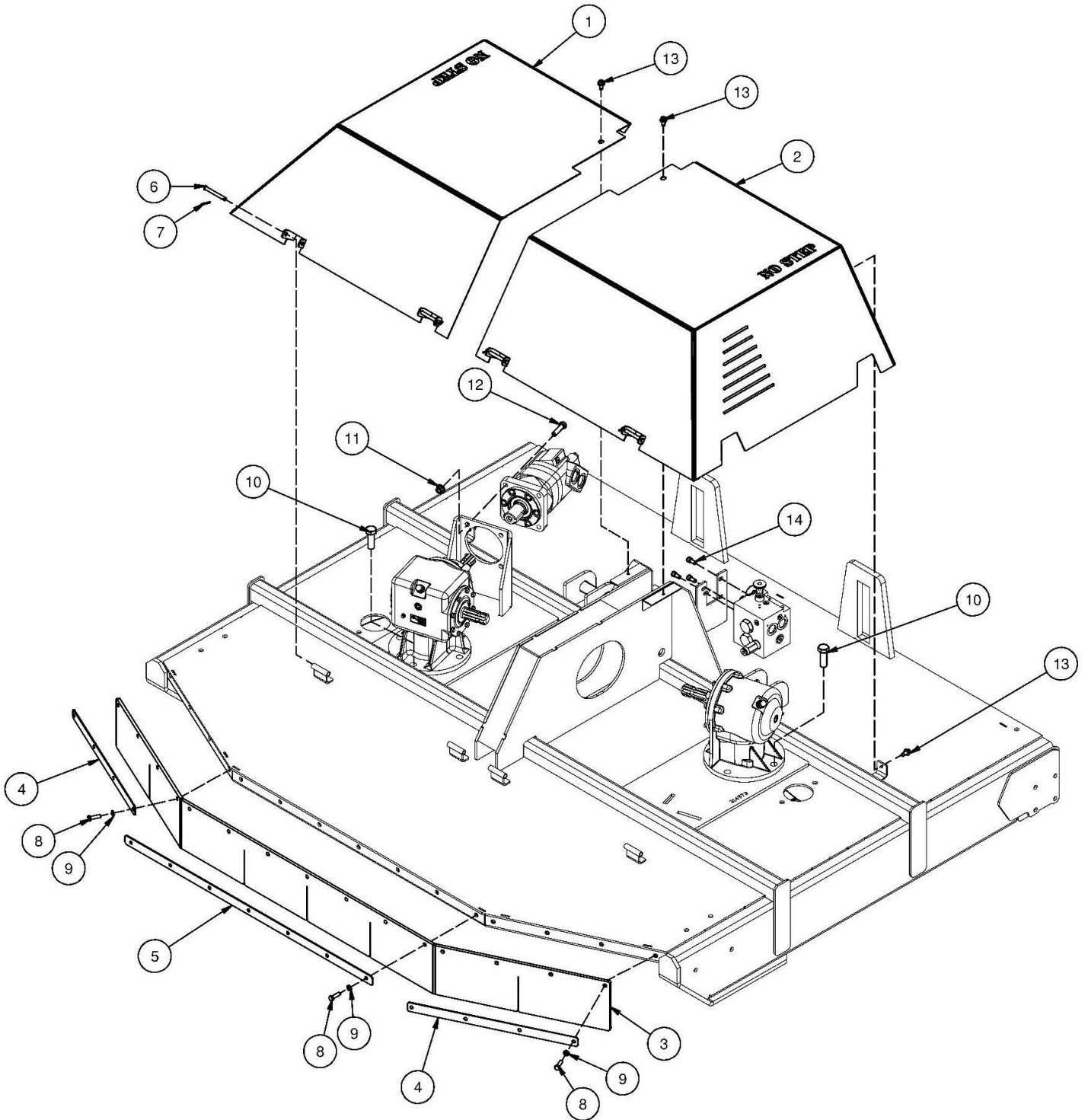
# BRUSH MOWER 84 PARTS INFORMATION



## BRUSH MOWER 84 PARTS INFORMATION

ITEM	QTY	PART NO.	DESCRIPTION	STOCK NO.
1	1	314906	COVER GEARBOX 84 RH W/A	
2	1	314907	COVER GEARBOX 84 LH W/A	
3	1	314955	SHIELD RUBBER FRONT 84	
4	2	314274	PLATE RUBBER SHIELD PAINTED	
5	1	314948	PLATE RUBBER CENTER 84 PAINTED	
6	4	300790	PIN CLEVIS .38 X 3.25	
7	4	65076	PIN COTTER 1/8 X 1	
8	15	13107	BOLT HEX	3/8 X 1-1/4 NC GR 5
9	15	103880	WASHER LOCK	3/8"
10	8	15362	BOLT HEX	3/4 X 2-1/4 NC GR 8 YZ
11	4	0167011	NUT TOP LOCK FLNG	1/2 NC GR G (GR8)
12	4	15211	BOLT HEX	1/2 X 2 NC GR 8 YZ
13	4	32467	BOLT THDCUT FLG	3/8 X 3/4 NC
14	3	23303	BOLT SHCS	3/8 X 3/4 NC BO

# BRUSH MOWER 84 PARTS INFORMATION

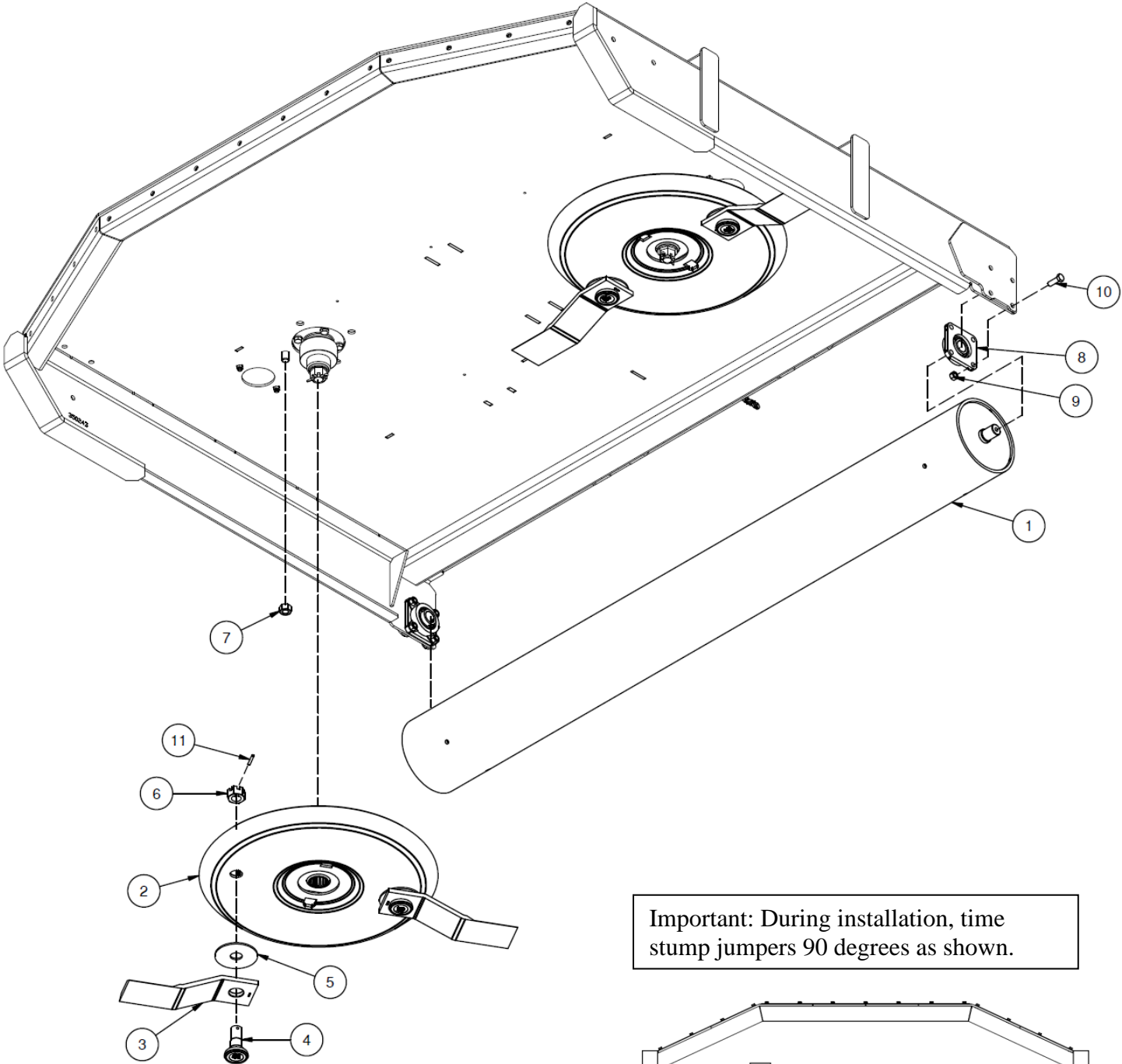


## BRUSH MOWER 84 PARTS INFORMATION

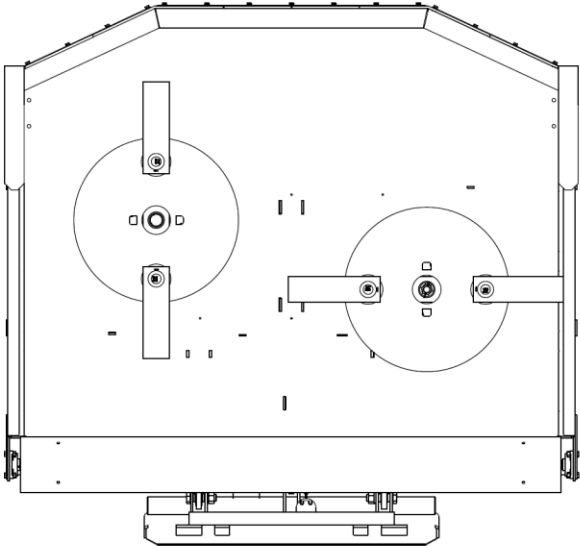
ITEM	QTY	PART NO.	DESCRIPTION	STOCK NO.
1	1	350202	ROLLER 84 BM W/A	
2	2	314059	STUMP JUMPER 15T X 25.25 W/A	<b>S/N 1127689 -</b>
	2	350525	STUMP JUMPER 15T X 25.25 HEX W/A	<b>S/N 1127690 +</b>
3	4	314964	BLADE MOWER 12.25	
4	4	331372	BOLT BLADE D W/HOLE	<b>S/N 1127689 -</b>
	4	421489	BOLT BLADE HEX 1-1/8 X NF X 3.20	<b>S/N 1127690 +</b>
5	4	314061	WASHER PLATE 1.25 X 4.50 X .25	<b>S/N 1127689 -</b>
	4	350504	WASHER 1.137 HEX ID X 4.50 OD	<b>S/N 1127690 +</b>
6	4	331371	NUT HEX SLOTTED 1-1/8 NF GR8	
7	8	38067	NUT TOP LOCK	3/4 NC GRD 9 YZ
8	2	340041	BRG 1-1/4 SM 4-B FLG (B-TYPE) SS	
9	8	37214	NUT REV LOCK	1/2 NC GR A Z
10	8	13209	BOLT HEX	1/2 X 1-1/2 NC GR 5
11	4	331373	ROLL PIN 1/4 X 1-5/8 Z	
99		314980	KIT PARTS BLADE BM 84	<b>PARTS ONLY S/N 1127689 -</b>
		350532	KIT APRTS BLADE BM 84 HEX	<b>PARTS ONLY S/N 1127690 +</b>



# BRUSH MOWER 84 PARTS INFORMATION



Important: During installation, time stump jumpers 90 degrees as shown.



## BRUSH MOWER 84 PARTS INFORMATION

ITEM	QTY	PART NO.	DESCRIPTION	STOCK NO.
1	1	314921	GEARBOX RC-65 TRO 1:1.93 PNT	
2	1	314909	GEARBOX RC-61 1:1 PAINTED	
3	1	314982	DRIVELN CAT6 6T X 6T X 33.3 7CLUTCH	
4	1	314981	MOTOR 11.9 6K 1.5 KEYED	
5	1	340007	VALVE ASSM 2-WAY V2 (REPLACES 314213)	
6	1	314144	COUPLER MOWER 1.5 X 1.38"-6T	
7	2	201527	ADPT STR 16MB-12MJ	
8	2	314910	HOSE 3/4 X 74 12MB-12FJX	MOTOR TO VALVE
9	2	314989	HOSE 3/4 X 24 12FJX-12FJX	LEAD HOSES
10	1	330918	ADPT STR 4MB-6MJ	CASE DRAIN/MOTOR
11	1	350249	HOSE 3/8 X 108 6FJX-8FJX	CASE DRAIN

### DRIVELINE ASSEMBLY

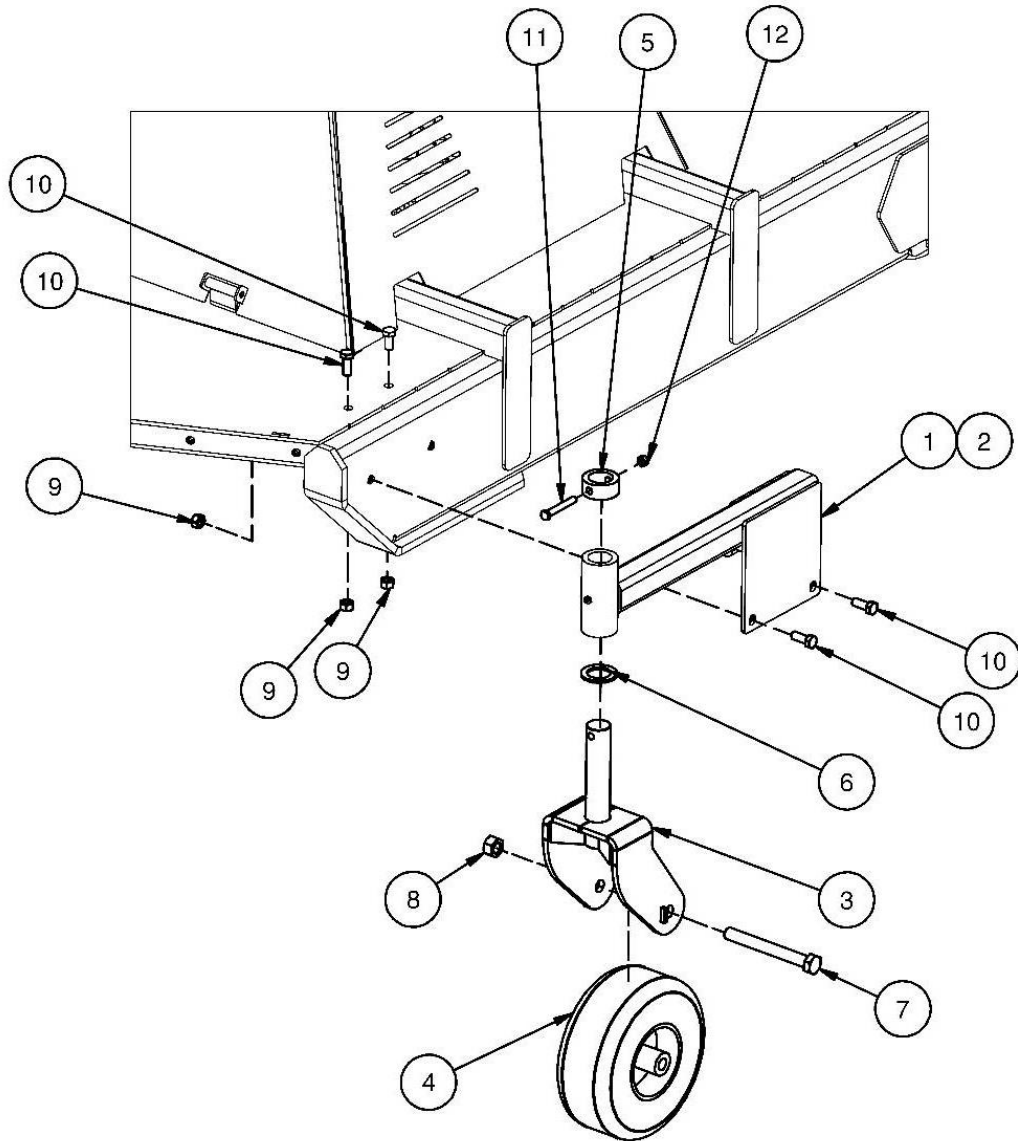
ITEM	QTY	PART NO.	DESCRIPTION	STOCK NO.
	1	300533	CLUTCH ASSEMBLY	
2	2	300532	CROSS BEARING	
4	4	300531	CLUTCH PLATE	



## BRUSH MOWER 84 PARTS INFORMATION

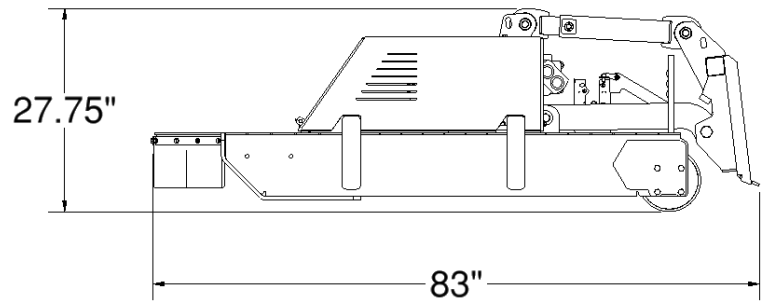
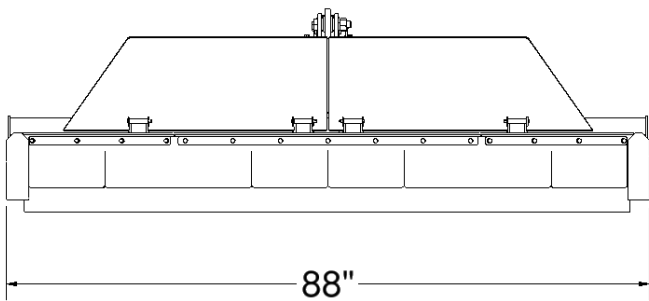
ITEM	QTY	PART NO.	DESCRIPTION	STOCK NO.
		<b>350206</b>	<b>PKG OPT WHEEL KIT BRUSH MOWER V3</b>	
1	1	314903	ARM WHEEL CASTER LH W/A	
2	1	314904	ARM WHEEL CASTER RH W/A	
3	2	314908	CASTER BRUSH MOWER W/A	
4	2	350245	WHEEL ASSM 11 X 4 - 5 EF	
5	2	317101	BUSH 2.25 X 1.52 X 1 W/H Z	
6	2	201325	WASHER MB 1 1/2 10 GA NARROW	
7	2	13376	BOLT HEX	3/4 X 6-1/2 NC GR 5
8	2	36316	NUT HEX FULL	3/4 NC GR5 Z
9	8	37214	BOLT HEX	1/2 X 1-1/2 NC GR 5
10	8	13207	BOLT HEX	1/2 X 1-1/4 NC GR 5
11	2	13114	BOLT HEX	3/8 X 2-3/4 NC GR5
12	2	37212	NUT REV LOCK	3/8 NC GR A Z

# BRUSH MOWER 84 PARTS INFORMATION



# GENERAL SPECIFICATIONS

<b>Model</b>	<b>84 V3</b>
Hydraulic Pump Capacity Requirements	30-42 GPM
Cutting Width	84"
Cutter Capacity	Brush up to 3"
Operating Weight	1670 lbs.



All dimensions are in INCHES.



## **LIMITED WARRANTY**

Quick Attach Attachments, LLC warrants each new machine manufactured by us to be free from defects in material and workmanship for a period of twenty-four (24) months from date of delivery to the original purchaser.

Our obligation under this warranty is to replace free of charge, at our factory or Direct Outlet locations, any part proven defective within the stated warranty time limit.

All parts must be returned freight prepaid and adequately packaged to prevent damage in transit.

This warranty does not cover:

1. New products which have been operated in excess of rated capacities or negligence
2. Misuse, abuse, accidents or damage due to improperly routed hoses
3. Machines which have been altered, modified or repaired in any manner not authorized by our company
4. Previously owned equipment
5. Any ground engaging tools in which natural wear is involved, i.e. tooth tips, cutting teeth, etc
6. Normal maintenance
7. Fork tines
8. Hydraulic motors that have been disassembled in any manner

In no event will the Sales Representative, Direct Outlet, Quick Attach Attachments, LLC, or any other company affiliated with it or them be liable for incidental or consequential damages or injuries, including but not limited to the loss of profit, rental or substitute equipment or other commercial loss. Purchaser's sole and exclusive remedy being as provided here in above.

Quick Attach Attachments, LLC must receive immediate notification of defect and no allowance will be made for repairs without our consent or approval.

This warranty is in lieu of all other warranties, express or implied by law or otherwise, and there is no warranty of merchantability or fitness purpose.

No agent, employee, or representative of Quick Attach Attachments, LLC has any authority to bind Quick Attach Attachments, LLC to any warranty except as specifically set forth herein. Any of these limitations excluded by local law shall be deemed deleted from this warranty; all other terms apply.

This warranty may not be enlarged or modified in any manner except in writing signed by an executive officer of Quick Attach Attachments, LLC to improve its products whenever it is possible and practical to do so. Quick Attach Attachments, LLC reserves the right to make changes and or add improvements at any time without incurring any obligation to make such changes or add such improvements to products previously sold.

Quick Attach Attachments, LLC  
P.O. Box 128 Alexandria, MN 56308  
Phone (320) 759-1551 Fax (320) 759-1590



**P/N 350248-B**  
Quick Attach Attachments LLC

**Date Printed: 4/25/2023**  
Printed in U.S.A.